

Studebaker

A Car Not too Large, Not too Costly, and Splendidly Efficient

The beautiful lines and handsome finish of the Studebaker "25" always get attention the moment they are seen.

You will admire them—so will your friends.

And when you experience the smooth, silent, vibrationless power of this car, we are certain that it will set you to thinking.

The Studebaker "25" is a splendidly efficient car, and incidentally a shining opportunity for you and every other man who wants a high grade car, reasonable to purchase and easy to maintain.

For what more can a man desire than a car, a

Studebaker car, which opens to him all the joys of motoring, with the added assurance that in design, in quality and in sheer thorough-bred performance it has no superior within double its price.

The highest priced cars are by no means the most satisfactory, and thousands of contented owners will tell you that this remarkable Studebaker "25" is a well-nigh perfect type of high standards at reasonable cost.

The sturdy Studebaker "25" will satisfy you through every day of the years and years of service it will give you.

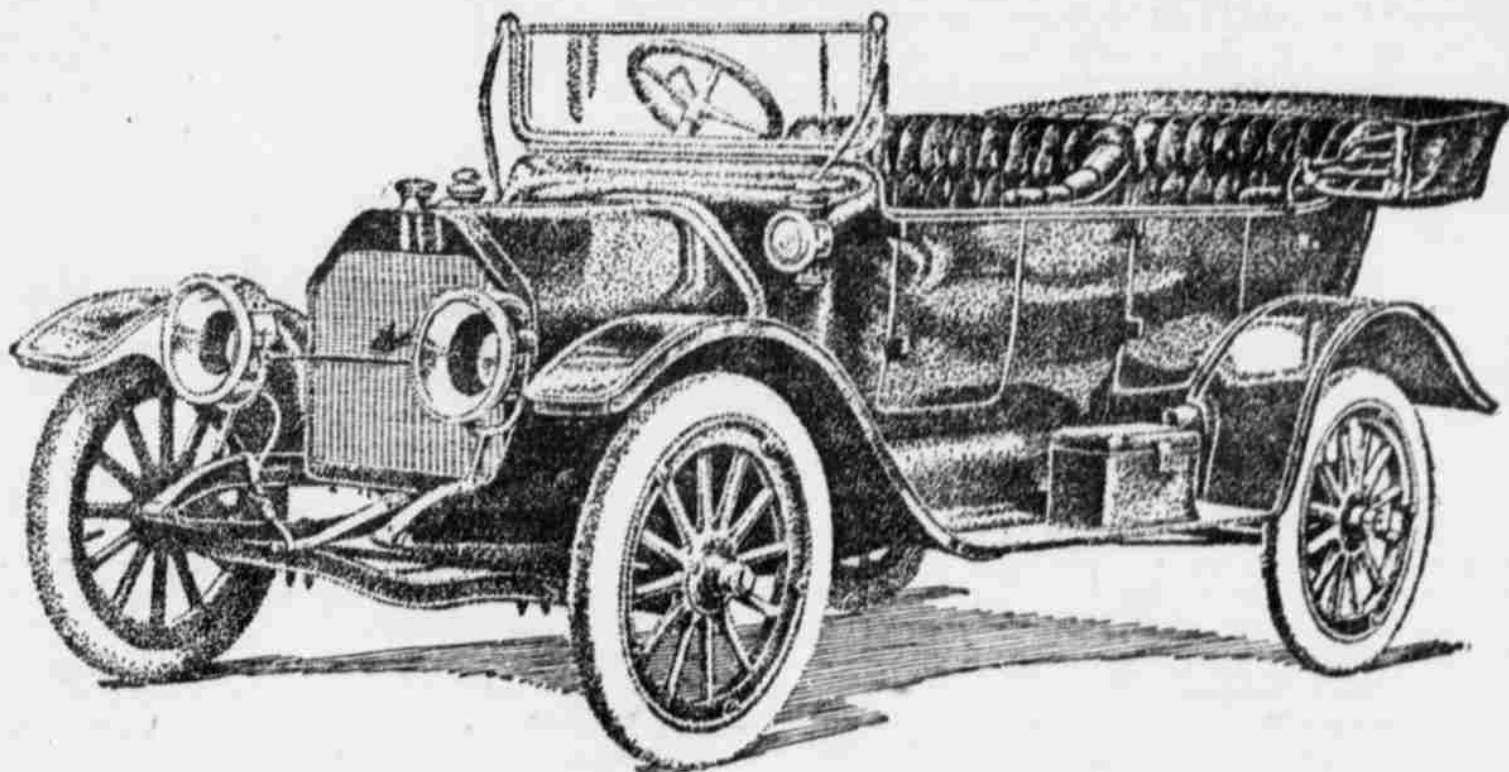
See it! Not some other day, but now!

\$885

Specifications Studebaker "25"

Long stroke, silent motor	Studebaker Jiffy curtains
Five passengers	Deep upholstery
Three speeds, forward and reverse	Speedometer
Heavy nickel trim	Electric horn
Carburetor dash adjustment	Tire holders
Demountable rims	Ventilating clear-vision windshield
Extra rim	Lamps, Tool box,
Prest-O-Lite tank	Tools, etc.

(Price, Complete, f. o. b. DETROIT)
(Add Freight to Point of Delivery)



Buy it Because It's a Studebaker

Studebaker Standards

The Studebaker "25" is as well built, with the same pains-taking attention to details, as every other Studebaker car, no matter what the price.

The design of the Studebaker "25" motor can be compared in excellence only with one or two of the most famous foreign cars.

The position of the pump and magneto on a silent cross shaft in front of the motor has forever answered the question of where they should be placed. Your examination will bear out this contention.

The sides of the bloc-cast cylinders are clean and the enclosed valves quickly accessible.

There are over 225 drop forged parts in the Studebaker "25" and every one of these light, strong forgings is heat-treated in our own huge ovens from three to six times.

Sturdy Driving Qualities

The Studebaker "25" has become widely known as a glutton for work.

It is powerful in that high degree which renders it capable of accomplishing every motoring task you set before it, with a rush which is as easy as it is successful.

It will thread in and out of traffic on high gear without laboring, and across country will take the hills without trouble or hesitation.

Not the least satisfying feature of the "25" is its quiet and full response to the throttle.

Comfort and Convenience

The long, resilient springs, cushion any road-motion and the deep upholstery adds full comfort to the admitted driving power of the car.

The Studebaker Jiffy curtains can be put in place quickly from inside the car.

The throttle and spark levers are where they belong, above the steering wheel.

In finish also, this car is quite up to Studebaker standards. The "25" is in every way a car for long use and complete satisfaction.

\$1290 Studebaker "35"

\$1550 Studebaker "SIX"

STUDEBAKER, Detroit, Mich.