

attention that I am going to communicate this secret method to you that you may test it on any person not present here tonight. If I want to find out whether a man is a democrat or an aristocrat, I take him off to one side and I gradually get him around to a point where I can discuss the Bible with him, and then I lead him to that story of Lazarus and Dives, how Lazarus ate the crumbs that fell from Dives' table, and when I have told him that story I listen to see what he says, and by what he says I can tell whether at heart he is a democrat or an aristocrat. If he is a democrat he says, 'How bad it is that we have anybody like Lazarus, who has to live on crumbs,' and then he organizes a movement to increase the number of tables so everybody will have a table of his own and no one will have to live on the crumbs that fall from the tables of others. That is what he does if he is at heart a democrat. But what does he say if he is at heart an aristocrat? There is just one thing he will say and he will say it every time without fail, 'What a lucky thing it was for Lazarus that there was a Dives near.' (Laughter.)

"This distinction, I repeat, is fundamental. There are just these two points of view from which people view all things that affect human progress. The democrat believes that society is built from the bottom; the aristocrat believes that society is suspended from the top. And because they differ in their point of view they differ just as much when they come to consider questions before the public. The man who believes that society is built from the bottom will tell you that you must legislate for all the people, and he has confidence that the prosperity of the people will find its way up through every class that rests upon the masses. But the aristocrat will tell you, and just as honestly, that you ought to legislate for the well-to-do and then be patient and wait while their prosperity leaks through on those below. This is the one great issue that has to be met everywhere in this world. You can go into any city or any country and the great issue is between the few who ask for special privileges and the many who ask for equal rights and opportunities. (Applause.)

"I can go further than Jefferson could go, because we have had a hundred years of history since. Jefferson declared what was true then and has been true ever since, that in every country you would find these two parties, one democratic in spirit that was trying to bring the government nearer to the people, and the other aristocratic in spirit, trying to obstruct every step toward possible government, but I can add what he could not have then added, except in faith, and yet he believed it for his faith in the people was sublime. But now we have the history of nations to support us when we say not only that you will find these two parties in every land, but when we say that in every country the party that is espousing the cause of the people is the growing party, and the party of the aristocracy the dying party the world around. (Applause.)

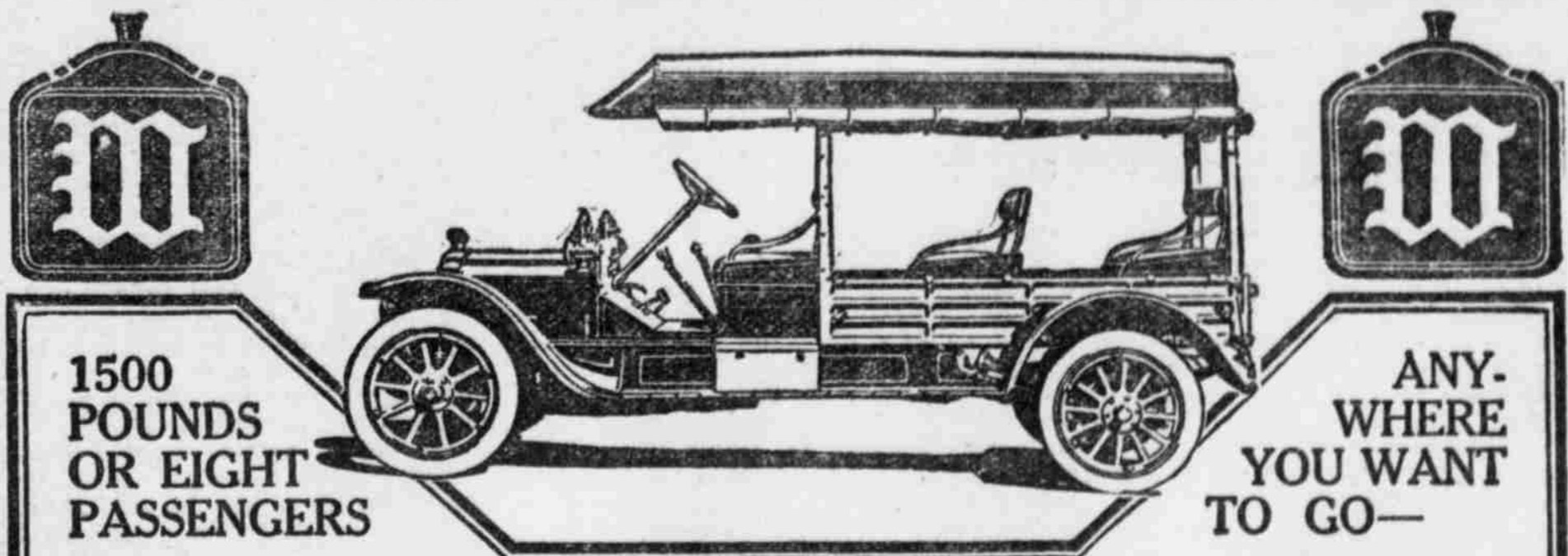
"If time permitted I might in this case bring illustrations from every land. But I guess I had better not speak of what is going on in other lands. (Laughter.) I ventured not long ago to make some reference to what was going on in one country, and I found there was some criticism, although I am prepared to furnish very authoritative precedents if I am called to account for what I said. I am able to show that I have not gone further than men in similar positions have gone in other countries as well as in this. But,

my friends, I only ask you to look back over the history of the great nations of the world, aye, of all the nations of the world, and see how much has been accomplished in the last ten years. See how many triumphs democracy has to her credit in the other nations of the world within the last decade and you will see then how many illustrations might be drawn to support the proposition that everywhere the cause of popular government is spreading.

"But surely I will be permitted to speak of the growth of popular gov-

ernment in my own country, and I am glad, I am glad that in no other part of the world has faith in the people been more abundantly manifested than in our own beloved land, and it is a very pleasant part of my subject tonight to call your attention to some of the evidences of the growth of popular government in this country, and I commence with the best evidence of it, the election of senators by direct vote of the people (applause.) It will be my official duty within a very short time to announce to the country the adoption of an amendment to the con-

stitution which will change the method of election and provide for the election of United States senators by direct vote of the people. I believe thirty-three states have already ratified it, and there is no doubt of the remaining three. We do not know just what states they will be, but the sentiment is so overwhelming that no one can doubt that within a short time this change will be made. In fact, you people of Illinois will have the proud distinction of having had the last contested senatorial election that any legislative body will ever have a chance to



# The White Combination Car

This Car Will Give You More Practical Use, More Comfort, More Pleasure, Last Longer and Cost Less to Run, Than Any Car Built

### A Roomy Carriage and Large Motor Wagon in One

There is no car built that so perfectly meets your every requirement. It carries eight people easily and conveniently, with plenty of room besides for lunch baskets or hand baggage. Its seats, (which are deep and comfortable) can be easily removed by one person in a couple of minutes, and the wagonbox body utilized for baggage, merchandise, or anything that the ordinary road or spring wagon would be used for, up to a load of 1500 pounds.

### Its Riding Comfort and Ease of Operation

Its excellent springs, light weight (considering its capacity) and its perfectly balanced body, make this car unsurpassed for comfortable riding qualities, and as easy to steer as a light roadster.

### Enough Speed and Power to Meet Every Condition

There are very few, even of the fastest touring cars, that can pass the White Combination Car on the road. And even when loaded to full capacity this White will climb hills at a steady road pace, that the ordinary car will have difficulty in climbing at all.

### The Reliable, Economical White Engine

If you have driven a White, then only can you understand, how simple, quiet, powerful and economical is the White engine. It was the first, and is still, the only practical long stroke, cast-in-one-piece engine in this country. Its fuel consumption is so low under all conditions, that regardless of price, it is the most economical engine made, and its performances in daily service

in thousands of White cars is worth investigating, in fact, the rise in the price of gasoline is not felt by White owners. Its compact simplicity with no parts exposed to dirt or injury, removes all of the chief sources of care and trouble, and necessitates little or no attention being given to it.

### Body Upholstery and All Fixtures Beautifully Finished

The finish, material and workmanship on this car, is in every detail true to the White standard,—the highest. The spring seats are roomy and comfortable, and are upholstered with the best leather, while the body finish is done with that attention to detail that has made the White cars famous for their excellence.

### The Material and Workmanship of the Highest Grade

The chassis, including engine, transmission, axles, gears, bearings and wheels, is constructed with the same care and excellent material that has characterized White products for over fifty years—and has made White automobiles of every design second to none in the world.

### Consider What This Car Means To You

Stop and think to what practical and pleasurable uses this car can be put, both in hauling and touring. You will find that it will more than take the place of a touring car, a spring wagon, a service wagon and two teams of horses combined. Just write us today or use the coupon below, and we will send you complete details of the White Combination Car.

## THE WHITE COMPANY

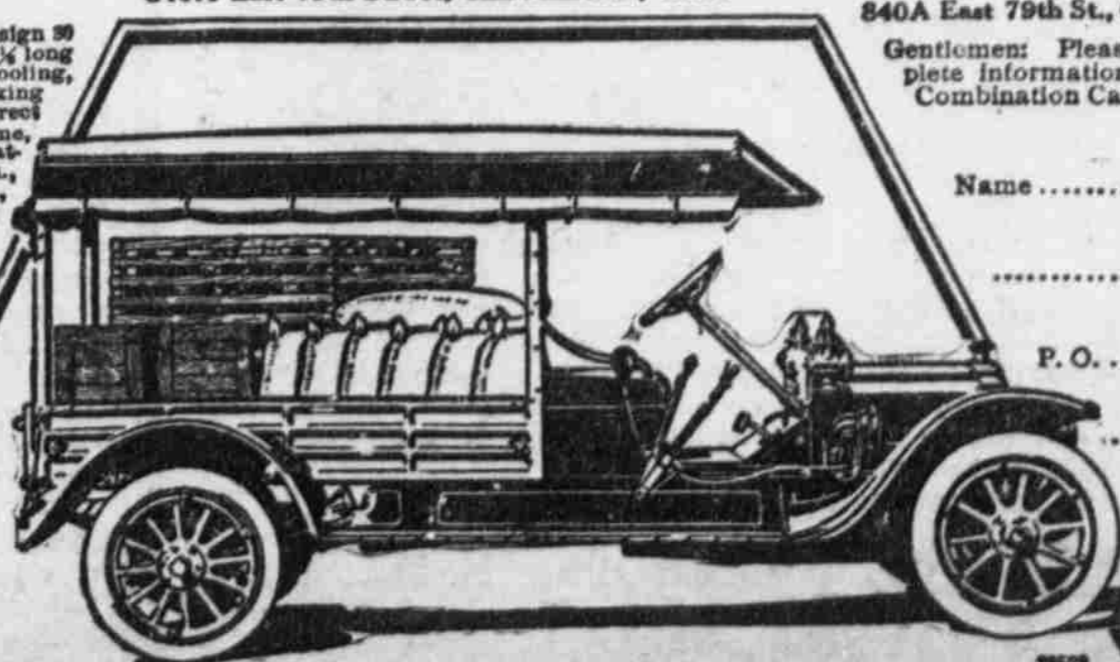
840A East 79th Street, CLEVELAND, OHIO

The White Company,  
840A East 79th St., Cleveland, O.

Gentlemen: Please send me complete information on your White Combination Car.

### SPECIFICATIONS

**POWER PLANT:** Engine, White design 50 h. p., 4 cylinders cast in bloc, 3 1/2 x 5 1/2 long stroke, enclosed valves, positive cooling, compression release for easy cranking shaft drive, four speeds forward, direct on third, one reverse. **CHASSIS:** Frame, pressed chrome-nickel steel, heat treated. Springs, front, semi-elliptic, 48 in., eight leaves; rear, semi-elliptic, 48 in., eleven leaves, vanadium steel. Tread, 56 in. Wheelbase, 100 in. Wheels, artillery type, heavy hubs and spokes. Tires, 34 in. x 4 1/2 in. front and rear, quick detachable, demountable rims. **BODY:** Special combination type; length, inside from driving seat to rear, 6 ft. 10 in., width, 43 in.; height, sides and doors, 46 inches; floor to top, 5 feet. **Standard Equipment:** Acetylene headlights, Presto-life tank or Acetylene generator. Two oil side lights, one oil tail light. Horn and bulb; extra demountable rim; tire repair outfit. Full set of tools, including jack.



Name .....

P. O. ....

State .....