

# Irrigated Semi-Tropical Lands

## The La Lomita Tract, 27,000 Acres, Mission, Texas A Money Producer Summer and Winter

These lands, now selling at from \$50 to \$100 per acre, are producing crops of Alfalfa, Sugar Cane and Cotton during the summer months, and crops of vegetables during the winter, netting more money PER CROP, than the land now, costs PER ACRE.



John J. Conway and Col. Sam Fordyce Under  
Fine Sugar Cane Raised Near Mission.

In addition to the foregoing, there are wonderful possibilities for the production of Oranges, Lemons, Grape-Fruit, Nuts and Vines, which promise to rival the immense production of California.

A climate tempered by the Gulf Trade Winds, making a delightful spot for an all-the-year-round residence, or an ideal location for a winter home, free from snow and ice,—fully equal to the most favored portions of this or foreign countries.

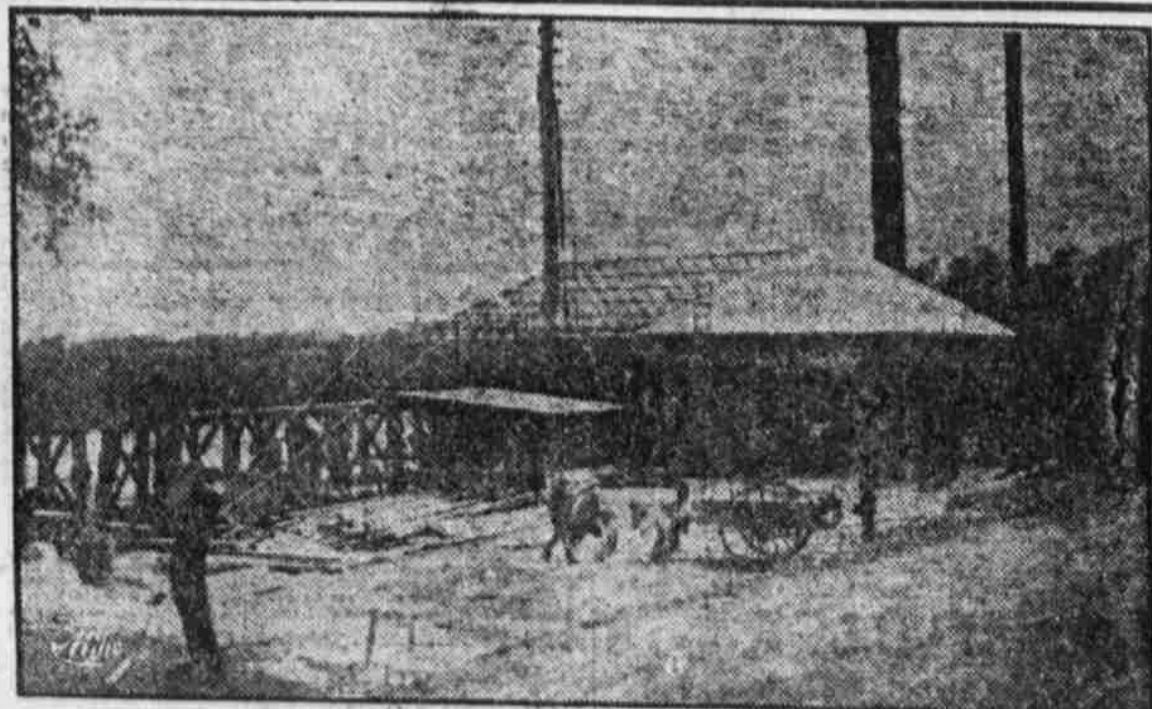
We have here, the unusual combination of:

**The most fertile soil; Abundance of water for irrigation; A climate unsurpassed; The cheapest labor in the country.**

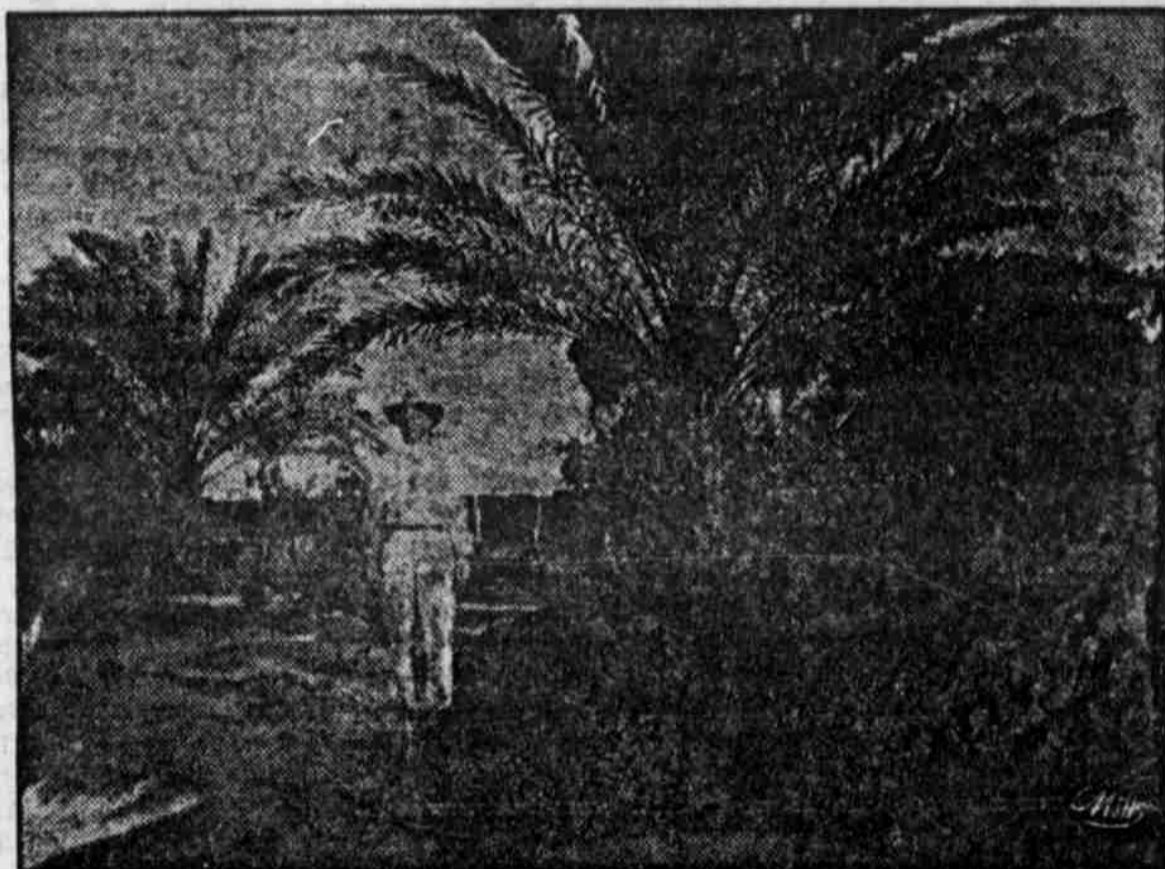
These four conditions exist only in the two counties at the southern extremity of Texas—further south than any other part of the United States.

Lands under less favorable conditions are readily selling at \$500 to \$1,000 per acre in Washington and California. We therefore confidently believe that, in the near future, this property will command a higher price than any lands in the Union.

The LaLomita lands at Mission are in the delta of the Rio Grande, and are rich sediment lands, with an abundance of river water for irrigation; in climate, fertility and products these lands are the equal of the Nile delta in Egypt. In truck growing this land produces earlier vegetables and fruits than any other part of the United States. Even as early as the first of January the Mission truck growers ship to northern markets carloads of cauliflower, cabbage, string beans and peas. Onions grown at Mission net from \$200 to \$500 per acre. Table grapes ripen two months earlier than in California, are shipped to northern markets early in June, and are also 1,000 miles nearer these markets than the California raised grapes. In sugar cane, especially, the LaLomita lands are superior to any part of the world, producing more cane to the acre and richer juice than any other country. Sugar cane raised in Hidalgo county won the gold medal at St. Louis.



Building the Big Pumping Plant Which Irrigates LaLomita Ranch, Mission.



J. W. Hoit Under Date Palm Tree at Mission

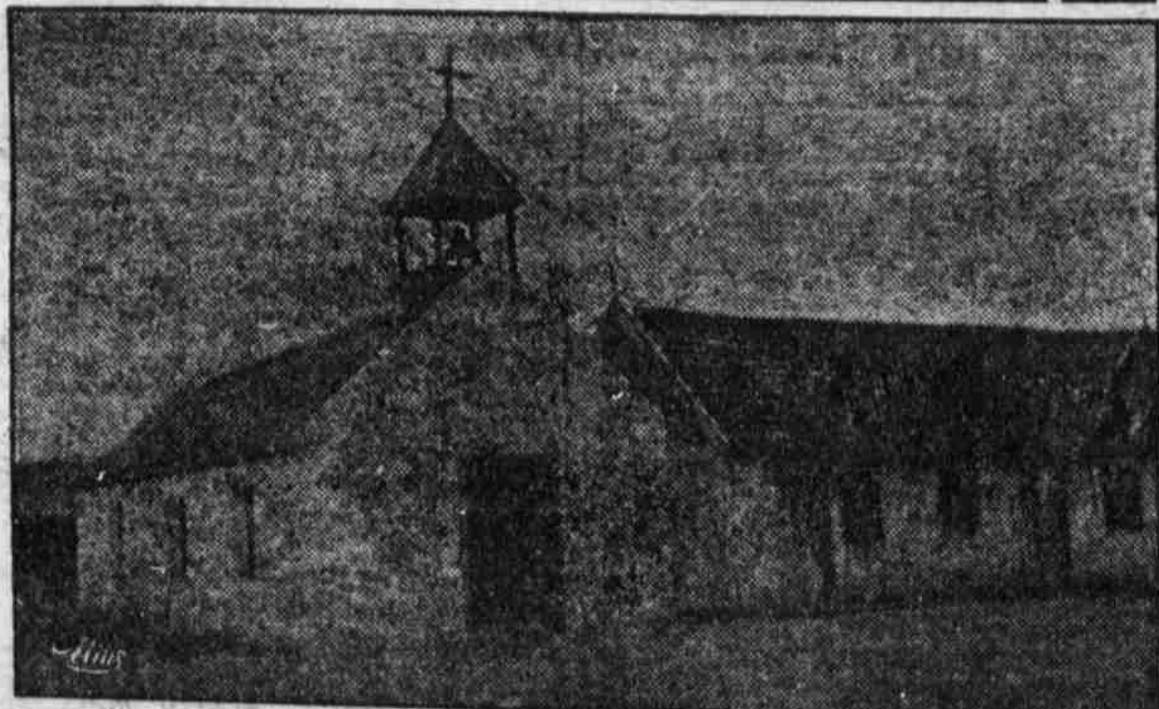
### Two Men Make \$10,000 Net in One Year From Onions

Two men came to Mission a year ago with two teams and a few hundred dollars in money, rented 43 acres of irrigated land, paying therefor \$20 per acre rent, and planted Bermuda onions. Notwithstanding it was a year when the markets were unfavorable, these two men received net from each acre of onions the sum of \$358.01. The men are W. P. Stites and W. E. Nicholson, whose address is Mission, Hidalgo County, Texas, and they will gladly verify these statements. Their 43 acres produced 34 car loads of onions, containing 17,061 crates, netting the growers \$15,394.64, the commission men \$1,320.00, the crate men \$2,900.37 and the railroads \$8,291.79. Off of these 43 acres of onions, Messrs. Stites and Nicholson paid their total living expenses, labor bills, rent, cost of crates, freight and all other incidental expenses, amounting to a little over \$5,000 and for their one year's work, they put in bank something over \$10,000. These men have now made enough to purchase their own lands on the LaLomita ranch at Mission, and are enthusiastic over the conditions and outlook for progressive farming at Mission.

We cordially invite your correspondence and investigation.

## CONWAY & HOIT

Mission, Hidalgo County, Texas



Mission of Oblate Fathers, Established 1861, LaLomita Ranch, Mission.