



Source of Our Inexhaustible Water Supply—Majestic Rio Grande at Headgate. No. 2.

How long will water run down hill? Always. That's easy, isn't it? It's the little, simple, "easy" things that count most in this life WHEN PROPERLY APPLIED.

A machine of fewest parts is best. Inventions founded on the simplest principles are usually most valuable. Scientific achievements based on the oldest, best known laws are the most practicable and the most reliable. YOU know that.

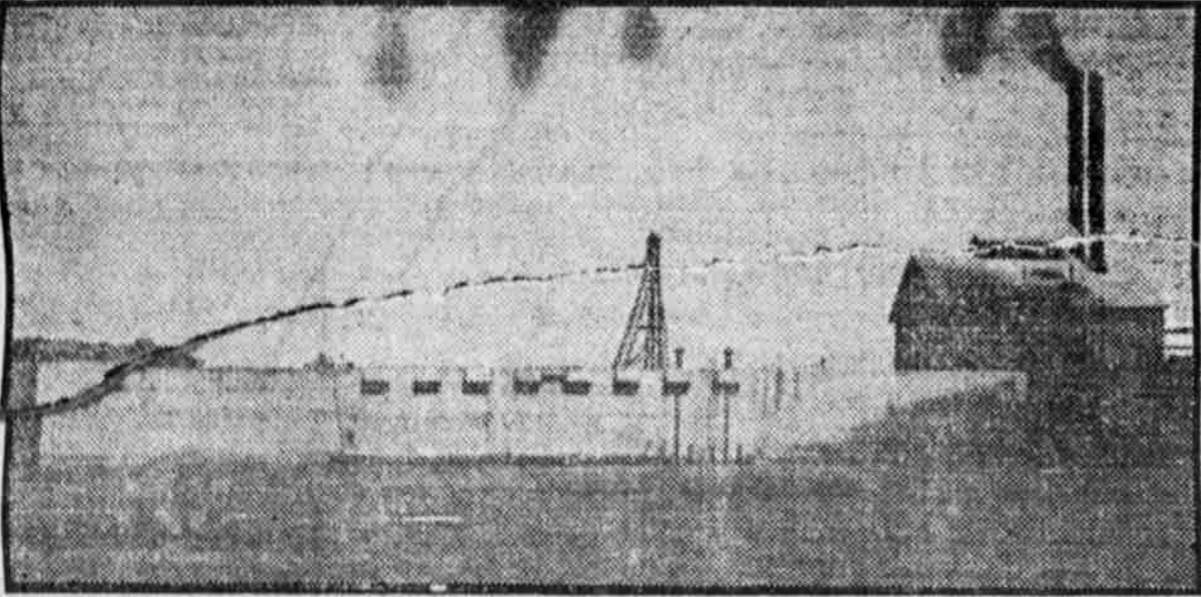
So it is with the wonderful irrigation system at San Benito. It's based on the simple, well-known fact that WATER SEEKS ITS OWN LEVEL. IT ALWAYS RUNS DOWN HILL.

This is the foundation of the assurance you have of an efficient and sufficient water supply at San Benito at all times.

This was the only factor in the farming equation in the Lower Rio Grande Valley that was wanting—an adequate water supply.

NATURAL CONDITIONS IDEAL

Here was soil—rich, alluvial silt, deposited through the ages by the waters of this river, for San Benito lies in the midst of the Delta of the historic Rio Grande.



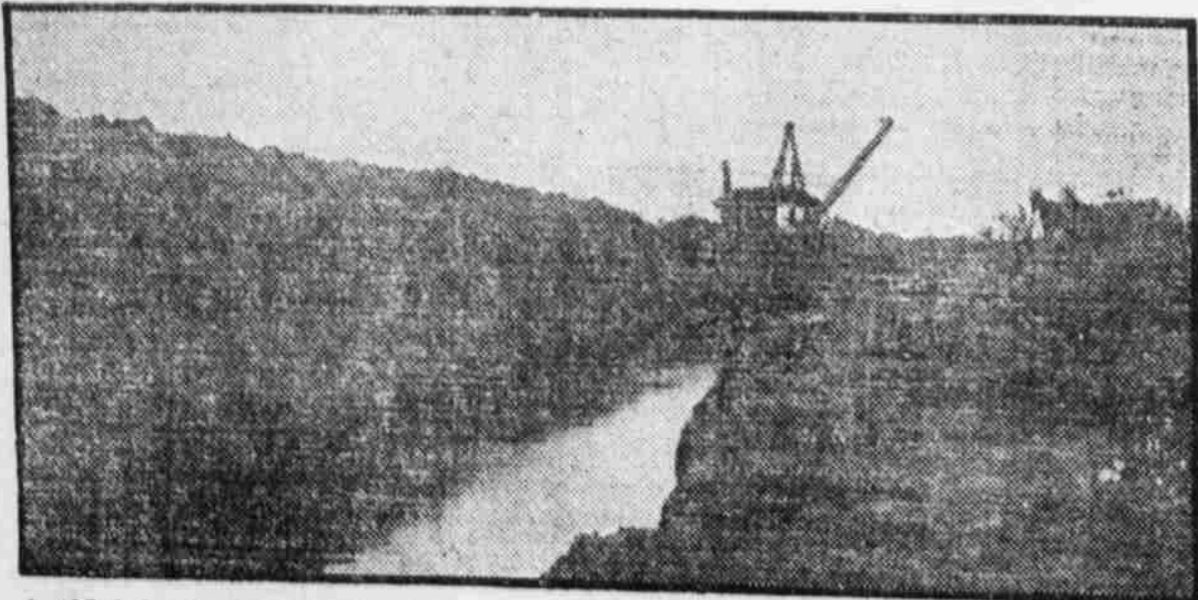
Headgate of the San Benito Gravity Canal System—Concrete and Steel—Cost \$60,000.

Here was a delightful, even climate, not too hot, never too cold. Here was sunshine—on an average about 350 days in the year of life-giving heat. And finally, here was a railroad running right along the coast, affording transportation facilities to the Texas cities, and from thence to the larger markets of the Northern cities. Here, in fact, were ALL the conditions necessary to ideal farming, EXCEPT THE WATER. And now that the water problem has been solved in such a practical, common-sense manner, guaranteeing an abundant supply just when needed and where needed (never too much), farming at San Benito is reduced substantially to a SCIENTIFIC BASIS.

The farmer can, as a rule, FIGURE HIS RETURNS WHEN HE PLANTS HIS SEED. This is the security we offer you, and all homeseekers at San Benito.

HOW this inexhaustible water supply was secured is an interesting story.

When Sam Robertson, the civil engineer and father of the San Benito enterprise, was building the main line of the St. Louis, Brownsville & Mexico Railway into Brownsville, he discovered the possibilities of the great gravity system of irrigation, and, as he says, kept it under his hat until he found financial backing.



Artificial Channel Dredged Through High Land Near the River to Conduct the Water From the Bottom of the River into the Old "Resaca" or Dry River Bed, Our Main Canal.

Remarkably Successful

In the Lower Rio Grande Valley

Great Gravity System of Irrigation, Turning Forty Thousand Acres of Ordinary Irrigation Overcome, Making San Benito the Most Productive Acres Selling Rapidly



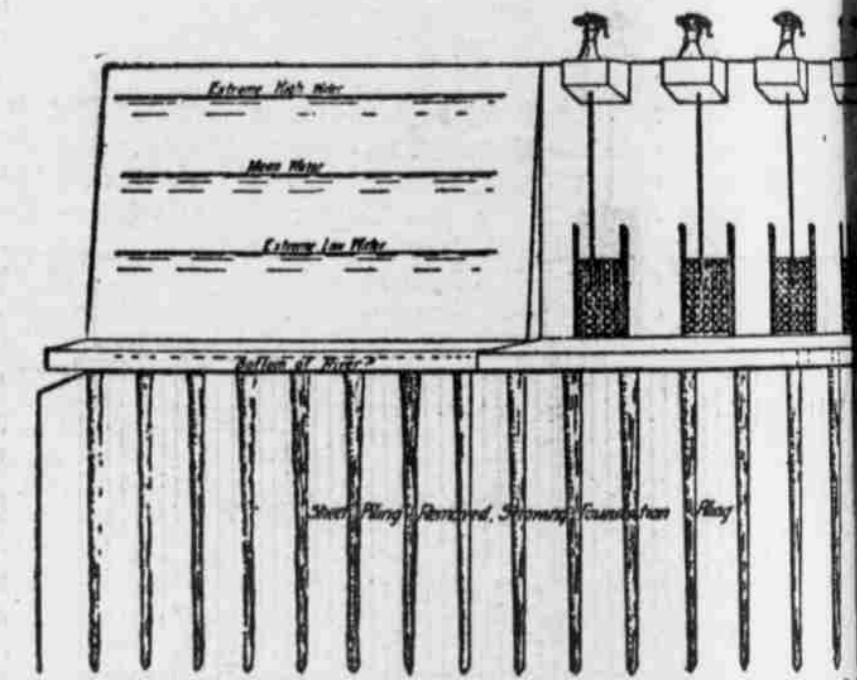
Sam A. Robertson, Civil Engineer, "Father" of the Wonderful Scheme of Gravity Irrigation Now Installed at San Benito.

But here I found I had to make a four foot cut through the banks of this Resaca to keep my level. I discovered that the banks of the old dry river bed were higher than the surrounding country. It set me to thinking, and I began to 'ride the country' and study it, taking levels and running preliminary surveys. I discovered that these old Resacas extended for many miles through this delta, even to the Gulf of Mexico; that their banks, like the banks of the present river, were also higher than the surrounding country, and that they were without doubt the old original beds of the Rio Grande ages ago, before it changed to its present course. My surveys showed that the highest elevation was at the river bank, and that after falling somewhat abruptly for a mile and a half, it continued to fall two feet to the mile. I found that the banks of the river were twenty-five feet and the bottom of the river eight feet higher than the top of the rails where San Benito now stands. It was plain that all that was necessary to make a complete gravity canal system was to get the water out of the river by means of a headgate and an artificial channel through the highlands that form the river bed into the old dry river bed or Resaca, and thence through the high banks of the Resaca onto the land."

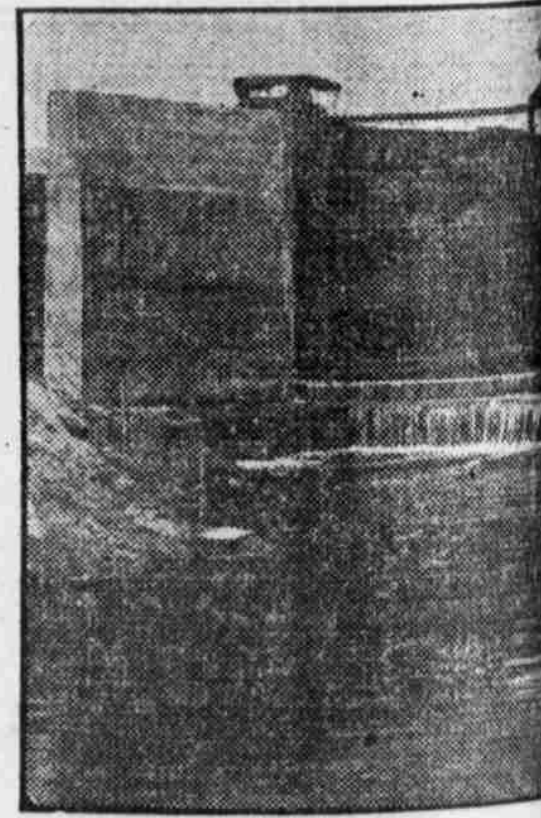
ONLY GRAVITY CANAL IN THE VALLEY

This foresight on the part of Mr. Robertson gave to the San Benito Land and Water Company the only gravity canal in the Lower Rio Grande Valley, and the best irrigation system in the Southwest. Instead of LIFTING the water from one to three times by means of pumps, as is so often done, we DROP it by gravity FIVE times through our locks and dams.

Thus it is that, by utilizing an old, dry and deserted river bed, our main canal is thirty-seven miles long, averaging 250 feet in width and 20 feet in depth and containing 20,000 acre feet of storage. That is, when full, our canal holds water enough to

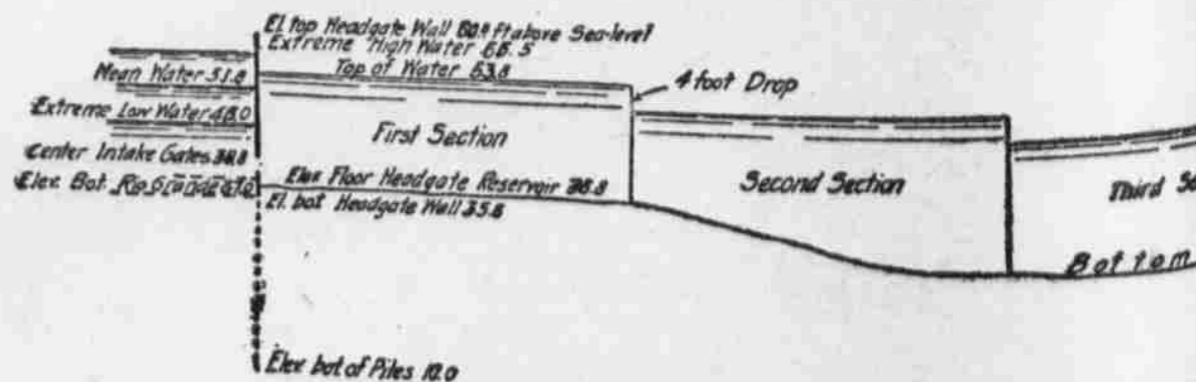


Face of the Massive Headgates Wall Showing the Structure and the Section



Lock No. 2 on Our Gravity Canal, Showing the Structure and the Section

New Illustrated Booklet Free



Profile of the Six Sections of the Canal, Showing the 4 foot Drop

Write SAN BENITO LAND AND WATER COMPANY, P. O. Box B,