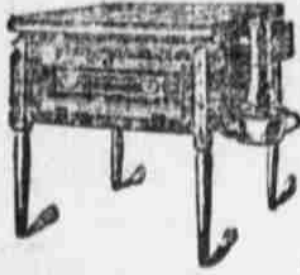


**WEIGHING THE SOUL**

A peculiar and interesting dispatch is printed by the New York World, under date of Boston, Mass., March 10. The dispatch follows:  
Five Massachusetts physicians of

the highest professional standing have just attained what they believe to be decisive results in the investigation, reverently undertaken, to determine the existence or non-existence of a soul in the human body, and to deter-

**Try a HATCH-ALL MACHINE**

We want every farmer and poultry raiser to get our 1907 catalog. It won't cost you anything.

**THOUSANDS USE THE HATCH-ALL**

and make money from early chicks. Get the catalog and find out all about this line.

**HEBRON INCUBATOR CO., Box No. 27 Hebron, Nebraska**

**"Letters to a Chinese Official"**

Being a Reply to "LETTERS FROM A CHINESE OFFICIAL"

By William Jennings Bryan

"A superb vindication of Anglo-Saxon civilization and ideals, written by Mr. Bryan in answer to the famous 'LETTERS FROM A CHINESE OFFICIAL,' an inspiring and eloquent confession of faith in the standards and purposes of our race, and more particularly those of the American people, permeated with a wise and serene optimism. There are passages that no man can read without elevation of his moral nature."

Substantially Bound, Postpaid, 55 Cents

ADDRESS **THE COMMONER** LINCOLN, NEBRASKA

**Buy a Home in Nebraska****FINE FARM LAND VERY CHEAP.**

FOR SALE—A number of one-quarter, one-half and whole sections of farm land in Perkins county, Nebraska.

This land is all rich prairie land, every acre of which can be cultivated. The soil is black sandy loam and very productive.

The country is healthful, the land beautiful, and suited to diversified farming.

There are well improved farms, good neighbors, good schools, good churches, and a good town all in sight of this land.

This land is located from one to five miles from a thriving town on the Burlington railroad.

There are three other good towns in Perkins county.

45 BUSHELS OF CORN PER ACRE WAS RAISED LAST YEAR ON LAND ADJOINING THIS LAND.

50 BUSHELS OF WHEAT PER ACRE RAISED ON THE SAME KIND OF LAND IN THE SAME COUNTY IN 1906.

ALFALFA GROWS IN PROFUSION NEAR BY ON THE SAME KIND OF LAND.

For each year during the past three years the crops raised on land in Perkins county sold for more than the COST PRICE of the same land.

Farm this land one year and its present selling price would be doubled.

It is as productive as the best land in Iowa or Illinois. Sell 20 acres in those states and your money will buy a quarter section of the land I am offering for sale. Excellent water at a depth of 40 feet. No better country on earth for raising all kinds of stock.

Oats, barley, and rye are profitable crops.

Do you want a farm while this land is within your reach? Cheap farm lands will soon be a thing of the past. A quarter-section of this land will make a nice nest egg. I am offering this land for less than one-fourth what the same kind of soil is selling for 50 miles distant. I can verify every statement made above. If interested call on me or write for prices and detail descriptions. As an investment or for a home it will pay you to investigate. Co-operation with other agents solicited. Address

**T. S. ALLEN,**

LINCOLN, NEB.

Room 365, Fraternity Bldg.

(For reference as to my reliability address Columbia National Bank, or First National Bank, Lincoln, Neb.)

mine also whether the departure of that soul from a human body is attended by any manifestation of a nature that can be made evident to material senses.

These investigations, guarded with the utmost privacy, have continued about six years in a sanitarium in this state. The results are known to but half a dozen scientists, although it is planned to make the whole discovery public soon.

The physicians say that through their researches the human soul has at last been catalogued upon scientific principles as an actual material thing, that when this soul flits from the body it diminishes the weight of the body by a certain measurable amount and this amount can be weighed in actual ounces.

The difference between the weight of the live human body and the body a moment after death, or when the soul has quit it, was found to be from half an ounce to one ounce, and to this it is said there can be no other possible explanation than that it is the weight of the human soul.

In every case the loss was shown after all known scientific deductions, such as the loss of respiratory air, of moisture and of all excretions and secretions of the body had been taken into consideration.

In order that the experimenting physician might accurately ascertain that this unaccountable loss was not due to some peculiar physical characteristic of sex, both men and women have been subjects of the experiments.

The method of finding this result, as followed by the doctors, was to place the dying patients in bed upon one of the platforms of a pair of scales made expressly for the experiments. These scales were so delicately constructed as to be sensitive to a weight of less than one-tenth of an ounce.

It was the desire of Dr. Duncan MacDougal, of Haverhill, to give no publicity to the facts until they were established beyond all doubt. He expressed surprise that his discovery should be known outside the Research club, but reluctantly consented to an interview.

He is a believer in neither spiritualism nor mysterious psychic phenomena except as they can be dealt with by science, and he began his statement with the declaration that his experiments were made purely with the idea of establishing scientific facts.

"During my practice among hospital patients and at the bedside of the dying my curiosity was aroused as to whether there might be some material change discoverable by actual tests which would throw a new light upon the mystery of the flight of life," he said.

"When a person dies the current belief is that his spirit, or soul, continues to live. My first thought was: Has continued consciousness and personal individuality any existence? Can it exist in space as nothing? It is known as a force, as a personality, real and actual. It is impossible to think of it as not occupying space. It must be a space-occupying body. With that granted, the next query was: Has it weight? Is it gravitated matter or some other form of unknown definition? Forthwith I began my experiments?"

"Four other physicians, under my direction, made the first test upon a patient dying with tuberculosis. This man was one of the ordinary type of the usual American temperament, neither particularly high-strung nor of marked phlegmatic disposition. We placed him a few hours preceding death upon a scale platform which I had constructed and which was accurately balanced. Four hours later, with five doctors in attendance, he died. The instant life ceased the opposite scale fell with a suddenness that was astonishing, as if something had been suddenly lifted from the body.

"Immediately all the usual deductions were made for physical loss of weight, and it was discovered that there was still a full ounce of weight unaccounted for.

"My fellow physicians were mystified and only half convinced. I, myself, had grave doubts that our calculations were correct. Otherwise, how was it possible to account for this strange loss? There was no known scientific manner of doing so.

"As a result of this doubt I submitted another subject afflicted with the same disease and nearing death to the same experiments. He was a man of much the same temperament as the preceding patient and of about the same physical type.

"The same result happened at the passing of his life. The instant the heart ceased to beat there was the sudden and almost uncanny diminishment of weight. As experimenters, each physician in attendance made figures of his own concerning this loss, and, at a consultation, these figures were compared. The unaccountable loss continued to be shown.

"The question then arose as to what the loss meant. It was a loss of substance, which could be obtained in known figures, and which was also such a singularly appreciable loss as to place it beyond all doubt that it might be due to any error-in calculation. The two separate differences obtained correspond, each being of about an ounce. But this was less remarkable than what took place in the third case. The subject was that of a man of larger physical build, with a pronounced sluggish temperament.

"When life ceased, as the body lay in bed upon the scales, for a full minute there appeared to be no change in weight. The physicians waiting in the room looked into each other's faces, silently shaking their heads in the conviction that our test had failed.

"Then suddenly, the same thing happened that had occurred in the other cases. There was a sudden diminishment in weight, which was soon found to be the same as that of the preceding experiments.

"I believe that in this case that of a phlegmatic man, slow of thought and action the soul remained suspended in the body after death, during the minute that elapsed before it came to the consciousness of its freedom. There is no other way of accounting

FOR AGENTS—AN OPPORTUNITY:

**"The World in Its Ways"**

BY

**William Jennings Bryan**

NOW READY FOR SOLICITORS

576 Imperial Octavo Pages. Over 200 Superb Engravings from photographs taken by Mr. Bryan.

Recounts his trip around the world and his visits to all nations. The greatest book of travel ever written. The people are waiting for it. The agent's harvest. OUTFIT FREE—Send fifty cents to cover mailing and handling.

The Thompson Publishing Co., St. Louis, Mo.

**40, 60 or 90 Days' Trial on "Old Trusty"**

Try chicken raising on the Johnson plan. My people are an enthusiastic lot. We get the results. 2-year guarantee. Low price. Old Trusty Catalogue tells the whole story—it's FREE—write for it today.

M. M. JOHNSON CO., CLAY CENTER, NEB.

**Subscribers' Advertising Dept.**

BETTER WAGES—FRAMING CHART—25 cents. Frames any roof. C. M. Osborn, Box 1920, Lincoln, Neb.

IF YOU WANT AN IMPROVED RICE plantation in east Texas, the best farm proposition of the times, write to GEORGE B. CONKLIN, Plaquemine, La.

TO EXCHANGE—20 ACRES CHOICE LAND on car line south-east of Lincoln; good, new seven room house; price \$8,000; for 100 acres bottom farm land in Oklahoma. Also grist mill and feed business in Gentry, Mo., price \$2,000, for a farm or city property. Address I. J. Holland, Lincoln, Neb.