



# Churches

**Quinn Chapel A. M. E. Church**  
9th and C Streets; Rev. J. B. Brooks, Pastor.  
9:45 a.m. Sunday School.  
10:45 a.m. Morning Worship.  
6:00 p.m. Young People's Fellowship.  
7:30 p.m. Evening Worship  
Tuesday 8:00 p.m. Prayer Meeting.

**Northside Church of God**  
3rd and T Street, Mrs. Alice Britt.  
10:00 a.m. Church School.  
11:00 a.m. Morning Worship.  
7:30 p.m. Evening Worship.  
7:30 p.m. Midweek Prayer Meeting.  
7:30 p.m. Friday Bible Study  
For place of meetings call 2-4673.

**Allen Chapel.**  
9:45 a.m. Sabbath School.  
10:45 a.m. Missionary Meeting.  
11:00 a.m. Morning Worship.  
4:00 p.m. Young People's Society.

**CHRIST TEMPLE**  
2149 U Street, Phone 2-3901  
Rev. T. O. McWilliams Jr. Pastor.  
**Order of Worship**  
Sunday School, 10 a.m.  
Morning Worship, 11 a.m.  
Service at at Carver Nursing Home, 2001  
Vine Street, 5 o'clock.  
Evening Service, 7:30 p.m.

**Mt. Zion Baptist Church**  
Corner 12th and F Streets; Rev. Wm. I. Monroe, pastor.  
10:00 a.m., Sunday school.  
11:00 a.m. Morning Worship.  
8:30 p.m. Baptist Training Union.  
8:00 p.m. Evening Worship.

**Newman Methodist**  
23rd and S; Ralph G. Nathan, pastor.  
SUNDAY—Church at study, 10, church at worship, 11 a.m.  
MONDAY—Trustee board meeting.  
WEDNESDAY—Gladstone service, 7 to 8 p.m.  
FRIDAY—Ministry of music, 8 p.m.

**CME Church**  
2030 I Street; Rev. W. M. Johnson, pastor.  
9:30 a.m. Sunday school.  
10:30 a.m. Methodist Training Union.  
11:00 a.m. Morning worship.

**Church of God Christ**  
9:00 a.m. Sunday school.  
8:30 p.m. Y.P.W.W.  
8:00 p.m. Evening worship.  
8:00 p.m. Tuesday and Friday, regular service.  
Pastor Rev. Charles Williams.  
7:30 p.m. Thursday prayer and Bible.

## Wilmington Catholic Schools Go Interracial

WILMINGTON, Del.—(ANP)—Catholic primary schools in this city went interracial with the opening of the fall term. The move, carried out without public announcement or fanfare on the part of parochial school authorities became known as Negro children who applied for admission to three previously all-white parish schools were accepted without question.

Children are being accepted in their parish schools without reference to their race as long as classroom space is available. In one instance several Negro Protestant children have been accepted.

The action does not represent a new policy. Interracial classes had previously been instituted at two elementary schools of the Wilmington Diocese, located in Maryland, at Elkton and Salisbury. The Salesianum, a private Catholic high school; and St. Elizabeth's Diocesan High school, have been interracial for the past two years. The Salesianum was the first institution in the state to admit Negro pupils where previously only white children had been enrolled.

REGISTER NOW TO VOTE NOV. 4th.

**AUTO PARTS**  
**MOTOR REBUILDING**  
**MOTOR EXCHANGE**  
**BEN'S NEW WAY**  
**AUTO PARTS**  
2018-2024 "O" St. Ph. 2-7039  
"9 out of 10 your best bet is Ben"

## Sunday School Lesson

The Glory of Solomon's Empire  
Scripture . . . 1 Kings 4:20-34; 7:1-8; 9:10 to 11:43.

Memory Selection . . . A man's life consisteth not in the abundance of things which he possesseth. Luke 12:15.

Present-Day Application  
By Bishop Frederick D. Jordan  
Los Angeles, California

All greatness, power and glory belong to God. The wealth, splendor and wisdom of Solomon have become proverbial. His glory and power led him to lose the humility before God which characterized his earlier years. The extension of commerce led to the introduction of foreign cults which had their marked effect upon the social life of the kingdom. Other religions were lax in their requirements of social purity. The decline of Solomon's fidelity of God is seen in his tolerance of foreign gods. The evil tendencies that ultimately undermined his glory are always present, but as long as we are willing to use our material wealth, personal riches, political alliances and our total organization for the glory of God all will be well. The folly of trusting in worldly riches is obvious, the change in Solomon's character came about because of his phenomenal success, but this lesson teaches us that better than grandeur, better than gold, than rank and titles a thousandfold, is a healthy body, a mind at ease, and simple pleasures that always please. A heart that can feel another's woe, that has learned with love's deep fires to glow, with sympathy large enough to understand all men as brothers, is better than gold.

REGISTER NOW TO VOTE NOV. 4th.

**ROSE MANOR STUDIO**  
1319 O Street  
Phone 2-2247  
Portraits by Appointment  
George Randol, P. A. of A.  
Prices reasonable  
Work guaranteed

## OUTDOOR NEBRASKA

By DICK H. SCHAFFER  
NEBR. GAME COMMISSION

LINCOLN, Neb. — The spring flooding, dry weather in some sectors of the state and regular seining work together make the Game Commission's salvage work for '52 the largest on record.

Supt. Paul Todd and his seining crew have already salvaged more than 150,000 warm water fish and 70,000 pounds of carp. And—the greatest share of the work is still on the agenda.

During spring, many areas filled with water that never did before. Little rain fell in many of these areas. Some of the small bodies of water began drying up and had to be seined. The shallowness of the water would mean almost certain death for the fish in winter as they would "freeze over."

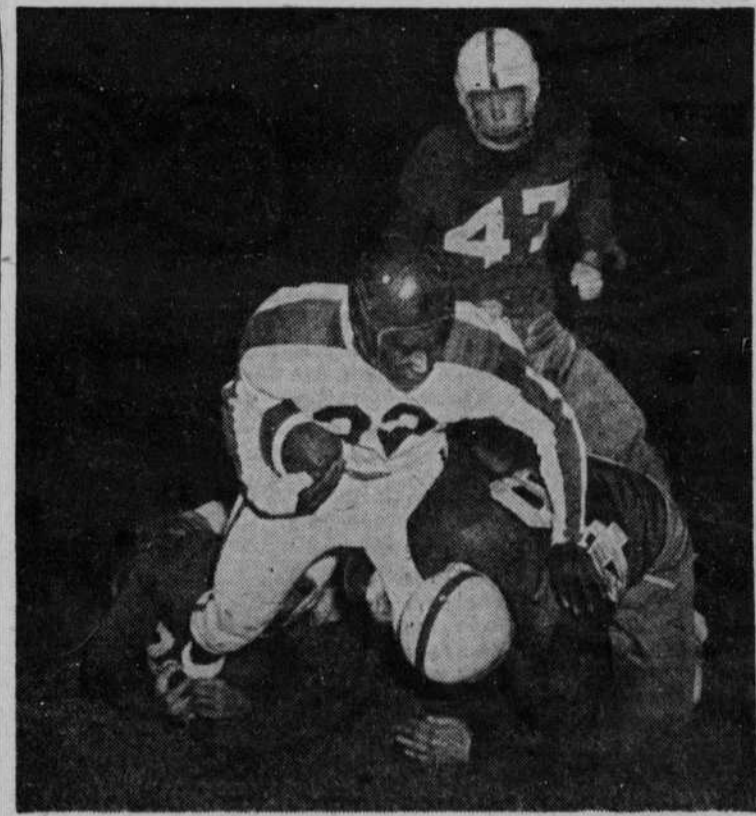
Flooding early in the year filled many backwater areas and low spots which did not drain. These are now drying up and would also "freeze over" this winter, killing the fish. Some of these have already been seined while the remainder must be worked before cold weather arrives.

Largest salvage assignment to date this year occurred at Fish lake southeast of Bassett. There, many fish were removed. It was not necessary, however, to take all of the fish. Cody lake north of Cody is dangerously low and will have to be seined before winter.

The salvage work made necessary because of the spring flooding and dry weather is in addition to the regular salvage work conducted by the Game Commission. Removal of fish from irrigation canals is a regular fall assignment and requires almost full attention of the seining crew until winter.

Fish salvaged from the men-

## King Paces LHS Attack With 2 TD's in Waterloo Game



Courtesy Lincoln Star  
**TED KING**, Lincoln's ace leather-lugger, gets tackled by Rich Roberts (48) of West Waterloo as he returns a second-quarter kickoff 17 yards. Setting his sights on the fleet King is Bob Wheeler (47).

Ted King trotted the Oval's sod in mid-season High School defeated West Waterloo, Ia., 27-6, in an intersectional headliner.

The white-clad All-State wraith cake-walked his way to a pair of touchdowns on runs of 68 and 88 yards to pace the Links' offensive game.

On both occasions he threaded his way—sometimes with almost leisurely abandon, at others with jet-plane speed—through the entire lineup of West players, who clutched vainly for the apparition which suddenly was not there.

tioned waters are generally stocked in nearby waters free from danger of "freeze out."

The Links scored in every quarter, knitting a tally sheet composed of King's efforts and those of Bob Barnett and Tackle Dean Stoneman.

Barnett augmented a superb game at end by gathering in a 20-yard pass from Jack Curtis on the 25, eluding a pair of would-be tacklers, and sprinting to pay dirt. Stoneman picked up a punt blocked by End LeRoy Butherus and scampered some 15 yards across the double stripe. Butherus, who swarmed in on Warhawk backs all evening, bludgeoned Larry Woodard's boot from the 30 back to where Stoneman escorted it across.

**The WHITE FURNITURE COMPANY**  
**First in Furniture**  
**Appliance and Rugs**  
its  
108 North 10th St.  
Just 27 Steps North of 10th & O Street

Where Your Furniture Dollar Buys More  
1532 O Street  
**Shurtleff's Furniture Co.**

Your Old Clothesline is Worth \$27.00  
at the **GAS** Company  
Bring it in tomorrow  
Your old clothesline is worth \$27.00 on the purchase of a new Bendix automatic gas dryer that takes the hard work out of wash-day!  
Regular Price \$269.00  
Less Clothesline 27.00  
YOUR SPECIAL PRICE **\$242.00**  
Low Down Payment  
Extra-easy Budget Terms  
**The GAS Company**

**Register Now \* \* \* Vote November 4th**