

ONE REASON FOR MILK SHORTAGE IN NEW YORK

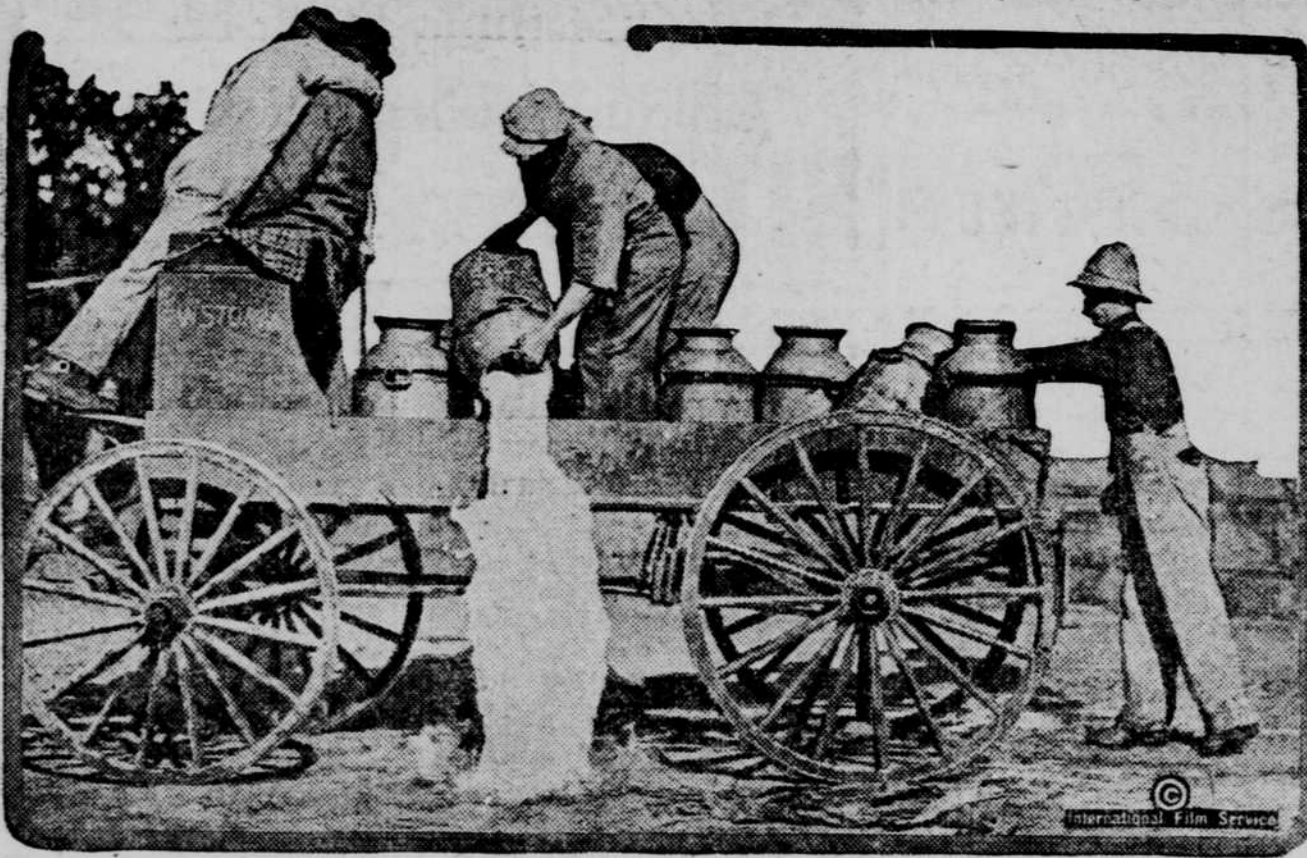
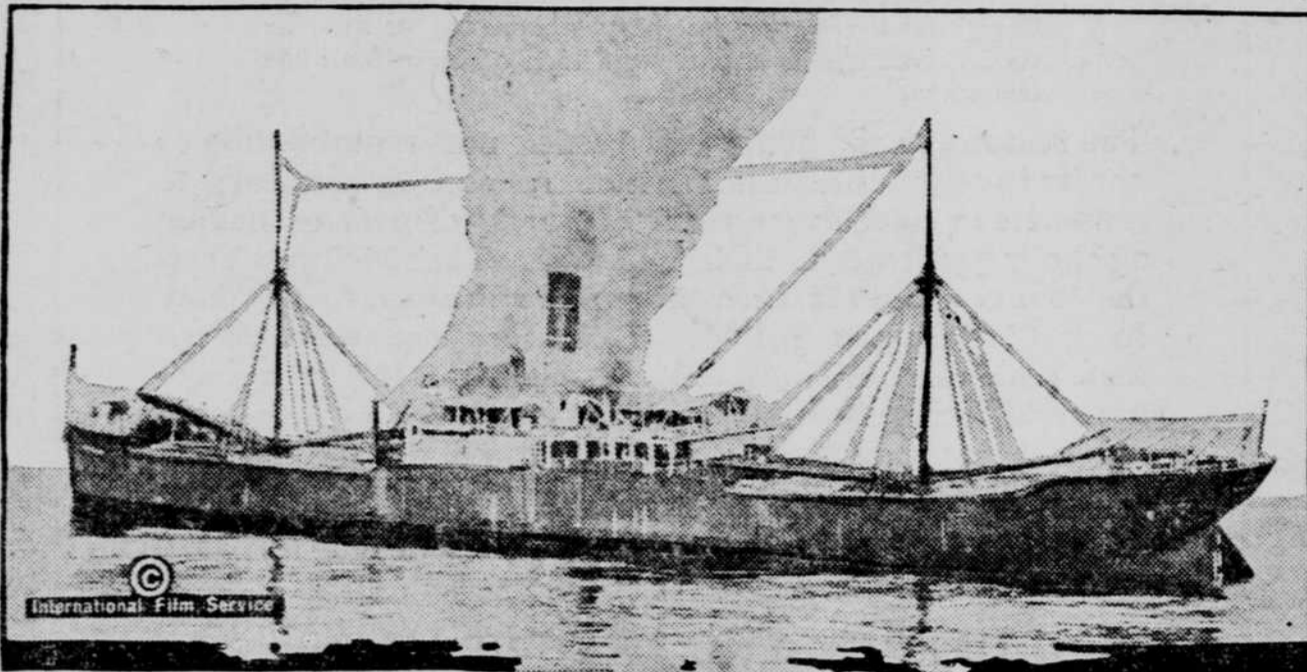


Photo shows rioting at Brewster, N. Y., one of the great sources of New York city's milk supply. Farmers who refuse to sell to dairies at the usual price are attacking and spilling the milk supply of those who are on their way to the dairies. As a result of the statewide strike of the farmers the milk supply of New York city has been cut in half.

ANTILLA ON FIRE OFF THE VIRGINIA CAPES



Photograph shows the Antilla, the Ward line steamer, on fire off the Virginia capes just as the coast guard cutter Onandaga came to its rescue. Flames were raging so that the crew of the Onandaga found it impossible to fight them. A number of the crew of the Antilla were badly burned. The crew and passengers were taken on board the Onandaga.

FINEST HOSPITAL TRAIN IN THE WORLD



A train consisting of ten Pullman cars converted into a complete hospital train is stationed at Fort Sam Houston for the use of Uncle Sam's troopers on the border. Though it is no more serviceable than similar trains of a number of belligerent powers in Europe, it excels all foreign equipments in luxurious appointments. The photograph shows nurses and an interne in the surgical dressing compartment.

ACCIDENT IN THE ASTOR CUP RACE



This remarkable photograph taken during the running of the one hundred mile of the Astor Cup race, at Sheephead Bay speedway, New York, shows Ruckstall crawling out from beneath his car after it had turned turtle near the bend of the main stretch of the course. Ruckstall was slightly injured, but his mechanic escaped unhurt.

BITS OF INFORMATION

The ordinary year ends on the same day of the week as that on which it begins.
 Color blindness is said to have been discovered by the famous Doctor Priestley, in 1777.
 No less than 5,000 inventions have been submitted to the navy board in seven months.
 By an electrical refining process a plant in Norway is producing 6,000 tons of zinc annually.

Paris has the largest steam turbine electric plant in Europe, a street railway power station producing 120,000-horse power.
 A patented rubber substitute is made by mixing gelatin with glycerin and a solution of camphor in acetone and treating the mass with sulphur.
 A series of electric buttons, the correct combination of which to produce results is known only to authorized persons, features one automobile starter.

MME. BERNHARDT IN AMERICA



Specially posed photograph of Sarah Bernhardt, the noted actress, as she appeared after her arrival on the steamship Espagne. The photograph was taken in her suite in a New York hotel.

Hint for Builders.

The factory inspection department of the state of Illinois has issued a gratuitous suggestion to architects, builders and factory owners recommending the incorporation of an I-beam into the construction of all large buildings, supported by brackets extending from the upper part of the building by which scaffolds may be supported for the use of painters, sandblast cleaners and others having occasion to work on the front of the structure. The beam furnishes a track for trolleys from which the scaffolds are hung, and is a safety feature and a great convenience, saving a great deal of valuable time usually spent in rigging up devices of one kind or another to support scaffolding. It allows the swinging platform to be moved rapidly in any direction, does away with thrustouts, and the movements of the men are not attended by such great risks as are otherwise encountered.

On the Chicken Pullman.

The chicken Pullman, so much advertised for shipping both chickens and turkeys to the city markets, is being improved this year by the addition of collapsible steel crates. These crates are lighter and easier to handle than the wooden ones and they can be thoroughly cleaned after each trip. They are also more durable. Their crowning advantage is the fact that each crate can be folded into a package less than three inches high, so that the return shipment of empty crates is reduced to a minimum size.

BUSINESS PRINCIPLES APPLIED TO DAIRY



MAN FEELS INDEPENDENT WHEN HE HAS GOOD HERD.

Prepared by the United States Department of Agriculture.
 There are so many leaks in the dairy business that only by the use of the best business principles can it be made permanently profitable. Individual cows must each make a profit over the cost of feed; this can be determined only by weighing each cow's milk and the feed that she consumes. The old argument that the best cows are known by having some foundation, but few men know the poorest cows, and the latter go to make up the average as well as the good cows. No dairy is better than its average production. If this is too low, the herd is not paying a profit. Business principles must therefore be applied to lowering the cost of milk production. Efficiency is as much a necessity on the farm as in the factory. Few men feed their cows in proportion to the quantity of milk produced, yet what could be more simple and more nearly right? With little regard for her needs, feed is put before the cow in plenty if it is cheap, and in less quantity if the price is high. Cows use about 60 per cent of their feed merely to keep their bodies working, and it is the quantity that is fed above this fixed necessity that furnishes the material for the milk. Too often the dairyman says "I would do all the up-to-date things if I had the time." Can the storekeeper afford to run his business without keeping books? Yet that is what the farmer is doing.

Benefits of Cow Testing.
 Working in co-operation, dairymen can obtain the benefits of business

methods at a very small cost through the organization of a cow-testing association. An organization of this kind that hires an expert to determine the feed cost of milk or fat production for each cow in the herds of the members is easily possible. Such an expert travels from farm to farm, spending usually one day at a place. Each cow's milk is weighed and tested, as is her feed. An account is opened in the ledger for each animal and at the end of the year the profit or loss of each one can be ascertained. The heifers of good cows should go to the slaughterhouse, otherwise they may be the means of ruining the owner's business. A cow-testing association is a co-operative organization with local offices, and one that can be of use also for advertising the sale of cattle. The results obtained with such advertising have often been remarkable. Dairymen and breeders are certain to be interested in such a movement for the bettering of the business.

At present about 350 of the organizations keep the records for about 150,000 cows owned by about 7,500 farmers. These men are realizing the benefits of co-operation.

The dairy business is well adapted for co-operative organization, and concerted effort by dairymen usually means much greater profits on milk and cream through the elimination of waste, the application of more economical methods of production and manufacture, and the development of more productive cows.

UTILIZE CORNFIELD TO PREPARE LAMBS

Light Corn Crop Makes It Necessary to Get Most Possible Out of the Field.

By H. HACKEDORN, Missouri Agricultural Experiment Station.
 The light corn crop this fall makes it necessary to get the most possible out of the field. The practice of utilizing the undergrowth in the cornfield and the lower leaves of the cornstalks by pasturing the field with lambs has become quite a common one.

Fifty-three to 60-pound western feeding lambs are used. The lighter lambs are used by those who wish to make a 90 to 120-day feed, finishing off the lambs in dry lot the last 30 or 40 days. The heavier lambs are used by feeders wanting to make a 60 or 70-day feed. Good to choice lambs are commonly fed. The number of lambs per acre will depend upon the amount and condition of the forage. Usually 3 to 4 lambs per acre will be sufficient.

A single-deck carload of lambs will be about 150 or 160. Lambs can be purchased at the Kansas City, St. Louis, St. Joseph, and Omaha stock yards through any reliable commission house.

The following is a reliable quotation from a sheep commission company on the Kansas City yards: "Lambs have been fattened very successfully in the cornfield by a good many of our customers. Conditions may be a little different on account of the dry weather, and no doubt the lambs will require a 30 days' feed in the feed lot before they are considered finished."

"We look for a good high market throughout the fall, and if we are going to make a guess as to the market the first of December, we would say from \$10.50 to \$11.00. There is more reason for us to expect high prices this year than last."

The department of animal husbandry of the Missouri College of Agriculture will be at the service of any Missouri farmer who wishes help in buying lambs or assistance in the management of them.

Mulching—
 Prevents the growth of weeds. Retains moisture in the soil. Adds humus, one of the necessary elements.

Short Bite for Sheep.
 Sheep will thrive on a short bite, but don't let the bite get too short.

Properly Made Collar.
 A properly made collar, made especially for the horse that is to wear it, becomes adjusted to the conformation of the neck and shoulders.

Stock for Small Farmer.
 The small farmer can keep a variety of live stock sufficient to produce something to sell and bring in a bit of ready cash every month in the year.

Sow Rutabagas.
 Sow turnips or rutabagas on the newly plowed strawberry bed.

INFLUENCE OF AGE ON VALUE OF HORSES

Animal Considered to Be in His Prime Shortly After He Is Six Years of Age.

(From the United States Department of Agriculture.)
 Estimates obtained by the department from about 150 owners indicate that a farm work-horse is considered to be in his prime shortly after six years of age, and that even though still perfectly sound, he has declined in value about one-half from the maximum when between fourteen and fifteen years. The estimates were made on the basis of a maximum value of \$250, and covered values by yearly steps from birth to sixteen years of age. The accompanying table, showing the rise and fall of value with age in dollars and in percentage of maximum value, summarizes the results of this study.

Influence of Age on Values of Farm Work Horses.

Age.	Maximum value, \$250.	Per cent of maximum value.
Birth	\$39	16
6 months	53	21
1 year	96	38
2 years	142	57
3 years	188	74
4 years	220	88
5 years	245	97
6 years	248	99
Maximum	250	100
7 years	247	98
8 years	241	96
9 years	227	91
10 years	209	84
11 years	190	76
12 years	174	70
13 years	154	62
14 years	137	55
15 years	119	48
16 years	101	40

Trees Starved to Death.
 Many fruit trees are just about starved to death. They show it in every limb. The soil should be made richer, so that the roots may find nourishment for fruit, leaf and branch.

Take Care of Pastures.
 Pastures, like most meadowlands, are not given the care and attention they merit, for no other lands on the farm will produce such profits as they if properly managed.

Improves Milk for Pigs.
 A little carbonate of soda will keep separator milk quite sweet and palatable for the pigs.

Swill Sours Quickly.
 Swill sours very quickly in hot weather. Keep the troughs clean, because the pigs never thrive on rotten feed of any kind.

Thin Overloaded Trees.
 Apple trees that are overloaded with fruit should have much picked off, so that those left may get all the food needed.

Capacity of Silo.
 A silo 14 feet in diameter and 35 feet high will hold 100 tons of silage.

Buy materials that last

Certain-teed

Fully guaranteed — best responsibility — best responsibility

Roofing

For sale by dealers everywhere at reasonable prices

General Roofing Manufacturing Company

World's largest manufacturers of Roofing and Building Papers

New York City Chicago Philadelphia St. Louis Boston Cleveland Pittsburgh Detroit San Francisco Cincinnati New Orleans Los Angeles Minneapolis Kansas City Seattle Indianapolis Atlanta Richmond Houston London Sydney

We are wholesale distributors of Certain-teed Products. Dealers should write us for prices and information.

Carpenter Paper Company, Omaha, Neb.

W. L. DOUGLAS

"THE SHOE THAT HOLDS ITS SHAPE"

\$3.00 \$3.50 \$4.00 \$4.50 & \$5.00 FOR MEN AND WOMEN

Save Money by Wearing W. L. Douglas shoes. For sale by over 9000 shoe dealers. The Best Known Shoes in the World.

W. L. Douglas name and the retail price is stamped on the bottom of all shoes at the factory. The value is guaranteed and the wearer protected against high prices for inferior shoes. The retail prices are the same everywhere. They cost no more in San Francisco than they do in New York. They are always worth the price paid for them.

The quality of W. L. Douglas product is guaranteed by more than 40 years experience in making fine shoes. The smart styles are the leaders in the Fashion Centers of America. They are made in a well-equipped factory at Brockton, Mass., by the highest paid, skilled shoemakers, under the direction and supervision of experienced men, all working with an honest determination to make the best shoes for the price that money can buy.

Ask your shoe dealer for W. L. Douglas shoes. If he cannot supply you with the kind you want, take no other make. Write for interesting booklet explaining how to get shoes of the highest standard of quality for the price, by return mail, postage free.

LOOK FOR W. L. Douglas name and the retail price stamped on the bottom.

W. L. Douglas Boys' Shoes Best in the World \$3.00 \$2.50 & \$2.00

W. L. Douglas Shoe Co., Brockton, Mass.

Shortening Bird Season.
 Pennsylvania is the latest of the states to take up the question of shorter open seasons on game birds, and good reasons for curbing the activities of hunters are presented in a statement of the game commission now being sent to individuals and sporting associations.

Birds are being exterminated under the present laws, and the remedy proposed is in restricting the season to one month and changing the date until the birds are full grown and better able to take care of themselves.

What particular hardship would there be in ordering a close season for two, three or five years and then seeing that the law is rigidly enforced? Quail and other game birds need more protection than the existing laws have given them, and if all the states would agree upon an adequate program of conservation the country would be benefited by the saving of the food products now destroyed by insects.

Providence Journal.

A crafty man isn't necessarily a snail.

SUFFERED FOR FOUR YEARS.

Mr. J. M. Sinclair of Olivehill, Tenn., writes: "I strained my back which weakened my kidneys and caused an awful bad backache and inflammation of the bladder. Later I became so much worse that I consulted a doctor, who said that I had Diabetes and that my heart was affected. I suffered for four years and was in a nervous state and very much depressed. The doctor's medicine didn't help me, so I decided to try Dodds Kidney Pills, and I cannot say enough to express my relief and thankfulness, as they cured me. Diamond Dinner Pills cured me of Constipation."

Dodds Kidney Pills, 50c. per box at your dealer or Dodds Medicine Co., Buffalo, N. Y. Dodds Dyspepsia Tablets for indigestion have been proved. 60c. per box.—Adv.

Mexico's Money.
 In spite of the increasing price of paper, the paper money in Mexico gets no additional value.

Imagination doth make liars of us all.

Fruit juices make the best drinks.

RED LINE

A \$1,000,000 pair of rubber boots!

"HIPRESS"

WITH THE RED LINE 'ROUND THE TOP

Think back four years. All rubber boots were black. They wore none too well. Then Goodrich, the world's largest rubber factory, decided to build boots IN SOLID ONE-PIECE, WEAR-RESISTING CONSTRUCTION like Goodrich Auto Tires. \$1,000,000 was spent perfecting "Hipress." Tough, new auto tire rubber was used. They were made rich BROWN in color. 5,000,000 pairs have since proved that "Hipress" outwear all others, usually 2 or 3 to 1. All styles—at 38,000 stores.

The Original Brown Rubber Boots and Heavy Shoes

The "Self-Made" Rubbers—20,000,000 pairs sold without a lick of advertising. They give double wear—that's why.

For 10 years the sales of Goodrich "STRAIGHT-LINE" Rubbers have multiplied each year due solely to their superior wearing qualities. Demand has always exceeded supply. Only through greatly enlarged factory facilities are we now able to start advertising.

At 38,000 stores, ask for

"STRAIGHT-LINE"

RUBBER OVERSHOES

—not just "rubbers"

The B. F. Goodrich Company, Akron, Ohio
 Makers, also, of TEXTAN—the Goodrich Sole that outwears leather on leather shoes

WINCHESTER

HUNTING RIFLES

When you look over the sights of your rifle and see an animal like this silhouetted against the background, you like to feel certain that your equipment is equal to the occasion. The majority of successful hunters use Winchester Rifles, which shows how they are esteemed. They are made in various styles and calibers and ARE SUITABLE FOR ALL KINDS OF HUNTING