

STOCK BRANDS.

THE JOURNAL will publish your brand, like the following, for \$2.00, per year. Each ad...

\$500 REWARD.

For the arrest and conviction of any party or parties stealing or disfiguring any brands...

F. E. JANDT.

Brand 60, 117, or [Symbol] on left hip... [Symbol] on left jaw, [Symbol] on left hip of cattle.

GEORGE SWANSON.

Cattle branded [Symbol] on left side. Horses branded [Symbol] on left shoulder. Also [Symbol] on cattle and horses...

J. B. PARKER.

Horses branded on [Symbol] left shoulder and [Symbol] Cattle same on left [Symbol] hip. Sheep branded on back or [Symbol] on neck of sheep.

DEEP CREEK LIVE STOCK CO.

[Symbol] Branded on left hip of Cattle and on left cheek of Horses. Range on Deep Creek.

CHARLES NEWMAN.

The brand represented in this notice and brand-ed any where on left side of cattle, and over-lap out from the right ear.

SAMUEL KNORI.

Cattle branded any where on left side of the animal. Range on Prairie Dog and Monroe Creeks.

REWARD.

will pay \$5.00 reward for each head of Live Colville's horses branded on either jaw or thigh turned over to John Bieser on Running Water, also \$100.00 for proof to convict any person unlawfully handling any of said horses.

Horses branded on right thigh and shoulder and [Symbol] on right Jaw. Also, I have Horses branded on left thigh

J. S. TUCKER.

Branded on left shoulder of horses and on left side of cattle. And this [Symbol] on right side. This on [Symbol] right side of cattle too. Range on White River, near Glen.

ROBERT F. NEECE.

Cattle Branded [Symbol] on left side. Range on [Symbol] [Symbol] 50 on left hip shoulder or side. Range on Running Water. P. O. Address Agate, Nebraska.

BREWSTER & CO.

Cattle brand-ed same as that [Symbol] on left shoulder.

J. T. HEWITT.

Cattle Branded [Symbol] on left side. Range on Running Water, Post Office Address, Harrison, Nebraska.

Press-Journal

THURSDAY, April 23, 1903. C. C. Burke, Prop.

ENTERED IN THE POST OFFICE AT HARRISON NEBR. AS SECOND CLASS MATTER

OFFICIAL PAPER OF SIOUX COUNTY.

One Dollar Per Year.

JOHN T. SNOW.

Horses branded [Symbol] on left skull [Symbol] on left shoulder and Cattle [Symbol] on left side. Post Office Address, Patrick, Laramie Co. Wyo.

JOHN A. HANSON

Owms the following brand on either side: W-1. Also MG on cattle and horses—cattle on left side horses on left shoulder. Range on Silver Springs and east of state line. Postoffice—Harrison Neb.

ANDREW CHRISTIAN

Cattle brand-ed on left side same as cut and horses brand-ed on left shoulder same as cut are the property of Andrew Christian and range tributary to Van Tassel Springs. Address, Kirtley, Wyo.

HENRY WARNEKE.

Cattle brand-ed on left side. Range on Running Water Creek. P. O. Address Harrison, Nebraska.

Cattle branded [Symbol] on left side also [Symbol] [Symbol] on left side Cattle branded [Symbol] on Left Hip

HENRY WEISE, Foreman

P. O. Address, Glen, Neb. OCTAVE HARRIS. Cattle branded as shown on left side with over bit on left ear. Range on Running Water, P. O. Address, Marsland, Nebr.

J. R. HUNTER.

Cattle branded as shown in cut, on right side, hip, or shoulder. Also —a— on left side. Right ear clipped. \$100 REWARD will be paid for evidence convicting any one for running off or in any way tampering with stock having any of the above brand or brands. Ranch at Andrews, Nebr. Address, Harrison Nebr.

J. H. DENSLOW.

Cattle branded on right side same as cut. And also D on right hip. Horses branded [Symbol] on right shoulder or jaw. Range on White River, on the old Dave Colville ranch. William. Huntley foreman. P. O. Address, Glen, Nebr.

J. LEVER.

Cattle branded [Symbol] on LEFT SIDE. P. O. Address, Chadron Nebraska.

ED. MANON.

Cattle Branded, [Symbol] on left side. Range on Running Water. Address Agate, Neb.

The Women Of It. Parker—Ah, I see you have a parrot. How long have you had it? Marvin—Three weeks. Parker—Can it talk? Marvin—Don't know. My wife hasn't given it a chance yet.

J. H. WILHERMSDORFER, WATCHMAKER

& JEWELER

All kinds of Gold and Silver work done. Rings made to order. All work guaranteed.

HARNESS, SADDLES, and RANGE GOODS.

Harness made to order. Saddles re-covered.

CHARLES H. NEWMAN, SUCCESSOR to G. W. HESTER,

DEALER IN

Lumber, Doors, Sash, Lime, Coal, Wagons, Buggies, and Machinery of all kinds. Also Wind-Mills, Towers, Piping, Pumps, and everything in that line.

I also carry a large stock of feed, ground and unground. I make a specialty of repairing Wind-mills.

Mail Orders will receive prompt attention.

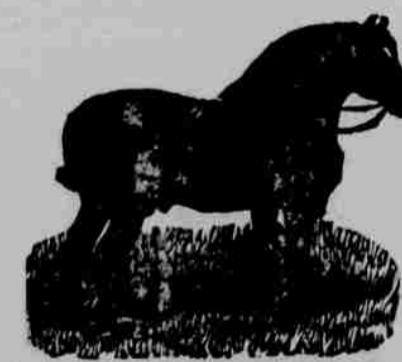
HENRY WARD BEECHER.



PEDIGREE.

Sired by Rosebery, No. 265. Dam 1st by Duke of Cleveland, No. 97. 2nd by Michael, No. 205. 3rd by Barnaby, No. 18. 4th by King George, No. 161, by Victory No. 836. REMARKS: Dam was a Hamaletonian mare of rare merits and a good trotter. TERMS—\$6.00 to insure colt to stand and suck.

ROCK.



ENGLISH SHIRE STALLION.

TERMS—\$8.00 to insure colt to stand and suck.

DOCILE.



PERCHEON AND MORGAN STALLION.

TERMS—\$7.00 to insure colt to stand and suck.

The above stallions will stand at our barn in Harrison this season. Fees will be due and payable at once in case mares are disposed of or removed from the county. Call and see us if you desire the service of horse this season. DIECKMANN & LACY.

REMEMBER Marsteller Bros.

HANDLE THREE OF AS GOOD BRANDS OF SHOES AS ARE MADE IN AMERICA.

THE SELZ SCHWAB SHOE CO. CHICAGO

Is the largest manufacture of Shoes in the world And the old reliable line of M. D. WELLER of Chicago

And F. Mayer and Co. Shoe of Milwaukee And a full line of Mens', Womens', and Childrens' Over Shoes, And we carry a full line of Dry Goods, Duck Coats and Caps, Groceries, Hard-Ware, Flour and Feed And a nice line of fancy Candies.

Come and get our prices, which are always the best in town.

MARSTELLER BROS.

The Commercial Bank.

HARRISON, NEBRASKA.

DIRECTORS.

C. F. COFFEY, President. F. W. CLARKE, Cashier CHAS. C. JAMESON. H. S. CLARKE, A. MCGINLEY

Stockmen having use for a bank at this point may rely on us to handle their entire Banking business.

We are prepared to take care of our trade at all times.

THE PIONEER PHARMACY.

Drugs, Druggist's Sundries, Paints, Oils, Varnishes, BOOKS and STATIONARY. J. E. PHINNEY, Proprietor.

FRANK TUTTO.

Cattle branded [Symbol] on the left side and same on [Symbol] left shoulder of horses. Also some of the Horses [Symbol] are branded on side and the ed for the above brand. Address, Harrison, Nebraska.

A. R. KENNEDY.

Cattle Branded [Symbol] on Right Hip shoulder. P. O. Address, Crawford, Nebraska.

JOB WORK

YES! THE PRESS-JOURNAL does Job Work. Neat, First Class and Up-To-Date.

Call in and get our prices on Business Cards, Note Heads, Letter Heads, Envelopes etc.

The Press-Journal.

We have made arrangements with the publishers of the Young People's Weekly one of the best periodicals of its class, so that we can furnish said paper in connection with the Press-Journal each one year for the small sum of \$1.25 for both papers or to those in arrears on subscription who will pay what they owe and 25 cents extra we will send the Young People's Weekly one year. Those who have paid in advance for the Press-Journal and want a first class paper for the young folks can come in on the deal also, by paying 25 cents extra.

The Young People's Weekly has reached its marvelous success and attained a circulation of over 210,000 copies a week because its contents interest young readers. Its popularity extends to thoughtful parents who recognize in it one of the best aids in keeping young folks in healthy touch with the active world giving them a taste for clean, vigorous reading, and presenting truths in their most attractive form.

NEIL JORDAN.

Horses and cattle branded on either side, same as on cut. And Cattle branded [Symbol] on left side, and Horses on left [Symbol] jaw. Address, Bodare, Nebraska.

BOURRET & SONS.

Cattle brand-ed same as that on cut on either side of animal. And following on [Symbol] [Symbol] [Symbol] left side of cattle. And this [Symbol] on left side of the stock. And this [Symbol] on left side and hip. Range on Running Water. Postoffice address, Harrison, Nebraska.

To Cure a Cold in One Day. Cures Croup in Two Days. Take Laxative Bromo Quinine Tablets. On every box, 25c. Seven Million boxes sold in past 12 months. This signature, E. W. Brown