

Registration Notice.

The supervisors of registration will meet for the purpose of a general registration of the voters in their respective wards in the city of Lincoln, on Tuesday, October 11, Wednesday, October 19, Thursday, October 27, Friday and Saturday, November 4 and 5, 1897, and shall remain in session on each of said days from the hours of 8 o'clock a. m. until 9 o'clock p. m. at the following places:

FIRST WARD.

Precinct 1 or A--City building.
Precinct 2 or B--1024 T street.
Precinct 3 or C--825 W street.

SECOND WARD.

Precinct 1 or A--Bohanan block.
Precinct 2 or B--Court house.
Precinct 3 or C--Holmes building, Eleventh street, between H and G streets.

THIRD WARD.

Precinct 1 or A--Grand Hotel.
Precinct 2 or B--Gaddis' shop, corner Thirteenth and Q streets.
Precinct 3 or C--1620 O street.
Precinct 4 or D--3011 O street.
Precinct 5 or E--Cox building, north side of U street, between Thirteenth and Fourteenth streets.

FOURTH WARD.

Precinct 1 or A--146 South Twelfth street.
Precinct 2 or B--308 South Eleventh street.
Precinct 3 or C--Oriental building, Thirteenth and K streets.
Precinct 4 or D--2115 O street.
Precinct 5 or E--Grocery store, corner Twentieth and J streets.

FIFTH WARD.

Precinct 1 or A--F street engine house.
Precinct 2 or B--J. R. Bing's shop.
Precinct 3 or C--Store room, corner South and Fourteenth streets.
Precinct 4 or D--Rippe's store.
Precinct 5 or E--445 D street.

SIXTH WARD.

Precinct 1 or A--S. M. Melick's barn, Twenty-fourth and O streets.
Precinct 2 or B--Corner V and Twenty-seventh streets.
Precinct 3 or C--Twenty-third and Washington streets.

SEVENTH WARD.

Precinct 1 or A--Mosley's building, corner Twelfth and Belmont avenue.
Precinct 2 or B--809 North Twenty-seventh street.
Precinct 3 or C--Byrum's store, Twenty-seventh street.

Section 1. The First ward is composed of that part of the city lying north of N street and west and south of the following boundaries: From N street running north on Eleventh street to R street; thence east on R to Twelfth street, thence north on Twelfth to Y street; thence west along said Y street to the limits of the city.

The First ward of the city shall constitute three (3) election precincts as follows:

Precinct one (1) or A shall include all that part of the First ward between the center of N street on the south, the center of Eleventh on the east, the center of R street on the north, and the city limits on the west.

Precinct two (2) or B shall include all that part of the First ward between the center of R street on the south, the center of Twelfth street on the east, the center of Y street on the north and the center of Ninth street on the west.

Precinct three (3) or C shall include all that part of the First ward between the center of R street on the south, the center of Ninth street on the east, the center of Y street on the north, and the city limits on the west.

The Second ward consists of all that part of the city west of Eleventh street between N and F streets.

The Second ward of this city shall constitute three election precincts as follows:

Precinct one (1) or A shall include all that part of the Second ward between the center of N street on the north, the center of Eleventh on the east, the center of L street on the south and on the west by the city limits.

Precinct two (2) or B shall include all that part of the Second ward between the center of L street on the north, the center of Eleventh street on the east, the center of H street on the south and on the west by the city limits.

Precinct three (3) or C shall include all that part of the Second ward between the center of H street on the north, the center of Eleventh street on the east, the center of F street on the south and on the west by the city limits.

Sec. 3. The Third ward consists of all that part of the city lying north of O street, east of the east boundary of the First ward and south of the center of the Missouri Pacific railroad, running west to West Lincoln and east to Twenty-second street, which shall be divided into five election precincts as follows:

The Third ward of this city shall constitute five (5) election precincts as follows:

Precinct one (1) or A shall include all that part of the Third ward between the center of R street, between Eleventh and Twelfth streets and the center of U street between Twelfth and Thirteenth streets on the north, the center of Thirteenth on the east, the center of O street on the south, and the center of Eleventh street between O and R streets and the center of Twelfth street between R and U streets on the west.

Precinct two (2) or B shall include all that part of the Third ward between the center of U street, between Thirteenth and Fourteenth streets, and the center of Vine street between Fourteenth and what would be the continuation of Fifteenth street on the north, the center of what would be the continuation of Fifteenth street on the east, the center of O street on the south, and the center of Thirteenth street on the west.

Precinct three (3) or C shall include all that part of the Third ward between the center of Vine street on the north, the center of Eighteenth street on the east, the center of O street on the south and the center of what would be the continuation of Fifteenth street on the west.

Precinct four (4) or D shall include all that part of the Third ward between the center of Vine street on the north, the center of Twenty-second street on the east, the center of O street on the south and the center of Eighteenth street on the west.

Precinct five (5) or E shall include all that portion of the Third ward north of the center of Vine street, between Twenty-second and Fourteenth streets, and the center of U street between Eleventh and Fourteenth streets, west of the center of Thirty-second street and east of the center of Twelfth street.

The Fourth ward consists of all that part of the city between O and F streets, north and south, and between Eleventh and Twenty-second streets,

east and west, and is divided into election precincts as follows:

The Fourth ward of the city shall constitute five (5) election districts as follows:

Precinct one (1) or A shall include all that part of the Fourth ward between the center of O street on the north, the center of Seventeenth street on the east, the center of N street on the south, and the center of Eleventh street on the west.

Precinct two (2) or B shall include all that part of the Fourth ward between the center of N street on the north, and the center of Sixteenth street on the east, and the center of L street on the south, and the center of Eleventh street on the west.

Precinct three (3) or C shall include all that part of the Fourth ward between the center of L street on the north, the center of Sixteenth street on the east, and the center of F street on the south and the center of Eleventh street on the west.

Precinct four (4) or D shall include all that part of the Fourth ward between the center of O street on the north, the center of Twenty-second street on the east, the center of L street on the south, the center of Sixteenth street from the center of L street to the center of N street, east thence on center of N street to the center of Seventeenth street, thence north on the center of Seventeenth street to the center of O street on the west.

Precinct five (5) or E shall include all that part of the Fourth ward between the center of L street on the north, the center of Twenty-second (22) street on the east; the center of F street on the south, the center of Sixteenth street on the west, north from the center of F to the center of L streets.

The Fifth ward consists of all that part of the city lying south of F street and west of Twenty-second street, and is divided into five election precincts as follows:

The Fifth ward of the city shall constitute five (5) election precincts as follows:

Precinct one (1) or A shall include all that part of the Fifth ward between the center of F street on the north, the center of Twenty-second street on the east, the center of C street on the south, and the center of Tenth street on the west.

Precinct two (2) or B shall include all that part of the Fifth ward between the center of C street on the north, the center of Twenty-second street on the east, the city limits on the south, and the center of Fifteenth, or what would be the continuation of Fifteenth street, on the west.

Precinct three (3) or C shall include all that part of the Fifth ward between the center of C street on the north, the center of Fifteenth street or what would be a continuation of Fifteenth street, on the east, the city limits on the south and the center of Tenth street on the west.

Precinct four (4) or D shall include all that part of the Fifth ward between the center of F street on the north, the center of Tenth street on the east, the city limits on the south and the center of Sixth street on the west.

Precinct five (5) or E shall include all that part of the Fifth ward south of the center of F street and west of the center of Sixth street.

The Sixth ward consists of all that part of the city lying east of Twenty-second street and south of Vine street. The west boundary of the Sixth ward is more particularly described as follows:

Beginning at Twenty-second street and Lake avenue, being the southwest corner of Park Hill addition, thence north along Twenty-second street to Sumner street, thence east to Twenty-second street in Pleasant Hill addition, thence north along Twenty-second street to D street, thence west to Twenty-second street in Houtz Place, thence north along Twenty-second street to Randolph street, thence north along the east line of Davenport's second addition, McMurtry's addition, Avondale addition and Spencer's addition to O street, thence west to Twenty-second street in Kinney's O street addition, thence north to R street, thence west to Twenty-second street in Lincoln Driving Park company's first sub-division thence south to Vine street.

The Sixth ward of this city shall constitute three (3) election precincts, as follows:

Precinct one (1) or A shall include all that part of the Sixth ward from the center of S street to the center of Randolph street.

Precinct two (2) or B shall include all that part of the Sixth ward from the center of Vine street to the center of S street.

Precinct three (3) or C shall include all that part of the Sixth ward from the center of Randolph street to the southern boundary of the ward.

The Seventh ward of the city consists of that part of the city lying north of the First, Third and Sixth wards, the south line of which is more particularly described as follows:

Commencing at Y street at the west line of the city limits, thence east on said Y street to Twelfth street, thence south on Twelfth street to center of Missouri Pacific railroad track, thence east to Twenty-second street, thence south to Vine street, thence east to city limits.

Except when otherwise provided the boundary lines of the wards extend to the center of the streets named in the ordinance, or where there is no street or any part of the boundary line mentioned, then such part of the boundary line extends in conformity to an extended line conforming to such center of street mentioned for boundary.

The Seventh ward of this city shall constitute three election precincts as follows:

Precinct one (1) or A shall include all that part of the Seventh ward north of the Burlington & Missouri River railroad and the center of Y street.

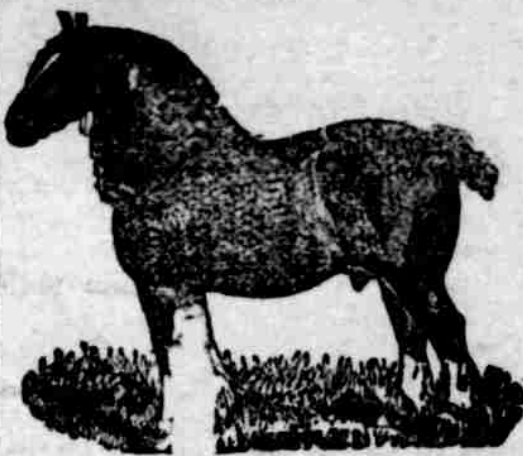
Precinct two (2) or B shall include all that part of the Seventh ward between the Burlington & Missouri railroad right-of-way on the north, the center of Twenty-seventh street on the east, the center of Vine street between Twenty-second and Twenty-seventh, and the center of X street between Twelfth and Twenty-second streets on the south, and the center of Twelfth street between X street and the right-of-way of the Burlington & Missouri River railroad on the west.

Precinct three (3) or C shall include all that portion of the Seventh ward south of the B. & M. right-of-way and east of Twenty-seventh street.

D. C. VAN DUYN, City Clerk.

An Elegant Souvenir.

"The Western Resort Book," a finely illustrated publication descriptive of all the western resorts along the line of the Union Pacific System. Sent free upon receipt of 6c in stamps. Address J. T. MASTIN, C. T. A., 1044 O St., E. B. SLOSSON, Gen. Agt., Lincoln, Neb.



Wm. Burgess
BLUE VALLEY
- STOCK FARM,
CRETE, NEB.

IMPORTER
ENGLISH SHIRE STALLIONS AND MARES.

To intending purchasers of this breed I can show them as good a lot of young stock from yearlings up, as there is in the west.

THOROUGHLY ACCLIMATED. LAST SHIPMENT 1890.

Their breeding is from the best strains of prize winning blood in England coupled with superior individual merit. My imported mares are superior any in the west; they are all safely in foal.

All My Stock Guaranteed, and All Recorded and Imported by Myself.

If you want Hackney Stallion, I have as good as was ever imported. Come and see what I have got, and if I cannot show you as good stock as any man, will pay you expenses. Prices as low as the lowest. 44-6m

CREST CITY FARM

L. BANKS WILSON.

Breeding and Importing Establishment, One Mile from Depo Creston, Iowa.

200 Full-Blooded Percheron, English Shire, English Hackney, Belgian French Coach, Cleveland Bays and Standard Bred Horses.



I have the largest assortment of European Breeds of any man in America; I handle none but recorded stock; I do not permit a mouthful of hot feed to be given; my horses are not pampered and are properly exercised, and fed cool food, which I think are the main reasons why my horses have always been successful breeders.

Come and visit my establishment.

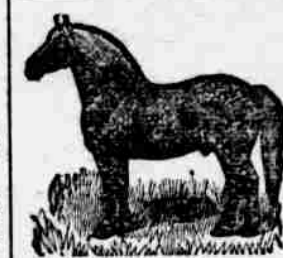
I am always glad to show my stock.

A FEW GOOD DRAFT MARES FOR SALE

When arriving at Creston visitors will please telephone to the Crest City Farm and I will drive in after them.

I am prepared to give long time to responsible parties.

Every horse guaranteed a breeder and must be as represented.



W. J. WROUGHTON & CO.,

Cambridge, Furnas County, Nebraska.

IMPORTERS OF

Shire, Clyde, Percheron, Belgian, German, and Oldenberg Coach, Coach, Yorkshire Coach, and Cleveland Bay Stallions.

We Handle More Horses Than Any Firm in Nebraska.

We import our own horses thus saving the customer the middle man's profit. Buyers have the advantage of comparing all breeds side by side at our stables.

We Have 40 Good Young Acclimated Horses on Hand.

Another importation of 40 will arrive about October 1. We guarantee all our horses every respect. We make farmers companies a specialty, having a system whereby we can organize companies and insure absolute success.

We Will Send a Man to Any Part of the State,

On application to assist in organizing companies. We give long time thus enabling purchasers to pay for horses from services. Correspondence promptly answered. Mention this paper. Address,

W. J. WROUGHTON & CO., Cambridge, Neb.

NOTICE.

To John Schamp Non-resident Defendant: You are hereby notified that on the 19 day of September 1897, Alice Schamp filed her petition against you in the district court of Lancaster County, Nebraska, the object and prayer of which are to obtain a divorce from you on the ground of wilful abandonment of plaintiff with out good cause for the term of two years last past.

You are requested to answer said petition on or before Monday the 7th day of November 1897. ALICE SCHAMP, Plaintiff.

By Barnes & Cummings, her attorneys.

GRANITE AND MARBLE MONUMENTS.

All Kinds of Cemetery Work.

KIMBALL & FRALICK
1629 O St. ; ; ; LINCOLN, NEB.

A CALL TO ACTION.

GEN. JAS. B. WEAVER

Has written under the above title

The Book of the Century.

The grandest reform book now in print. Every thinking voter should read it. Price, \$1.50. For sale at this office. 47tf

Send for our complete book list.

GUNS
DOUBLE Breech-Loader \$7.50
RIFLES \$2.00
WATCHES
BICYCLES \$15
All kinds cheaper than elsewhere. Before you buy, send stamp for catalogue to THE POWELL & CLEMENT CO., 106 Main St., Cincinnati, O.