

## THOSE APPROPRIATIONS

**Analysis of the Appropriations Made by the Legislature of 1891—Over \$100,000 Saved—Legislative Expenses Compared.**

**A List of Extraordinary Appropriations, What They Were Made for and Why—Republicans Challenged to Reply.**

In last fall's campaign, the republicans tried to make political capital by pointing to the appropriations made by the legislature. They were completely answered on this point but now they bob up with the same hypocritical cry. Perhaps it is because they have nothing better to offer.

They are horrified by the fact that the farmer legislature appropriated half a million more of the people's money than any previous legislature did! Let us look into this matter. The fact is that the appropriations exceeded those of any previous legislature about \$508,000. But of what did this consist? Did it consist of ordinary appropriations, or extraordinary ones, such as should not be taken into account in comparison? Let us see:

First. There are the \$200,000 appropriated for the relief of the western drouth sufferers. Certainly no patriotic citizen would be small and mean enough to say that should not have been appropriated, or that it was wasted. On the contrary it was one of the best investments the state ever made.

Second. We find \$50,000 for the world's fair. Certainly republicans should not "kick" on that, as they tried very hard to make it \$150,000 and are now demanding more from the next legislature.

Third. We discover \$40,000 for suppressing the Indian outbreak on our northern borders. Certainly no republican should criticize here. The outbreak was caused by the short-comings of the republican administration. The troops were ordered out by a republican governor, and commanded by a republican general.

Under the present system of republican rule, pauperism, insanity and crime are increasing more rapidly than they ever did before in this country. The reasons for this are the unjust distribution of wealth, and the consequent poverty, discouragement, and intemperance. This increase necessitated the appropriation of large sums to increase the capacity of our public institutions.

Fourth. There are \$100,000 to provide additional buildings and apparatus at the Hastings insane hospital; \$25,000 to construct additional buildings for the home of the feeble minded at Beatrice; \$50,000 to increase the capacity of the penitentiary; \$50,000 to build and support a reform school for girls at Geneva; \$15,000 for new buildings at Milford. Will any prominent republican risk his reputation by saying these appropriations should not have been made?

5th. There were \$11,000 paid for printing the governor's proclamation concerning the constitutional amendment. There was nothing of the kind four years ago, and besides every cent of it went to republican newspapers, and the Bee kicked hard because it didn't get more.

test expenses, which has no counterpart in the expenses of the previous legislature.

7th. \$56,000, were appropriated to pay the salaries of nine new district judges and their stenographers, a measure which the republicans strongly supported.

Now let's see where we are. By a little figuring we find that the appropriations named will amount to \$598,000 in round numbers. What then becomes of the half million? Here we have disposed of it and \$90,000 more. We have done this without saying a word about the \$50,000 appropriated to supply deficiencies caused, in the main, by republican wastefulness and mismanagement of our state institutions. \$28,000 of it went to supply the deficiency at the Hastings asylum where Dr. Test and Steward Liveringhouse made their record at boodling the state, and doing other things that wouldn't look well in print.

Will any good republicans rise up and tell us which one of these appropriations ought not to have been made? Will he point out the place where the lavish expenditure comes in? They may point to the contest expenses, but they do not amount to enough to affect the result.

In the above we make no mention of many minor appropriations that were extraordinary. By a fair comparison from the official records, omitting all extraordinary appropriations, we find that the FARMER LEGISLATURE APPROPRIATED LESS BY \$100,000 THAN THE LEGISLATURE OF 1888.

Now we want to ask all candid men to consider this: The population of the state increased twenty per cent in the two years of 1889 and '90. Is it not always true that public expenses tend to increase faster than population? This being true, if the appropriations of this legislature had been the same as those of the last, the present legislature would deserve credit for the REDUCTION OF OVER TWENTY PER CENT.

But this is not all. We want to impart to the dear people a secret, a very important fact which they should consider at all times. It is this: There was a demo-republican combine in the legislature of 1891. One of the things which that combine was especially bent on doing was to give the legislature a bad name in the matter of economy. They determined to make appropriations as lavish as they could. And they did. The records will show that the members of the combine voted almost solidly for every lavish appropriation that was proposed; that they opposed reductions, and favored increases: that they used all their power to swell the grand total. We challenge the republican party to dispute this by means of the record.

We defy any republican in Nebraska to show where the representatives of his party in that legislature ever made a fight for economy? If the appropriations were too large, why didn't they say so, and vote against them? They didn't do it. They wanted to make lavish expenditures, and they influenced every independent they could reach to vote for lavish expenditures. They had two objects in view.

1st. To injure the reputation of the new party.

2nd. To get as much money as possible appropriated so the republican officeholders of the state could have full swing at boodling the state for another term.

So much for the general appropri-

**WESTFALL COMMISSION CO.,** General Produce Merchants (legal representative hides and game. Free cold storage and special salesman for butter, eggs, cheese and poultry. Receivers and shippers of car lots of potatoes, apples, onions, hay and cabbage. Give us a share of your consignments. We get the highest market price and make prompt returns. Direct all communications and orders to.

461f **Westfall Com. Co., 423 Walnut St., Kansas City, Mo**

ALLEN ROOT, Stock Agent, Nebraska State Farmers' Alliance. Office and Financial M'gr.

GEO. S. BROWN, Salesman.

**SHIP YOUR OWN STOCK**  
**ALLEN ROOT AND COMPANY,**  
**LIVE STOCK COMMISSION MERCHANTS,**  
South Omaha, Neb., Room 34 Exchange Building.

Before You Ship Send for the Market.

REFERENCES: First National Bank of Omaha; Packers National Bank, Omaha; Commercial National Bank, Omaha; Nebraska Savings and Exchange Bank, Omaha; Central City Bank, Central City, Nebraska.

Shippers can draw sight draft on us for 90 per cent of cost, bill of lading attached.

**OBTAIN CHICAGO PRICES FOR ALL YOUR PRODUCE.**

**WOOL SHIP YOUR WOOL** Direct to us and receive all the value there is in it. Hundreds of Wool Growers have shipped us their wool in the past and will do so again this season. Why can't you? And they are entirely satisfied with the results. We are almost daily in receipt of letters from some of them ordering sacks for this season's shipment, and thanking us for the way we have handled their shipment. Write us for our Wool Circular. It gives the range of the market. Our terms for handling and other valuable information.

**SUMMERS, MORRISON & CO.,**  
**COMMISSION MERCHANTS, 175 South Water Street, Chicago.**  
Reference: Metropolitan National Bank, Chicago.



**W. J. WROUGHTON & CO.,**  
Cambridge, Furnas County, Nebraska.  
IMPORTERS OF  
Shire, Clyde, Percheron, Belgian,  
German, and Oldenberg Coach, French Coach,  
Yorkshire Coach, and Cleveland Bay Stallions.

**We Handle More Horses Than Any Firm in Nebraska.**

We import our own horses thus saving the customer the middle man's profit. Buyers have the advantage of comparing all breeds side by side at our stables.

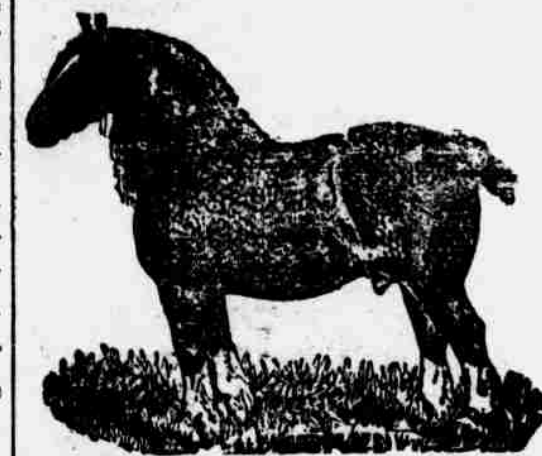
**We Have 40 Good Young Acclimated Horses on Hand.**

Another importation of 40 will arrive about October 1. We guarantee all our horses in every respect. We make farmers companies a specialty, having a system whereby we can organize companies and insure absolute success.

**We Will Send a Man to Any Part of the State,**

On application to assist in organizing companies. We give long time thus enabling purchasers to pay for horses from services. Correspondence promptly answered. Mention this paper. Address,

**W. J. WROUGHTON & CO., Cambridge, Neb.**



**Wm. Burgess**  
**BLUE VALLEY -**  
**- STOCK FARM,**  
**CRETE, NEB.**

**IMPORTER**

**English Shire Stallions and Mares**

To intending purchasers of this breed I can show them as good a lot of young stock from yearlings up, as there is in the west.

**THOROUGHLY ACCLIMATED. LAST SHIPMENT 1890.**

Their breeding is from the best strains of prize winning blood in England coupled with superior individual merit. My imported mares are superior to any in the west; they are all safely in foal.

**All My Stock Guaranteed, and All Recorded and Imported by Myself.**

If you want a Hackney Stallion, I have as good as was ever imported.