

LOCAL NEWS.

Dr. W. B. Elster, Dentist, Waterman Block.

Anything you want? Get it at Gering's.

Don't forget: Keedy takes photos for \$1.25

Balky watches made to work by McElwain, the jeweler.

When you want a good comb, come to Gering & Co.

Keedy's studio is the only one in Plattsmouth turning out the new finish platinum water color photos.

We guarantee a fit in spectacles or no sale, at Gering & Co.'s

H. G. Van Horn of the Cedar Creek neighborhood was a Plattsmouth visitor one day this week.

We call for and repair all kinds of furniture. Call us up. Our telephone is 137. Sattler Furniture Co.

The sweetest of sweets in the candy line at Gering & Co.'s

For sale or exchange for eastern Nebraska lands, 25 ranches; all sizes.

R. B. WINDHAM,

Plattsmouth, Neb.

John Becker is building an addition to his brother's tenant house, occupied by Henry Hayflicker, near Eight Mile Grove.

We have a few wall paper remnants that we sell for 2c per roll. They are just the thing for closets and pantries. Call and see us. GERING & CO.

Low Brothers high standard liquid paints cover 300 square feet two coats cheaper and better than lead and oil, Gering & Co., selling agents.

Mrs. E. E. Goodwin drove into the city Thursday to pay her old friends a social call, and returning drove out to Mynard to look after her crops.

Prescriptions are always filled correctly at Gering & Co.'s.

When you get warmed up nicely, just call up Platts. Tel. 72-73, Neb. 72, and get block of COLD ICE—just the thing.

Our Baby Cough Syrup is just the thing for children under five years—only 25c a bottle. Gering & Co.

You are looking for a Phoenix & Northern fire policy. A. W. White will write it. He is sole agent for Cass county.

If there's a place in town where ladies feel satisfied that the style and assortment of spring hats is all they can ask, it's at Mrs. Manspecker's.

When it comes to real fine perfumes, Gering & Co. keep them all.

Don't forget that Ptak & Bajcek are manufacturers of several lines of fine cigars, which have just been put upon the market. Try them for a fine, sweet smoke.

When the weather is hot drop into Keedy's studio and examine his exhibit of platinum water colored photographs. They are fine.

Gering & Co.'s Syrup of Trifolium Compound is the greatest spring blood purifier sold, and is absolutely guaranteed to give satisfaction or money refunded. Price \$1.

The Ebinger Hardware company is sole local agent for the Peerless cream separator, the best in the market for quick and thorough work. Examine the apparatus at the store, Main street, Plattsmouth.

The platinum water color photos so closely resemble a miniature portrait in water colors that it is almost impossible to denote the difference. This work can only be secured at Keedy's studio on Main street.

Hez Peck is employed cleaning and renewing the appearance of tombstones in Oak Hill cemetery, for a consideration. His charges are light and work guaranteed. Neb. Tel. 89.

Save ice and money by buying the world famous Challenge Iceberg Refrigerators. There are others, but none equal to this one sold and warranted by the Sattler Furniture Co.—the big store on 6th street.

The Ebinger Hardware company has just received a large shipment of the celebrated haying tools. Any farmer who has ever used these implements or seen them work will be satisfied with no other. If they are new to you, step in and examine them at the Ebinger store.

Cold stuff for warm weather. The fine, clear blocks of ice you can get from McMaken, the ice man. Buy a book, and save money on your ice bills.

Call at any drug store and get a free sample of Chamberlain's Stomach and Liver Tablets. They are an excellent physic. They also improve the appetite, strengthen the digestion and regulate the liver and bowels. They are easy to take and pleasant in effect.

If there is one store in Plattsmouth that makes you want to buy everything they have it's that of the Sattler Furniture Co.—the big store on Sixth street.

The band boys went to Palmyra to play for the old settlers' picnic Wednesday night. They were a fine looking lot of fellows, togged out in their new uniforms, which fit them as neatly as a job of Teddy Clifford's wallpaper-

ing. Friday night at Main and Fifth streets the boys will give the second of their open air concerts, when all may come out to see the music and listen to the new uniforms.

Get your photos taken at Keedy's studio and get a chance on a 20x30 portrait painted in oil. We paint the picture from life or photo. Also one platinum water color panel with each dozen cabinet photos.

August Stander from out near Louisville was a Plattsmouth visitor and a welcome caller at the Journal office Saturday.

Every young man in town would be hunting up a license and a minister if he knew how beautifully and inexpensively the Sattler Furniture Co. can furnish a home for him.

It is expected that all the Sunday schools of this city will send delegates to the Nebraska State Sunday School convention, to be held at Hastings, June 18, to 20 inclusive. The railroads have announced a rate of a fare and a third, and all delegates will be entertained at the homes of Hastings citizens. Noted speakers will be present, and excellent programs have been prepared for the various sessions.

Elegant? Well, I should say! That's what every one says of the line of baby carriages, go-carts and sleepers at the Sattler Furniture Co.'s big store on Sixth street.

Waverly T. Allen of Ashland, recently taken before the insanity board and adjudged insane, is a well known old-time resident of Cass county. He was a miller by trade and once ran a mill at Louisville. Later he moved to Saunders county, where he acquired a considerable property, including a mill on the Wahoo, but through the manipulation of a biped shark it was lost to him, and the constant worry over his fruitless efforts to recover it, seems to have unsettled his mind.

Charles S. Sherman, city editor of the Lincoln Evening News, and press correspondent for a number of big eastern papers, came to Plattsmouth Saturday night with his wife to help his father, Colonel Charles W. Sherman, celebrate his sixtieth birthday. Hard work and close application has so blanched "young" Charlie's erstwhile raven locks that the colonel might well pass for the more juvenile of the two.

Wednesday night at the German Turner hall the society celebrated the 70th anniversary of the three oldest members of the social society, Messrs. Paul Gering, George P. Horn and Nick Halmes. The invited guests were royally entertained, while Messrs. Ebinger, Koch, Droege, Ottat and Carl Kunsman furnished a very pleasing musical program.

The daughter of Rev. George Betts, with her little daughter, is visiting her aunt, Mrs. Walter White.

Reduced rates to Omaha on account of the musical festival during June. Every Saturday and Sunday during the month 75c for the round trip. Tickets limited to the Monday following date of sale.

W. L. PICKETT, Agent.

List of Letters

Remaining uncalled for in the post-office at Plattsmouth for the week ending June 8, 1901:

Mrs. Carrage, ne Lan-John Bark, Miss Harlie Yates.
 Alanie L. Tugid, Claude Elm.
 Lars Es. Lof, Fred G. Miller.
 Art Zeal, G. W. Rand.
 W. H. Russell, Edw. D. Stanley.
 J. L. Smith, Edwin A. Sprague.
 H. D. Seaver, Geo. Wolf.

Persons calling for these letters will please say "advertised."
 C. H. SMITH, P. M.

Big Bonus for Serum.

It is reported that the Mexican government contemplates an award of \$100,000 to Dr. Angel Bellinzaghi for his serum against yellow fever, which is said to have been successful in 85 per cent of the cases in Mexican hospitals.

BURLINGTON ROUTE EXCURSION RATE TO EASTERN CITIES FROM PLATTSMOUTH.

These rates will interest you. They are as low as will be in effect at any time this summer.

Detroit—July 5, 6 and 7, \$22.00 for the round trip.
 Cincinnati—July 4, 5 and 6, \$22.50 to Cincinnati and return.
 Milwaukee—July 20, 21 and 22, \$16.75 for the round trip.
 Chicago—July 23, 24 and 25, \$14.75 for the round trip.

Low rates daily to the Pan-American Exposition at Buffalo. Ask the ticket agent about them.

J. FRANCIS, Gen. Pass. Agt., Omaha, Neb.

Photos at Keedy's \$1.25 and up.

With each dozen of our photos, until July 1st, we give one platinum water color panel. This offer is made only as a means of introducing the new finish in platinum water colors. Keedy studio.

How to Avoid Trouble.

Now is the time to provide yourself and family a bottle of Chamberlain's colic, cholera and diarrhoea remedy. It is certain to be needed before summer is over, and if procured now may save a trip to town in the night or in the busiest season. It is everywhere admitted to be the most successful medicine in use for bowel complaints, both for children and adults. No family can afford to be without it. For sale by all druggists.

WM. HEROLD & SON. E. G. DOVEY & SON.

Special Sale on Lawns.

We are showing a good Dimity at 5c. A fine Batiste at 8c. Choice Dimities at 10c.

Special Sale on Rugs.

We have about 10 dozen Rugs, 13 yards long, made from remnants of best carpets, such as Velvet Brussels, Moquettes and Axminsters. Your choice for \$1.25 each.

Don't forget we are headquarters for everything in the Carpet line.

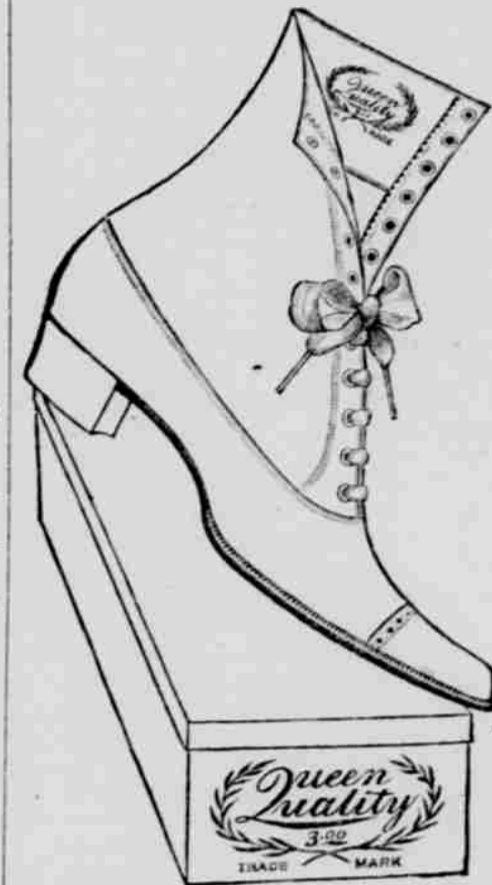
We are agents in Plattsmouth for



Shoes. Smart, stylish street boots for dressy women, from the dainty Kibo patent Kid to the heavy welted sole.

All one price—

\$3.00.



Gage Down Corsets, all styles. We are showing the new straight front summer Corset for 50c.

E. G. DOVEY and SON.

Sheriff's Sale.

By virtue of an order of sale issued by George F. Houseworth, clerk of the district court within and for Cass County, Nebraska, and to me directed, I will on the

18th Day of July, A. D. 1901.

at 2 o'clock, p. m., of said day, at the south door of the court house in the city of Plattsmouth, in said county, sell at public auction, to the highest bidder for cash, the following real estate, to-wit: Fractional lot three (3) town ten (10) north, of range eleven (11).

WALNUT HILL ADDITION.
 Lot one in block one, lot two in block one, lot three in block one, lot four in block one, east half of lot five in block one, west half of lot five in block one, east half of lot six in block one, west half of lot six in block one, lot seven in block one, lot eight in block one, lot nine in block one, lot ten in block one, lot eleven in block one, lot twelve in block one, lot thirteen in block one, lot fourteen in block one, lot fifteen in block one, lot sixteen in block one, lot seventeen in block one, lot eighteen in block one, lot nineteen in block one, lot twenty in block one, lot twenty one in block one, lot twenty two in block one, lot twenty three in block one, lot twenty four in block one, lot twenty five in block one, lot twenty six in block one, lot twenty seven in block one, lot twenty eight in block one, lot twenty nine in block one, lot thirty in block one, lot thirty one in block one, lot thirty two in block one, lot thirty three in block one, lot thirty four in block one, lot thirty five in block one, lot thirty six in block one, lot thirty seven in block one, lot thirty eight in block one, lot thirty nine in block one, lot forty in block one, lot forty one in block one, lot forty two in block one, lot forty three in block one, lot forty four in block one, lot forty five in block one, lot forty six in block one, lot forty seven in block one, lot forty eight in block one, lot forty nine in block one, lot fifty in block one, lot fifty one in block one, lot fifty two in block one, lot fifty three in block one, lot fifty four in block one, lot fifty five in block one, lot fifty six in block one, lot fifty seven in block one, lot fifty eight in block one, lot fifty nine in block one, lot sixty in block one, lot sixty one in block one, lot sixty two in block one, lot sixty three in block one, lot sixty four in block one, lot sixty five in block one, lot sixty six in block one, lot sixty seven in block one, lot sixty eight in block one, lot sixty nine in block one, lot seventy in block one, lot seventy one in block one, lot seventy two in block one, lot seventy three in block one, lot seventy four in block one, lot seventy five in block one, lot seventy six in block one, lot seventy seven in block one, lot seventy eight in block one, lot seventy nine in block one, lot eighty in block one, lot eighty one in block one, lot eighty two in block one, lot eighty three in block one, lot eighty four in block one, lot eighty five in block one, lot eighty six in block one, lot eighty seven in block one, lot eighty eight in block one, lot eighty nine in block one, lot ninety in block one, lot ninety one in block one, lot ninety two in block one, lot ninety three in block one, lot ninety four in block one, lot ninety five in block one, lot ninety six in block one, lot ninety seven in block one, lot ninety eight in block one, lot ninety nine in block one, lot one hundred in block one.

REVERSE SIDE ADDITION.
 Sub-lot one in block six, sub-lot A2 in block six, sub-lot B2 and C2 in block six, sub-lot D2 in block six, sub-lot E2 in block six, sub-lot F2 in block six, sub-lot G2 in block six, sub-lot H2 in block six, sub-lot I2 in block six, sub-lot J2 in block six, sub-lot K2 in block six, sub-lot L2 in block six, sub-lot M2 in block six, sub-lot N2 in block six, sub-lot O2 in block six, sub-lot P2 in block six, sub-lot Q2 in block six, sub-lot R2 in block six, sub-lot S2 in block six, sub-lot T2 in block six, sub-lot U2 in block six, sub-lot V2 in block six, sub-lot W2 in block six, sub-lot X2 in block six, sub-lot Y2 in block six, sub-lot Z2 in block six, sub-lot AA2 in block six, sub-lot AB2 in block six, sub-lot AC2 in block six, sub-lot AD2 in block six, sub-lot AE2 in block six, sub-lot AF2 in block six, sub-lot AG2 in block six, sub-lot AH2 in block six, sub-lot AI2 in block six, sub-lot AJ2 in block six, sub-lot AK2 in block six, sub-lot AL2 in block six, sub-lot AM2 in block six, sub-lot AN2 in block six, sub-lot AO2 in block six, sub-lot AP2 in block six, sub-lot AQ2 in block six, sub-lot AR2 in block six, sub-lot AS2 in block six, sub-lot AT2 in block six, sub-lot AU2 in block six, sub-lot AV2 in block six, sub-lot AW2 in block six, sub-lot AX2 in block six, sub-lot AY2 in block six, sub-lot AZ2 in block six, sub-lot BA2 in block six, sub-lot BB2 in block six, sub-lot BC2 in block six, sub-lot BD2 in block six, sub-lot BE2 in block six, sub-lot BF2 in block six, sub-lot BG2 in block six, sub-lot BH2 in block six, sub-lot BI2 in block six, sub-lot BJ2 in block six, sub-lot BK2 in block six, sub-lot BL2 in block six, sub-lot BM2 in block six, sub-lot BN2 in block six, sub-lot BO2 in block six, sub-lot BP2 in block six, sub-lot BQ2 in block six, sub-lot BR2 in block six, sub-lot BS2 in block six, sub-lot BT2 in block six, sub-lot BU2 in block six, sub-lot BV2 in block six, sub-lot BW2 in block six, sub-lot BX2 in block six, sub-lot BY2 in block six, sub-lot BZ2 in block six, sub-lot CA2 in block six, sub-lot CB2 in block six, sub-lot CC2 in block six, sub-lot CD2 in block six, sub-lot CE2 in block six, sub-lot CF2 in block six, sub-lot CG2 in block six, sub-lot CH2 in block six, sub-lot CI2 in block six, sub-lot CJ2 in block six, sub-lot CK2 in block six, sub-lot CL2 in block six, sub-lot CM2 in block six, sub-lot CN2 in block six, sub-lot CO2 in block six, sub-lot CP2 in block six, sub-lot CQ2 in block six, sub-lot CR2 in block six, sub-lot CS2 in block six, sub-lot CT2 in block six, sub-lot CU2 in block six, sub-lot CV2 in block six, sub-lot CW2 in block six, sub-lot CX2 in block six, sub-lot CY2 in block six, sub-lot CZ2 in block six, sub-lot DA2 in block six, sub-lot DB2 in block six, sub-lot DC2 in block six, sub-lot DD2 in block six, sub-lot DE2 in block six, sub-lot DF2 in block six, sub-lot DG2 in block six, sub-lot DH2 in block six, sub-lot DI2 in block six, sub-lot DJ2 in block six, sub-lot DK2 in block six, sub-lot DL2 in block six, sub-lot DM2 in block six, sub-lot DN2 in block six, sub-lot DO2 in block six, sub-lot DP2 in block six, sub-lot DQ2 in block six, sub-lot DR2 in block six, sub-lot DS2 in block six, sub-lot DT2 in block six, sub-lot DU2 in block six, sub-lot DV2 in block six, sub-lot DW2 in block six, sub-lot DX2 in block six, sub-lot DY2 in block six, sub-lot DZ2 in block six, sub-lot EA2 in block six, sub-lot EB2 in block six, sub-lot EC2 in block six, sub-lot ED2 in block six, sub-lot EE2 in block six, sub-lot EF2 in block six, sub-lot EG2 in block six, sub-lot EH2 in block six, sub-lot EI2 in block six, sub-lot EJ2 in block six, sub-lot EK2 in block six, sub-lot EL2 in block six, sub-lot EM2 in block six, sub-lot EN2 in block six, sub-lot EO2 in block six, sub-lot EP2 in block six, sub-lot EQ2 in block six, sub-lot ER2 in block six, sub-lot ES2 in block six, sub-lot ET2 in block six, sub-lot EU2 in block six, sub-lot EV2 in block six, sub-lot EW2 in block six, sub-lot EX2 in block six, sub-lot EY2 in block six, sub-lot EZ2 in block six, sub-lot FA2 in block six, sub-lot FB2 in block six, sub-lot FC2 in block six, sub-lot FD2 in block six, sub-lot FE2 in block six, sub-lot FF2 in block six, sub-lot FG2 in block six, sub-lot FH2 in block six, sub-lot FI2 in block six, sub-lot FJ2 in block six, sub-lot FK2 in block six, sub-lot FL2 in block six, sub-lot FM2 in block six, sub-lot FN2 in block six, sub-lot FO2 in block six, sub-lot FP2 in block six, sub-lot FQ2 in block six, sub-lot FR2 in block six, sub-lot FS2 in block six, sub-lot FT2 in block six, sub-lot FU2 in block six, sub-lot FV2 in block six, sub-lot FW2 in block six, sub-lot FX2 in block six, sub-lot FY2 in block six, sub-lot FZ2 in block six, sub-lot GA2 in block six, sub-lot GB2 in block six, sub-lot GC2 in block six, sub-lot GD2 in block six, sub-lot GE2 in block six, sub-lot GF2 in block six, sub-lot GG2 in block six, sub-lot GH2 in block six, sub-lot GI2 in block six, sub-lot GJ2 in block six, sub-lot GK2 in block six, sub-lot GL2 in block six, sub-lot GM2 in block six, sub-lot GN2 in block six, sub-lot GO2 in block six, sub-lot GP2 in block six, sub-lot GQ2 in block six, sub-lot GR2 in block six, sub-lot GS2 in block six, sub-lot GT2 in block six, sub-lot GU2 in block six, sub-lot GV2 in block six, sub-lot GW2 in block six, sub-lot GX2 in block six, sub-lot GY2 in block six, sub-lot GZ2 in block six, sub-lot HA2 in block six, sub-lot HB2 in block six, sub-lot HC2 in block six, sub-lot HD2 in block six, sub-lot HE2 in block six, sub-lot HF2 in block six, sub-lot HG2 in block six, sub-lot HH2 in block six, sub-lot HI2 in block six, sub-lot HJ2 in block six, sub-lot HK2 in block six, sub-lot HL2 in block six, sub-lot HM2 in block six, sub-lot HN2 in block six, sub-lot HO2 in block six, sub-lot HP2 in block six, sub-lot HQ2 in block six, sub-lot HR2 in block six, sub-lot HS2 in block six, sub-lot HT2 in block six, sub-lot HU2 in block six, sub-lot HV2 in block six, sub-lot HW2 in block six, sub-lot HX2 in block six, sub-lot HY2 in block six, sub-lot HZ2 in block six, sub-lot IA2 in block six, sub-lot IB2 in block six, sub-lot IC2 in block six, sub-lot ID2 in block six, sub-lot IE2 in block six, sub-lot IF2 in block six, sub-lot IG2 in block six, sub-lot IH2 in block six, sub-lot II2 in block six, sub-lot IJ2 in block six, sub-lot IK2 in block six, sub-lot IL2 in block six, sub-lot IM2 in block six, sub-lot IN2 in block six, sub-lot IO2 in block six, sub-lot IP2 in block six, sub-lot IQ2 in block six, sub-lot IR2 in block six, sub-lot IS2 in block six, sub-lot IT2 in block six, sub-lot IU2 in block six, sub-lot IV2 in block six, sub-lot IW2 in block six, sub-lot IX2 in block six, sub-lot IY2 in block six, sub-lot IZ2 in block six, sub-lot JA2 in block six, sub-lot JB2 in block six, sub-lot JC2 in block six, sub-lot JD2 in block six, sub-lot JE2 in block six, sub-lot JF2 in block six, sub-lot JG2 in block six, sub-lot JH2 in block six, sub-lot JI2 in block six, sub-lot JJ2 in block six, sub-lot JK2 in block six, sub-lot JL2 in block six, sub-lot JM2 in block six, sub-lot JN2 in block six, sub-lot JO2 in block six, sub-lot JP2 in block six, sub-lot JQ2 in block six, sub-lot JR2 in block six, sub-lot JS2 in block six, sub-lot JT2 in block six, sub-lot JU2 in block six, sub-lot JV2 in block six, sub-lot JW2 in block six, sub-lot JX2 in block six, sub-lot JY2 in block six, sub-lot JZ2 in block six, sub-lot KA2 in block six, sub-lot KB2 in block six, sub-lot KC2 in block six, sub-lot KD2 in block six, sub-lot KE2 in block six, sub-lot KF2 in block six, sub-lot KG2 in block six, sub-lot KH2 in block six, sub-lot KI2 in block six, sub-lot KJ2 in block six, sub-lot KK2 in block six, sub-lot KL2 in block six, sub-lot KM2 in block six, sub-lot KN2 in block six, sub-lot KO2 in block six, sub-lot KP2 in block six, sub-lot KQ2 in block six, sub-lot KR2 in block six, sub-lot KS2 in block six, sub-lot KT2 in block six, sub-lot KU2 in block six, sub-lot KV2 in block six, sub-lot KW2 in block six, sub-lot KX2 in block six, sub-lot KY2 in block six, sub-lot KZ2 in block six, sub-lot LA2 in block six, sub-lot LB2 in block six, sub-lot LC2 in block six, sub-lot LD2 in block six, sub-lot LE2 in block six, sub-lot LF2 in block six, sub-lot LG2 in block six, sub-lot LH2 in block six, sub-lot LI2 in block six, sub-lot LJ2 in block six, sub-lot LK2 in block six, sub-lot LL2 in block six, sub-lot LM2 in block six, sub-lot LN2 in block six, sub-lot LO2 in block six, sub-lot LP2 in block six, sub-lot LQ2 in block six, sub-lot LR2 in block six, sub-lot LS2 in block six, sub-lot LT2 in block six, sub-lot LU2 in block six, sub-lot LV2 in block six, sub-lot LW2 in block six, sub-lot LX2 in block six, sub-lot LY2 in block six, sub-lot LZ2 in block six, sub-lot MA2 in block six, sub-lot MB2 in block six, sub-lot MC2 in block six, sub-lot MD2 in block six, sub-lot ME2 in block six, sub-lot MF2 in block six, sub-lot MG2 in block six, sub-lot MH2 in block six, sub-lot MI2 in block six, sub-lot MJ2 in block six, sub-lot MK2 in block six, sub-lot ML2 in block six, sub-lot MM2 in block six, sub-lot MN2 in block six, sub-lot MO2 in block six, sub-lot MP2 in block six, sub-lot MQ2 in block six, sub-lot MR2 in block six, sub-lot MS2 in block six, sub-lot MT2 in block six, sub-lot MU2 in block six, sub-lot MV2 in block six, sub-lot MW2 in block six, sub-lot MX2 in block six, sub-lot MY2 in block six, sub-lot MZ2 in block six, sub-lot NA2 in block six, sub-lot NB2 in block six, sub-lot NC2 in block six, sub-lot ND2 in block six, sub-lot NE2 in block six, sub-lot NF2 in block six, sub-lot NG2 in block six, sub-lot NH2 in block six, sub-lot NI2 in block six, sub-lot NJ2 in block six, sub-lot NK2 in block six, sub-lot NL2 in block six, sub-lot NM2 in block six, sub-lot NN2 in block six, sub-lot NO2 in block six, sub-lot NP2 in block six, sub-lot NQ2 in block six, sub-lot NR2 in block six, sub-lot NS2 in block six, sub-lot NT2 in block six, sub-lot NU2 in block six, sub-lot NV2 in block six, sub-lot NW2 in block six, sub-lot NX2 in block six, sub-lot NY2 in block six, sub-lot NZ2 in block six, sub-lot OA2 in block six, sub-lot OB2 in block six, sub-lot OC2 in block six, sub-lot OD2 in block six, sub-lot OE2 in block six, sub-lot OF2 in block six, sub-lot OG2 in block six, sub-lot OH2 in block six, sub-lot OI2 in block six, sub-lot OJ2 in block six, sub-lot OK2 in block six, sub-lot OL2 in block six, sub-lot OM2 in block six, sub-lot ON2 in block six, sub-lot OO2 in block six, sub-lot OP2 in block six, sub-lot OQ2 in block six, sub-lot OR2 in block six, sub-lot OS2 in block six, sub-lot OT2 in block six, sub-lot OU2 in block six, sub-lot OV2 in block six, sub-lot OW2 in block six, sub-lot OX2 in block six, sub-lot OY2 in block six, sub-lot OZ2 in block six, sub-lot PA2 in block six, sub-lot PB2 in block six, sub-lot PC2 in block six, sub-lot PD2 in block six, sub-lot PE2 in block six, sub-lot PF2 in block six, sub-lot PG2 in block six, sub-lot PH2 in block six, sub-lot PI2 in block six, sub-lot PJ2 in block six, sub-lot PK2 in block six, sub-lot PL2 in block six, sub-lot PM2 in block six, sub-lot PN2 in block six, sub-lot PO2 in block six, sub-lot PP2 in block six, sub-lot PQ2 in block six, sub-lot PR2 in block six, sub-lot PS2 in block six, sub-lot PT2 in block six, sub-lot PU2 in block six, sub-lot PV2 in block six, sub-lot PW2 in block six, sub-lot PX2 in block six, sub-lot PY2 in block six, sub-lot PZ2 in block six, sub-lot QA2 in block six, sub-lot QB2 in block six, sub-lot QC2 in block six, sub-lot QD2 in block six, sub-lot QE2 in block six, sub-lot QF2 in block six, sub-lot QG2 in block six, sub-lot QH2 in block six, sub-lot QI2 in block six, sub-lot QJ2 in block six, sub-lot QK2 in block six, sub-lot QL2 in block six, sub-lot QM2 in block six, sub-lot QN2 in block six, sub-lot QO2 in block six, sub-lot QP2 in block six, sub-lot QQ2 in block six, sub-lot QR2 in block six, sub-lot QS2 in block six, sub-lot QT2 in block six, sub-lot QU2 in block six, sub-lot QV2 in block six, sub-lot QW2 in block six, sub-lot QX2 in block six, sub-lot QY2 in block six, sub-lot QZ2 in block six, sub-lot RA2 in block six, sub-lot RB2 in block six, sub-lot RC2 in block six, sub-lot RD2 in block six, sub-lot RE2 in block six, sub-lot RF2 in block six, sub-lot RG2 in block six, sub-lot RH2 in block six, sub-lot RI2 in block six, sub-lot RJ2 in block six, sub-lot RK2 in block six, sub-lot RL2 in block six, sub-lot RM2 in block six, sub-lot RN2 in block six, sub-lot RO2 in block six, sub-lot RP2 in block six, sub-lot RQ2 in block six, sub-lot RR2 in block six, sub-lot RS2 in block six, sub-lot RT2 in block six, sub-lot RU2 in block six, sub-lot RV2 in block six, sub-lot RW2 in block six, sub-lot RX2 in block six, sub-lot RY2 in block six, sub-lot RZ2 in block six, sub-lot SA2 in block six, sub-lot SB2 in block six, sub-lot SC2 in block six, sub-lot SD2 in block six, sub-lot SE2 in block six, sub-lot SF2 in block six, sub-lot SG2 in block six, sub-lot SH2 in block six, sub-lot SI2 in block six, sub-lot SJ2 in block six, sub-lot SK2 in block six, sub-lot SL2 in block six, sub-lot SM2 in block six, sub-lot SN2 in block six, sub-lot SO2 in block six, sub-lot SP2 in block six, sub-lot SQ2 in block six, sub-lot SR2 in block six, sub-lot SS2 in block six, sub-lot ST2 in block six, sub-lot SU2 in block six, sub-lot SV2 in block six, sub-lot SW2 in block six, sub-lot SX2 in block six, sub-lot SY2 in block six, sub-lot SZ2 in block six, sub-lot TA2 in block six, sub-lot TB2 in block six, sub-lot TC2 in block six, sub-lot TD2 in block six, sub-lot TE2 in block six, sub-lot TF2 in block six, sub-lot TG2 in block six, sub-lot TH2 in block six, sub-lot TI2 in block six, sub-lot TJ2 in block six, sub-lot TK2 in block six, sub-lot TL2 in block six, sub-lot TM2 in block six, sub-lot TN2 in block six, sub-lot TO2 in block six, sub-lot TP2 in block six, sub-lot TQ2 in block six, sub-lot TR2 in block six, sub-lot TS2 in block six, sub-lot TT2 in block six, sub-lot TU2 in block six, sub-lot TV2 in block six, sub-lot TW2 in block six, sub-lot TX2 in block six, sub-lot TY2 in block six, sub-lot TZ2 in block six, sub-lot UA2 in block six, sub-lot UB2 in block six, sub-lot UC2 in block six, sub-lot UD2 in block six, sub-lot UE2 in block six, sub-lot UF2 in block six, sub-lot UG2 in block six, sub-lot UH2 in block six, sub-lot UI2 in block six, sub-lot UJ2 in block six, sub-lot UK2 in block six, sub-lot UL2 in block six, sub-lot UM2 in block six, sub-lot UN2 in block six, sub-lot UO2 in block six, sub-lot UP2 in block six, sub-lot UQ2 in block six, sub-lot UR2 in block six, sub-lot US2 in block six, sub-lot UT2 in block six, sub-lot UV2 in block six, sub-lot UW2 in block six, sub-lot UX2 in block six, sub-lot UY2 in block six, sub-lot UZ2 in block six, sub-lot VA2 in block six, sub-lot VB2 in block six, sub-lot VC2 in block six, sub-lot VD2 in block six, sub-lot VE2 in block six, sub-lot VF2 in block six, sub-lot VG2 in block six, sub-lot VH2 in block six, sub-lot VI2 in block six, sub-lot VJ2 in block six, sub-lot VK2 in block six, sub-lot VL2 in block six, sub-lot VM2 in block six, sub-lot VN2 in block six, sub-lot VO2 in block six, sub-lot VP2 in block six, sub-lot VQ2 in block six, sub-lot VR2 in block six, sub-lot VS2 in block six, sub-lot VT2 in block six, sub-lot VU2 in block six, sub-lot VV2 in block six, sub-lot VW2 in block six, sub-lot VX2 in block six, sub-lot VY2 in block six, sub-lot VZ2 in block six, sub-lot WA2 in block six, sub-lot WB2 in block six, sub-lot WC2 in block six, sub-lot WD2 in block six, sub-lot WE2 in block six, sub-lot WF2 in block six, sub-lot WG2 in block six, sub-lot WH2 in block six, sub-lot WI2 in block six, sub-lot WJ2 in block six, sub-lot WK2 in block six, sub-lot WL2 in block six, sub-lot WM2 in block six, sub-lot WN2 in block six, sub-lot WO2 in block six, sub-lot WP2 in block six, sub-lot WQ2 in block six, sub-lot WR2 in block six, sub-lot WS2 in block six, sub-lot WT2 in block six, sub-lot WU2 in block six, sub-lot WV2 in block six, sub-lot WW2 in block six, sub-lot WX2 in block six, sub-lot WY2 in block six, sub-lot WZ2 in block six, sub-lot XA2 in block six, sub-lot XB2 in block six, sub-lot XC2 in block six, sub-lot XD2 in block six, sub-lot XE2 in block six, sub-lot XF2 in block six, sub-lot XG2 in block six, sub-lot XH2 in block six, sub-lot XI2 in block six, sub-lot XJ2 in block six, sub-lot XK2 in block six, sub-lot XL2 in block six, sub-lot XM2 in block six, sub-lot XN2 in block six, sub-lot XO2 in block six, sub-lot XP2 in block six, sub-lot XQ2 in block six, sub-lot XR2 in block six, sub-lot XS2 in block six, sub-lot XT2 in block six, sub-lot XU2 in block six, sub-lot XV2 in block six, sub-lot XW2 in block six, sub-lot XX2 in block six, sub-lot XY2 in block six, sub-lot XZ2 in block six, sub-lot YA2 in block six, sub-lot YB2 in block six, sub-lot YC2 in block six, sub-lot YD2 in block six, sub-lot YE2 in block six, sub-lot YF2 in block six, sub-lot YG2 in block six, sub-lot YH2 in block six, sub-lot YI2 in block six, sub-lot YJ2 in block six, sub-lot YK2 in block six, sub-lot YL2 in block six, sub-lot YM2 in block six, sub-lot YN2 in block six, sub-lot YO2 in block six, sub-lot YP2 in block six, sub-lot YQ2 in block six, sub-lot YR2 in block six, sub-lot YS2 in