

ORGANIZE 4-H CLUB

A group of girls gathered at the home of Mrs. Carl Kraeger on May 27, 1928 for the purpose of organizing a 4-H club. After much discussion, the girls decided to carry out the "How's and Whys for Young Cooks" which is second year cooking and first year canning.

The Sunshine Cookers is to be the name of the cooking club and the Worthwhile Canners is to be the name of the canning club.

The following officers were elected: Whipple Leonard, president; Dorothy Ruffner, vice-president; Kathleen Nolte, secretary for the cooking club; Mary Dirscherl, secretary for the canning club; Betty Anne Ruffner, news reporter.

We decided to have capsule friends again so the names were drawn. We decided to have both meetings together throughout the summer, starting June 7.

The Sunshine Cookers and the Worthwhile Canners held their first

business meeting at the home of Mrs. Carl Kraeger on June 7. Margaret Anne Vallery was a new member. Mrs. Forrest Leonard was elected assistant leader.

For the cooking club we discussed problems I and II, covering fruits and the uses of milk. Mrs. Kraeger demonstrated on quick bread.

In the canning club we discussed food spoilage and the methods of canning. Mary Dirscherl demonstrated how to test a jar for canning. Our club was given four dozen

E-Z seal pint jars. These were distributed among the nine members. There were five apiece and three over. The individual having the most work done by June 21, the next meeting, is to receive two of these jars and the second is to receive one.

BETTY ANNE RUFFNER,
News Reporter.

ATTEND PICNIC

Elmer Sundstrom and Mr. and Mrs. Russell Reeder were at Ashland Monday evening, driving up to attend the Rotary picnic, an annual event of the Ashland club. Mr. Sundstrom made up his attendance record as he was not here for the last local meeting.

VISIT OLD FRIENDS

Mr. and Mrs. Wayne Twitchell of Seattle, Washington are visiting here with Miss Amelia Martens. Mr. Twitchell was a shop man at the store house and was a member of the male quartette when a resident here some years ago. They are on their way to New York.

VISIT AT ARBOR LODGE

County Judge and Mrs. A. H. Duxbury and children, Dorothea and Richard, and Mrs. Mae N. Creamer, mother of Mrs. Duxbury, were at Nebraska City Sunday. The party visited at Arbor Lodge and inspected the historic mansion and also enjoyed a picnic party at the park.

URGED FOR STATE AUDITOR

Frances M. Hetherington of this city, who has been engaged in auditing work at Lincoln for the past two years, is being strongly urged by Young Democratic organizations for the position of state auditor. Mr. Hetherington is amply qualified for the office and would receive a strong support from his Cass county friends should he decide to seek the democratic nomination.

BOARD OF EQUALIZATION

From Wednesday's Daily— This afternoon the county commissioners were here to sit as a board of equalization and hearing any complaints that might be made by the residents of the county in regard to their tax assessment.

Phone news items to No. 6.

Friday! Saturday! 2 Big Value Days!

AIRKING BRAND PEANUT BUTTER 2-lb. Jar 21c	HINKY DINKY
APPLE BUTTER Old Orchard Brand 2-lb. Jars 2 for 25c	
TOMATOES Quality Brand No. 2 Cans 4 for 25c	

Ad for Plattsmouth Fri., Sat., June 24 and 25

Fresh Italian PRUNES No. 10 Can 29c	Kuner's Fancy Tomato Juice Giant (50-oz.) Can 19c	Morrell's Pride Deviled Meat No. 1/4 Cans, 2 for 5c
---	---	---

Pure Lard Lb. 9c	Hamburger 2 Lbs. 27c
Pork Roast Lb. 14 1/2c	Steak Lb. 25c
Beef Roast Lb. 16c	Pork Chops Lb. 21c
Veal Rolls Lb. 17c	Cheese 2 Lb. Loaf 41c
Minced Luncheon or Bologna Selected, 2 Lbs. 25c	Fish Fillets or Whiting Fish Lb. 10c
Boiling Beef Rib, Tender, Lean Lb. 9c	Cold Meats Fancy, Assorted Ready to serve, lb. 22c

Dundee, Robert's or Gehl's MILK 4 for 25c	Fine Granulated Beet SUGAR Cwt, \$5.25; 10 lb. 53c	Jar Caps Mason, Ctn. 1 Doz. 21c
JELL-O Choice of Flavors, 6 Pkgs. 27c	C & H Cane, 100 lbs., \$5.35. 10-lb. Cl. Bag. 56c	Jar Rubbers Heavy Red, 6 Pkgs. 25c

CHERRIES Fancy, Sweet, Large Washington BINGS, per lb. 15c	ORANGES Juicy Calif. Sunkist Valencia Large size, doz., 25c; Med. size, doz. 17 1/2c
Cantaloupes Fancy Calif. Pink Meat, Sweet Vine-Ripened, Lge. Jumbo Size, each. 10c	Pineapple Dozen, \$1.15 Each 10c
New Potatoes U. S. No. 1 Large Washed Calif. Shafter Whites, or Tex. ed Triumphs, 10-lb. bag. 23c	Cabbage Fresh, solid, green, lb. 2c
Grapefruit Juicy Calif. Sunkist Marsh Seedless, each 5c	Carrots Fresh Calif. Green Top Large Bunches, 3 for 10c
	Tomatoes Firm, Red-Ripe Texas, 2-lb. basket. 15c

Miller's Crispy CORN FLAKES Large Pkgs. 3 for 23c	Van Can's Pork & Beans 1-lb. cans 5c	Sunrise Sweet, Mild COFFEE 3 lbs., 45c; 1-lb. 15c
Miller's Toasted Wheat Flakes Reg. Pkgs. 2 for 23c	SALADA TEA Brown Label 1/2-lb. Pkg. 35c 18c	Hinky-Dinky BUTTER 1-lb. Carton 26c
	Green Japan, 1/4 lb. 15c	CASCO, Solids, lb. 27c
		Excello MARGARINE 1-lb. Carton, 2 for 25c

Clorox Cleans, bleaches. Pint bot, 13c ; Qt. 19c	Heinz Strained Foods Assorted Varieties 4 1/2-oz. Cans 2 for 15c
Climalene or BOWLENE. Large size 19c	HEINZ KETCHUP Large 14-oz. Bottle 17c
Pard Dog Food 1-lb. cans, 3 for 25c	Heinz Pickles Fresh Cucumber Style. 24-oz. Jar 20c
Spry Shortening "All-Purpose" 3-lb. can 51c	
Omar Flour 24 lbs., 85c; 48-lbs. \$1.59	
Salad Dressing BUTTER-NUT Quart Jar 31c	
Oxydol All-Purpose Soap Giant Pkg., 59c; Large Pkg. 19c	

TASTY! Creamy! Always Fresh! Try LAND O' LAKES Salad Dressing

Pint Jar, 19c; Quart, 29c
LAND O' LAKES CHEESE Five Varieties 1/2-lb. Pkg. **15c**

Lava Soap Large Bars, 2 for 17c	GRANULATED SOAP Large Pkgs. 19c
White King TOILET SOAP Reg. Bars, 4 for 19c	
White King 48-lb. Sack \$1.19	
Royal Flour FRESH SLICED WHITE 24-oz. Loaf 9c	
Bread GLENCOE SODA 2-lb. Caddy 15c	
Crackers (Plus Bot. Dep.) 26-oz. Bot., 3 for 25c	
Hire's Root Beer	

Rin 4 White NAPHTHA SOAP 10 Giant Bars. 33c	Butter-Nut Coffee Grind Regular or Drip
Northern TISSUE It's Lined! 4 Reg. Rolls 25c	2-lb. Can or Jar 52c 1-lb. Can or Jar 28c

WE PAY TOP PRICES FOR EGGS

Sale!

DRESS LINENS and RAYON SHANTUNG

All Colors, Regular 65c Quality

49c Yard

SHEER FABRICS for COOL DRESSES

- Flock Dot Voiles
- Batiste

29c Yard

SOENNICHSEN'S

PLATTSMOUTH, NEBRASKA

Men! It's Time to Buy STRAW HATS



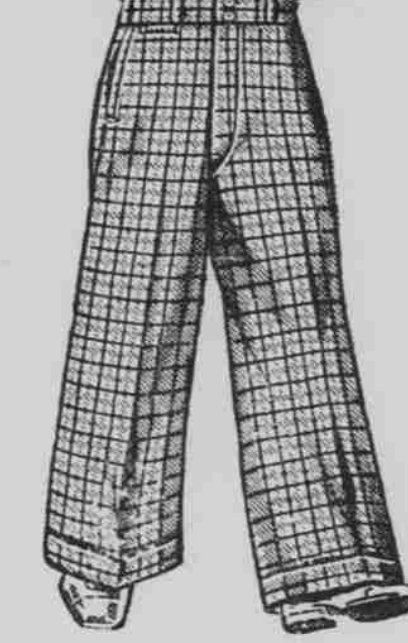
59c to \$2.45

Come early for the best selection from our complete assortments.

All sizes in popular styles, shapes and materials.

Harvest Hats, Helmets & Women's Coolie Hats **25c - 35c - 50c**

SANFORIZED SLACKS



\$1.25

High Waisted Models Self Belt, Wide Bottoms Tropicals, Francis and Corded Materials Values up to \$4.50

SOENNICHSEN'S

PLATTSMOUTH, NEBRASKA

"Eat Fleischmann's Yeast for Health"

Money Saving FOOD VALUES

MAXWELL HOUSE COFFEE Radiant Roast **2 lb. 58c** 1/2 lb. FREE

While they last—Regular or Drip Grind!

Ad for Friday & Saturday

THE NEW CEREAL You eat it like popcorn—the children can't get enuf. **2 for 25c**

Armour's Potted Meats 1/4 Size Tins, 3 for **10c**

DOMESTIC OIL Sardines 1/4 size tins, 3 for **10c**

SHURFINE Root Beer 12-oz. bottles, 6 for **25c**

3 24-oz. bottles, 25c Plus Bottle Deposit

DOLE'S Sliced or Crushed Pineapple No. 2 1/2 Can **20c**

2 for 39c

Miller's Corn Flakes Lge. Size, 3 for **25c**

SHURFINE Grape Juice Quart bottle **27c**

SNOWDRIFT Shortening 3-lb. Tin **49c**

ECONOMY Coffee Per lb. **15c**

3 lbs., 39c

GET THIS GLASS UTILITY PITCHER! WITH THE PURCHASE OF 2 FAMILY SIZE PKGS.

Kellogg's CORN FLAKES **2 for 25c**

Sunshine KRISPY CRACKERS

Butter Cookies SUNSHINE 2 Pkgs. for **25c**

MANCHESTER Soda Crackers M. B. C. 2-lb. caddy **17c**

1-lb. Caddy **17c**
2-lb. Caddy **32c**

SHURFINE Matches 6 Box Carton **19c**

Oleomargarine FARBEST 2 lbs. for **29c**

Energy Bleach Gal. Size, 45c **15c**

Ritz Crackers 2-lb. Box **23c**

TASTE WELL

Pork and Beans 300 Tall

Lima Beans 3 for **25c**

Spaghetti Doz. 95c

Red Beans

Kidney Beans

Hominy

BANANAS 1b. **5c**

LEMONS Doz. **25c**

Solid Cabbage, per lb. **2c**

Head Lettuce, per head **7 1/2c**

Beets, per bushel **75c**

Turnips, 3 lbs. for **10c**

Potatoes, 10 lbs. **23c**

10 lbs. Small Potatoes, 19c

Tomatoes, red ripe, 2 lbs. **15c**

Cantaloupe, large size, each **10c**

MEAT DEPARTMENT

SWIFT'S PREMIUM CORN FED Shoulder Beef Roast, lb. **19c**

MINCED HAM or Ring Bologna, lb. **15c**

ARMOUR'S STAR or WILSON'S Pure Lard, 1-lb. carton **10c**

WILSON'S CLEARBROOK (Full Cream) Longhorn Cheese, lb. **17 1/2c**

NATIVE CORN FED YEARLING Flank Steaks, lb. **27c**

Fresh Pork Roast, lb. **18c**

Fresh Pork Steak, lb. **20c**

Fresh Pork Hocks, lb. **10c**

Spare Ribs, 2 lbs. for **25c**

Smoked Pork Hocks, lb. **16c**

Fresh Dressed Rabbits

Fresh Dressed Fryers

Black & White

WE DELIVER — PHONE 23 AND 24

"Eat Fleischmann's Yeast for Health"