

As Congress Launched Income Tax Investigation



Committee in session

Sweeping investigation into alleged income tax evasion on the part of a number of the wealthiest men in United States was launched by a congressional committee following months of work on the part of treasury officials.

City Library Adds 3907 Books During Past Year

Annual Report Shows 2500 Visitors and 1957 Registered Borrowers to June 1937.

Reports of the Plattsmouth public library have just been completed and sent to the state library commission.

2500 persons have used the library for reading, study and reference during the year. 1957 borrowers are registered. The number of volumes loaned to the library shelves during the past year. This brings the total number of volumes to 20,047.

Expenses for salaries, repairs, book binding, heat, water, lights, insurance and desk supplies amounted to \$2,760.72. The rate of the city tax levy for the library is 1.5 mills.

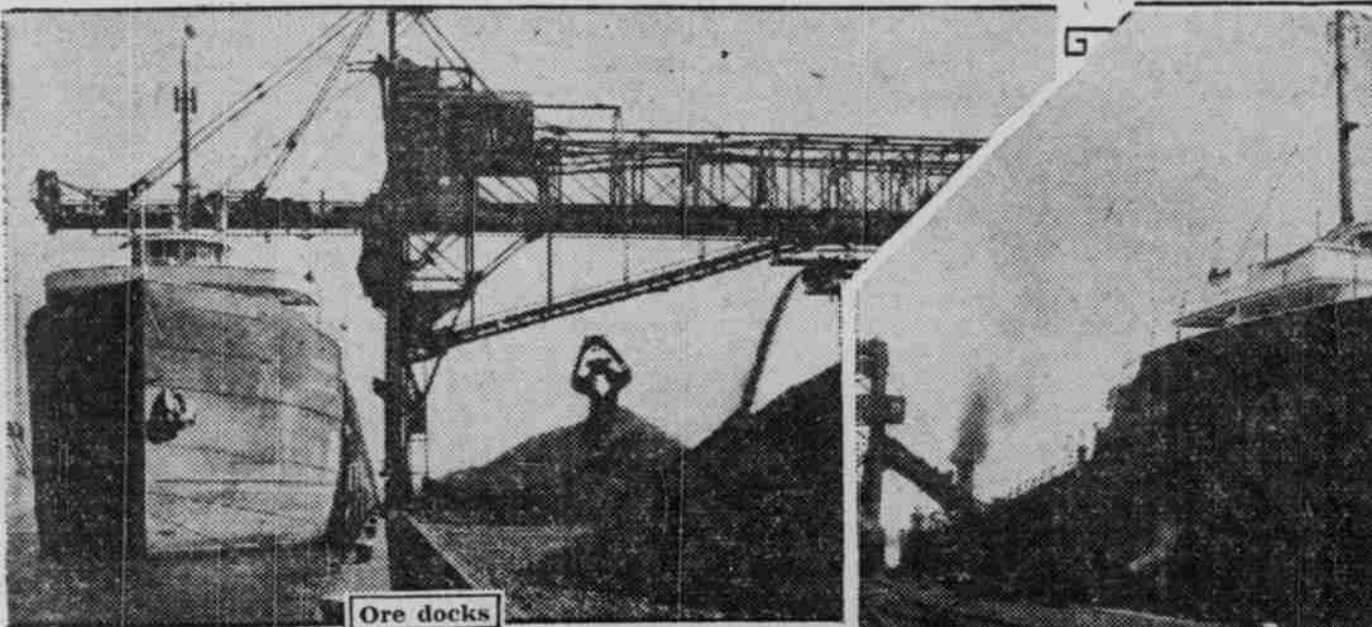
The Plattsmouth library was open 304 days on the following schedule: 2-5:30 and 7-9 during the winter months, the same hours prevail in summer except the library closes at 8 p. m. during July and August.

Six holidays are observed, New Year, Decoration Day, July 4th, Labor Day, Thanksgiving, and Christmas day.

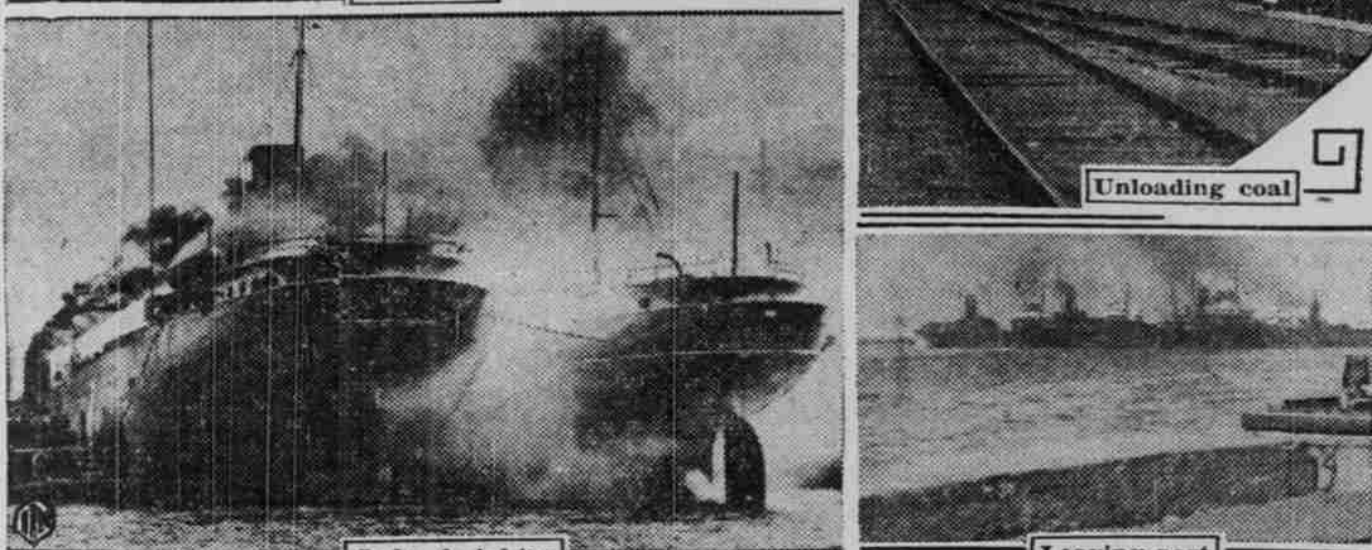
Miss Olive Jones is librarian and Miss Verna Leonard, assistant librarian. Members of the board, appointed by the city council for a term of three years are: E. H. Wescott, president; Miss Barbara Gerling, secretary; Mrs. P. T. Heineman; Dr. H. G. McClusky; and L. S. Devoe, superintendent of schools.

Subscribe for the Journal.

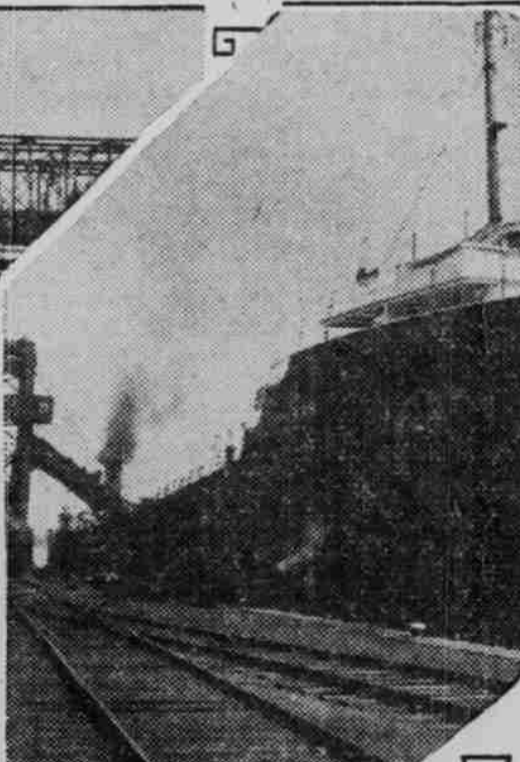
Great Lakes Shipping on Way to New Record



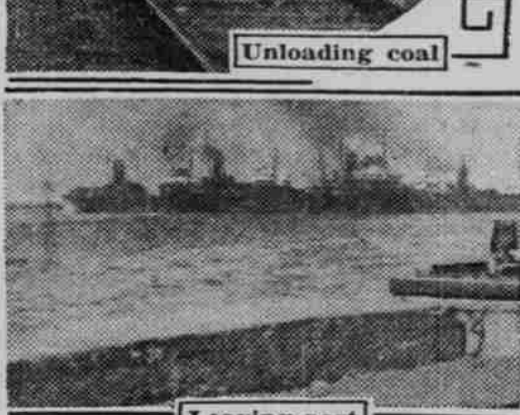
Ore docks



Lake freighter



Unloading coal



Leaving port

Tonnage moved so far this season on the Great Lakes indicates that a new record total for iron ore and coal shipments may be recorded this year. Ore moved thus far totals 13,814,411 gross tons in comparison to 5,069,000 tons for the same period last year. Coal shipments thus far total 12,561,000 tons in contrast to 9,185,000 for the same period in 1936.

Flood Waters Again Sweep Sixth Street

South Side Creek Overflows Following Rain Wednesday and Causes High Water Again.

Wednesday afternoon saw a repetition of the high water sweeping down from south side creek on Chicago avenue and to bring the flood tide up to the curb on Sixth street from Pearl to Main and overflowing into Main street to a considerable depth.

While the rainfall was comparatively light, .76 of an inch, the result was the same as though a much heavier fall was recorded as far as the overflowing of the streets was concerned and demonstrated clearly that the present sewer arrangements on Sixth street are wholly inadequate and a menace to the properties along there and also Main street where the flood waters are poured when the sewers on Sixth street fail to carry the load.

As the flood waters were lapping at the edge of the curbs on Sixth street manholes were removed to find that the box sewers that were made to carry off flood water were less than a third full although a raging torrent was sweeping down the street.

Many were heard urging that additional gratings be placed on top of the box sewers on Main street in the block from Fifth to Sixth streets and also that more and larger openings be made on Sixth street to prevent the disaster that will follow an extraordinary rain if the present conditions are allowed to continue.

The flood also left a very striking story of soil erosion as the waters in receding left in their wake deep and rich black mud from the upper part of Chicago avenue down into Main street. Residents whose properties adjoin the avenue had just completed digging out the mud caused by the Tuesday rain when their labors were rendered useless by the Wednesday storm.

WIN A GOOD GAME

Friday afternoon the American Legion baseball team visited Nebraska City and won from the Junior Legion team by the score of 11 to 3, with the Plattsmouth Juniors playing a good game throughout. The local hurlers were Earl Wiles and Stuart Sedlak, both pitching a good game and receiving excellent support from their team mates.

The pitcher for Nebraska City was Edward Fullerton, Jr., former Plattsmouth boy.

The box score of the game was as follows:

Table with 10 columns: Name, AB, R, H, PO, E. Rows include Sedlak, Shiffer, Phillips, Wall, Hayes, Wiles, Rehal, Werstler, Jones, Jackson, Lutz, Noble.

TO SUMMER IN WEST

Mrs. Joseph Wooster and son, Raymond, departed this week for Denver where they are expecting to spend the summer months. They will join Mr. Wooster who has been working at the railroad shops there for the past year and will enjoy the cool of the Colorado climate.

They will return in the fall for Raymond to resume his school work, he being a member of the class of 1938 of the local high school.

Phone news items to No. 6.

View Latest Developments on County Tour

ous stand of broome is highly profitable, not only for pasture and hay, but especially for seed production. It can be harvested and threshed with ordinary farm machinery.

Another value of the broome-alfalfa mixture is that the cattle do not bloat on the feed. The broome grass is preferred by the livestock and it remains green during the entire summer.

Native Buffer Strips On the F. J. Hild farm, members of the tour saw contour and buffer farming in which a timothy pasture had been left as buffer strip. This method is also working very satisfactorily. However oats or wheat make adjustment easier on the buffer strips. The gully was left in sod.

Farms were also shown in which a furrow is used as a terrace. The furrow is used in permanent pastures which are already established. They are placed at closer intervals than terraces but do not destroy the permanent seeding.

Check Dams Approximately 160 C.C.C. boys are employed in hand labor every day. One of their projects was seen on the Carrie Clويد farm. Here bad gully erosion is being checked by a series of brush and wire check dams.

At the headwater of the gully a diversion ditch has been built so that the water may be controlled in the fingers. A series of eight dams made of brush and wire are building up deltas. Willow aprons prevent a "cutting under" of the dams. Several feet of soil have been built up this spring in the gully. As the dams are completed the slopes are planted to trees. The C.C.C. boys have completed five miles of ditches on 43 farms and planted over five thousand trees.

The Kaffenberger farm also displayed a fine example of contour and strip farming. Oats is planted on the knoll. After about a 1 1/2 foot drop the corn rows are started. They make complete circles about the hill. A buffer strip of rye follows. Close growing crops are planted both above and below the corn.

Lunch at Kaffenberger Grove A free lunch was served in the grove on the John Kaffenberger farm. The lunch was served by the farm bureau employees and C.C.C. workers.

Following the lunch D. L. Gross spoke. He told of the soil conservation in the state as a whole. There are 19 areas in Nebraska. 16 are cared for by C.C.C. camps such as in this county while in three project areas, W.P.A. labor is used.

Soil conservation was introduced into Nebraska in 1934. The work is now entirely experimental. The farmers enter into a five year contract for the work on their farms. All labor is furnished by the camp and most of the materials are furnished by the farmer.

Mr. Gross pointed out the danger of soil erosion in this country. He stated that it may be prevented by cutting down the row crops and by learning how to grow to prevent erosion. He drew the attention of the men to many contours which had been broken over on farms seen during the morning with a "wash board" result. He told that field draws become deeper if not protected. He suggested that machinery be lifted when crossing them in order to allow vegetative growth which prevents erosion and causes silting.

Field terraces were seen on the Lester Wagener farm near Cedar Creek. Here the terraces were similar to those upon the Young farm except that they are not closed and have a drain which empties into a seeded terrace outlet. At the bottom of the outlet a masonry structure with a 100 foot concrete floor was shown which will take care of the terracing run-off as well as drains from the other fields.

Study Gallies. On the George Stoehr and Victor Stoehr farms buffer strips and earth dams with drop inlets are showing up to good advantage on exceptionally hilly land. An interest-

Getting Cutaway



Franklin D. Roosevelt, Jr.

Here is Franklin D. Roosevelt, Jr., son of the president, as he appeared during a fitting for the cutaway which he will wear at his wedding to Ethel duPont on June 30 at Wilmington, Del.

County Surveyor Discusses Facts of Drain Area

Describes Work of the Planning and Construction of the New Sixth Street Sewer System.

In the last few weeks the local citizens have seen quite large volumes of water coming down the Chicago avenue and also continuing on down Main street, which condition has existed since the town attempted to cover up a creek bed and expect the water to never attempt to continue down the same course again.

It is true that the Works Progress Administration built a new 7" concrete pavement from Pearl street to Vine street and under this pavement built laterals and also a storm sewer.

At the time of construction the only inlet to the 4'x4' box sewer from the south was a 30" diameter tile, which end area when running at full capacity would take care of 4.9' of water, thus leaving 11.9' of the box sewer empty.

The new construction on W.P.A. continued this 4'x4' box sewer on south to the north line of Pearl street, and south line of Vine street, also constructed inlets on both sides of the street with end area openings which aggregate end area total 1 1/2 times the opening of the 4'x4' box culvert which according to the Henningson Engineering Co. of Omaha was ample size for the inlets.

In other words the full capacity of the Sixth street pavement will only take care of 16' square feet of water, then when the water comes around the corner of Pearl street curb full there is 60-square feet of water to be taken care of in a 16' capacity storm sewer. Then as the water crosses Main street, Sixth street will lower the water only 4" on the curbs. I feel sure that if the vertical bars were removed from the inlets we would be sure of filling the 16' storm sewer to capacity.

Now then lets take a look at the real drainage problem of the south area: The approximate area of drainage that comes into Sixth street is 1000-1200 acres and in order to have ample sewer to take care of this would take an aggregate sewer system of 150' end area opening, but we have only openings for 60.7' including the 90' sewer under 6th street that is not connected to the lateral system of the Sixth street paving, between Vine and Pearl.

At the Welshimer oil station there is a 4'x4' concrete box across the paving and that overflows, then on north along the avenue 1500' we find the sewer is only 30" in diameter which will take care of 4.9' of water with a load of 40 to 808 to handle, this is where the water comes out on to the pavement of the avenue, and I am sure that W.P.A. did not and would not attempt to use a reduction of drainage such as this is. Also W.P.A. made suggestions as to their approval on ever projects along Chicago avenue to relieve part of the flood water that we get on every heavy dew, but surfacing seems to be the only worth while project at the present time.

R. D. FITCH, JR., Cass County Surveyor.

Insurance is for Protection

Get the best protection and service available — from THIS established local agency.

PROTECT WHAT YOU HAVE

We sell Every Kind of Good Insurance

Call or See

INSURANCE AND BONDS DUXBURY & DAVIS PHONE 16 PLATTSMOUTH

YANKEE \$1.50 Ingersoll HAS TIMED 150 MILLION LIVES

Fire Destroys Property Is your property protected with sufficient insurance? You can buy only the best from— SEARL'S-DAVIS