

Cass County Historical Society in Plattsmouth

Plans Under Way for Third Meeting of Organization to Be Held on February 2.

February 2 has been set as the date for the third meeting of the Cass County Historical Society.

The historical society was organized in this county May 20, 1936, at a meeting at Weeping Water.

Also was host to the second meeting of the society which was held October 13, 1936.

Mrs. Carl Ganz of Alvo and Miss Hazel Bafer of Plattsmouth are acting on the program committee.

All persons interested in preserving the history of Cass county are invited to attend the meeting.

SUFFERS FROM FLU

From Thursday's Daily—Miss Minnie Hill, clerk in the office of County Judge A. H. Duxbury, was not able to be on duty today.

Plattsmouth offers a splendid market for farm produce.

REPORT OF SHOES ISSUED

Week Ending January 22

Outgrown Overshoes, Rubbers 5
New Shoes 2
Previously Issued 60

Cost of repairing outgrown shoes and purchase price of new shoes and overshoes is paid out of Community Building club funds.

There is still much demand for outgrown and serviceable used shoes that can be repaired without too much expense.

NEBRASKANS WIN HONORS

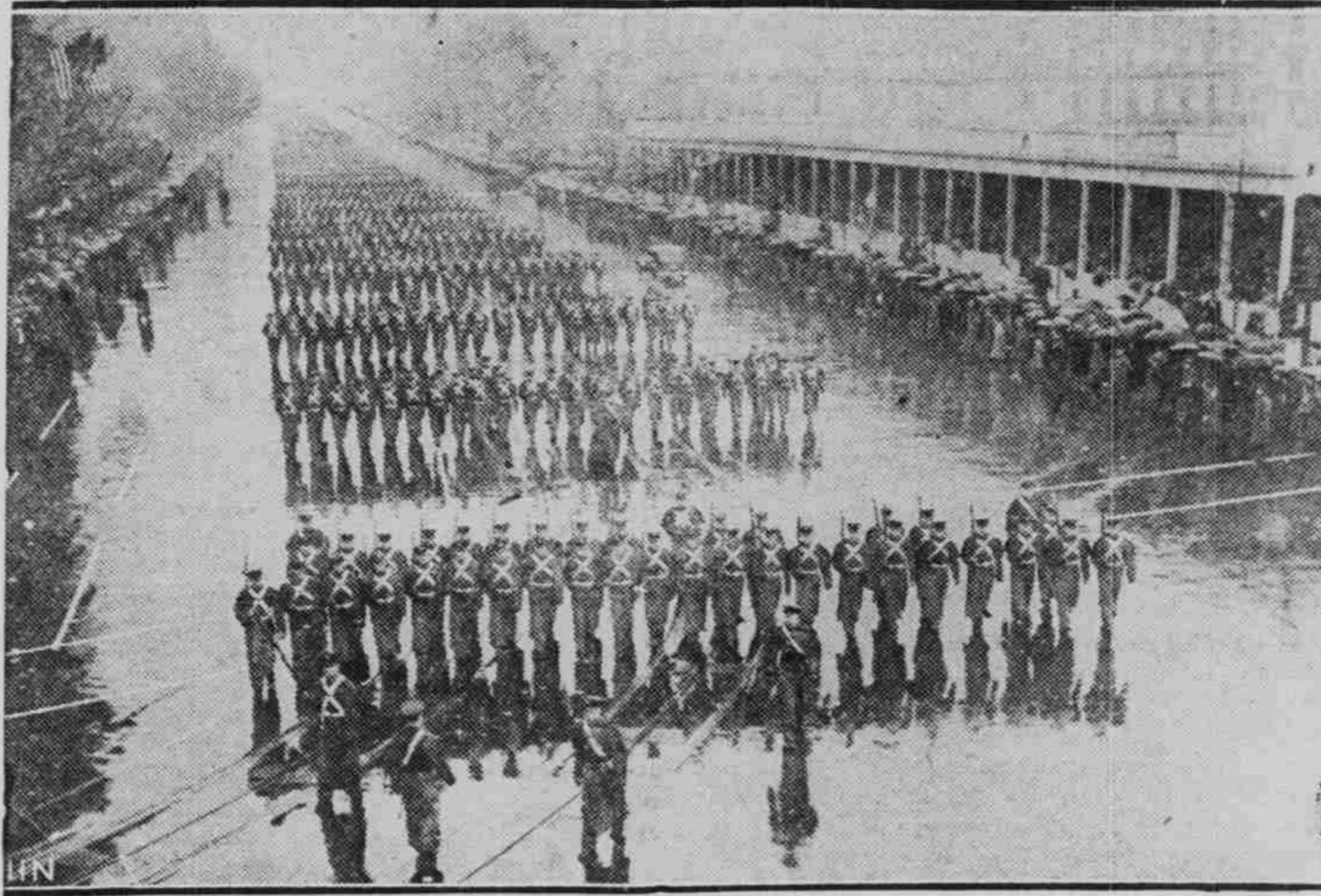
Denver.—A. H. Schmidt, Kansas City livestock raiser, who believes in sweetening his purebred cattle's feed with molasses, dispensed another blue ribbon.

Other awards Tuesday: Hereford bull, calved after Jan. 1, 1936: Way ranch, Wood Lake, Neb., first.

GRAND JURY AT OMAHA

Omaha.—The United States marshal's office has sent notices to 36 Nebraskans to report for service on the next federal grand jury.

Thousands Brave Rain to View Inaugural



The above striking view of the inaugural parade in Washington Wednesday shows the line-of-march as it proceeded toward the reviewing stand down Pennsylvania avenue, which was lined with hundreds of thousands of spectators, despite a drenching cold rain.

Widowers Seek Spinsters to Wed Second Time

Figures of Insurance Company Show Larger Percent Than Widows Marrying Bachelors.

New York, N. Y.—In selecting a second mate the average widowed or divorced man has a stronger tendency to marry a spinster than the widowed or divorced woman has to marry a bachelor.

WOMEN IN THE HOME

Madison, Wis.—Another bill designed to take the married woman out of governmental employ and put her back in the home went to the Wisconsin legislature.

Three Hundred Benefit Through Farm Debt Aid

Announcement Made of Benefit Derived by Farmers of Nebraska, Dakotas and Kansas.

Three hundred and sixty-nine farmers in the Dakotas, Nebraska and Kansas, as well as their creditors, benefited from farm debt adjustment work completed in December.

Proposed Primary Changes are Announced

Want to Correct Evil of Voting by Name, Rather Than Ability of the Candidate.

Proposed changes in the Nebraska primary law, to get away from the abuses of unfamiliarity of voters with the names on the ballots, were announced Thursday by the committee of ten from both parties who drew the proposal.

Provision is made for a pre-primary convention of party delegates and a post primary. At the pre-primary convention, candidates for office who get in excess of 30 percent of the convention vote will be endorsed by the convention.

The preprimary in counties will be on the tenth Tuesday before the state primary; in the congressional district, the ninth Monday before the state primary; and in the state, the ninth Tuesday before the general state election primary.

Provision is also made that delegates to county conventions shall continue to act as such until the following biennial primary, except in case of death, or change of residence.

Mynard Community club will hold its regular monthly meeting Friday, February 5th.

FOR SALE Improved 80 Acres Near Murray Possession March 1st

SEE PHONE #9 SEARL'S & DAVIS

MODERN WOODMEN DECISION

Santa Fe, N. M.—A three judge federal district court decision received here gave the Modern Woodmen of America a permanent injunction against Don R. Casados, New Mexico corporation commissioner, restraining him from court action to collect a 2 percent state tax from the fraternal association.

The opinion by U. S. Circuit Judge Orle L. Phillips, the late George McLernett and U. S. District Judge Colin Neblett, held that the Modern Woodmen was a fraternal benefit society as defined by New Mexico state and that such societies are not subject to the tax levied against "old line" insurance companies.

Black & White

- Pink Salmon, 1-lb. tall cans, 2 for 23c
Bisquick, 40-oz. pkg., 31c; 20-oz. pkg., 17c
Staley's Starch, 1-lb. pkgs., 2 for 15c
Butter-Nut Jell, asstd. flavors, 4 pkgs., 19c
Crisco, for all shortening, 3-lb. tin, 59c
Calumet Baking Powder, 1-lb. tin, 21c
Frank's Kraut, No. 2 1/2 can, 11c
Hard Mixed Candy, 2 lbs., 25c
Dates, fancy Bulk, 2 lbs., 19c
Soda Crackers, 2 lbs. for, 17c
Lighthouse Cleanser, 3 for, 10c
Del Monte Apricots, No. 2 1/2 can, 21c
Apricots (Whole), large No. 2 1/2 can, 17c
Peaches, large No. 2 1/2 cans, 2 for, 35c
Prunes, Santa Clara, 4 lbs., 25c

Fruits and Vegetables

- CABBAGE, new Texas, lb., 4c
ORANGES, Juice, doz., 29c
RUTABAGAS, 3 lbs. for, 10c
LETTUCE, solid iceberg, large head, 10c
GRAPEFRUIT, Texas Seedless, 8 for, 25c
CELERY, large bunch, 10c
APPLES, Golden Delicious, 3 lbs., 25c

MEAT DEPARTMENT

- Fresh Pork Liver, lb., 12 1/2c
Fresh Pork Hocks, lb., 12 1/2c
Fresh Pork Hearts, lb., 11c
Fresh Pork Brains, lb., 11c
Extra fancy Minced Meat, 2 lbs., 25c
Dold's Sterling Bacon, lean, lb., 31c
Shoulder Beef Steaks, lb., 19c
Heinz Dill Pickles, 3 for, 10c
Lamb Loin Roast or Steaks, lb., 21c

HERRING

- Mixed, keg, 83c Milchers, keg, 95c

SPECIMENS TO WASHINGTON

Dr. Earl H. Bell, anthropologist at the University of Nebraska, sent Horace G. Byers, chief of the soil, chemistry and physics research division of the United States department of agriculture, a box packed with the vegetable material that was unearthed by a university expedition working at the Lynch sites last summer.

Hepburn Linked to Ace Airman



Katharine Hepburn Howard Hughes When Howard Hughes, ace airman and wealthy sportsman, flew to Chicago from New York after setting a new transcontinental air record, his trip gave credence to reports that he was joining Miss Katharine Hepburn at the altar there.

Choice Black or White FIGS
8-oz. Pkg., 8c
6-oz. Pkg., 6c
BULK, 2 lbs., 25c

HINKY DINKY
Plattsmouth, Tues., Wed., Jan. 26-27

Musselman's JELLY
2-lb. Jar 22c
(Apple, Grape or Rasp.)

Staregon Brand Blackberries
No. 2 Cans 2 for 25c

- BOILING BEEF, choice, lean Rib, lb., 10c
PORK LIVER, young, tender, lb., 10c
BEEF STEAK, choice corn fed Beef Shoulder, lb., 17 1/2c
HAMBURGER or Pork Sausage (Bulk) 2 lbs., 25c
SALAMI, Cudahy's Fancy Cotta, lb., 19c
NECK BONES, Fresh Pigs Feet or Oxtails, lb., 5c
KRAUT, fancy Wisconsin Bulk, 2 lbs., 15c
OYSTERS, fresh shipment, solid pack, pint, 24c
SALMON Sable or Filets of Fish 2 lbs., 25c

BUTTER Hinky-Dinky, lb., 35c CASCO Solids, lb., 36c

Sunlight Margarine 2 1-lb. 33c

Del Monte Red SALMON 1-lb. Tall Can 21c

- GRAPEFRUIT, large size, doz., 35c; each, 70 size 5 for 25c
APPLES, Idaho Winesaps, bu., \$1.85; Lb., 5c
Fancy Idaho Rome Beauty Apples, 4 lbs., 25c
RADISHES or Green Onions, large bunch, 2c
TOMATOES, fresh, firm, red ripe Cuban, lb., 10c
CARROTS, Calif. green tops, large bunch, 5c
CABBAGE, fresh, solid, crisp Texas, lb., 4c
POTATOES, 100-lb. bag, \$2.49; 15-lb. peck, 43c
YAMS, Louisiana Porto Ricans, 4 lbs., 25c

Big 4 White Naptha SOAP 10 Bars 29c

Pioneer Garden PEAS No. 2 Cans 21c

Peninsula Brand Tomatoes No. 2 Cans 25c

Santa Clara PRUNES 80-90 Size, 4 lbs., 25c

VALLEY MAY Salad Dressing 8-oz. Jar, 10c

Improving our farm-to-market roads will be of direct benefit to everyone in Cass county.