

SEE HIGH COURT ERRORS

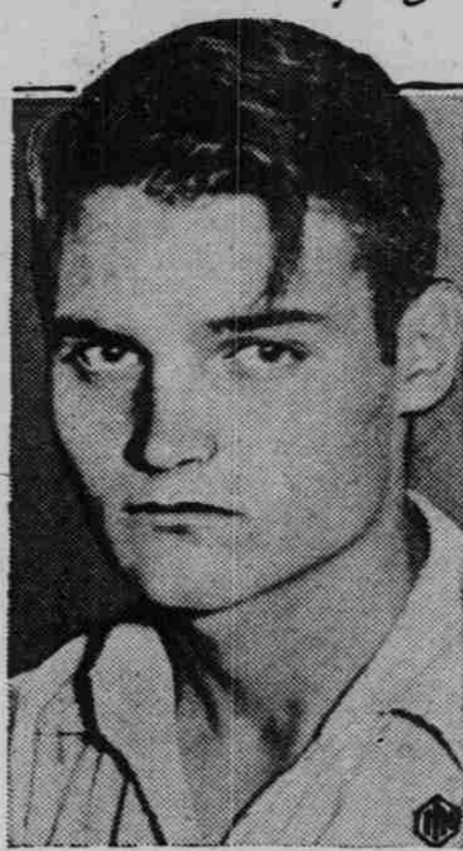
Chicago. — Rep. William Lemke, union party presidential candidate, told a press conference that he believed the supreme court has "misconstrued the constitution in three recent cases," adding that "a constitutional amendment may be necessary if the court persists."

The opinions he regarded as wrong, he said, were the ones invalidating the Frazier-Lemke mortgage moratorium act, the New York minimum wage bill, and the railway pension act.

COWBOY WANTS HOMESTEAD

Alliance, Neb.—Because he is under contract to remain until Saturday as a broncho rider with a rodeo at Sheridan, Wyo., Elson Rice communicated with Frank Brooms, U. S. commissioner here, asking an extension of time for filing final proof on a homestead near here. The law allows three days grace. Rice's filing is one of the first in several years, and Brooms said it probably would be one of the last. Rice is famous throughout this region as an expert professional rodeo cowboy.

Confesses Slaying



Woodrow Fisher Investigation of the holdup-slaying of a Dayton, O., grocer was reopened following the alleged confession of Woodrow Fisher, above, that he was the murderer and not his pal, Charles Smithson, who had been convicted of the crime.

Wildlife Restoration is Problem for Everyone

Twelve Important Questions Asked and Answered in the Following Article on Subject.

1. What is the Status of North America's Natural Resources? North America's natural resources have been wasted, looted, and despoiled. Our game, fish, forests, waters and soils have been devastated and impaired to an alarming degree. A paralytic picture of a man's stewardship of nature's bounty, due wholly to lack of foresight and constructive management, reveals the account far in the red. A few major items on the profit and loss statement show:

- 1. 697,000,000 acres of original forest denuded.
2. 100,000,000 acres of original wildlife breeding grounds drained.
3. 85% of our lakes and streams polluted by industries and municipalities.
4. 173,000,000 acres of remaining public domain lands overgrazed and denuded.
5. Eight wildlife species extinct; others reduced to verge of extinction; waterfowl supply a fraction of former abundance; farm and forest game diminished; valuable furbearers endangered; and food and game fish supply seriously diminished.

Ford Donates Park



Henry Ford One of the few radio appearances made by Henry Ford, motor magnate, above, occurred when he formally presented to the city of Dearborn, Mich., a wooded tract to be used for park purposes.

Community Sale

to be held at Pavilion on paved highway No. 75, 1/2 mile north of Platte river, at LaPlatte, Neb., on Thursday, July 30

Sale Starts at 1 P. M. There will be offered Live Stock, Farm Machinery and many other articles for your bidding!

BRING in what you have to sell, but get in early as possible before sale starts. Will sell any and everything. K. W. Grosshans MANAGER Rex Young (Personally) - Auctioneer William Reynolds - Clerk

SEEK DROUTH DESIGNATION

Hubbard, Neb.—Decision to request that Dakota county be declared in the drouth area was reached at a meeting of 50 farmers and business men here. A statement outlining the county's need and making the request was forwarded to W. H. Brokaw of Lincoln, director of extension activities. Steps toward setting up machinery to dispense federal aid, in case the county's request is granted, were taken.

TAVERN MAN ROBBED

Omaha.—Rolly Seafus, tavern operator at Valley was robbed of \$65 by a gunman who held him up at the door of his garage. Seafus told the sheriff's office here that the gunman, after robbing him, forced him to drive to a point a mile southeast of Valley where the robber stepped from

the car and directed Seafus to drive home.

Large or small—your printing job will receive our prompt attention. Call No. 6.

Black & White Wednesday Specials. Spec. Beverage Sale, 3 lge. bottles. 25c. Grape Juice, quart bottle. 27c. Ice Tea Blend, quart jar. 15c. Tomato Juice, Oteo, No. 10 tin. 39c. Prince Tomato Juice, 50-oz. tin. 27c. Sugar, 100-lb. bag. \$5.19. Miller Corn Flakes, large size, 2 for. 19c. Wheaties, 2 pkgs. for. 25c. IGA Soap Chips, large pkg. 22c. Peaches, syrup pack, No. 2 1/2 can. 15c. Van Camp Tomato Soup, per can. 5c. Clorox, quart bottle. 19c. Oakite, Dish Mop Free with 2 pkgs. 23c. MEAT DEPARTMENT: PORK CHOPS, lb. 21c. MINCED HAM, lb. 15c. BACON, Swift's, half or whole, lb. 25c. SUMMER SAUSAGE, Swift's, lb. 22c.

NURSERYMEN IN A PROTEST. Dallas, Tex.—Disatisfaction with what was termed the federal government entering the nursery business in the guise of soil conservation, erosion and tree planting projects was expressed by the American Association of Nurserymen here. Farm Loans NO STOCK TO BUY NO DELAYS Optional Payments SEE ME SEARL'S DAVIDS

ALL THIS WEEK OUR FINAL JULY Clearance STILL LOWER PRICES!!! Every Summer Garment Included in This Sweeping Sale DOWN STAIRS SPECIALS 25 prs. Summer Slacks Including Both White and Colors! Sizes 12 to 20; Values to \$1.19 Out they go at 68c pr. 15 Shirley Temple & Cinderella Hats Both White and Colors; Sizes 7 to 16 Values to \$1 for 29c 22 prs. Shirts and Halters Values to \$1.19 at 68c 12 Beach Robes at 88c More than 100 Smart Summer Wash Dresses... 88c - \$1.48 - \$1.88 Voiles, Organdies, Ripple Crepe, Eyelets, Wash Crepes, String Lace, Shantung and Linnens Both one and two piece - Sizes 14 to 20; 38 to 46 - Values to \$3.95 Pease Style Shop Largest Exclusive Ladies Store in Cass County, Plattsmouth, Nebr.

7. What Part Will Each of These Play in the General Program? County federations of wildlife interests are essential to advance local game, fish and other conservation activities, and to lend effective support to statewide, provincial, national and international programs. State and provincial councils, composed of all county federations and various statewide and provincial groups, representing all the organized forces interested in wildlife restoration, are necessary to the promotion and maintenance of sound statewide and provincial programs, and to the support of interstate, national and international projects. Coordinated action, so vital to the attainment of the desired goal, cannot be achieved except by a clearinghouse through which comprehensive and effective programs will be developed. An international federation, composed of state and provincial councils and national organization, representing all groups interested in wildlife, will serve as that clearinghouse. 8. Will Each of These Cooperating Units Be Independent, and Govern its Own Policies? Yes. 9. How Will Policies of the State and Provincial Councils Be Determined? Through accredited representatives from the cooperating organizations. 10. How Will the Policies of the International Federation or Council Be Determined? Through accredited representatives from the cooperating organizations. 11. What Relationship Will Existing National Organizations Have to the Proposed International Federation? All organizations will be invited to cooperate, but none will control or dominate its policies. 12. What is the Immediate Program for Action? It is recommended that state federations act through state committees, elected by representatives from cooperating organizations, (a) to consider and to formulate state programs for conservations of wildlife, (b) to secure definite action in each state looking toward state and national conservation results, (c) to secure representation in determining a sound and comprehensive national conservation policy, and (d) to coordinate state councils through an international federation.

ALL Dress Straws 20% Discount for Cash WESCOTT'S Since 1879

Armour's Star POTTED MEAT 5-oz. Can 17c 3 for 3 1/4-oz. Can 10c 3 for SNOWDRIFT All Purpose Shortening 3-lb. Can (with card signed at store) 49c Van Camp's Tomato Juice 14-oz. Can 7c Del Monte Crushed Pineapple 8-oz. Can 7c High Knob Brand Tomatoes No. 2 Cans 3 for 27c NECK BONES, fresh, meaty, 3 lbs. 10c HAMBURGER, freshly prepared, 2 lbs. 19c PORK CHOPS, choice center cuts, lb. 22c VEAL CUTLETS, choice, tender, lb. 20c CUBE STEAKS, choice, tender, lb. 23c MINCED HAM, selected quality, lb. 10c CHEESE, Kraft, American or Brick, 2-lb. loaf. 47c Sunrise COFFEE 3 lbs. 49c 1-lb. Pkg. 17c Casco BUTTER 1-lb. Carton 35c Sunlight Margarine 1-lb. Ctn. 29c PEACHES, Arkansas Elberta Freestones, qt. basket. 15c U. S. No. 1. Ripe packed bushels, \$2.30. CANTALOUPEs, 45 size, 10c each, 3 for 25c California Turllocks, Delicious, Sweet, Vine-Ripened. WATERMELONS, red ripe, 30-lb. avg., each 49c Georgia Tom Watson Variety, Half melon, 25c. LEMONS, large, juicy California Sunkist, doz. 45c ORANGES, 216 size, doz., 35c; 344 size, doz. 19c Fancy Calif. Sunkist Valencia, Sweet and Juicy. PEAS, fresh, tender, full-pod California, lb. 7 1/2c CUCUMBERS, fancy, long green for slicing, each. 5c CARROTS, fancy, fresh Calif. green top, 2 lg. bchs. 9c Light House Cleanser Can 3c P & G or Crystal White SOAP 7 GIANT BARS 25c