

(Political Advertising) (Political Advertising) (Political Advertising)

Paul Weaver

FALLS CITY
Republican Candidate
for CONGRESS



Fifty-seven years old. Married, seven children. Graduate University of Nebraska and Nebraska College of Law. Practicing attorney by preference 25 years. Owns thirteen hundred acres in Richardson county, personally operates nine hundred acres, and from personal experience knows and realizes the tragic and perilous condition of the farmer and all business depending on agriculture!

Weaver Believes—

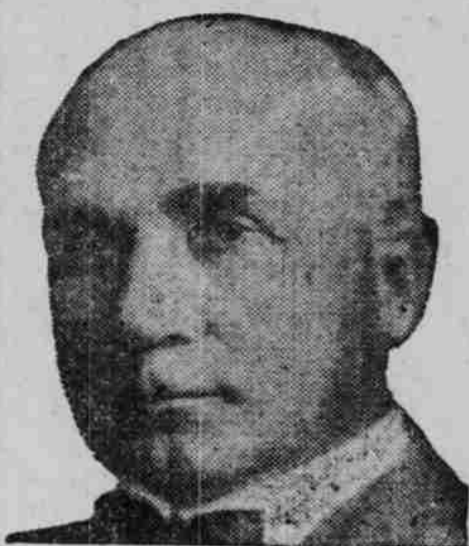
That production costs of the farmer must be drastically lowered to enable him to compete in the world's markets at a profit and to do this interest rates must be cut and farm mortgages refinanced at low interest as in the pending Frazier-Lemke Bill . . . That all business interests of the Middle West, being dependent upon the prosperity of agriculture, must unite in demanding that agriculture receive its pro-rata share of the national income . . . That adequate old age pensions are necessary to improve consumptive demand, employment, wages and prices.

As Paul Weaver Believes . . . So will He Stand

VISIT RELATIVES HERE

Mr. and Mrs. J. L. Sorensen and

(Political Advertising)



ERNEST B. PERRY

Republican
FOR CONGRESS
FIRST DISTRICT

Graduate University of Nebraska; married; five children, senior member of law firm Perry, VanFelt & Marti; member Legislative Sessions 1903-05; District Judge 1912-20; United States-Mexico Claims Commission 1924-26.

Hear Judge ERNEST B. PERRY, Republican for Congress . . . over KEAB at 6:30 A. M., Tuesday, April 14, 1936, on the "Farm Problem."

son, John, of Geneva, Nebraska, have been here as guests at the home of Dr. and Mrs. P. T. Heineman, the latter being a sister of Mrs. Sorensen. The members of the party with the R. W. Knorr family were dinner guests on Sunday at the home of Superintendent and Mrs. L. S. Devoe and family.

A navigable Missouri river by 1937 is the promise of Missouri river development boosters.

SELECT NEW TEACHER

Miss Jessie Joy who has been teaching in District No. 10 known as the Irvin school has been forced to give up her school work because of ill health. Her place for the remainder of the school term will be filled by Mrs. Ben Albin of Union. Mrs. Albin formerly taught in the Nebraska City public schools.

Daily Journal, 15c per week.

GEO. E. NICKLES

The voters of Cass and Sarpy counties are interested in sending to the Unicameral Legislature, men who are known to have the ability and knowledge of State affairs.

Mr. George Nickles, of Murray, is a candidate for that position. Mr. Nickles is a gentleman known to this district as one of the substantial taxpayers and legislators; one whose

ability was recognized by his co-workers in the last session of the Legislature and he was selected as Chairman of the Finance Committee, one of the most important committees of that body. He knows the State, its finances and needs, and a vote for Nickles is a vote for good government.

Plattsmouth offers a splendid market for farm produce. Local dealers pay top prices.

Dress Up for EASTER

Beautiful New Ties
HAND MADE

75c

Full Line Spring Hats
LATEST STYLES

\$2.95

Young Men's Suits
\$12.50 to \$20

WESCOTT'S

Since 1879

MOVED

We are Now Getting Settled in Our New Location in the Masonic Bldg.

with a complete stock of Meats, Groceries, Fruits and Vegetables, and will be able to serve you efficiently this week end in all these lines. We invite you to watch for our ad next week announcing a formal opening of our fine new store and a "Grand Opening Sale" at typical Mullen money-saving prices. Remember, we can supply all your wants this week, though not completely settled.

MULLEN'S NEW MARKET

First Door West of Wescott's Store

Let's take a Look at these Record Bargains

Bach's Store

Friday and Saturday

Telephones 18 and 19

Free Delivery Service

COFFEE

Butter-Nut, 1-lb. Can
31c

Folger's Coffee, per lb.
31c

FLOUR

Omar, 48-lb. Bag for
\$1.69

A. G. B. Flour, 48-lb.
\$1.55

- Olives, Spanish Stuffed, regular 20c jar 15c
- Stuffed Olives, pint jar 32c
- Olives, Plain, 15-oz. jar 22c
- Sweet Pickles, quart jar, 23c 12-oz. jar 14c
- Dill Pickles, quart jar 17c
- Red Cherries, 5-oz. bottle 15c
- Peanut Butter, quart jar 30c
- Peanut Krakle, pint jar 22c
- Miracle Whip Salad Dressing, quart 39c; pint jar 27c
- Swans-Down Cake Flour, package 29c
- Sno-Sheen Cake Flour, package 32c
- Cocoa, 2-lb. box 19c
- Noodle, fine cut, 1-lb. pkg. 19c
- Cherries, Red Pitted, No. 2 cans, 2 for 29c
- Fruit Cocktail, P & G, No. 2 can 20c

Canned Fruit Special!

Peaches, Halves or Sliced } 3 for 49c
Italian Prunes }
Sliced Pineapple }

No. 2 1/2 Size Cans—All in Heavy Syrup

White King

for Laundry and Dishes
Large Size Pkg. for
32c

Toilet Soap

White King, 5 Bars for
23c

QUICK NAPTHA

Laundry Soap
10 Reg. Size Bars
23c

CHIPSO

2 Large Size Pkgs. for
35c

Royal Ann White Cherries, so called gallon can 52c
Peaches, so called gallon can 49c

WE ARE CLOSING OUT
All Our Men's Outing Bal Shoes
at \$1.60 pair



VOTE FOR Ralph J. Nickerson FOR District Judge

Second District
Otoe, Cass and Sarpy Counties

Non-Political Ballot

Graduate of Papillion High School, Allegheny College and Creighton Law School. . . . Active sea duty with U. S. Navy during World War. . . . Sixteen years legal experience—employed in law office 1920 to 1922; admitted to bar in 1922. . . . Now serving second term as County Attorney of Sarpy County. . . . Read what editors say about Nickerson:

"In spite of a heavy law practice, Mr. Nickerson finds time to be a leader in civic and community affairs. He is a hard worker, has a keen grasp of the law and will make an ideal District Judge."
—Papillion Times.

"Ralph J. Nickerson has the legal ability, the judgment and the energy required in a District Judge. He is an efficient trial lawyer, and has made an excellent record as County Attorney."
—Springfield Monitor.

"We believe Mr. Nickerson will make one of the best District Judges in Nebraska."
—Gretna Breeze.

FRANK A. PETERSON



For Judge of Supreme Court QUALIFICATIONS

Graduate of University of Nebraska with Phi Beta Kappa honors; University of Nebraska Law College with Theta Kappa Nu honors.

Former County Attorney of Lancaster county, Assistant United States Attorney, City Attorney of Lincoln. Actual practice before the courts over twenty-five years.

Has the necessary judicial temperament. Age 55.

MAKE EASTER DINNER A REAL CELEBRATION!

WITH FOODS FROM
IGA

Look over our wide variety of high quality foods listed here, and make your selections now for that big Easter dinner.

GELATINE DESSERT

3 PKGS. 14c

Free

With each purchase of three packages of IGA Gelatine Dessert, we are giving away an attractive glass mould.

- | | | | | | |
|--|-----|--|-----|--|-----|
| IGA or Swansdown Cake Flour
Large size Pkg. | 25c | Van Camp's Pork and Beans
No. 300 size cans, each | 5c | Soda or Graham Crackers
2-lb. Caddy | 19c |
| Pancake Flour
IGA, Large size Pkg. | 17c | Smoked Salt
10-lb. Tin | 89c | Mustard
Full Quart Jar | 11c |
| IGA Oats
Quick or Regular | 19c | Catsup
Large 14-oz. Bottle | 10c | Staley's Syrup
Dark, 5-lb. Pail | 29c |
| Raisins
2 lbs. for | 15c | Matches
Carton of 6 Boxes | 19c | Santos Coffee
Sweet drinking, Lb. | 17c |

- Tomato Soup also Vegetable, Sm. can 5c
- Grape Nuts Per package 17c
- Hominy No. 2 cans, 3 for 25c
No. 300 Can, 5c
- Baker's Chocolate 1/2-lb. Bar 14c
- Mince Meat IGA, Per pkg. 10c
- Ovaltine Large Size Tins 59c
- Peaches Heavy syrup, No. 2 1/2 15c
- Linko Tomatoes No. 2 1/2 cans, 3 for 25c
- Del Maize Niblets 12-oz. tins, 2 for 15c
- Pecan Meats Fancy Halves, 1/2 lb. 23c

- ### Fruits & Vegetables
- Fresh Green Beans, per lb. 17 1/2c
 - New Texas Cabbage, per lb. 5c
 - Leaf Lettuce, per bunch 10c
 - Fancy Iceberg Solid Head Lettuce, each 7 1/2c
 - New Potatoes, fine, smooth, good size, 2 lbs. 15c
 - Sweet Potatoes, 6 lbs. for 25c
 - Idaho Russet Potatoes, 15-lb. bag 38c
 - STRAWBERRIES, fine, red ripe, box 15c
 - APPLES, Golden Delicious, 4 lbs. for 25c
 - Delicious or Winesaps, 5 lbs. for 25c
 - Cucumbers, each 15c
 - New Beets, bch. 5c
 - New Turnips, bch. 5c
 - New Carrots, bch. 5c
 - New Peas, lb. 20c
 - Tomatoes, lb. 20c

MEAT DEPARTMENT

HAMS

Whole or Half—Per Lb.

27c

Armour's Star - Dold's Niagara - Cudahy's Puritan
Swift's Premium Ham, half or whole, lb. 30c

Swift's Premium Easter Lamb

Legs, lb.	25c	Shoulder Roast, lb.	20c
Loin Chops, lb.	30c	Lamb Stew, lb.	7c

Milk Fed Easter Veal

Round Steak, lb.	30c	Veal Pocket, lb.	15c
Shoulder Roast, lb.	22c	Veal Chops, lb.	25c

Swift's Select Corn fed Shoulder Beef Roast 16c
Mince Ham, per lb. 15c
Ring Bologna, per lb. 15c
Sauer Kraut, fancy bulk, 6 lbs. for 25c
Heinz Dill Pickles, 3 for 10c
Fancy Northern Cat Fish, lb. 30c
Salt Lake Herring, 6 for 25c

- Salad Dressing IGA, Full quart 33c
- IGA Corn Co. Gentleman, 2 for 25c
- Apricots Heavy Syrup, 6 for \$1
- Shrimp, Wet Pack 2 tins for 25c
- Clorox Large quart size 19c
- Mackeral 1-lb. tall tins, 3 for 25c
- Fruit Cocktail No. 1 tall tin 15c
- Early June Peas IGA, No. 2 tins, 2 for 27c
- Beans, Gr. or Wax IGA, No. 2 tins, 2 for 25c
- Beans, Gr. or Wax Linko, No. 2, 3 for 25c
- Oxydol Large Size 21c
- Sal Soda 2 pkgs. for 15c

We Deliver **Black & White** Phone 42