

**GLAMOUR! DAININESS!**  
That Gay Young Feet Demand



Here it is! A flattering one eyelet tie of genuine kid for those who demand the unusual instylish footwear. Decorative two-tone zig-zag stitching and perforations, neatly tailored bow and high graceful heel with trim leather soles. This is one style of many we have to show. All different—for all occasions and dress. Every size in medium and narrow widths.

**SOENNICHSEN'S**

**POLICE TRAIL PROWLERS**

Officers David Pickrel and Roy Stewart were kept busy Tuesday night by reports of prowlers in several parts of the city and apparently two of these are making themselves active, one on the north and one on the south side of the city.

From the reports that the officers have received there is very strong suspicion as to whom the parties may be and the officers are continuing their investigation in the hope

that they may definitely tie up the prowlers with the parties they have under suspicion.

The residents in the different sections where the parties have been reported are also preparing to deal with the matter and those who make themselves a nuisance by their night wanderings are likely to find themselves well shot up.

All kinds of commercial printing done promptly at the Journal office.

**ENJOYS VISIT HERE**

W. O. Reeves, local service man, who has been undergoing treatment at the U. S. Veterans' hospital at Lincoln, was in the city to spend Monday and Tuesday with his family. He was brought home by Mrs. Reeves and brother and this morning was returned to the hospital. Rev. Troy taking him back and he was accompanied by Mrs. Reeves who looked after the care of the husband until reaching the hospital.

**VISITS PARENTS HERE**

Robert L. Hartford, of Kansas City, Missouri, was a visitor here over Sunday and today at the home of his parents, Mr. and Mrs. C. E. Hartford and the many old friends. Mr. Hartford is now located in Kansas City with the Hall Brothers Co., a large manufacturing company of stationery and novelties, one of the largest concerns of its kind in the middle-west. He is returning home this evening.

**QUEEN STANDINGS**

From Wednesday's Daily  
Count of the votes made today show the following:  
Lois Troop ..... 226  
Ruth Ferrie ..... 212  
Helen Schultz ..... 112  
Gertrude Vallery ..... 90  
Lois Giles ..... 48  
Virginia Samek ..... 25  
Bette Bulin ..... 15  
June Kell ..... 14

Journal ads bring you news of timely bargains. Read them!

**HERE FROM CALIFORNIA**

Mrs. Annabel Evans, of Los Angeles, California, is visiting at the home of Mrs. W. H. Rainey and other relatives in this section. Mrs. Evans is eighty-one years old and has made the trip to Chicago and northern Illinois, eastern Iowa and Nebraska. She will visit in Montana and Oregon before returning to her home.

**VISITS IN CITY**

Roy James and daughter, Betty, came over from their home near Clarinda, Iowa, Sunday to enjoy a visit at the home of Miss Emma De Hart and Ward Whelan, their aunt and uncle. The James family are former residents here and enjoyed meeting the many friends while in the city.



Fine Quality Fur Felt  
Snap Brim

**HATS**  
\$2.95

A very smart new style hat with a sand-blast plaid decoration on brim and crown. You will like these.

**Men!**

Come in and see what the well-dressed men will wear this fall.

**Basket Stripe**

**Ties**  
Wide and narrow basket weave stripes in choice of six new color combinations! Hand made silks.  
**69c**

**Fancy Hose**  
Checks and Stripes! Smart new colors for Fall wear in these strong socks. You'll want several pair.  
**25c**



Young Men's  
**Corduroy Slacks**  
\$2.98

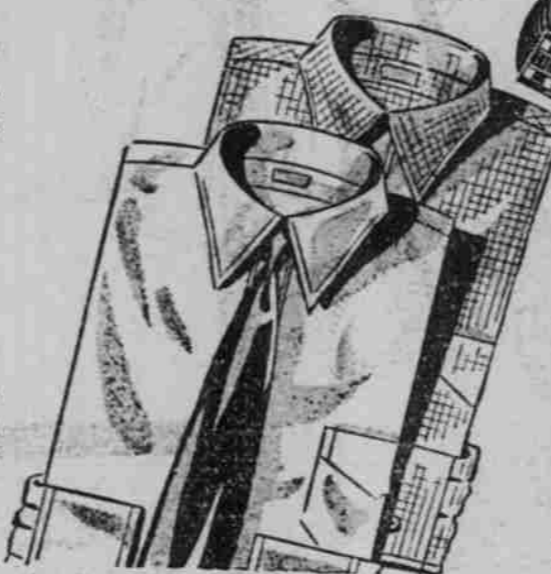
Wide waist band, 24-in. bottoms. Powder Blue, Rust, Brown, Grey, Maroon, Tan and Green.

**Dress SHIRTS**

Popular new zig-zag stripe in blue, tan or green on white vat dyed percale.  
**98c**

**Beau Brummel SHIRTS**

with the new collar—always neat—will not wilt—no starch—easy to iron. New Fall patterns.  
**\$1.35**



**Mullen's Market**

THESE PRICES GOOD FRIDAY - SATURDAY

- Queen Olives, 10-oz. .... 23c
- Horseradish, pure, extra strong ... 10c
- Chili, P & G, 2 cans ..... 19c
- Cream of Wheat, large pkg. .... 25c
- Majestic Toilet Paper, 1000 Sheet. . 5c
- Shrimp, Dry or Wet pack, can ..... 15c
- Green Beans, No. 2 cans, 3 for ..... 25c
- Tomatoes, No. 2 can, 3 for ..... 25c
- Hominy, No. 2 1/2 can, 2 for ..... 17c

**Butter-Nut Salad Dressing**  
**1000 Island - Relish Spread**

AT FOLLOWING SPECIAL PRICES

Quart, 35c Pint, 21c 8-oz., 15c

- Macaroni or Spaghetti, per lb. .... 10c
- Economy Coffee, lb. .... 19c
- Butter-Nut Coffee, lb. .... 30c
- Balloon Soap Chips, 5-lb. box. .... 35c



**"Safety-Sealed"** SPECIAL PRICE  
1-lb. can ... 30c  
2-lb. can ... 59c  
The Quality Coffee of America!

**TREE TEA**

- ORANGE PEKOE  
1/2-lb. Pkg. .... 35c 1/4-lb. Pkg. .... 18c
- GREEN JAPAN  
1/2-lb. Pkg. .... 29c 1/4-lb. Pkg. .... 15c

**FRESH MEATS**

- Plate Boil, per lb. .... 10c
- Beef Roast, lb. .... 17c
- Sirloin Steak, lb. .... 25c
- Pork Chops, lb. .... 28c
- Leg of Lamb, lb. .... 25c
- Lamb Roast, lb. .... 20c
- Lamb Chops, lb. .... 25c
- Chili Brick, lb. .... 20c
- American Cheese, lb. .... 23c

NOW. Take Advantage of Low Summer Prices on



**Blankets**

**JOIN OUR BLANKET CLUB!**

It's as easy as A B C! Just select the blankets you want. Pay only 25c now and 25c per week, and when wintry winds blow again, you'll have a warm new blanket—all paid for!

**72x84-Inch Part Wool Double Blankets**

**\$2.89** 3-Inch Sateen Binding

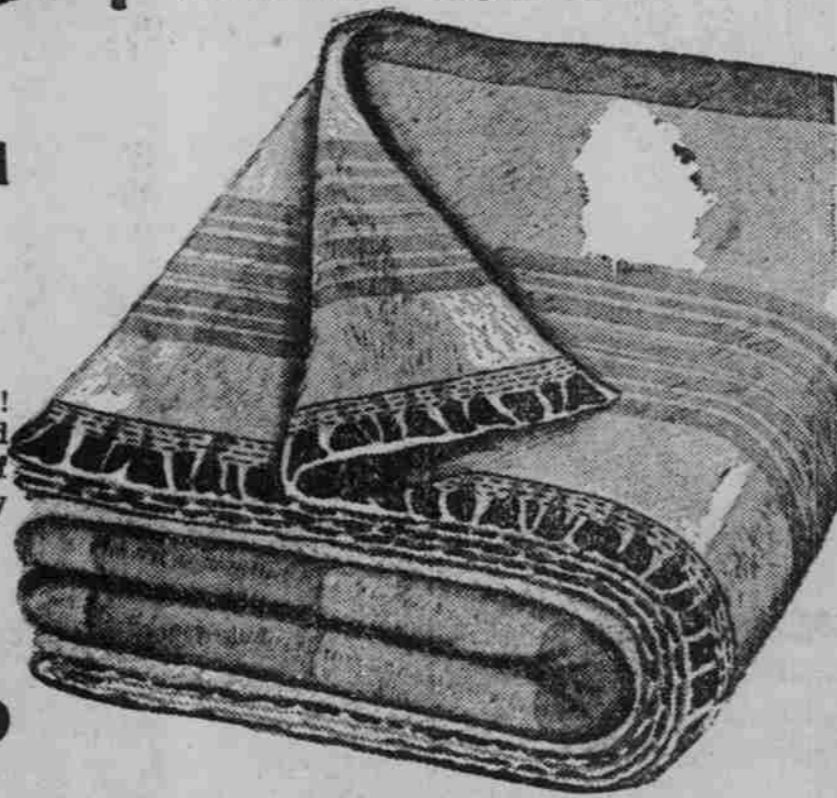
Not less than 5% wool in these blankets! If you want a lot of beauty, durability and warmth for your money, you'll want one of these! Colors to harmonize with every bedroom!

**Cotton Double Blankets**

70x80 inches, warm fleecy nap and beautiful pastel plaids, shell stitched ends. **\$1.49**

**PLAID COTTON SINGLE BLANKETS**

70x80 inches, same quality as double, but single. Beautiful plaids with shell stitched ends. Only **75c**



**SOENNICHSEN'S**

The Largest Store in Cass County, Plattsmouth, Nebr.

**School days are here**



School days... the good old golden rule days are here again. It takes a lot of energy to go to school and learn all about the three R's; and these foods listed here are just what growing children need most.

- CREAM CEREAL** PKG. 17c
- CORN FLAKES** PKG. 9c
- MALTED MILK** PKG. 35c
- COOKIES** . . . 2 LBS. 25c
- JELLY DROPS** . . . LB. 10c

**BAKER'S BREAKFAST COCOA**  
CAN 10c

**PURE CANE SUGAR**  
10 LBS. 62c

**PURE RENDERED LARD**  
2 LBS. 45c

**PURE CREAMERY BUTTER**  
LB. 27c

**MAXWELL HOUSE COFFEE**  
27c

**FANCY CORN FED RIB BOIL**  
Cut from Yearling Stock Special, per Lb. 12 1/2c

**Shoulder Roast**  
High Quality, Lb. 20c

**Flank Steaks**  
Tender, Juicy 25c

**SWIFT'S GENUINE Lamb Steaks**  
20c

- KRAUT** Fancy, No. 2 1/2 Can. .... 9c
- CORN** Finest, No. 2 Can, 3 for 25c
- PEAS** Finest, No. 2 Can, 2 for 25c
- TOMATOES** No. 2 Can. .... 3 for 25c
- SARDINES** Domestic Oil. .... 6 for 25c
- CRACKERS** Soda or Graham, 2-lb. . 19c
- Peanut Butter** Large Jar ..... 33c
- Pork and Beans** Libby's or Van Camp's. . . 5c
- MILK** Caroline, Tall. .... 3 Cans 17c
- CHOCOLATE** Baker's Premium, 1/2-lb. Hershey's, 6c. 14c
- Pancake Flour** IGA Brand, 3 1/2-lb. Pkg. 17c
- WHEATIES** 2 Pkgs. for. .... 23c
- CRISCO** 3-lb. Tin ..... 62c
- SOAP** Swift's White. .... 10 Bars 25c
- OAKITE** 2 Pkgs. for. .... 25c

**Fruits and Vegetables**

**POTATOES**  
15 lb. 21c

**FIRM, RIPE BANANAS**  
4 LBS. 25c

**HEAD LETTUCE**  
7 1/2c

**APPLES**  
8 lbs. 25c

**Black & White**