

# \$250 PER ACRE FOR SALE!

THE JACOB VALLERY, JR. IMPROVED HALF SECTION

3 miles west of Plattsmouth on the Louisville road. This farm will be sold very soon as I already have several buyers figuring on the deal.

Better buy from me now at \$250.00 per acre than to let the other fellow beat you to it and then have to pay him a bonus to get the farm.

It is a fact that often when a farm which has been for sale for a number of years is at last sold to some outsider, the neighbors who have always intended to buy it "as soon as they could get around to it," now rush in and offer the new owner more money than he paid for it, with the result that the farm changes hands one, two or possibly three times more within a short time, each sale at an increased price.

This farm may go the same way. At \$250.00 per acre you can keep this farm and have one of the best farms in the best location in Cass county, or sell it in 60 days at a good profit.

Don't neglect the opportunity to buy this good half section so well located. Terms to suit purchaser.

**T. H. POLLOCK,**

Phone No. 1 Plattsmouth

## WILL SUBMIT NEW SCHOOL DISTRICTS

Re-Districting Work Completed and Outlined Boundaries Ready for Commissioners' Approval

From Thursday's Daily. The office of the county superintendent has completed the work of preparing the maps of the new school districts of the county which have been readjusted since the hearings on the proposed consolidated districts and the readjusted districts will be submitted to the board of county commissioners in April for their consideration.

Quite a number of changes were necessary from the districts as first proposed and the commission that

had the work of formulating the proposed consolidated districts has made the new districts as near what was desired by the patrons as possible.

Several new districts were added as the result of the hearings, both in the eastern and western portions of the county and these with other minor adjustments will be laid before the commissioners.

Rev. A. F. Ploetz, of Weeping Water, departed last evening over the Burlington for Derby, Iowa, at which place he is to preach tomorrow in the Presbyterian church. Mrs. Ploetz remained in this city, where she is caring for her sister, Miss Louise Gorder.

Glen Perry, of near Murray, was among those going to Omaha this morning to look after some matters of business.

## READJUSTING TAXATION ASSESSMENTS

ON TRAIL OF RENT PROFITEER—INCOME TO BE MADE BASIS OF VALUATION.

CITY PROPERTY TO BE RAISED

Instructions Go Out from Secretary Bross to County Assessors Over the State.

From Saturday's Daily.

W. H. Osborne, Jr., secretary of the state board of equalization, under direction of Secretary of Finance Bross, is sending out instruction to all county assessors that they shall, in fixing the value of city and town property ascertain the amount of the income, and take this as the basis of valuation. In this way, it is hoped to extract from the rent profiteer some of the excesses he has been taking. The instructions are as follows:

"We desire to call your attention to the great importance of obtaining, to some degree of equality, an assessment on your city property that will harmonize with the real estate assessment.

"City property has advanced in comparatively the same degree that real property has advanced, and in fixing the valuation of your town lots and real estate in the corporate limits of your cities, consideration should be given to income derived from the property in the way of rentals.

"Particularly is this true of lodging houses, apartment houses, dwelling houses and in fact business concerns who are holding long time leases on popular and prominent locations.

"Rentals have advanced materially in the last four years and the attorney general has ruled that we have a right to consider this in determining and fixing the valuation for assessment and taxation.

"In all cases where city property is occupied by others than the owner every effort should be made to secure the rental or other income from the property, so that this information can be used as one of the items taken into consideration by the assessor in fixing the actual value of the property.

"The impracticability of the use of comparative sales value of city property compelled us to forego the compilation of an abstract of this class of property as we did real estate, but we desire to impress upon the assessing authorities that the same zeal and effort should obtain in fixing the value of all kinds and classes of property, to the end that each individual, firm or corporation shall be justly and equitably assessed."

County assessors are directed, in another letter to get after intangibles. One of these is chattel mortgage. Attention is called to the section of the statutes that makes it

the assessors duty to examine the records of the deeds and county clerk and add all omitted property not otherwise assessed. Mr. Osborne says:

"Where the chattel mortgage runs to the cashier of a banking institution or other concern that has been assessed separately, you should make inquiry as to whether or not the mortgage is a part of the assets of such bank or other institution, and, if you find that the mortgage is the property of the individual, or that the mortgage is the product of eastern or private capital, you should list the same for taxation, if the same is of record on the 1st day of April, or sufficient proof is not submitted to satisfy you that the obligation has been paid."

## SCHMADER WINS WRESTLING MATCH

Louisville Man Pins Shoulders of Tom Ray, of Omaha to Mat in Best 2 of 3 Falls.

From Saturday's Daily.

A large number of the wrestling enthusiasts of the city gathered at the Coates hall last evening for the wrestling match scheduled between Frank Schmader, of Louisville, one of the best boys in the wrestling game in this portion of the state, and Tom Ray, of Omaha, the result of the match being that Schmader proved the winner by annexing two of the three falls.

The opening fall of the match was won by Ray in eleven minutes, the head scissors and arm lock being the cause of the downfall of the Louisville lad and in this fall Ray demonstrated his fastness and skill although at a handicap owing to the great strength of the Louisville wrestler.

The second fall required thirty-three minutes for Frank to pin the shoulders of Ray to the mat and for this fall the famous toe hold was used by Schmader to accomplish the downfall of the Omaha lad.

The third and final fall came unexpectedly at the close of eighteen minutes of interesting and fast mat work as both men struggled for the fall. Ray was resting on the back of Schmader with a partial body scissors and neck hold when the Louisville man rose suddenly with Ray, throwing him backwards and as he fell Schmader turned quickly and pinned him to the mat, as Ray was evidently suffering from the quick fall to the mat and the referee, Lee Fickler, announced that the Louisville man was the winner as Ray was unable to combat the aggressive wrestling tactics of Schmader.

In the preliminary Lee Fickler was the winner over Harry Best of Omaha, pinning him down in eleven minutes with an arm lock and head scissors that forced the Omaha man to the mat and Lee demonstrated that he has lost none of his skill in the wrestling game, although this is the first match he has been in for some time.

## ANOTHER PIONEER HAS PASSED AWAY

Mrs. Charles Kraft, of Louisville, Dies After Lingering Illness from a Cancer.

From Saturday's Daily.

The death of Mrs. Charles Kraft occurred at the family home in the east part of town on last Monday, March 1st, 1920, after a lingering illness of more than a year with cancer. During her illness, she bore her suffering with great patience and never failed to express her grateful and kindly nature to her family who surrounded her with the best of medical attention and loving care.

Mrs. Kraft was a member of the Evangelical Lutheran church from childhood and ever found great comfort and solace in her religion, which she lived in her every day life. Her funeral occurred Thursday afternoon at two o'clock from the church of which she was a member, her pastor, Rev. T. Hartman officiating. A short service was held at the home before the funeral party proceeded to the church, and the remains were laid to rest in the family lot in the Lutheran cemetery.

Mrs. Kraft's maiden name was Wilhelmina Rau. She was born in the province of Posen, in Germany, August 17, 1848. She came to America in 1872 and in the same year, on June 8th, she was married to Charles Kraft, in Wisconsin, where they lived for two years. In the fall of 1874 they came to Cass county, Nebraska, and settled on the old home place three miles south of Louisville.

Here they lived a happy and prosperous life, attended with the ups

and downs of the pioneer, until the year of 1904, when they decided to retire from the farm, and purchased a comfortable home in Louisville, where they have since resided.

Mrs. Kraft was a quiet and unassuming person of a kind disposition and was greatly beloved by her family and large circle of friends. Her death leaves a vacancy in the home that never can be filled, but the memory of the devoted wife and mother will remain to cheer and bless her family.

She leaves, besides the aged husband, four sons and three daughters. They are William, Charles, Herman, Richard, Mrs. Henry Vogler and Misses Martha and Idella Kraft. Three sons preceded the mother in death. She also leaves a half brother, Rudolph Rau, of Atchison, Kansas, and one half brother and two sisters in Germany. Her only brother and sister died in this country many years ago, so that she has no other near relatives in this country. At the time of her death, she was 71 years, 6 months and 14 days old.—Louisville Courier.

## TO ASSESS RAIL ROAD TERMINALS

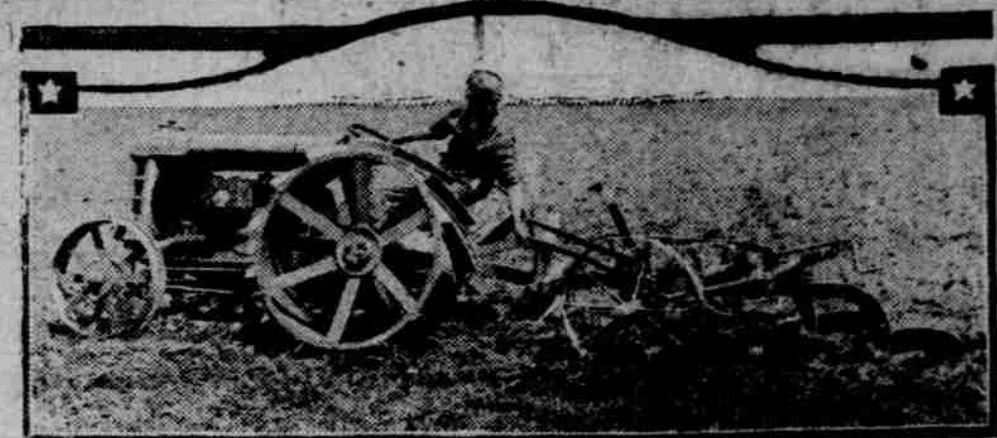
Return of Roads to Private Ownership Sufficient to Return Them to Tax-Paying Status.

If the state board of equalization has its way about it the state will once more take on the task of assessing the terminals of the various railroads of Nebraska for the purposes of taxation. Last year the government was running the railroads, and it made the state keep its hands off. Instructions are now going out to county assessors to include these valuations even where they are not returned and the state board will decide the matter later. The letter to assessors reads:

"Last year we were not permitted to assess the material and supplies of the railroad companies in connection with the terminal assessment, owing to the fact that the government took the position that all such material and supplies that were on hand at that time, were purchased by the United States government, and therefore was not assessable.

"We are unable to state definitely at this time just what the attitude of the state board will be regarding this year's assessment of this class of property, but it occurs to us that, inasmuch as the several roads have been turned back to their individual owners, the government will debit the companies' books with a like amount that they were credited with at the time that they were taken over, and therefore we have the right to such assessment.

"At any rate this matter will be up for consideration before the state board and we suggest that where the companies fail to include this property in their return to you for terminal tax assessment, that you carry out an assessment on such property and return it to this department in



## A tractor that will fit your farm—the Fordson

YOU can make your farm produce more—at less cost—and with less effort on your part—by using the Fordson tractor. Not only will it help you prepare your land and cultivate the crops, but it furnishes power for many other farm jobs.

The Fordson tractor is the result of long study of farming conditions and it has proved a success. Burns kerosene—easy to operate and care for—practically trouble-proof.

## There's an Oliver No. 7 Plow for your Fordson

Just as the Fordson tractor gives ideal power, the Oliver plow means ideal plowing. It is scientifically designed for tractor service—and is backed by a half century of experience in making plows. It buries all trash and weeds at the bottom of the furrow—maintains an even depth of furrow—and is controlled from the tractor seat.

Come in and let us show you this remarkable farm team.

**T. H. Pollock Garage,** Plattsmouth, Neb. Telephone No. 1

addition to other property of your local terminal assessment.

"If, for any good reason they are not assessable we can then strike it off, and if they are liable we will then have the figures and the data."

## TO ACCEPT NEW CALL

Rev. A. F. Ploetz, who was for a number of years located in this city as the pastor of the German Presbyterian church, but who later preached at Scotland, South Dakota and Weeping Water, has been called to new scenes of activity and will take over the pastorate of the Presbyterian church at Derby, Iowa, where he will preach his first sermon to his new congregation tomorrow. Mrs. Ploetz has been detained in this city where she is caring for her sister, Miss Louise Gorder, who has been very seriously ill for the past week or ten days.

## LOUISVILLE BRIDGE CLOSED

The Louisville automobile and wagon bridge will be closed commencing Monday and will remain closed to travel for the next three weeks as the bridge is to be given a thorough overhauling and repairing and will be placed in the best of shape for travel during the coming summer. In the meantime the Plattsmouth bridge will be the only

means of crossing the river between the southern portion of the state and Omaha.

Attorney C. E. Tefft, of Weeping Water, was in the city today looking after his practice in the district and county courts for a few hours, returning home this afternoon in order to vote at the special light franchise election being held in that city today.

Wall Paper, Paints, Glass, Picture Framing.—Frank Gobelman.

## For Sale!

Dodge 1918 Touring.....\$750.00  
Buick 1917 Touring.....\$650.00  
Ford 1920 Touring.....\$650.00

and Several Other Good

1916, 1917 and 1918 Fords

New and used cars sold on payment plan—one third down, balance in 12 or less equal monthly payments.

**T. H. POLLOCK GARAGE** Phone No. 1 Plattsmouth

## Notice to Ford Owners!

How are your lights? Does your motor crank hard? If you have these troubles your magneto is weak. A new magneto would cost you \$20.00 installed. We recharge your magneto without taking your motor down for \$5.00.

Come In and Let Us Explain!

**W. W. WASLEY,**

Garage Phone 650

House Phone 502

**McCall's Spring Patterns**

*And Piece Goods For Them*

No. 9375—Suit Coat, natty Norfolk model, small patch pockets above the waistline and larger ones below it. Just right for walking, motor-ing and sports wear.

No. 9193—Tailored Coat, mannish English collar and slash pockets. The lengthened straight lines make this model particularly becoming to large women.

No. 9367—Two-Piece Skirt, practical model with slash pockets and fancy belt.

0375-9367 We are showing beautiful Coatings appropriate for these garments. Prices unexpectedly low.

0193 9367

**H. M. SOENNICHSEN**

# Ford

THE UNIVERSAL CAR

The Ford Sedan is the favorite family car, seats five comfortably. While an enclosed car with permanent top, it has large windows, and may in a minute be changed to a most delightful open car with always a top protecting against the sun. In inclement weather it is a closed car, dust-proof, water-proof, cold-proof. Finely upholstered. Equipped with electric starting and lighting system and demountable rims with 3 1/2-inch tires all around. A real family car. Anybody can safely drive it. It has all the conveniences of an electric car with the economy which goes with Ford cars, low cost of purchase price, small cost of operation and maintenance. Won't you come in and look at it?

**T. H. Pollock Garage**  
Phone No. 1 Plattsmouth, Neb.