

# \$1.00 per Bushel

## Another Car of Red River Early Ohio Potatoes

arrived and will be sold at \$1.00 per bushel

16 gallon keg of Kraut \$2.25

12 pounds \$1.00

12 pounds fanch dried peaches \$1.00

### H. M. SOENNICHSEN,

The Daylight Store, : : : : : Phone 52 and 53

## TORPEDOES SINK FOUR MORE SHIPS

British, Spanish, Norwegian and  
Dutch Suffer in Last Twenty-  
four Hours.

### THERE IS ONLY ONE LIFE LOST

London, April 6.—Four more vessels, three of them neutral ships, have been sunk in the past twenty-four hours with the loss of one life.

The British steamer Bendow from Liverpool was sunk with the loss of one life.

The Spanish steamer Viga was torpedoed in the Bay of Biscay, after the crew had been allowed to take to the boats. The Spanish sailors were picked up by a British steamer twenty-four hours later and taken into Gibraltar.

The Norwegian steamer Arena was sunk in the Cattegat. Her crew was saved.

The Dutch schooner Elzina Helena was torpedoed in the North sea. The crew was landed at Noordhinder.

## 1,000 FARMS OF 100 ACRES EACH

Six Nebraska Railroads Own Much  
Land in the Right of Ways.

If all the land used by six Nebraska railroads for right of way purposes were put into a single strip one mile wide, it would reach from Lincoln to Omaha in one direction and from Lincoln to Hastings in the other, a total distance of 165 miles.

This would make 1,000 farms of 100 acres each and have enough left over for half a dozen big ranches. If it were all farmed to wheat and the average production were 25 bushels to an acre, it would yield enough of that cereal to fill 2,640 freight cars with a capacity of 1,000 bushels each.

If alfalfa were raised on this acreage devoted to right of way purposes, it would produce, at the rate of three tons per acre, a yearly crop of 316,000 tons.

Two contending armies using all the modern paraphernalia of war could maintain trench systems extending for a distance of over 100 miles and keep several million soldiers busy within the area which represents the total right of way acreage of the six railroad companies referred to.

These ideas are suggested by figures in the possession of Secretary Bernacker of the state board of equalization, taken from reports filed by the Burlington, Union Pacific, Northwestern, M. & O., Rock Island and Grand Island roads. The Missouri Pacific is not included because its figures are not complete.

Altogether, the right of way area for the six roads amounts to 105,591 acres, or approximately 165 square miles. This is equal to one-half the total area of Sarpy county and about 29 per cent of the acreage of Lancaster county. It is divided as follows: Burlington, 45,976 acres; Union Pacific, 30,544; Northwestern, 19,210; M. & O., 4,191; Rock Island, 3,616; Grand Island, 2,054.

The figures were secured from the railroads in order to compare them with reports furnished by county assessors in making up the railroad tax valuations for the current year.

## LATE REPORTS INSIST VILLA WAS INJURED

El Paso, Tex., April 6.—The following statement by General Gavira, who claims it is a telegram from Carranza, confirms the report that Villa has been injured.

"I have confirmed from witnesses, among others, one of my own soldiers who was made prisoner at Namiquipa, that the bandit, Villa, was wounded in the knee so that he was unable to mount his horse."  
Another message to Gavira from Luis Gutierrez, Carranza's field commander, says: "Villa is fleeing, seriously wounded, and he has divided his main body into several small bands."

Make your dates to attend the dance at the German Home on next Saturday evening as this will be one of the pleasant dancing events of the season.

Just received another large shipment of new patterns in Wall Paper. Same old price. At the Wall Paper and Paint Store, Hotel Riley Block, Frank Gobelman.

Resided Here Nineteen Years Ago.

Mrs. P. Ellingson is visiting her many friends in this city for a few days. Mrs. Ellingson and family resided in this city about nineteen years ago, the family removing to Phoenix, Arizona. At the present time Mrs. Ellingson is making her home at Salt Lake City, Utah, but during the past winter months and on account of poor health has been visiting relatives and friends throughout the eastern and western part of Nebraska. After a few days' visit here Mrs. Ellingson will go to Minnesota for an extended visit with relatives and will then return to this city for a more extended visit.

### TAKEN WITH CROUP

"A few nights ago one of my patrons had a child taken with croup," writes M. T. Davis, merchant, Bears-ville, W. Va. "About midnight he came to my store and bought a bottle of Foley's Honey and Tar Compound. Before morning the child was entirely recovered." Many such letters have been written. For sale everywhere.

### WHEN IN OMAHA VISIT THE Gayety "Omaha's Fun Centre"

Grand New Show MUSICAL BURLESQUE  
EVERY WEEK  
Clean, Class Entertainment. Evening Shows, Act  
LACES UP! DANCE DAILY  
DON'T GO HOME SAYING  
DIDN'T VISIT THE GAYETY

## T. H. POLLOCK

Real Estate  
Insurance  
Farm Loans

### Buick-Dealer

Office and Salesroom  
**RILEY BLOCK**  
Tel. No. 1. Plattsmouth

# Seeds THAT GROW

Rakes, Hoes, Spades, Wheelbarrows and other garden tools on display at our store, are the things that makes your garden and reduces the cost of living.

## Bestor & Swatek

Main Street, Plattsmouth, Neb.

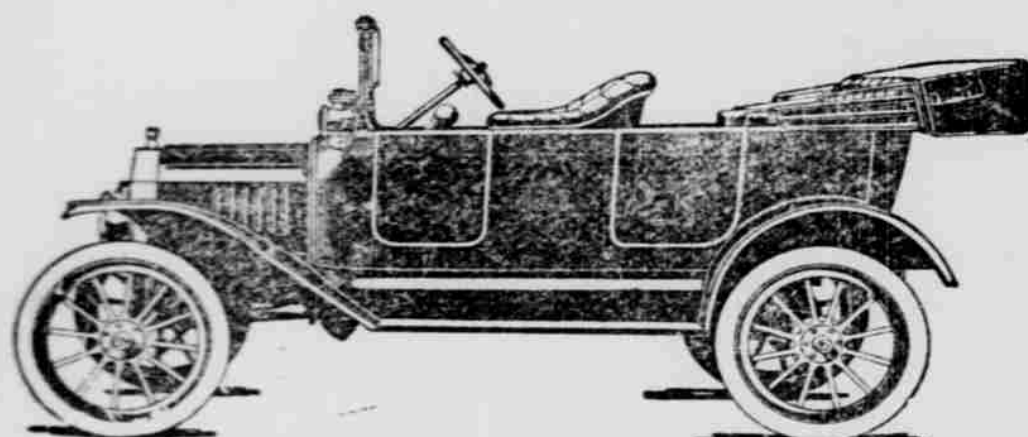
## Red River Early Ohio - Seed Potatoes - \$1.00 Per Bushel

Fancy Dried Peaches 7c a pound; 4 cans corn 25c; 3 large cans Tomatoes 25c; Corn Flakes 5c packages.

Granulated Sugar, 100 lbs for \$7.45, at

## L. B. EGENBERGER'S

## The Reliable FORD!



Runabout at \$390 Touring Car t \$440

Prices F. O. B. Detroit

W. W. WASLEY, Agent

Headquarters Wetenkamp Building, Opposite  
Court House.

We invite our friends in to look over our cars.

## Attention, Veterans!

For thirty days I will  
made a photo FREE  
of all soldiers of the  
Civil War, who will  
come to the studio.

Right Face, March!

## Leonard's Studio

### TO THE DEMOCRATS:

There will be a meeting of the Wilson and Marshall club at the Council Chamber tonight (Thursday) at 8 o'clock p. m., for the purpose of making arrangements for the Bryan meeting here on the evening of April 12.  
By Order of the President.

### .. INFORMATION FOR WOMEN

Housework is trying on health and strength. Women are as inclined to kidney and bladder trouble as men. Aching back, stiff, sore joints and muscles, blurred vision, puffiness under eyes, should be given prompt attention. Foley Kidney Pills restore healthy action to irritated kidneys and bladder. For sale everywhere.

### Epworth League Notice.

There will be a business and social meeting of the Epworth League in the parlors of the M. E. church Thursday evening at 7:30.

### Social Dance Saturday.

The Social club will give another of their old fashioned dances on Saturday evening at Coats hall where all the old time dances and old time music will be given. Everyone invited to attend.

I sell lots of Pratt's Chick Food and stock remedies. C. E. Hartford.

### How's This?

We offer One Hundred Dollars Reward for any case of Catarrh that cannot be cured by Hall's Catarrh Medicine. Hall's Catarrh Medicine has been taken by catarrh sufferers for the past thirty-five years, and has become known as the most reliable remedy for Catarrh. Hall's Catarrh Medicine acts thru the Blood on the Mucous surfaces, expelling the Poison from the Blood and healing the diseased portions.  
After you have taken Hall's Catarrh Medicine for a short time you will see a great improvement in your general health. Start taking Hall's Catarrh Medicine at once and get rid of catarrh. Send for testimonials free.  
F. J. CHEENEY & CO., Toledo, Ohio.  
Sold by all Druggists, etc.

FOR SALE—Blue Grass sod in any quantity. Vacant lots to rent for garden purposes. Inquire at the office of R. B. Windham.

### Fight the Enemy

With a Cinch Gopher Trap. Sold by  
W. T. RICHARDSON.

4-4-tfd

4td2twkswkly

## -BIG SOCIAL DANCE-

AT THE

## -German Home-

## Next Saturday Evening,

APRIL 8th

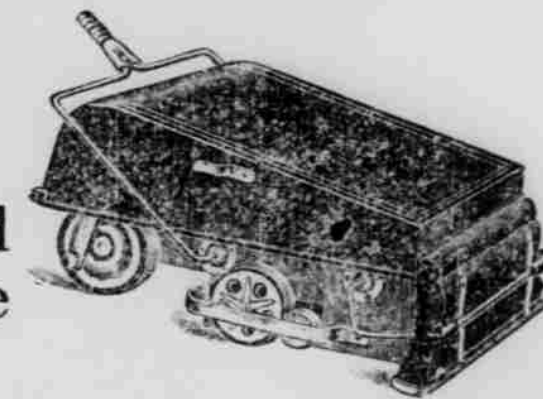
Everybody Cordially Invited

MUSIC BY PLATTSMOUTH ORCHESTRA

## The Hugro DeLuxe Combination

### Vacuum Sweeper!

Ten reasons why you should  
buy this sweeper in preference  
to any other:—



- 1st—Height only six inches, sweeps and cleans successfully under all modern furniture.
- 2nd—Finished in beautiful mahogany; 3 coats baked on.
- 3rd—Nozzle hinged to the body of the sweeper. Impossible to take off or put back wrong.
- 4th—Vacuum box made of steel air tight and no warping or cracking.
- 5th—Dust bag heavy mercerized cloth mounted on steel frame with thick rubber gasket and wide opening at frame; easily emptied.
- 6th—Litter pans—wide and deep and made of steel. Both dump with one push of lever.
- 7th—Nozzle shoe made of steel and nickle plated. Running machine over tacks and door sills will not dent this shoe.
- 8th—Bearings—sturdy auto rollers that wear a lifetime and assures machine operating smoothly and easily all the time.
- 9th—Design of machine is novel and particularly attractive. (covered by patent)
- 10th—The big feature Wonder Worker Automatic Brush adjustment. This brush which is 9 inches in length is located between and operated by four small rubber tired driving wheels and is equipped with an automatic spring, made of genuine piano wire. This spring tension on the brush, which is entirely independent of the four driving wheels, gently holds the brush in position for perfect sweeping on long, short or medium nap rugs or carpets. This brush movement is entirely automatic and there are no levers to be moved or adjustments to be made on any part of the machine to do perfect sweeping.

This is positively the only combination vacuum sweeper ever invented having a brush which automatically adjusts itself to sweep perfectly on all kinds of floor coverings.

Come in any day we'll be glad to demonstrate.

Model T—sells for \$6.00

Model Y—sells for \$7.50

## E. G. DOVEY & SON

SERVICE

QUALITY

VALUE