

HERE IS SMALL INVESTOR'S BIG OPPORTUNITY!

There is many a man who would long ago have invested in a good farm or ranch if he had had a partner who knew about cattle and hogs, how to raise alfalfa and corn and management of agriculture. Many practical investors would be on a ranch if they could get that kind of a man in partnership. That's exactly what the S. & F. Stock Co. wants to be—your partner in an established farming and cattle raising enterprise. The "S. & F." has a ranch of 4,000 acres in Morrill County and a large farm in Cass County. Unique and highly successful methods are employed and we are getting results in clean profits. That is the reason we want you as partners.

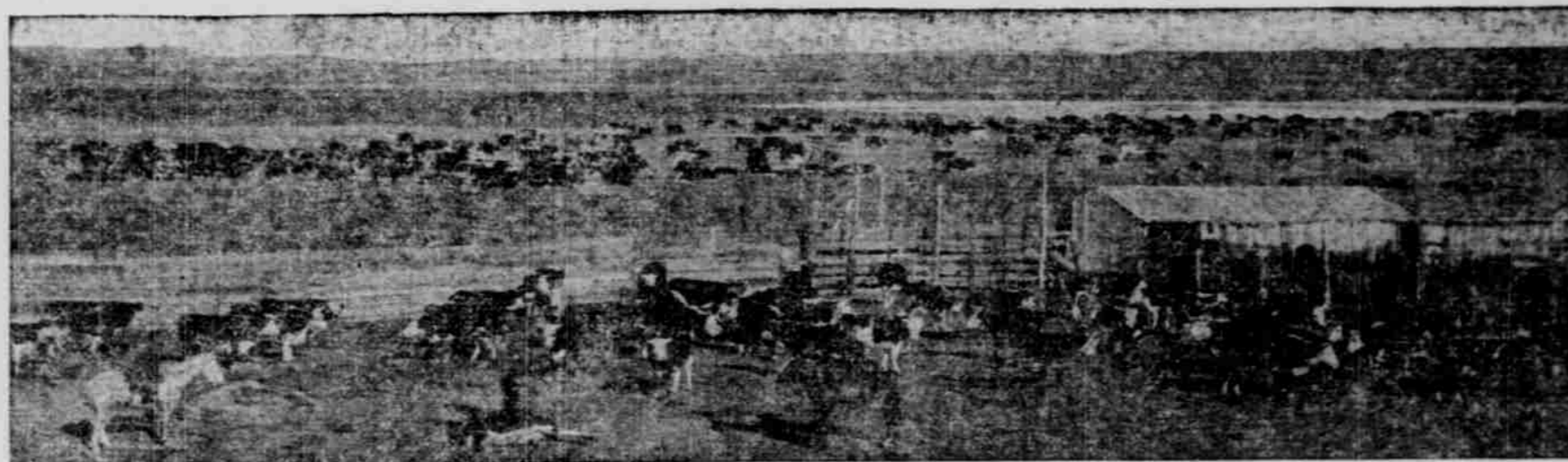
S. & F. Stock Co

Capital \$500,000.00
Shares, \$100.00 Each

OFFICERS AND DIRECTORS
EDW. FITZGERALD, Pres. HENRY R. GERING, Vice-Pres.
FRANK E. SCHLATER, Sec'y and Treas. SAMUEL ORLOFF
JAS. FITZGERALD

The profits in hogs, cattle and alfalfa are yearly increasing. We have adopted a system of hog and cattle feeding and alfalfa raising that produces marketable products with the minimum of expense. The men who have incorporated this company have done so after years of practical experience and investigation, which makes failure impossible. The Fitzgerald Brothers have been handling cattle, hogs and horses for many years---buying, fattening and selling. They believe in greater profits from the operation of ranch methods on a wholesale plan. The ranch has nothing showy, but has a vast fertile workable territory.

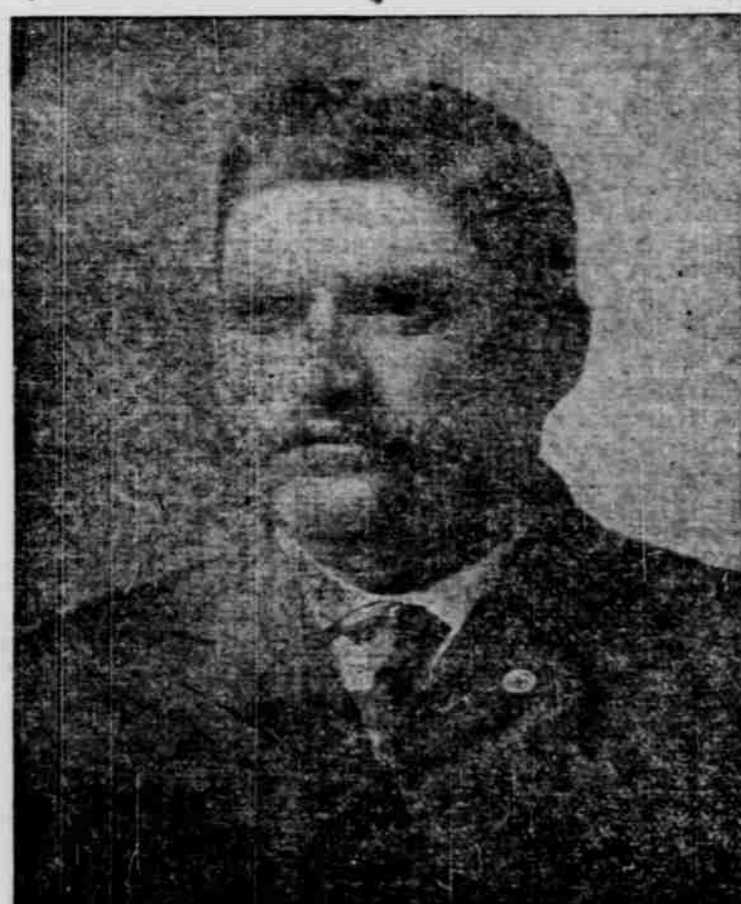
Pay one-fifth in Cash and rest in monthly installments after you have investigated and assured yourself of this Clearly Safe Investment.



Cattle on the Ranch, Morrill County

It is a Chance for Small Capital to get share of big Profits in an Established Ranch and Cattle Business. There will be Safe and Secure Return in Profits.

A Guaranteed Eight Per cent Stock Means Comfort in Old Age



Edward Fitzgerald, President

The S. & F. ranch has been doing a lot of big things in a small way. Now we want you to aid in doing them in the biggest way.



This farm is well adapted to the feeding of hogs and quite a bunch are being fed there all the time. Everyone knows that there are big profits in running hogs with cattle and it is plain to see that there is always a profit in corn, cattle, hogs and alfalfa when well worked out. The drainage of the feed yard is good, and this is important. In all of the years of hog feeding at this farm there have been no cases of hog cholera. The water supply is excellent, a large, deep well supplying abundance of water which is pumped to a tank on a hill by either windmill or engine and then distributed by pipes to the various yards.

Our Ranch is Close to Your Home--You Can Investigate.

You are invited to share in the profits of the most profitable ranches in Nebraska. That is the gist of the "S. & F." offer to small investors when you are offered shares in our ranch proposition at \$100 per share. It is not often that one has a chance to get an 8 per cent return on his money, but this is one chance that is guaranteed by successful men, practical and conservative business men who believe firmly in profit-sharing.

A SUCCESSFUL FARM

One of the most profitable ranches in Nebraska is that known as the "S. & F." Ranch in Morrill County owned by Schlater & Fitzgerald Bros. of Plattsmouth, Nebr. The methods employed in operating this ranch have been highly profitable. In addition to the ranch of more than 4,000 acres in Morrill County, the company has a large farm in Cass County. Cattle are run upon the range on the western ranch and then brought to the Cass County farm for the finishing touches, with liberal feeding of corn and alfalfa. From this farm to the South Omaha market is only 18 miles.

THOROUGHLY TRIED

The plan of operation has been thoroughly tried and has brought 30 per cent return on a capital of \$100,000. Now we want to branch out and enlarge this business. We want a ranch large enough to run off 5,000 fat cattle every year. It is your chance.



Frank E. Schlater, Treasurer

Would you like to own such a farm as this for your own? Now opportunity is yours to own a big interest in the biggest Nebraska farm



INTERNATIONAL SALES COMPANY

928-29-30 City National Bank Bldg. Phone Douglas 3108

OMAHA, NEBR.

Sole Agents for the Stock in the
S. & F. Stock Company

Would you be content to have a big ranch and cattle and hogs and horses that you might call your own? If you had the money, and knew how, you would be glad to take a hand in an enterprise of this character, wouldn't you? You would like to go into things on a big scale. Would you not be satisfied to be a shareholder in such an enterprise? Would you not be satisfied to be part owner in a ranch of 25,000 to 50,000 acres, with several thousand cattle grazing? Wouldn't you like to share in the profits of a feeding farm where several hundred steers are adding flesh every day and hundreds of hogs putting on fat every hour,

For Further Particulars, write or Call on the Selling Agency.