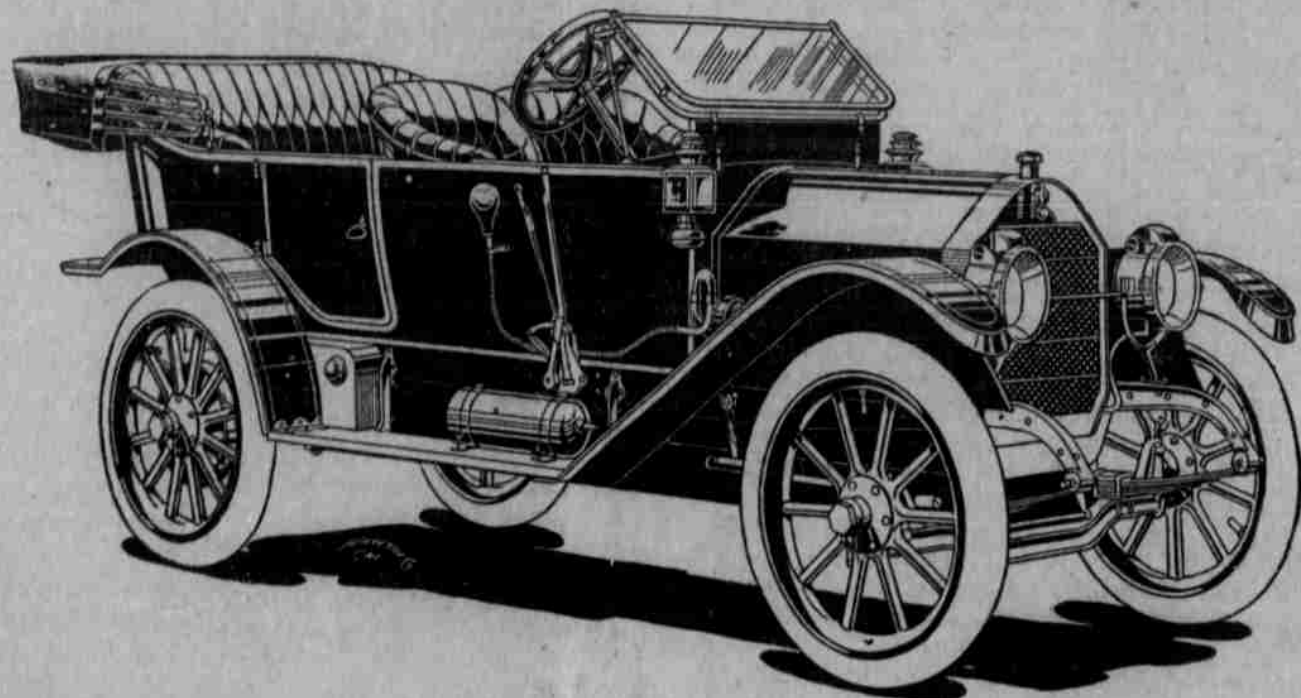




Case Automobiles

THE CAR WITH THE "FAMOUS" ENGINE



The CASE Cars Prove their Power at National Hill Climb at Algonquin, Illinois

In one Class Event the Three CASE Cars entered, finished 1st, 2nd and 3rd. In the other Class Event the Two CASE CARS entered finished 1st and 2nd. The only car to better CASE time was a 200-horse-power Imported Racing Car.

Clipping from Chicago Newspapers, June 9th, 1911:

"By winning two firsts, two seconds and one third in the two divisions in which they competed in the Algonquin Hill climb near Chicago last week the Case Cars proved their speed and strength in a manner that has excited an unusual amount of comment. The fact that the only American stock car that beat the machine made by the J. I. Case Threshing Machine Company had more than twice the latter's cylinder displacement and sells for more than twice as much money is in itself a matter worthy of interest to every man who can handle a steering wheel One of the best contested features of the day was won by Jagersberger in a Case car; Strang in another Case taking second place, with Monckmeter in a Staver third and another Staver fourth. Jagersberger likewise defeated Strang in the Class "C" tests in which Case cars ran first, second and third in that feature."

More Than Satisfied

PLATTSMOUTH, NEBRASKA, }
August 17, 1911. }

I am the owner of a CASE Threshing Machine, which I purchased from Mr. M. E. Manspeaker of Plattsmouth, and I want to say that the machine does much better than I thought it possibly could, and I am more than satisfied in every way. I consider the CASE the best on the market today. This season I have threshed with the same about thirty thousand bushels of grain, and the machine worked perfectly all the time in use. I have threshed one thousand bushels of wheat in ten hours.
CARL SERGUN.

THE CASE COMPANY

I have railroaded more or less for 35 years, and will say that the wheel scrapers that I bought from M. E. Manspeaker, your agent, are the best all around scrapers that I have ever handled and I cannot speak too highly of them.
GEORGE POISALL.

Does More Than It Claims

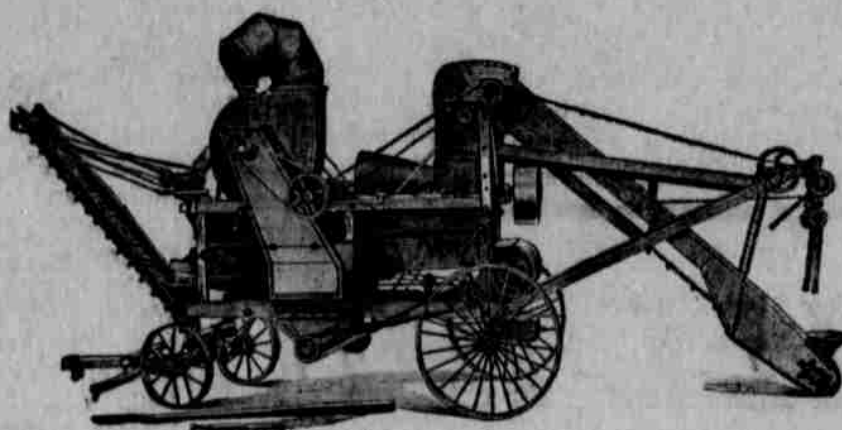
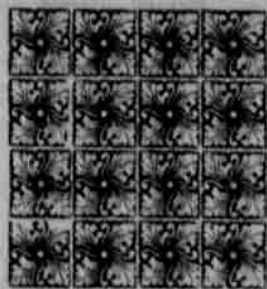
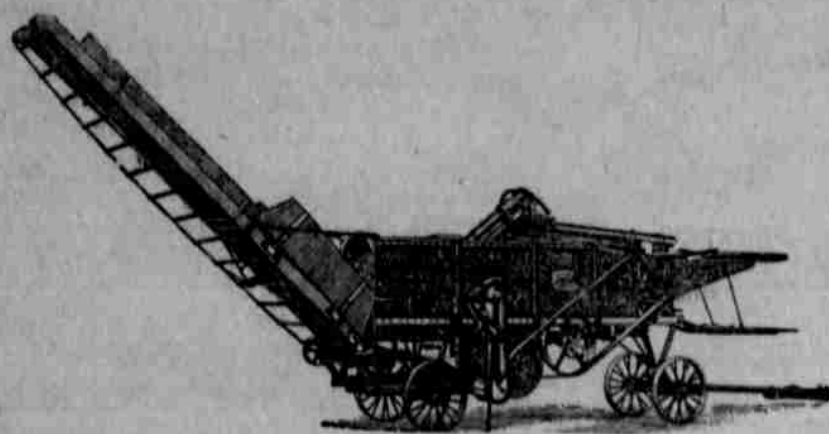
PLATTSMOUTH, NEBRASKA, }
August 10, 1911. }

We are owners of a CASE Threshing Machine, and cannot speak too highly of it. We threshed twenty-two acres of wheat in three hours and a half, the wheat averaging about twenty bushels to the acre. We consider the CASE Threshing Machine by far the best and would not use any other. If anything, it does more than is claimed for it by the manufacturers. Pete Campbell's 15-hp engine furnished the power.

WILLIAM SPLIT
GLENN CAMPBELL

The J. I. Case Corn Sheller and Threshing Machine!

The Best Known All Purpose Machinery on the Market for the Farmer Today!



This week we are publishing just a few of the many testimonials of their values to the users. They are money makers for their owners, as well as a great time and labor-saving machinery. When you select a piece of machinery from the CASE line you may rest assured that you are getting the very best—no matter how small or how large your investment may be. The CASE line is far from the experiment station, they are successfully filling every demand of the farmer. They are famous for their wonderful power and durability, their capacity for handling all the heavy work of the farm. They have proven their value as both time and money savers for their owners. See us today for anything that you are needing in the line of new and modern farm machinery.



M. E. MANSPEAKER,

Plattsmouth,

AGENT

Nebraska

