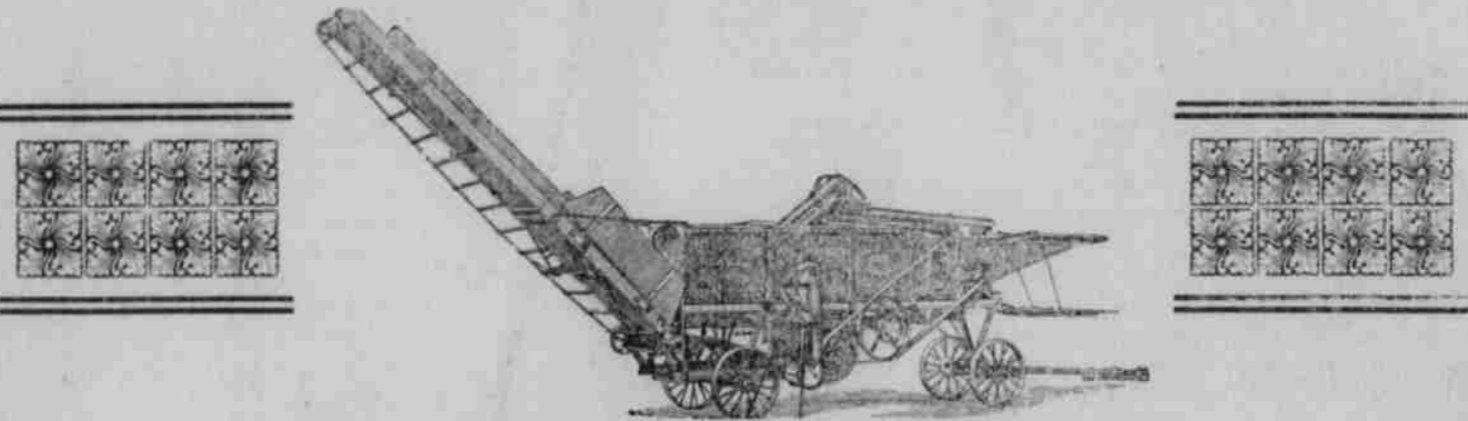


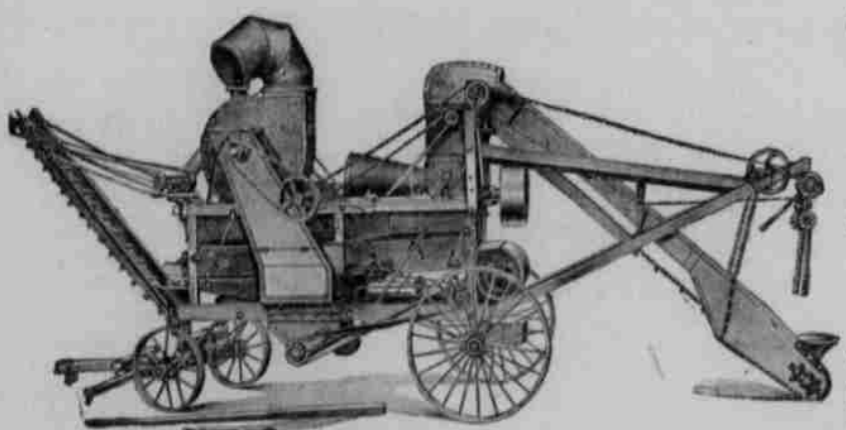
THE J. I. CASE

- Threshing Machine Company! -



Case Steel Threshing Machine

THE J. I. CASE

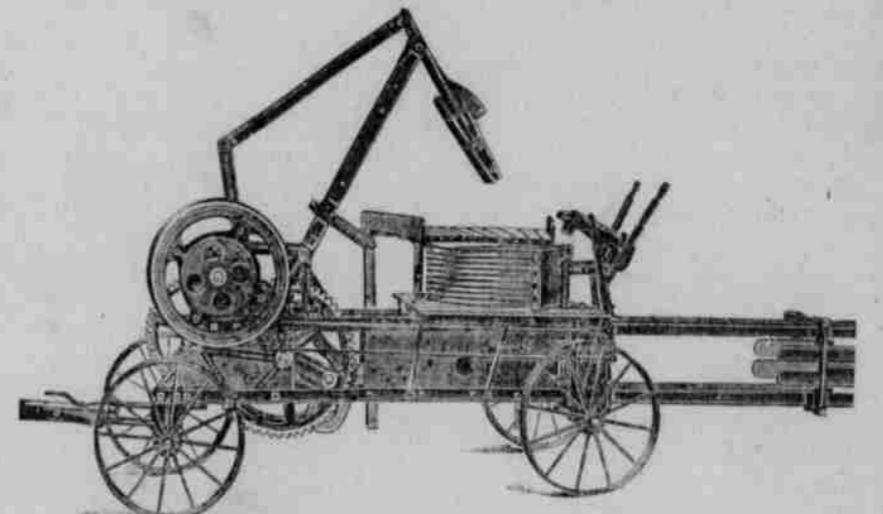


Corn Sheller

THE season is on when you are going to need a new corn sheller, and it will no doubt pay you to inspect the CASE quality before making your selection. This is the best Corn Sheller on the market today.

Case Steel Baling Press!

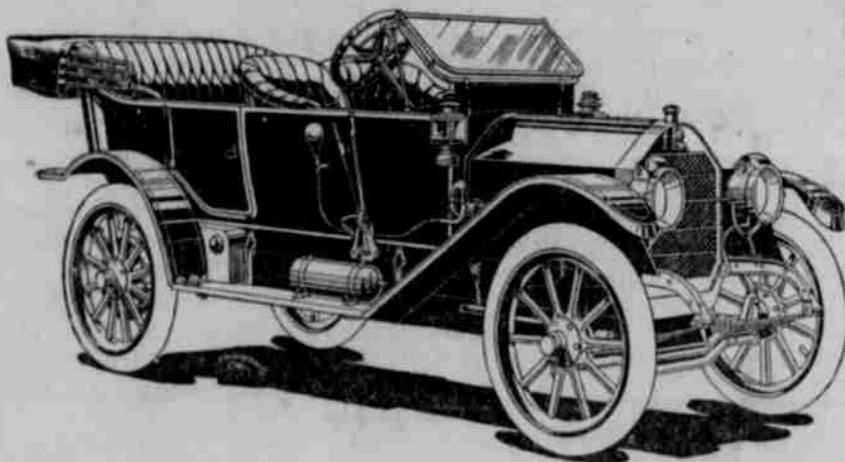
THE demand for Baling Presses for hay and straw has greatly increased during the past few years, thoroughly demonstrating that they are a safe investment and a money maker or the average farmer and especially the large hay grower. Let us talk CASE quality to you on all these lines of farm labor savers and money makers. So drop in sometime and see us.



The Case Automobile the Car with the Famous Engine!

The severe and exacting service jected has fully demonstrated their throughout, which not only emphasizes their depend-factor in their economy in maintenance and opera-and tear of the tires.

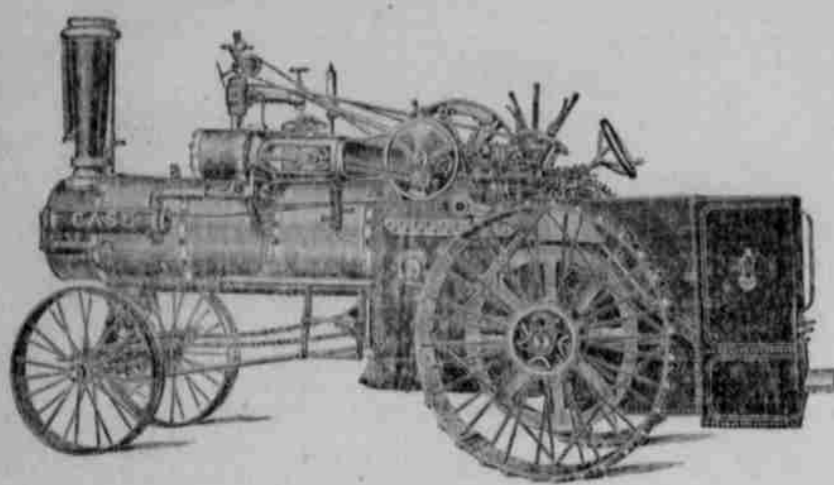
To the user the CASE car, is the car with the mous Engine is to be pleased, for the engine is simple for all requirements.



to which our cars have been sub-unequaled structural strength ability under the hardest usage, but is an important tion, and reduces to a very marked degree the wear

Famous Engine. To own a CASE car with this Fa-ple, strong and silent. The power it develops is am-

The J. I. Case Traction Engine!



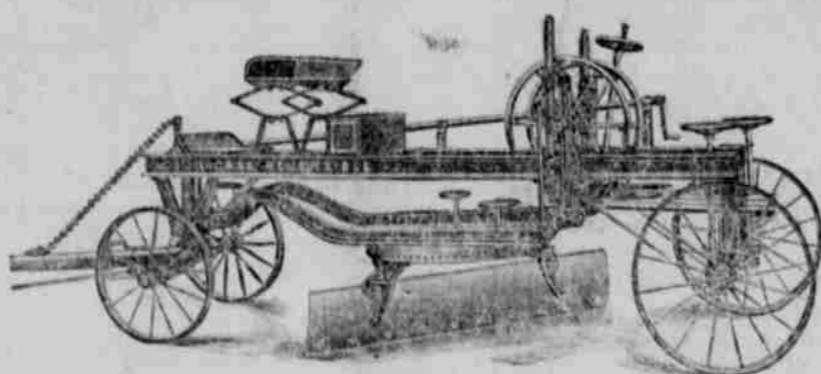
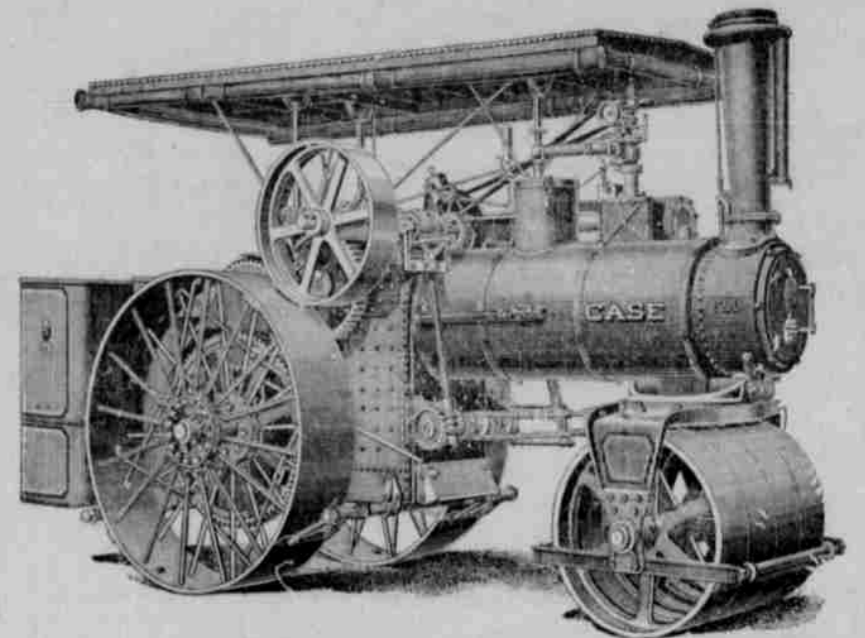
sure, which is superior to the hand method. The CASE engines are without an equal for strength and durability, both simple and safe in operation.

THE CASE engines are powerful, because they are made for the heavy work that is required of them. The CASE boilers are of the true locomotive type with the open fire-box. They are made from the best grade of flange steel, of 60,000 pounds per square inch tensile strength. This material is subjected to a physical and chemical test in the Case laboratory, and seams are double rivited, by the hydraulic pres-

THE CASE STEAM ROLLER

The Only Spring Mounted Road Roller Ever Built.

The CASE Roller is complete in every detail and embodies all of the features necessary in a first-class roller, carrying a ten ton pressure.



Case Perfection Reversible Road Grader!

M. E. MANSPEAKER,

AGENT

Plattsmouth, : : : : - Nebraska