

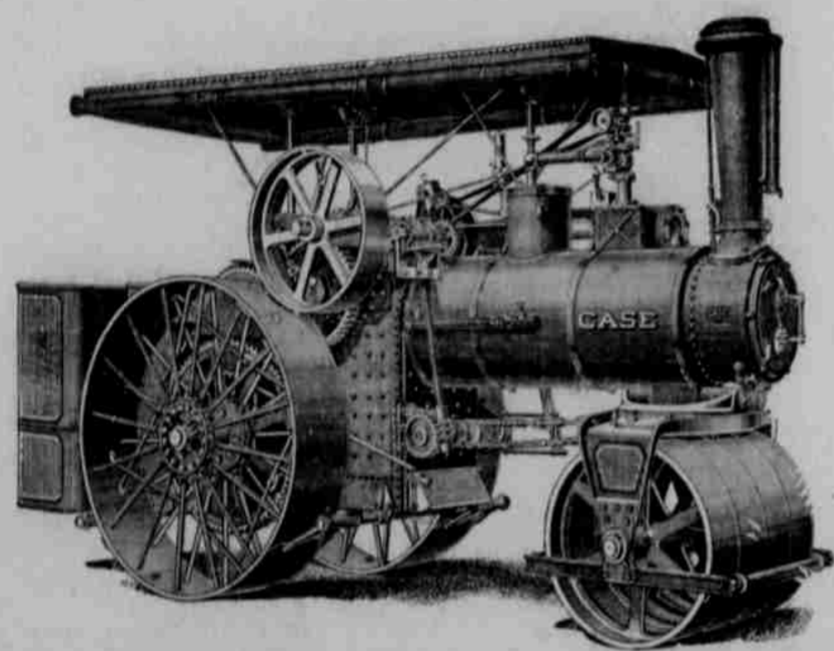


The Case Farm Machinery!



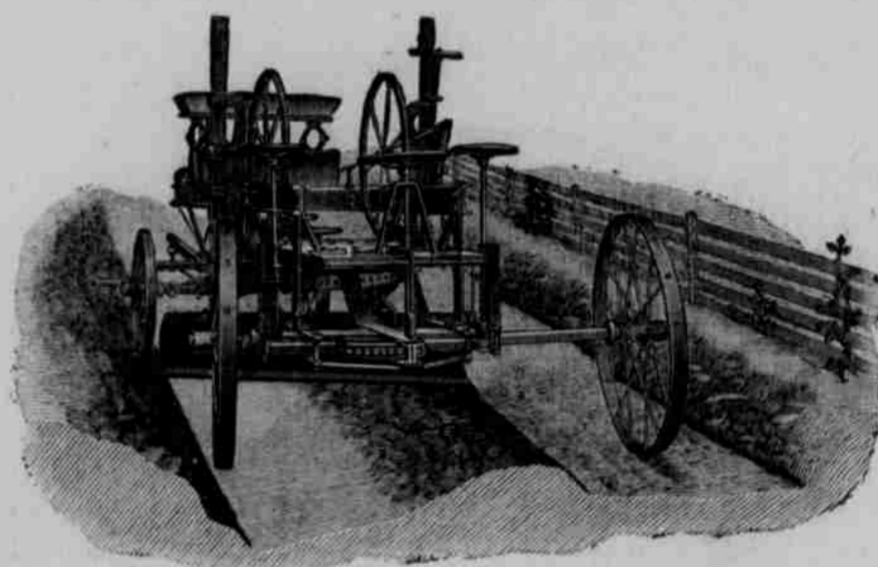
MR. M. E. MANSPEAKER,

as agent for the Celebrated and World-Wide Known J. I. CASE All Purpose Farm Machinery, desires to consume just a small portion of your valuable time during the next few weeks, by endeavoring to tell you why you are annually losing money by not using the CASE FARM MACHINERY. The J. I. CASE COMPANY and every agent throughout the land, have but one point in view, and that is to tell you why the J. I. CASE MACHINERY is built as a money maker for the farmer. For several weeks Mr. Manspeaker has been running a two-page advertisement in the Plattsmouth News-Herald, and believing that he could not reach all the farmers of this county through the columns of the one paper, Mr. Manspeaker contracted for one page in the Journal for the next two months. He wants to talk to all the farmers of Cass County, and through the columns of the local paper is the proper source to obtain the best results.



The Case Traction Engine and Road Rollers!

The Traction Engine has become a positive and reliable motive force for plowing, threshing, hauling, grading, saw milling, rock crushing, pulling stumps, or moving structures too heavy for teams. Nothing yet has displaced it in the above named uses, and many others that we might enumerate. The CASE traction engines are very powerful, easy to control and are suitable for driving all kinds of farm machinery, and will develop more strength and pull a heavier load than any other make of an engine, and are manufactured from the 30 horse-power up. Our 100 horse-power, 12x12-inch cylinder Simple Traction Engine won for the second time the Gold Medal and First Prize in the Steam Plowing Contest at the Winnipeg Industrial Exhibition. Its score was 89 per cent perfect—the highest score of any engine in the contest. We believe that this engine stands without a rival for all kinds of heavy farm work. Our 75 horse-power engine, is the general purpose engine, as it will drive the largest threshing machine built, and work well in all other classes of farm work. It is a specimen of the high-class CASE perfection in all farm machinery.

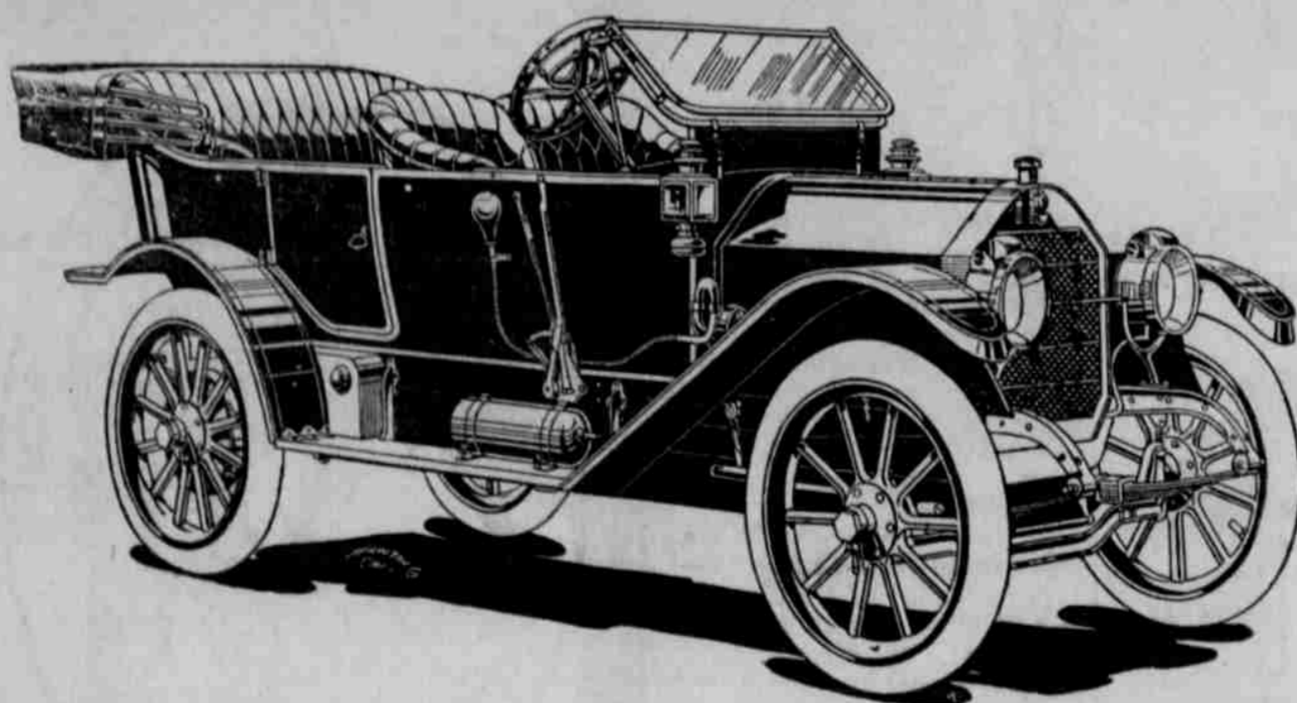


The Case Perfection Road Grader!

The CASE Perfection Reversible Road Grader embodies in all its construction features of strength, durability and ingenuity. All the adjustments are easily made, and are built of the best known materials, which are composed malleable iron and steel. The lightness of draft is a very important factor in all road grading machinery and one that must not be overlooked. This machine is constructed so as to impart the greatest strength, and yet become second to none in lightness of draft. It is a pleasure for the operator to handle a CASE "Perfection" Reversible Road Grader.

Keep your eye on this page for the next two months and you will find some interesting stories dealing upon the many good qualities, also money makers for the farmer, of the all purpose CASE Farm Machinery.

The CASE Manufacturing Co. make everything that is valuable and almost indispensable for the progressive farmer. We will take great pleasure in explaining to you what we know of them if you will drop around and see us.



The Case Automobiles!

THE CAR WITH THE FAMOUS ENGINE ARE BEING RECOGNIZED EVERYWHERE, and by everybody. Nobody else can sell the famous engine, and everybody knows that the engine is what makes the automobile. This car with the famous engine, is of the same standard as the line of engines and threshing machinery we have built and sold so long, so far and so wide. The CASE Cars are built in the Roadster, a three passenger machine; the Suburban and Torpedo, four passenger; The Touring, a five passenger, and the Case Limousine. The machine is fitted with three speeds, and is noted for its hill climbing qualities.



Plattsmouth,
Nebraska.

M. E. MANSPEAKER, Agent

