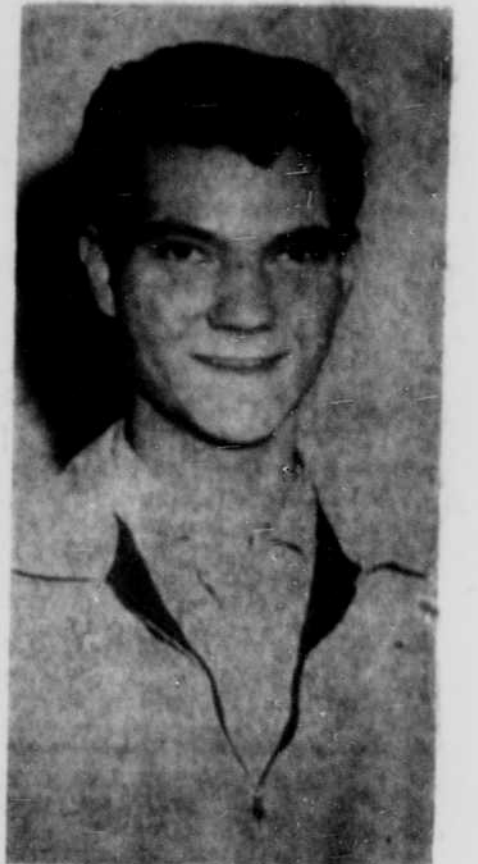




Walt Salmen

## TWO YEARS AGO...

In March, 1961, AlBronze Metal Products moved their factory to O'Neill. Walter and Richard Salmen brought with them their families . . . a few tools of their trade . . . and a dream. A dream of free enterprise, of independence, and a belief that O'Neill was the right place for them to invest not only their money but their very lives and futures of their families.



Dick Salmen



Walt Salmen and John Jeffrey pouring stage weights

## TODAY ALBRONZE METAL FOUNDRY

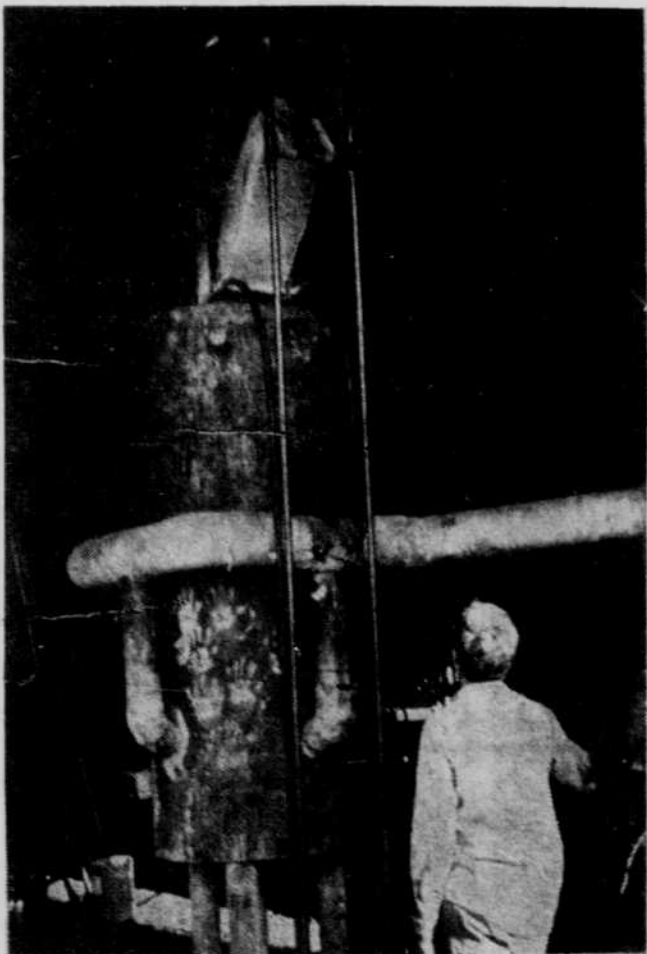
Employs 7 persons who support families and add to the prosperity of O'Neill.

Purchases 75 percent of their supplies, material and equipment locally.

Over \$25,000 a year payroll.

Has added a Gray Iron Foundry to their brass and aluminum operation.

Pours over 40 ton of cast iron a month producing such articles as Chain Sprockets, Wheel Weights, Cash Register Frames, Counter Weights, Manhole Rings and Covers, some of which is sold locally.



Dick Salmen charges the cupola with iron and coke



Walt Salmen pours molten cast iron into chain sprockets



Ken Johnson making chain sprocket molds out of sand

### TOMORROW ---

### They Will Do Even More

# Pledge Your Support Today To The O'Neill Industrial Development Corp.