

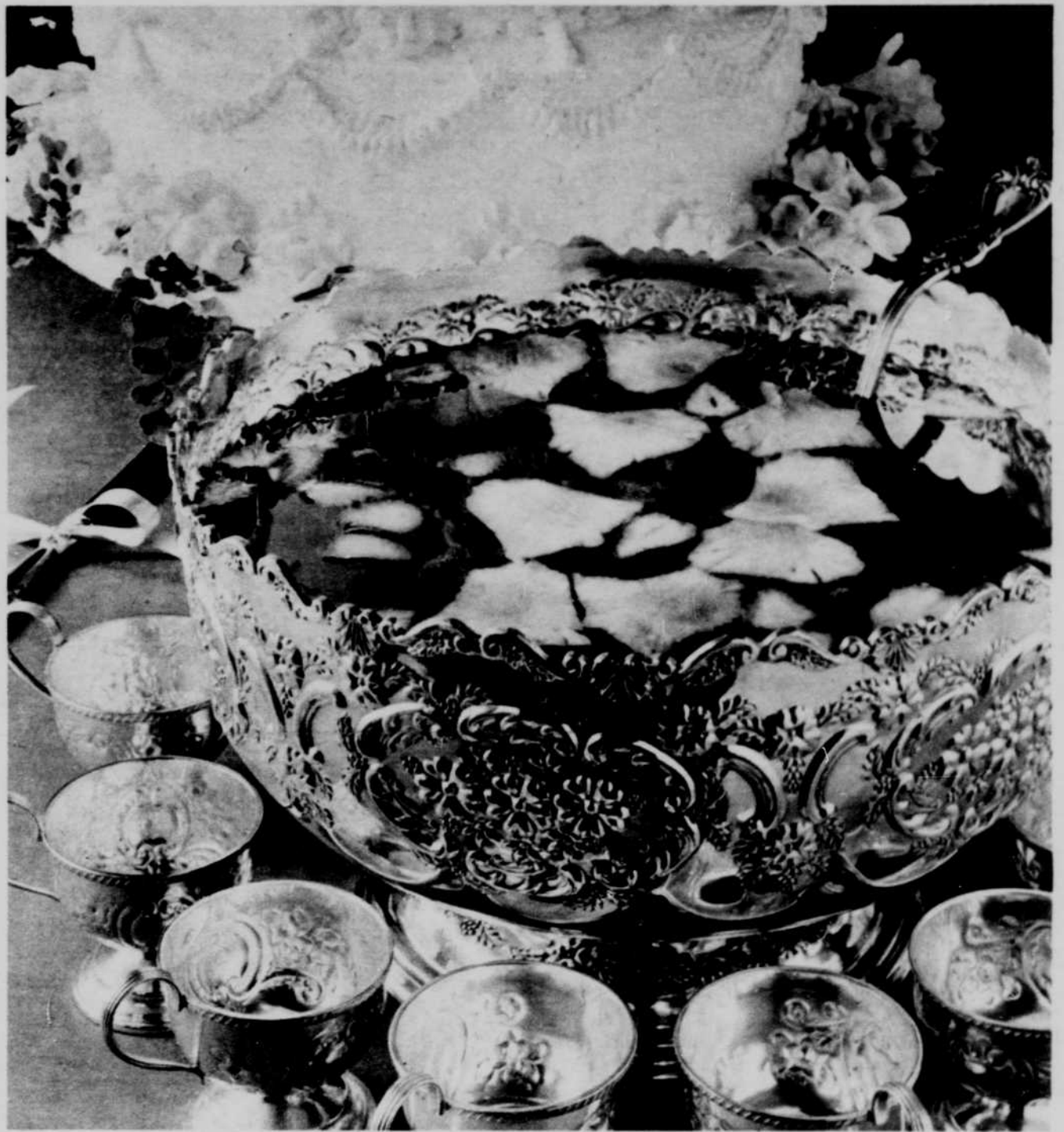
# Berry Delights

STYLED FOR SUMMER

## GOLDEN WEDDING PUNCH

- |  |  |
|--|--|
| 2 cups water                                 | 1 cup lemon juice, fresh, canned or frozen |
| 2 rounded tablespoons instant Nestea         | 1 cup pineapple juice, canned or frozen    |
| 3 cups orange juice, fresh, canned or frozen | ½ cup sugar                                |
| 1 28-oz. bottle ginger ale                   | ¼ cup grenadine                            |

Combine water and instant tea in a 2-quart container and stir briskly. Add balance of ingredients except gingerale and stir to dissolve sugar. Chill. Place large block of ice in punch bowl and pour over instant tea mixture and ginger ale. Garnish with slices of fresh pineapple, cut in bell shapes, and large fresh strawberries, cut in halves, lengthwise. Yield: 22 one-half cup servings.



Nestea® gives you "teapot flavor"



Turn on the tap, spoon in Nestea crystals, and see how the rich, golden color of fine Pekoe teas floods your glass. Taste the refreshing goodness only Nestea's "teapot flavor" gives. Instantly!



...instantly...in cold tap water