

FLEMING

Closing Out

FLEMING

FARM SALE

Because we have decided to quit farming we will sell the following described personal property at public auction at the farm LOCATED . . . 8 miles southwest of Ewing on the Ewing-Chambers road . . . OR . . . 16 miles south of O'Neill on Hwy. 281 and 10 miles east on the Chambers-Ewing road . . . OR 9 miles north of Hoerle's Service station and 10 east on the Chambers-Ewing road. (Watch for Farm Sale Arrows) on . . .

FRIDAY, SEPTEMBER 8

Lunch on Grounds

Sale Starts at 1 p.m.



60 HEAD OF CATTLE 60

- 24 - Good Holstein milk cows, 3 to 5 years old. Some milking now, some to freshen in fall.
 1 - Hereford cow
- 11 - Spring calves
 24 - Yearling steers and heifers
 1 - Registered Hereford bull

1 REGISTERED BRAND

2 - White sows to farrow in September

MACHINERY AND MISCELLANEOUS

1935 John Deere "B" tractor, runs good
 1959 Heavy duty Wintermote winch, will fit any tractor
 7-ft. J. D. No. 5 power mower with 4 extra sickles
 Good "A" haystacker on wheels
 A-C PTO rake and tedder, good condition
 12-ft. hay rake, good
 Power hay sweep on Chevrolet truck
 Short turn heavy duty autoguide Gene Hoerle cable rack with 9-in. tires
 Oliver 2-14 tractor plow
 2-Section harrow
 7-ft. Grain drill with grass seed attachment, good
 I-H 8-ft. Disc, good
 I-H 8-in. Burr feed grinder
 J. D. manure spreader
 Hayrack on rubber
 Wagon on rubber

Old wagon
 2-Wheel trailer built on Chevrolet rear end

POULTRY SUPPLIES

4-Lamp electric brooder
 Poultry supplies, feeders, waterers, etc.

Hog troughs
 Lots of old iron
 Gas regulators
 Some household goods
 Some cables
 Pipe vise, wrenches, shop tools, scoops, forks and other miscellaneous items too numerous to mention

8 x 12 GRANARY BUILDING with top elevator gate and on creosoted runners. All new last fall.

FENCING SUPPLIES

25-Electric fence posts
 Electric fencer, good
 Some 10-ft. creosoted poles
 Roll of woven wire
 100-Cedar posts

About 75 feet of 1½-in. plastic pipe
 About 250 feet of 1-in. plastic pipe
 2-100-gal. Fuel barrels and stand
 3-50-gal. Fuel barrels
 Maytag wringer washer and rinse tubs
 Some log chain
 Pipe fittings and well supplies
 Power bench saw
 B & N Sickle grinder, excellent condition
 Portable jig saw
 Cushman 4-h. p. scooter motor, good

MILKING EQUIPMENT

300-gal. Sunset stainless steel bulk milk tank, less than 1 year old
 1957 Surge milker with strainer, 3 buckets, 80 feet of pipe and 6 stall cocks
 Dairy scale
 I-H 3-5 Power cream separator, complete overhauled and in A-1 shape
 Hangers, pails, cans, buckets, hose, etc.

HAY AND STRAW

190 Bales oats straw
 4-Stacks 1st cutting alfalfa
 1-Stack 2nd cutting alfalfa

6-ft. Aermotor windmill with 35-ft. heavy duty steel tower
 6-ft. Aermotor windmill with 20-ft. heavy duty steel tower
 Co-op 8-ft. Tank, new
 6x2-ft. Tank

CLIFF FLEMING, Owner

Roy Kirwan, Ed Thorin and Chuck Mahooney, Auctioneers

Auction Service, Clerk

240 - Acre Land Sale

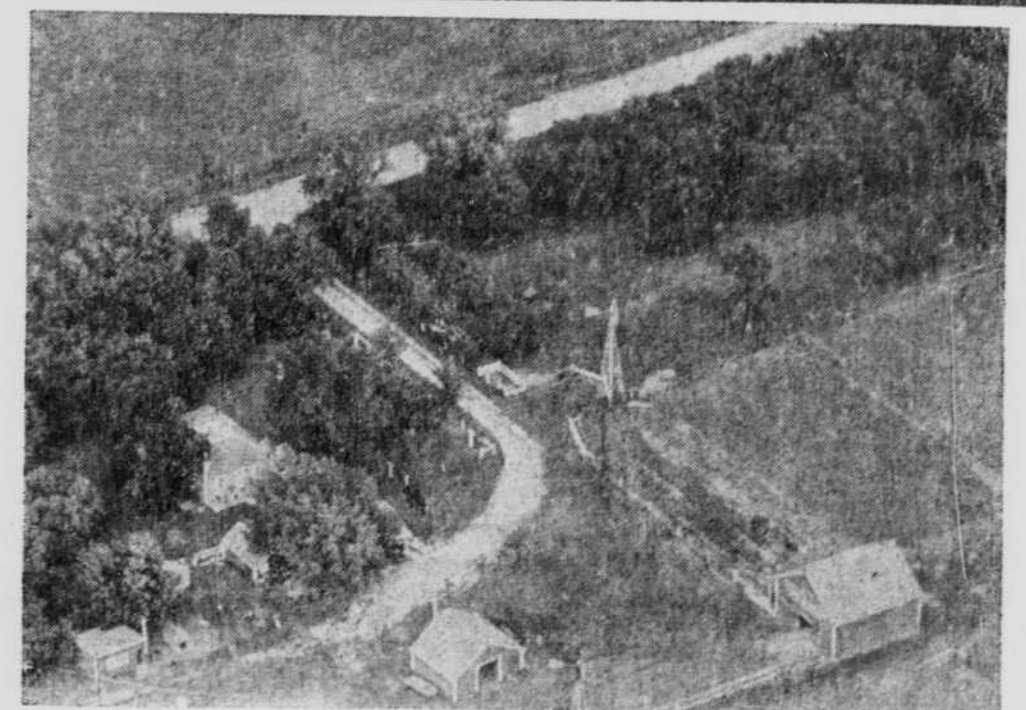
Plus 240 Acres School Lease Land
 To Settle Emma Fleming Estate

Friday, Sept. 8

At the farm location described in the above personal property sale. Farm is 240 acres including 50 acres of alfalfa. Buildings include 24x20 double crib, 12x18 shop, 16x16 chicken house, hexagon brooder house, 28x30 barn with hay loft, concrete cave and 6-room dwelling with phone. REA to all buildings. Place has 4 wells in yard, 1 well in pasture, yards, corrals, catch pen, loading chute, good metal windbreaks and over 100 feed racks built of bridge plank and creosoted posts.

LEGAL DESCRIPTION: NW¼ Sec. 15 and N½ of NE¼ Sec. 16, Twp. 26, R 10, Holt county, Nebraska.

TERMS: 20% down day of sale, balance to be paid upon delivery of abstract and warranty deed when possession will be given.



YOUR INSPECTION INVITED

Anyone wishing to inspect the property may do so by contacting the real estate broker or Cliff Fleming, tenant.
 Ed Thorin, Licensed Real Estate Broker-Auctioneer