

# There's no place But your ever-dependable **SAFEWAY for Superb MEATS**

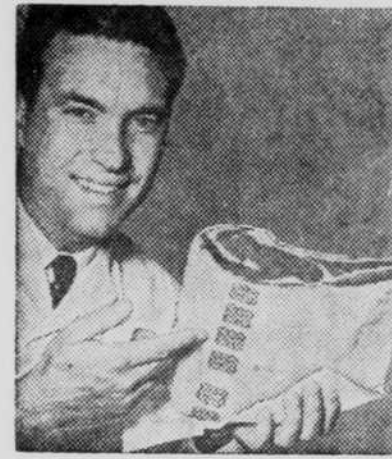


U.S.D.A. Grade-A, tender, full-meated

*Frying*  
**CHICKENS**  
WHOLE  
**Lb. 29<sup>c</sup>**

Cut-up... Lb. **35<sup>c</sup>**

Safeway's Fryers are especially selected for superb eating qualities by Safeway's own poultry buyers. Every bird is U.S. Inspected and U.S.D.A. Government Grade-A, the highest grade. You're assured of the very finest when you buy frying chickens at Safeway!



**ONLY U.S.D.A. CHOICE**

At Safeway, all beef is U.S.D.A. Choice Grade, aged to perfection, the quality that gives you the most in tenderness, juiciness and flavor. This grading is done by United States Department of agriculture experts who judge the meat strictly and impartially, awarding the choice grade only when U.S.D.A. specifications are met.



**SCIENTIFICALLY AGED**

Even the finest quality meats reach peak flavor only after proper aging. In our vast air-conditioned aging rooms, Safeway meats are held under controlled temperatures the exact number of days required to insure perfect tenderness and flavor. This meticulous aging is one of the reasons it pays to shop Safeway for meat.

Choose the extra special individual chicken parts you prefer...

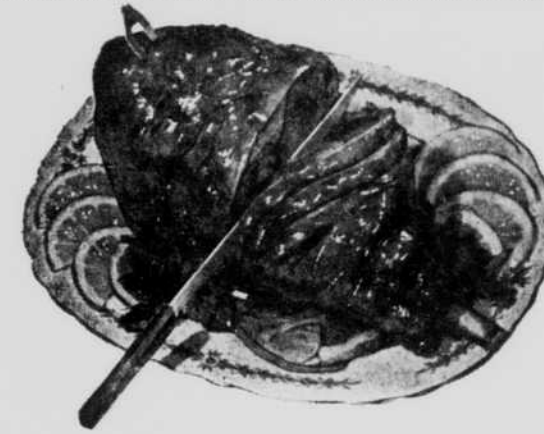
**BACKS & NECKS**..... Lb. 15<sup>c</sup>  
**WINGS**..... Lb. 25<sup>c</sup>  
**LEGS**..... Lb. 59<sup>c</sup>  
**BREASTS or THIGHS**.. Lb. 69<sup>c</sup>

**Cod Fillets** — or PERCH, 1-lb. 39<sup>c</sup>  
Captain's Choice; frozen... Pkg.  
**Halibut Fillets** Captain's Choice; 1-lb. 69<sup>c</sup>  
frozen... Pkg.  
**Fishsticks** Captain's Choice— 57<sup>c</sup> 8-oz. 33<sup>c</sup>  
frozen, 14-oz. Pkg... Pkg.

You get more gifts for less books with valuable

**Gold Bond Stamps**

Free with your purchases... at SAFEWAY!



U.S.D.A. Choice Grade, Aged, Safeway Superb

**Lamb Roast**

LAMB SHOULDER

LEG O' LAMB

**39<sup>c</sup> lb.**

**59<sup>c</sup> lb.**

Trimmed just right for perfect eating and trimmed before weighing!

**Chuck Steaks** U.S.D.A. Choice Grade, Aged Beef... Lb. 59<sup>c</sup>

**Lamb Chops** Rib, Lb. 79<sup>c</sup> Loin, Lb. 89<sup>c</sup>

**Lamb Chops** Shoulder, Blade cut, Lb. 49<sup>c</sup> Arm cut, Lb. 59<sup>c</sup>

**Lamb Stew** Grand tasting, breast or flank... Lb. 15<sup>c</sup>

**Beef Sausage** Safeway Brand... 1-lb. Roll 39<sup>c</sup>

**Baked Beans** Morton House... 2 16-oz. Cans **35<sup>c</sup>**

**Pizza Pie Mix** Chef Boy-Ar-Dee—delicious... Pkg. **39<sup>c</sup>**

**Sardines** Peacock Brand—Mustard or Oil pack... 3 Tins **29<sup>c</sup>**

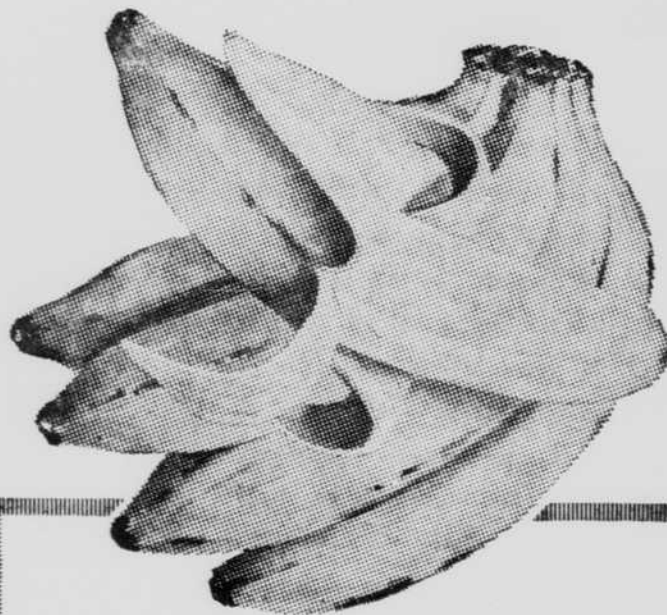
**Evap. Milk** Pet or Carnation... 6 Tall Cans **89<sup>c</sup>**

Cherub Evaporated Milk... 6 Tall Cans 85<sup>c</sup>

**Cookies** Supreme—Alpine 11 1/2-oz. Pkg. 33<sup>c</sup>  
Cremes, fresh... Pkg.  
Sunshine—Cocoanut 14-oz. Pkg. 39<sup>c</sup>  
Macaroons, crisp... Pkg.  
**Vanilla Wafers** Nabisco—7 1/2-oz. Pkg. 25<sup>c</sup>  
ideal with milk... Pkg.  
**Instant Coffee** Nescafe—6-oz. Jar 94<sup>c</sup>  
(Save 15c pack)... Jar  
**Bisquick** Multi-purpose, 40-oz. Pkg. 49<sup>c</sup>  
baking mix... Pkg.

**Instant Coffee** Maxwell House; 6-oz. Jar 94<sup>c</sup>  
(Save 15c pack)... Jar  
**Nestle's Cocoa** EverReady, 16-oz. Pkg. 59<sup>c</sup>  
rich flavor... Pkg.  
**Biscuits** Pillsbury or Ballard, refrigerated... 2 8-oz. Pkgs. 23<sup>c</sup>  
**Cat Food** Nine Lives—all tuna... 2 6-oz. Cans 29<sup>c</sup>  
**Napkins** Scott—family size, white or colors... 2 Pkgs. of 60 29<sup>c</sup>

**Cranberries** Eatmore; ideal with any meat 2 No. 300 Cans 39<sup>c</sup>  
**Apple Jelly** —or MINT, Empress... 10-oz. Jar 23<sup>c</sup>  
**Lucerne Butter** Quartered, lightly salted... 1-lb. Ctn. 69<sup>c</sup>  
**Soup** Mrs. Grass—Chicken Noodle or Vegetable... 2-pack Pkg. 25<sup>c</sup>  
**Date Bar Mix** Betty Crocker—2-pack (10c off pack)... Pkg. 59<sup>c</sup>



A top-quality produce buy.. Safeway's plump, ripe  
**Golden Bananas**  
**3 lbs. 39<sup>c</sup>**

In special ripening rooms Safeway's bananas come to full sweetness and flavor... ripen from the inside out as nature does it. Because Safeway doesn't use hurry-up methods, bananas never taste "chalky." You can't buy finer bananas!

**Grapefruit** Indian River, seedless, red or white "meated" ... 3 for 29<sup>c</sup>  
**Reddish Yams** Puerto Rico variety, moist flesh, smooth... 2 Lbs. 29<sup>c</sup>  
**Green Peppers** Bell variety, thick, heavy skin... Lb. 19<sup>c</sup>  
**New Cabbage** Firm, green heads, crisp... Lb. 5<sup>c</sup>

RIGHT RESERVED TO LIMIT QUANTITIES... All prices effective thru Saturday, February 25, in O'NEILL, NEBR



Bakery Feature-of-the-Week — Save 6c on

**Skylark Black Bread**

Old World, fresh, sliced, with true Continental flavor, ideal for making sandwiches. 16-oz. Loaf **19<sup>c</sup>**

**Bread** Skylark—Protein Power Packed, sliced... 16-oz. Loaf 19<sup>c</sup>  
**Donuts** Mrs. Wright's—Plain, Old Fashioned, (Save 5c pack)... Pkg. of 6 28<sup>c</sup>  
**Dinner Rolls** Skylark—Brown & Serve... Pkg. of 12 28<sup>c</sup>  
**White Bread** Mrs. Wright's; fresh, sliced... 16-oz. Loaf 19<sup>c</sup>  
**English Muffins** Mrs. Wright's of 6 30<sup>c</sup>

Lucerne Party Pride  
**ICE CREAM**

1/2-gal. Ctn. **79<sup>c</sup>**

Available in 13 delicious flavors

Ice Cream Scoops... Each 79<sup>c</sup>



**WIN... An RCA WHIRLPOOL FREEZER**

Get full details and entry blanks at Safeway. 200 persons will each win an 11 cu. ft. RCA Whirlpool Freezer and 2000 others will receive 2nd prizes.

The contest is easy and fun, so hurry to Safeway to get your entry blanks.

Golden Book Picture Atlas of the World

Book No. 4 on Asia now on sale for only 99<sup>c</sup>