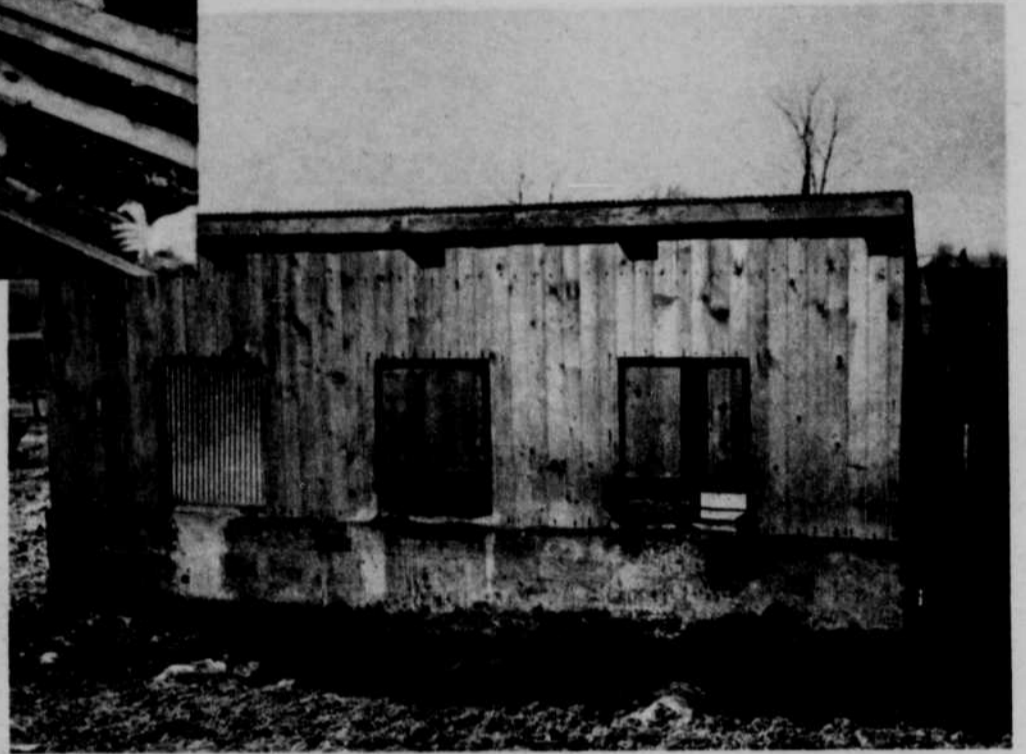


WATER

Heat cable is a natural to protect a long trough-type waterer such as this. It's most important that hens have easy access to water at all times since they can't hold much.

You needn't do without a pressure fountain anymore, even though there's no electrical service where you want the waterer. Many models can now be purchased equipped with LP gas heating elements.



Bantam weight

At first glance, you might think this fellow *couldn't* swing up a chain saw that easily after cutting wood all day.

But look at it this way: the saw he's got is the Remington "Bantam". And with that 18" bar on it, he's lifting just about 20 pounds. Which isn't much—not when you consider the work a "Bantam" can do.

You can use it for just occasional cutting. Or for trimming limbs and bucking. Or you can work a woodlot with it. You see, even though the "Bantam" is priced for the once-in-a-while user, it's *built* for the all-day cutter.

It's got the patented roller-bearing nose you see on all Remington chain saws, the patented nose that makes cutting less work because it spins the chain smoother, faster. It's got a Remington-built engine that's as steady and solid as a draft horse. And look how all the controls are right at your fingertips.

The fact is, you get a lot more saw for your money from every Remington chain saw. Look over the wide Remington line—lightweights, heavy-duty, gear-drive, direct-drive. They're all at your local Remington dealer's.

Remington 
CHAIN SAWS

Remington Arms Company, Inc., Bridgeport 2, Conn.
In Canada: Remington Arms of Canada Limited,
36 Queen Elizabeth Blvd., Toronto 18, Ont.