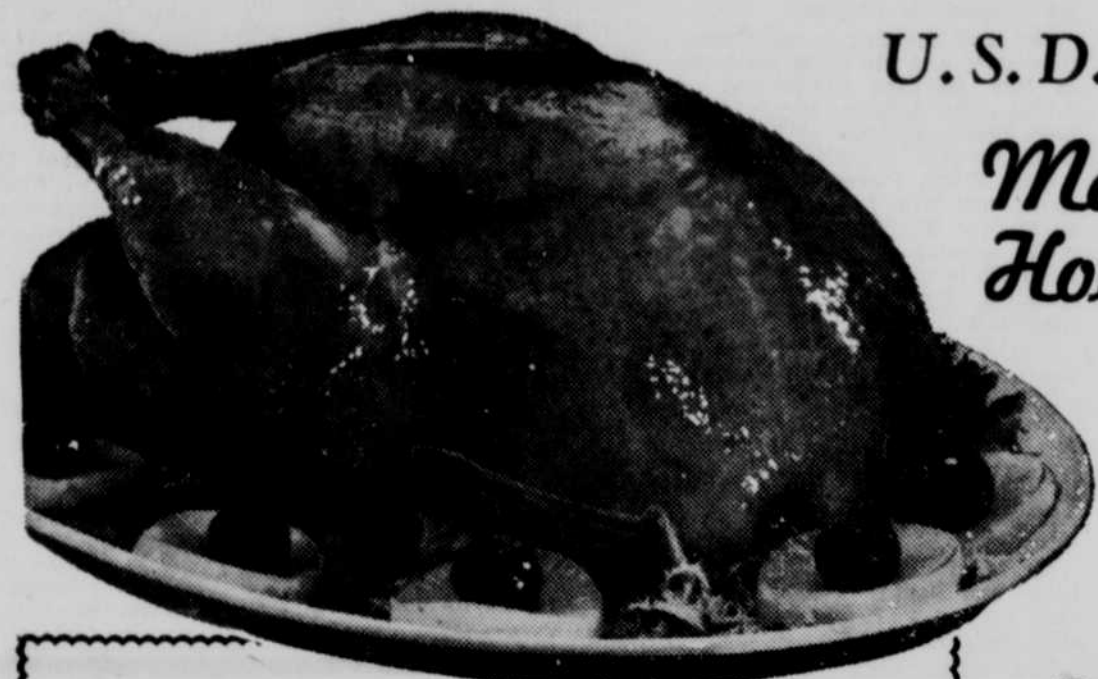




# Pre-Thanksgiving Sale

**SAFEWAY**



U. S. D. A. Grade-A, U. S. Inspected, fresh-frozen,

## Manor House TURKEYS

16 to 24-lb. **39<sup>c</sup>**  
Toms — lb.

Fryer-Roaster, Beltsville type, 4 to 8-lb., Lb. 49c Hens, 9 to 14-lb., Lb. 43c  
Broad breasted, tender, with plump sweet meat, spotlessly clean.

**Mince Meat**  
None Such —  
28-oz. Jar **49<sup>c</sup>**

Easy-to-use, makes old-time Mince Pie quickly and easily...  
Ideal for your Thanksgiving dessert!

**Pork Tenderloins** ¼-lb. to 1¼-lb., whole or patties. Lb. **89<sup>c</sup>**  
**Picnics** Corned, 4 to 6 pound, average, Lb. 39c Fresh roasting, 6 to 8-lb., Lb. **29<sup>c</sup>**  
**Pork Sausage** Virginia Reel 1-lb. Roll 69c Safeway 1-lb. Roll **33<sup>c</sup>**  
**Fish Portions** Captain's Choice—frozen, breaded 3 12-oz. Pkgs. **\$1.00**  
Cod, Perch, Haddock or Sole

## HAMS

NO CENTER SLICES REMOVED  
Whole or Full Half Ham  
**Lb. 49<sup>c</sup>**

Armour Star or Cudahy Puritan — first quality, fully-cooked, shank end removed on half hams.

For Your Holiday Feast...

**Stuffed Olives** Empress—thrown, 15-oz. Bottle **79<sup>c</sup>**  
manz. variety  
**Cream Cheese** Kratt 8-oz. Pkg. **39<sup>c</sup>**  
Philadelphia  
**Grape Preserves** Empress brand 20-oz. Jar **29<sup>c</sup>**  
**Mixed Nuts** Planter's—regular 15-oz. Can **98<sup>c</sup>**  
**Chocolate Mints** Roxbury 9-oz. Pkg. **43<sup>c</sup>**

Fixings for salads...

**Salad Dressing** Wishbone—Italian 8-oz. Bottle **39<sup>c</sup>**  
**Salad Dressing** Good Seasons—assorted 2 Pkgs. **35<sup>c</sup>**  
**Cider Vinegar** Piedmont—adds zest to salads 1-qt. Bottle **29<sup>c</sup>**  
**NuMade Corn Oil** Ideal for salads 1-pt. Bottle **25<sup>c</sup>**  
**Seasoning Salt** Lowry's 3½-oz. Bottle **29<sup>c</sup>**

Side Dishes...

**Mince Pie** Bel-air; frozen, Premium Quality 24-oz. Pie **49<sup>c</sup>**  
**Sweet Peas** Bel-air; frozen, premium quality 3 10-oz. Pkgs. **49<sup>c</sup>**  
**Green Beans** Town House—French-sliced 2 No. 303 Cans **39<sup>c</sup>**  
**Spiced Apple Rings** Royal 14-oz. Can **33<sup>c</sup>**  
**Onion Soup** Lipton's—easy to prepare 2-oz. Pkg. **39<sup>c</sup>**

# Cottage Cheese Salad Dressing Paper Napkins Sherbet

**Lucerne—** 32-oz. Carton **45<sup>c</sup>**  
12-oz. Carton 19c  
**NuMade,** 1-qt. Jar **45<sup>c</sup>**  
**Miracle Whip,** 1-qt. Jar **45<sup>c</sup>**  
**Kleenex—in white or pastel colors** 2 Pkgs. of 50 **49<sup>c</sup>**  
**Lucerne — Orange, Pineapple or Raspberry** ½-gal. Carton **59<sup>c</sup>**

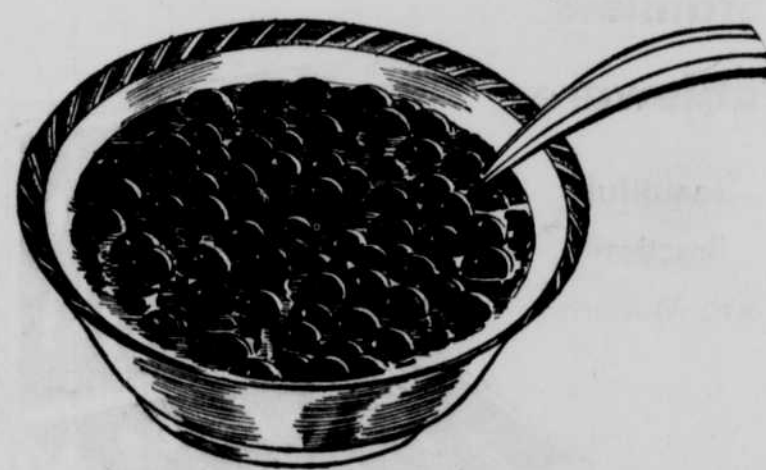
**Marshmallows** Fluff-4-e-t; miniature 10½-oz. Pkg. **27<sup>c</sup>**  
**Sweet Potatoes** Town House; fancy, whole 2 23-oz. Cans **49<sup>c</sup>**  
**Strawberries** Bel-air—individually frozen.. Poly Bag 28-oz. **79<sup>c</sup>**  
**Pineapple** LaLani—sliced, from Hawaii 14½-oz. Can **23<sup>c</sup>**  
**Rolls** DINNER, Mrs. Wright's—frzn., Clover Leaf, Parkerhouse Pkg. of 24 **29<sup>c</sup>**  
**Date Roll** Morton House— a rich dessert 5-oz. Can **23<sup>c</sup>**  
**Cranberry Sauce** Ocean Spray — Delicious with turkey. 2 No. 300 Cans **39<sup>c</sup>**

**Fruit Juice** Dole—frozen, Pineapple-Grapefruit 2 6-oz. Cans **45<sup>c</sup>**  
**Campbell's Soup** Cream of Mushroom 2 No. 1 Cans **37<sup>c</sup>**  
**Alphabet Soup** Heinz 2 No. 1 Cans **37<sup>c</sup>**  
**Soup Crackers** Supreme—fresh 12-oz. Pkg. **27<sup>c</sup>**  
**Glam Chowder** Sea Trader 15-oz. Can **31<sup>c</sup>**  
**Chunk Tuna** Star-Kist—light meat from the sea 6½-oz. Can **35<sup>c</sup>**  
**Chocolate Chips** Baker's 12-oz. Pkg. **39<sup>c</sup>**

**Chili with Beans** Ellis 300 No. 300 Can **35<sup>c</sup>**  
**Ellis Spaghetti** N' MEAT BALLS 300 No. 300 Can **29<sup>c</sup>**  
**Ellis Beef Stew** 300 No. 300 Can **39<sup>c</sup>**  
**Ellis Tamales** In sauce 300 No. 300 Can **29<sup>c</sup>**  
**Ellis Brown Beans** 2 No. 303 Cans **29<sup>c</sup>**  
**Noodles N' Beef** Ellis 300 No. 300 Can **31<sup>c</sup>**  
**Lima Beans N' Ham** Ellis 300 No. 300 Can **37<sup>c</sup>**

The "natural mate" for turkey... fresh, Ocean Spray

**Cranberries**  
Dark red, ripe beauties, ideal to serve with turkey, pork or any other meat.  
1-lb. Bag **15<sup>c</sup>**



**Pascal Celery** Natural green color 2 Large Stalks **29<sup>c</sup>**  
**Sweet Potatoes** Red "meated" 4 lbs. **29<sup>c</sup>**  
**Sweet Corn** Golden Bantam variety 6 Ears **39<sup>c</sup>**  
**Grapefruit** Red or white meated, Indian River, large 3 for **29<sup>c</sup>**

Don't forget these...

**Ground Sage** Crown Colony— or rubbed ¼-oz. Can **19<sup>c</sup>**  
**Stuffing Bread** Mrs. Wright's 20-oz. Loaf **21<sup>c</sup>**  
**Poultry Seasoning** Crown Colony 1-oz. Can **19<sup>c</sup>**  
**Oysters** Sea Trader— use in turkey stuffing 8-oz. Can **39<sup>c</sup>**  
**Spic & Span** Washes without rinsing 16-oz. Pkg. **31<sup>c</sup>**  
**Ad Detergent** For automatic washers 1½-oz. Pkg. **37<sup>c</sup>**  
**Ammonia** Parson's— sudsy, household 1-qt. Bottle **29<sup>c</sup>**  
**Dixie Cups** For cold drinks 25 Pkg. **31<sup>c</sup>**

## Fresh, New Crop NUTS

Large English Walnuts, Brazils or Filberts... help yourself to any quantity of any kind or mix any assortment you wish.

**Lb. 59<sup>c</sup>**

**CHESTNUTS** Extra large size 29c  
**NUT CRACKERS** Each 29c

Lucerne—

**EGG NOG**  
1-qt. Carton 69c  
½-gal. Carton **98<sup>c</sup>**

**DRINKING MUGS** 4 for \$1.00  
Assorted colors, speckled

**Reynolds Wrap**  
Heavy duty,  
25-ft. Roll **59<sup>c</sup>**

**Decorator Bowls**  
9-inch size  
Each **39<sup>c</sup>**

Glass, crystal tri-top, for fruit or nuts



Say Merry Christmas the Gold Bond way... select your Free Gifts early!