

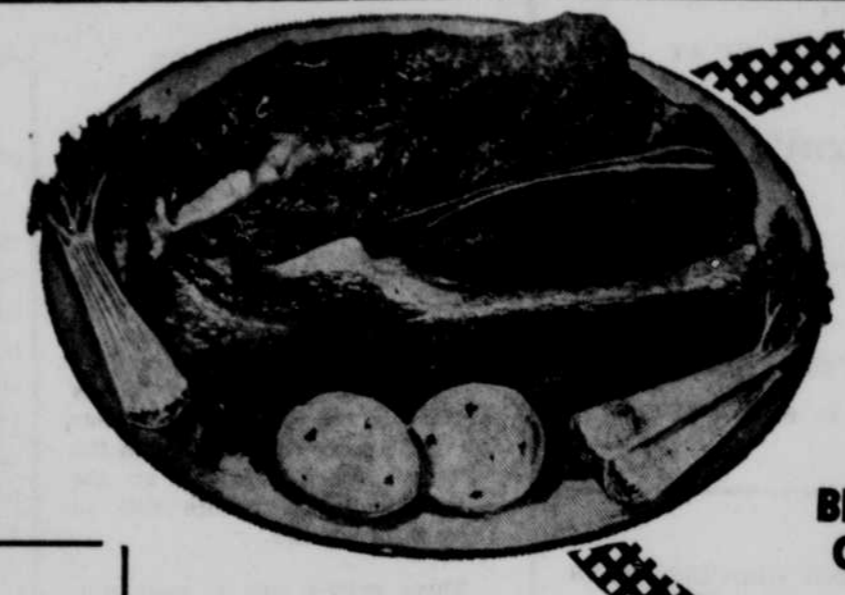
U. S. NO. 1 COLORADO ELBERTA FREESTONE  
**PEACHES 3<sup>98</sup>**  
 FULL BUSHEL

U. S. NO. 1 BARTLETT  
**PEARS 2<sup>98</sup>**  
 3/4 BUSHEL

# SMORGASBORD

CUDAHY'S GOLD COIN  
**Bacon**  
 2 LBS. \$1<sup>00</sup>

Cudahy's  
**SUMMER SAUSAGE** Lb. 59c



CORN FED BEEF...  
**CHUCK ROAST**  
 Blade Cut  
 lb. **39<sup>c</sup>**

CUDAHY'S  
**Wieners**  
 2 LB. BAG **85<sup>c</sup>**

TREAT YOURSELF...to tasty CUDAHY PURITAN Bologna...All Meat!  
 LB. **49<sup>c</sup>**

Lean Meaty  
**SPARE RIBS** . . . . . LB. 43c

Lean  
**BOIL BEEF** . . . . . LB. 29c

Dear Mr. and Mrs. O'Neill and Vicinity:

We of the New Outlaw Store, would like to take this opportunity to invite all our friends to our mammoth Smorgasbord. This is our way of showing our appreciation for all your past favors. Bring all the family and spend the evening with us as our guests. It's Open House and the treats are on us.

Very truly yours,  
**THE OUTLAW GANG**

PILLSBURY  
**Biscuits** CAN **7<sup>c</sup>**

**SPECIAL**  
  
**Folger's** **63<sup>c</sup>**  
 pound

**BE OUR GUEST!**  
 Delicious Folger's Coffee will be served!

All Flavors  
**BLUE BUNNY ICE CREAM**  
 HALF GAL. **69<sup>c</sup>**

**Blue RINSO**  
 Giant Size **69<sup>c</sup>**

All Flavors  
**Jell-O** 4 pkgs. **29<sup>c</sup>**

**CAMPBELL'S Vegetable Soup** 10 1/2-oz. Can **10<sup>c</sup>**

Luscious, Juice-Filled Tokay  
  
**grapes**  
 Lb. Only **10<sup>c</sup>**

Del Monte 5 14 oz. Bottles  
**CATSUP** . . . . . \$1.00

Royal Gorge Dill Qt. Jar  
**PICKLES** . . . . . 29c

Ronco 12 oz. Pkg.  
**MACARONI** . . . 10c

David Harum 3 lb. Sack  
**PANCAKE MIX** . 39c

Staley's Full Gal.  
**WAFFLE SYRUP** 1.49

Sunny Vale 5-2 1/2 Cans  
**PLUMS** . . . . . \$1.00

Payday Cut 6-303 Cans  
**GREEN BEANS** . 89c

Bakers Instant 2 lb. Box  
**CHOC. MIX** . . . 79c

Premium 10-303 Cans  
**PEAS** . . . . . 98c

Allens 4-303 Cans  
**BLACKBERRIES** . \$1

Allens 4-303 Cans  
**BOYSENBERRIES** \$1

Allens 303 Cans  
**TOMATOES** . . . 19c

**SNOW CROP CUT**  
  
**Corn** 10-oz. pkg. **19<sup>c</sup>**

Adams 4-6oz. Cans  
**ORANGE JUICE** . . 79c

**TOM THUMB**  
 Cherry - Apple - Peach  
**PIE**  
 3 for \$1.00

Sally Ann 3-12 oz. Pkgs.  
**STRAWBERRIES** 59c

**NOW VALID**  
 Your Coupon No. 4  
 WORTH 50c ON ANY  
 4 Place Setting of  
**Fine Quality Dinnerware**  
 BY MAR-CREST

**Red Potatoes** . . . . . 10 lb. bag **39<sup>c</sup>**

**Jumbo Head Lettuce** 2 heads **29<sup>c</sup>**

**Waxed Parsnips** . . . . . pkg. **23<sup>c</sup>**

Manchester Sandwich  
**Cookies**  
 2 LB. PKG. **49<sup>c</sup>**

**SATURDAY SEPT. 24**  
 From 5 p.m. to 10 p.m.

**ALWAYS THE BIGGEST FREE FEED IN O'NEILL**

Come and Enjoy A Meal on us

**2 LB. BOX 79<sup>c</sup>**

Kraft 30 oz. Pkg.  
**TRIPLE-TREAT CANDY** 69c

Kraft Sliced 8 oz. Pkg.  
**SWISS CHEESE** . . . . . 29c

Kraft 18 oz. Jar  
**BARBECUE SAUCE** . . . 39c

QT. JAR  
  
**49<sup>c</sup>**

KRAFT 20 oz. Jar  
**GRAPE JELLY** . . . . . 35c

12 oz. Jar  
**GRAPE PRESERVE** . . . 35c

20 oz. Jar  
**STRAW. PRESERVE** . . . 49c

8 OZ. PKG.  
  
**29<sup>c</sup>**

Kraft Deluxe Sliced American-Brick Pimento 8 oz. Pkg.  
**CHEESE** . . . . . 33c

**TANG PURE PORK EXTRA LEAN** 49c

**2 10 OZ. PKG. 35<sup>c</sup>**

Kraft 8 oz. Jar  
**ITALIAN DRESSING** . . 29c

Kraft 14 oz. Pkg.  
**PEANUT BRITTLE** . . . . 39c

**THE NEW OUTLAW**

Red Dot  
**POTATO CHIPS**  
 Jumbo Pkg. **59<sup>c</sup>**

Manchester  
**FIG BARS**  
 2 Pkg. **49<sup>c</sup>**

**Dr. Pepper**  
 6 Bottles For  
**43<sup>c</sup>**  
 Plus Deposit