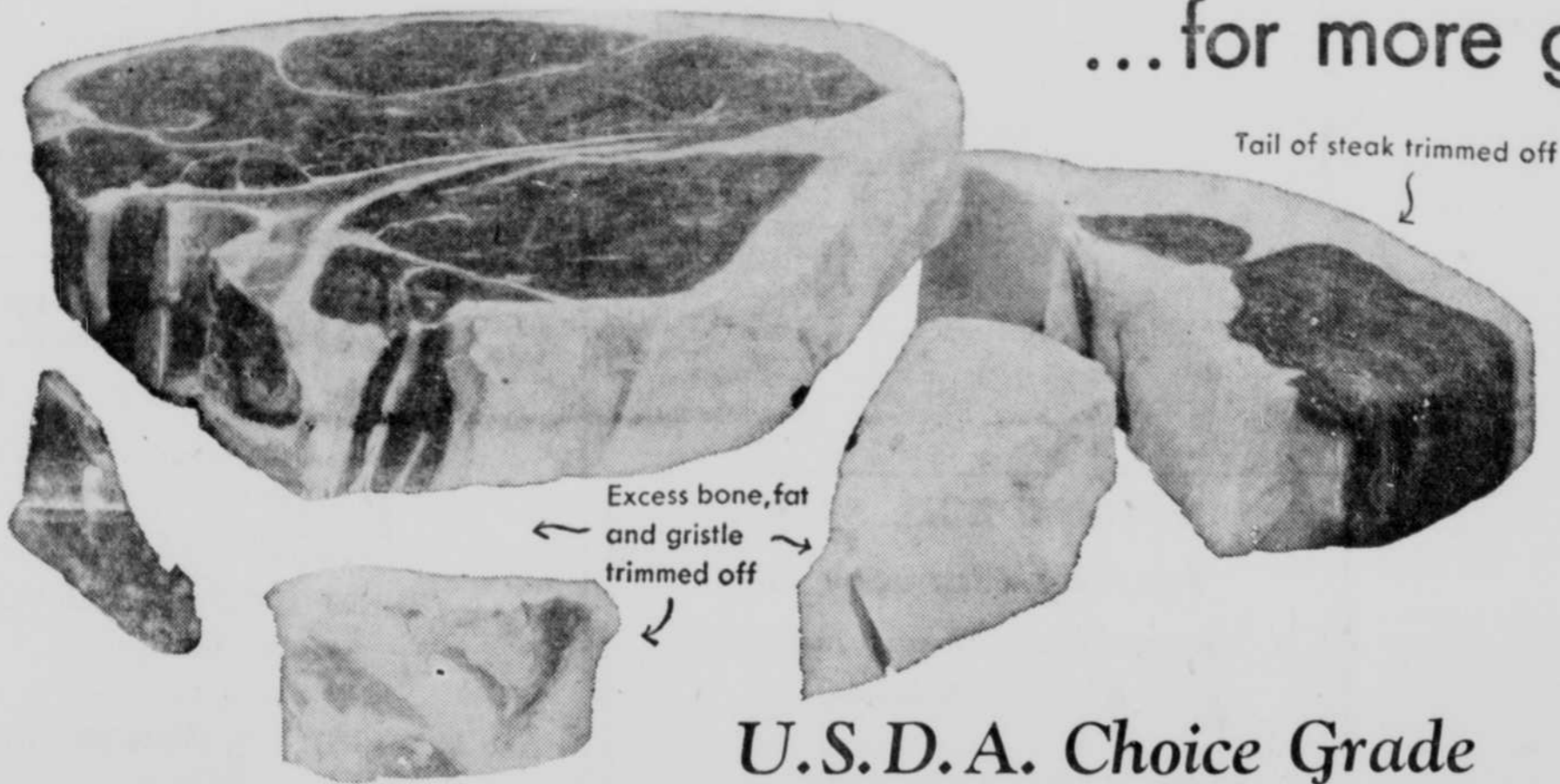


Another reason there's no place like **SAFEWAY** for **MEAT...**

CLOSE TRIMMED

...for more good-eating meat per pound!



There's a combination of things we do that make Safeway meats a better buy for you!

Safeway's "close-trim" method on every cut of meat always removes excess waste and fat... so you get more meat to serve for your food dollars. Compare our way of trimming meats... and you'll see why Safeway meats are a better buy... every time!

trimmed before weighing ...

The sketches below are graphic illustrations of how we trim Safeway meats to remove excess waste and fat before weighing.

SIRLOIN STEAK



RIB ROAST



LEG OF LAMB



RIB LAMB CHOPS



U.S.D.A. Choice Grade
T-BONE STEAKS
—or CLUB
Lb. 99¢

Tender and flavorful, carefully trimmed of excessive fat and bone

- SMOKED PICNICS** 6-8 lb. AVERAGE _____ Lb. **29¢**
- Sirloin Steak** U.S.D.A. Choice Grade Beef _____ Lb. **89¢**
- Boiling Beef** U.S.D.A. Choice Grade, plate, economical cut _____ Lb. **15¢**
- Chuck Roast** U.S.D.A. Choice 7-Bone Cut, Blade Cut, Lb. **45¢** ... Round Bone Cut, Lb. **59¢**

For a Lower TOTAL Food Bill... the place to remember is Safeway!

- Mushrooms** Royal Treat — whole, 4-oz. 29¢
3-oz. Can 29¢; Stems and pieces, Can 29¢
- Heinz 57 Sauce** Try it with Safeway steak 8-oz. Bottle **33¢**
- Worcestershire Sauce** French's Brand 5-oz. Bottle **25¢**
- A-1 Sauce** Delicious on Safeway steak 5-oz. Bottle **37¢**
- Mushroom Sauce** Dawn-Fresh Brand 2 5/8-oz. Bottles **23¢**
- Toilet Tissue** Northern — white or pastel colors 4-roll Pkg. **37¢**
- Deodorant** Florient, Aerosol kills offensive odors 5 1/2-oz. Can **79¢**
- Skylark Bread** Slender-way, fresh, sliced 16-oz. Loaf **19¢**
- Sweet Rolls** Curtsy — Cinnamon, regular 29¢ (Save 10¢) 12-oz. Pkg. **19¢**
- Dried Beans** Town House — Great Northern variety 2-lb. Pkg. **25¢**
- Sliced Cheese** Dutch Mill — American, Pimento or Swiss 8-oz. Pkg. **29¢**
- Ice Cream** Snow Star — Vanilla, Chocolate or Strawberry 1/2-gal. Carton **59¢**
- Chunk Tuna** Chicken of the Sea — light meat, fancy 6 1/2-oz. Can **35¢**
- Facial Tissue** Scotties soft, absorbant 400-tissue Box **29¢**



Mix 'em or Match 'em

Vegetables



Gardenside Brand — Peas, Cut Green Beans, Golden Cream Style Corn or Town House Brand — Whole Beets

10 No. 303 Cans **\$1**

Stock your cupboard this weekend with
Golden Poppy Boysenberries

5 No. 303 Cans **\$1**

Lemon, Oatmeal Pecan, Coconut, Sugar

MELROSE COOKIES

4 13 1/4-oz. Pkgs. **\$1**

A favorite lunch meat, delicious
CUDAHY TANG

3 12-oz. Cans **\$1**

Read the interesting articles on

"Mealtime is Family Time" in the January

Family Circle

Seedless Raisins

Town House — with nature's sweetness 2-lb. Bag **39¢**

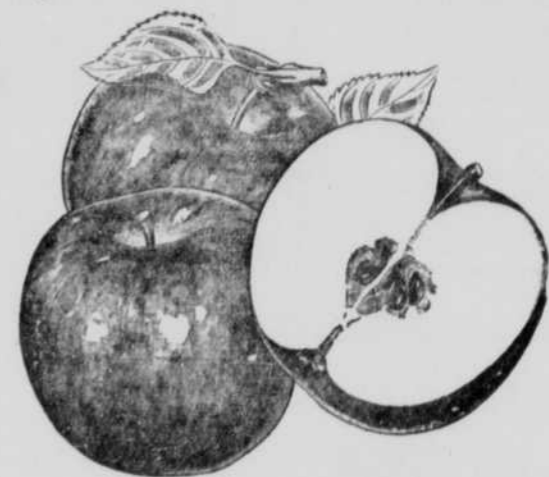
Quaker Oats

High in protein, Quick or Regular 42-oz. Box **39¢**

Extra fancy, Washington-grown, firm, juicy Winesap

APPLES

4-lb. Poly Bag **49¢**



California-grown, easy to segment Lb. **15¢**

Celery Hearts Fresh, crisp and crunchy Pkg. **29¢**

Yellow Onions U.S. No. 1 Grade, mild, medium size 3 lbs. **19¢**

MILK

NEW LOW PRICE

Free Gold Bond Stamps with your purchases from Safeway!

Lucerne Quart **23¢**
1/2 gal. **45¢**

Blossom Time 1/2 gal. **43¢**



RIGHT RESERVED TO LIMIT QUANTITIES
Prices effective thru Saturday, January 9, in O'Neill