



BIG BUYS ON BIG NAME BRANDS



This week the value spotlight is on the "Stars-of-the-Food-World" at Safeway!



★ Wilderness Brand Pie Filling

No. 2 Can

25¢

Cherry, Peach or Apple — fills a 9-inch pie

★ Skippy, Creamy or Chunk Peanut Butter

12-oz. Jar

39¢

Lunch Box Peanut Butter . . . 12-oz. Jar 35¢

★ Ballard or Pillsbury Biscuits

Sweet Cream or Buttermilk, 8-oz. Pkgs.

3 for 29¢

Mrs. Wright's sweet cream or buttermilk biscuits . . . 3, 8-oz. Pkgs. 25¢

★ Cudahy—Delicious

TANG

12-oz. Cans

8 for \$1.00

Grind it or slice it — a favorite lunch meat

- Drink Del Monte—Pineapple-Grapefruit, non-carbonated . . . 3 46-oz. Cans \$1
- Corn Libby's—Cream Style or Whole Kernel, Golden . . . 2 No. 303 Cans 35¢
- Spaghetti Franco-American, in delicious tomato sauce . . . 2 15½-oz. Cans 25¢
- Chunk Tuna Star-Kist—fancy light meat (Save 5¢) . . . 6½-oz. Cans 29¢
- Hershey's Cocoa . . . 1-lb. Pkg. 69¢
- Karo Syrup Red or Blue label, adds new delight . . . 1½-lb. Bottle 23¢
- Blackberries Sparklets brand—frozen, delicious . . . 2 10-oz. Cans 29¢
- Ice Cream Snow Star—Vanilla, Chocolate or Strawberry . . . ½-gal. Ctn. 59¢
- Waxed Paper Waxtite; keeps food fresher longer . . . 100-ft. Roll 19¢
- Toilet Tissue Northern—white or pastel colors . . . 4 Rolls 37¢

★ An All-Star Value on

CRISCO

3-lb. Can (Save 5¢)

85¢

Royal Satin Shortening — 3-lb. Can 79¢



BLUE BONNET MARGARINE
2 1-lb. **59¢**
Cartons

- Tomato Juice Diet Delight—contains no sugar . . . 2 12-oz. Cans 29¢
- Mushrooms Royal Treat—cut pieces and stems . . . 4-oz. Can 33¢
- Chocolate Syrup Cocoa Marsh—ice cream topping . . . 22-oz. Can 65¢
- Sandwich Cookies Busy Baker—fresh, delicious . . . 11½-oz. Pkg. 29¢
- Dressing Kraft's—Italian Style, for salads . . . 8-oz. Bottle 35¢
- Dog Yummies Hart's Mountain—for dogs and cats . . . 6-oz. Box 19¢
- Napkins Scotchkin—No. 88, luncheon size . . . 50-ct. Pkg. 18¢
- Paper Towels Northern—absorbent . . . 100-towel Roll 20¢

New Arrival at Safeway

NEW BR-R-AWNY OAT CEREAL

Kellogg's OKs

10½-oz. **25¢**
Pkg.

VALUE! . . . VALUE! . . . VALUE! . . .

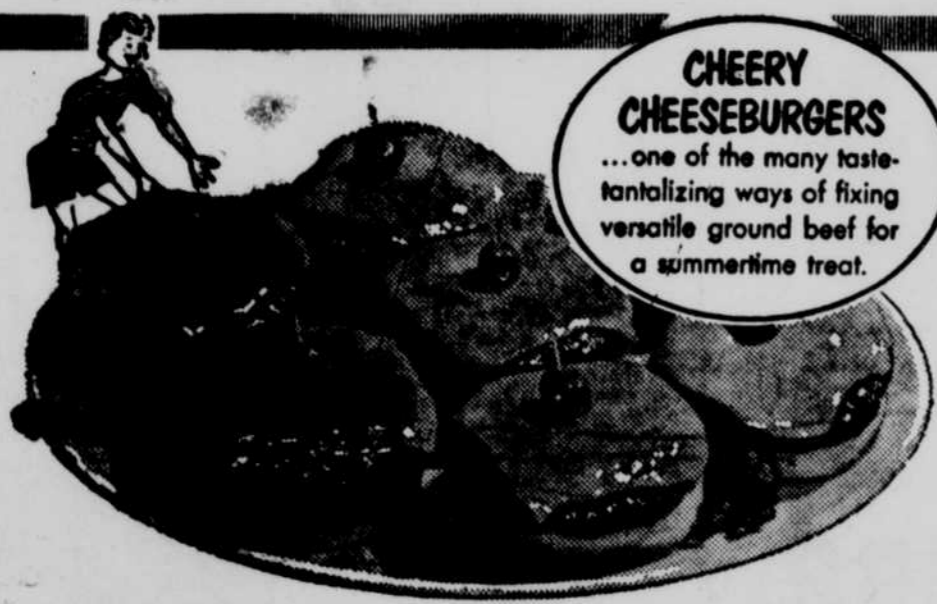
Fresh Eggs

Breakfast Gem; Small, Grade A **4 Doz. \$1.00**

Free!

350 GOLD BOND STAMPS

See the coupons on page 9 of this newspaper



CHEERY CHEESEBURGERS
...one of the many tantalizing ways of fixing versatile ground beef for a summertime treat.

Enjoy Safeway's Famous Quality

Ground Beef

Cooks the way good cooks want it, & eats the way food lovers like it.

Lb. 45¢

SAFeway MEATS are trimmed before weighing . . . so YOU SAVE MONEY!
RIB PORK CHOPS for example have tip end of shine bone removed. Excess fat gets trimmed off before weighing.



Now comes that grand fruit you like so well to eat —

Colorado-grown, Elberta, Freestone

PEACHES

Golden flesh is firm, unblemished, crammed with juice. Every peach is ripened bluish-red on the tree.

\$1.79
16-lb. Lug

- Dates California-grown, for salads or dainty confections . . . 1-lb. Unpitted 29¢ or 10½-oz. Pitted
- Head Lettuce Firm, crisp, clean, fresh and well trimmed . . . Lb. 15¢
- Cauliflower Every dinner needs a hot vegetable dish . . . Large Head 29¢
- Red Potatoes U.S. No. 1 Grade, size "A" . . . 10-lb. Bag 39¢

MR. CLEAN

28-oz. **73¢**
Bottle

"Mr. Clean gets rid of dirt and grime and grease in just a minute."



- Rib Steak U.S.D.A. Choice Grade Bone-in, 79¢ Beef, . . . Boneless, Lb. 99¢
- Turkeys Frozen, U.S. Inspected, 6 to 8-lb. Average . . . Lb. 39¢
- Bacon Canadian Style, Piece, Cudahy's or Armour's . . . Lb. 79¢ Sliced, 89¢
- Bologna Large, Cudahy Puritan or Safeway . . . Sliced, Lb. 49¢ By the Piece, Lb. 39¢

SAFeway

Prices effective thru Saturday, August 29, in O'Neill