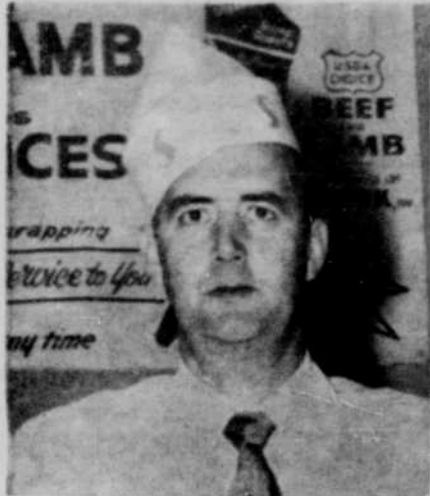


# There's no place like SAFEWAY for **ROUND STEAK**

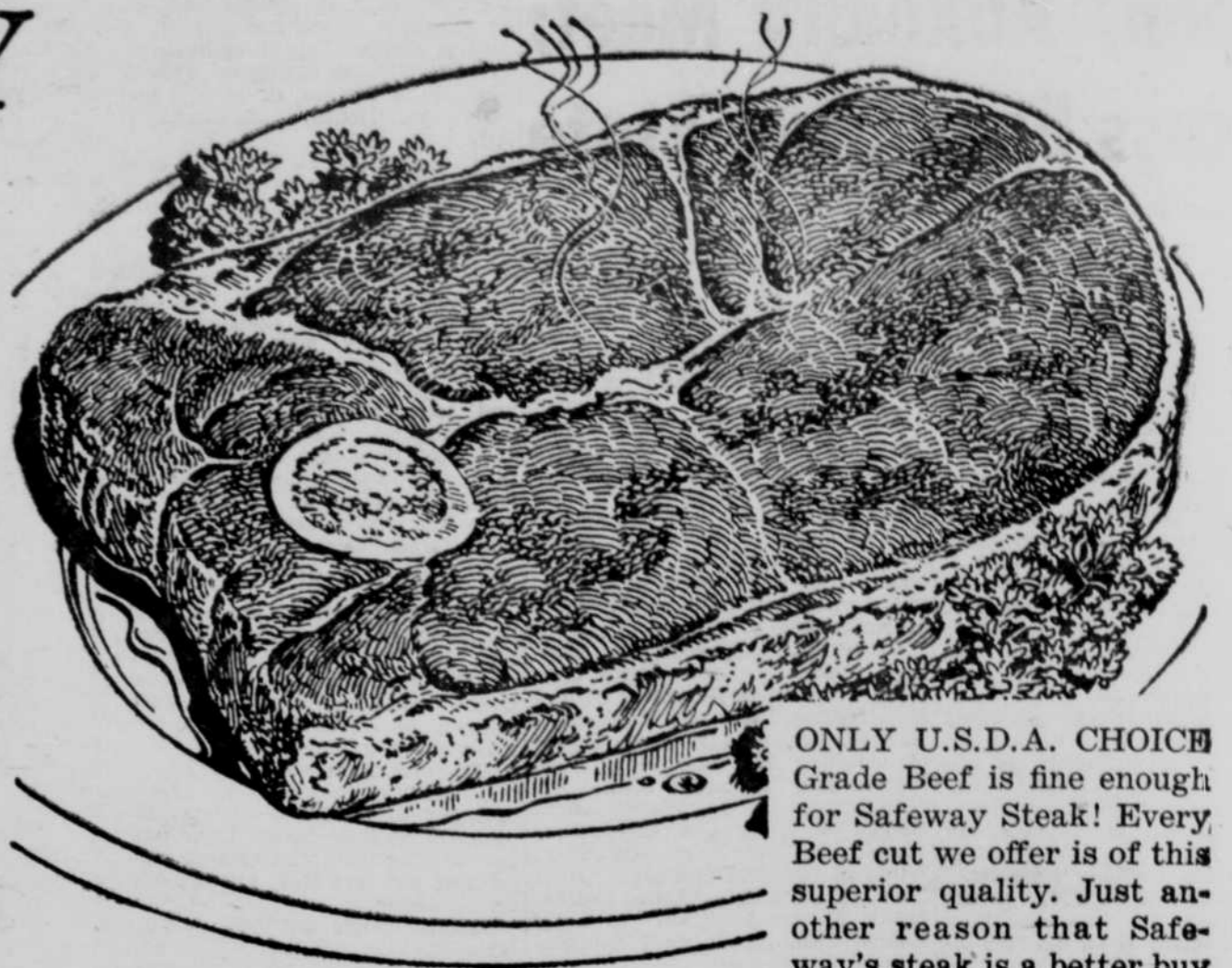
—or SWISS—tender, juicy, U.S.D.A. Choice Grade Beef!



Ivan Harley

What a nice feeling to know that each time you serve a steak (or any meat) IT WILL TASTE JUST RIGHT. That's the kind of assurance you get with every cut of Safeway meat. To make you as confident as we are, Safeway promises 100% satisfaction or refund of your full purchase price.

# 79¢ lb.



ONLY U.S.D.A. CHOICE Grade Beef is fine enough for Safeway Steak! Every Beef cut we offer is of this superior quality. Just another reason that Safeway's steak is a better buy for you!

Always look to Safeway for the value on —

## BEEF SUGAR

10-lb. Bag **89¢**

Wonderful for home-baking recipes that call for flour

## KITCHEN CRAFT FLOUR

5-LB. BAG **45¢**      10-LB. BAG **89¢**

★ Have you tried this all-purpose, enriched flour? You don't know what you've been missing. Kitchen Craft Flour is the premium quality flour guaranteed to work wonders with all your recipes. It's specially milled for exclusive use in home baking. Try it this week-end. It's a Safeway Guaranteed Product.

# POTATOES

**10 LBS 69¢**

★ Delicate-flavored NEW Red potatoes — all U.S. Number One Grade — clean, smooth and shallow-eyed (so there's practically no waste). Safeway buyers select the "A" size, about 2 inches in diameter eliminating annoying pee-wees. A top buy any way you want to cook them. Try serving 'em French-fried with Safeway's tender steaks.

**NEW CABBAGE** **5¢**  
Green, medium size heads, for cole slaw.....Lb.

**SUNKIST ORANGES** **12¢**  
Valencia Variety, from California, large....Lb.

**RED PLUMS** **23¢**  
California grown, sweet, juicy.....Lb.



**Peach Treat!** Luscious shortcake—created quickly by you, from baking mix, whipped cream, and fresh peaches. One of many peach delights!

- |                |   |                |             |     |
|----------------|---|----------------|-------------|-----|
| Cottage Cheese | Lucerne; 12-oz. Grade-A                                       | 19¢            | 32-oz. Ctn. | 43¢ |
| Half & Half    | Lucerne; top sliced fresh peaches and add sugar               | 1-pt. Carton   |             | 30¢ |
| Lucky Whip     | Top your peach shortcake for a delicious dessert              | .9½-oz. Carton |             | 49¢ |
| Shortcakes     | Hostess; soft, tender, for fresh peach shortcake              | 4-cup Pkg.     |             | 20¢ |
| Cake Mix       | Duncan Hines — Angel Food (Special "save 4¢" pack)            | 17-oz. Pkg.    |             | 49¢ |
| Cookies        | Supreme; Pecan Sandies, eat 'em with fresh peaches, delicious | 1-lb. Pkg.     |             | 49¢ |
| Skylark Bread  | Slender-Way, special price this week, save 4¢                 | 16-oz. Loaf    |             | 19¢ |

REFRESHING SUMMER DRINK

## Hi-C

Vitamin C Enriched

ORANGE GRAPE PINEAPPLE-GRAPEFRUIT **3 for 89¢**

Mix 'Em Too!!

## MRS. WHIGHT'S BREAD

20-oz. Loaf **19¢**



Sandy Saver says: **SAVE as you spend ...with**

**GOLD BOND**

Stamps from Safeway

RIGHT RESERVED TO LIMIT QUANTITIES

**PORK CHOPS** **59¢**  
Rib Center Top Grade, Loin Center Cut, Lb. 69¢ Out, Lb.

**Beef Front Quarters** **41¢**  
USDA Choice, cut, wrapped & sharp froz. Lb.

**SALMON STEAKS** **59¢**  
Captain's Choice; frzn., pan-ready, 14-oz. Pkg.

**BACON CANADIAN STYLE** **89¢** Piece, **79¢** Lb.  
Ready-to-Eat, ... sliced, Lb. Armour Star or Cudahy Puritan brand

Superior quality — Lucerne Party Pride

## ICE CREAM

½-gal. Carton **79¢**

Try the new Chocolate Nut and Peach flavors plus 10 other delicious flavors

Save money with Gardenside standard quality

## Vegetables

**4 No. 303 Cans 45¢**

Sweet Peas, Cream Style Golden Corn, Cut Green Beans or Tomatoes

Facial quality, soft, white or colored, Charmin

## Toilet Tissue

**12 89¢**  
650-sheet Rolls



# SAFEWAY

Prices effective thru Saturday, July 18, in O'Neil