

Ainsworth Again Victor Over O'Neill

The Ainsworth Bulldogs knocked off the O'Neill high Eagles, 11-5, Tuesday night on the Ainsworth rink—the second win of the season over O'Neill for the Bulldogs.

The Bulldogs enjoyed fat second and third periods. Nelson of Ainsworth amassed 25 points. O'Neill reserves won a 45-44 thriller with Jim McClellan and Larry Godel getting 13 apiece. Boxscore of main event:


O'Neill (55)	fg	ft	pf	pts
Bob Eby	5	0	3	10
Larson	2	0	4	4
McClellan	0	2	1	2
Donlin	4	3	2	11
Smith	2	2	5	6
Kurtz	2	0	5	4
Kupetka	0	0	1	0
Bob Eby	0	0	0	0
Oetter	4	6	3	14
Ermer	1	0	1	2
Dexter	1	0	0	2
Totals	21	13	25	55

Ainsw. (71)	fg	ft	pf	pts
Sauer	2	1	3	5
Michael	0	0	1	0
Smith	7	11	4	25
Chalks	0	3	2	17
Smith	0	1	0	0
Nelson	7	11	4	25
Herring	0	1	0	1
Yocum	3	1	4	7
Speerman	1	1	0	3
Jacobs	1	0	2	2
Mondhenke	3	1	2	7
Voss	2	0	4	4
Morgan	0	0	0	0
Totals	26	19	19	71

WD—Ralph B. Dalley to Mary M. Dalley et al 1-31-55 \$41,920—SW 1/4 Sec 4 All 9 NW 1/4 10-27-12.

WD—Robert Asher to William J. Scherman and wife 1-3-59 \$4,700—Same lots as above.

SEE Bankerslifeman—
Ernie Brinkman
IN ATKINSON



About an income plan for accident or sickness

BANKERS LIFE COMPANY
SEE BROKER, 1938

Mrs. John D. Holliday Expires in Hospital

ORCHARD—Mrs. John D. Holliday, 73, prominent Orchard woman, died Friday, January 23, in a Norfolk hospital where she had been in failing health the past three years. She suffered a stroke Wednesday, January 21.

Funeral services were conducted at 2 p.m. Monday, January 26, at Evangelical United Brethren church in Orchard with Rev. Duane Lentz officiating, assisted by a former pastor, Rev. Walter Millet of Cedar Bluffs.

Burial was in the family plot in the Orchard cemetery.

Active pallbearers were Holliday, Dewaine Williamson, Lathrop Billings and Johnny Eley. Honorary pallbearers were Alfred Nelson, Alfred Cleveland, John Steinberg, Lewis Omev, John Auman and D. E. Conner.

Flowergirls were Mary Conner, Edna Sherer, Lulu Robinson, Minnie Robertson and Grace Miller. Catherine Mary Eichler, better known as Cassie, was born on a farm near Newark, Wis., the daughter of Christian and Mary Eichler. She was one of a family of eight children. Her mother died at a relatively young age. The children were placed in homes of relatives and friends and Cassie came to Nebraska to make her home with her uncle and aunt, Joseph and Catherine Meuret, at the age of seven.

Although she was a cousin of the five Meuret children, she was accepted as a sister. She attended rural school in district 30, northwest of Orchard, and was reared in the Meuret neighborhood.

On April 26, 1906, she was united in marriage with Mr. Holliday. They became the parents of three children—all of whom were near her when she died.

The late Mrs. Holliday was a member of the EUB Ladies Aid until her health forced her to become inactive, and she was a charter member of the HYOJA club. She became an honorary member of the latter club about five years ago.

After coming to Orchard in 1939, the Hollidays made their home a beauty spot with an abundance of flowers.

In April, 1956, Mr. and Mrs. Holliday celebrated their 50th wedding anniversary.

Survivors include: widower—John; sons—Lloyd and Thomas of Orchard; daughter—Mrs. Harold (Eva) Billings of Orchard; sister—Mrs. Edna Kraemer of South Beloit, Ill.; seven grandchildren and six great grandchildren and a sister-in-law, Mary Holliday of O'Neill.

Among those attending the funeral were from Los Angeles, Calif., South Beloit, Ill., Sioux City, Ia., Beemer, Burwell, Norfolk, Amelia, O'Neill, Neligh, Atkinson, Brunswick, Royal, Ewing, Page, Napier, Verdigré, Plainview Clearwater and Elgin.

Inman Cops Holt Cage Title Again

Tigers Need Sudden Death Inning to Subdue O'Neill High Finals

A second overtime period and sudden death were needed Friday night as the Inman high Tigers, representing the smallest high school in the county, picked the O'Neill high Eagles, 47-45, to capture the 1959 Holt county cage crown. O'Neill high has the largest high school in Holt.

O'Neill gained the finals by defeating Stuart and Page. Coach Bill Miller's Inman kids eliminated Atkinson and then ousted Ewing in the semifinals.

O'Neill was ahead with three seconds remaining in the regular playing time. Burt Smith put a fielder which knotted the count and sent the crowd into a frenzy.

Dick Appleby, outstanding Inman ballhawk, connected with the winning fielder in the second overtime, scoring from under the basket.

Coach Bill Edwards' personality needed the tourney crown to compensate for having won only one game thus far in regular season play.

Inman built a 10-point lead in the third period.

During the first overtime each club managed two points making it 45-45.

Ewing bested Page, 44-42, for third place with Larry Rotherham scoring 17 points for the winners. Dennis Kemper tallied 17 for Page.

Page (42)	fg	ft	pf	pts
Kemper	7	5	3	17
Cork	0	2	3	2
Cronk	1	2	4	4
Nissen	0	0	0	0
Simmons	1	0	1	2
C. Parks	5	2	5	12
K. Parks	1	0	1	3
Ickes	1	0	3	2
Totals	16	19	20	42

Ewing	fg	ft	pf	pts
Cloyd	5	0	4	10
Thoendel	1	1	0	3
Rotherham	4	9	0	17
Eacker	3	0	2	6
L. Hahlbeck	3	1	4	7
J. Hahlbeck	0	1	1	1
Totals	16	12	14	44

Semifinals

Inman 50; Ewing 30

Dick Appleby paced the Inman win over the Ewing Tigers, 50-30. Appleby racked up 23 points and turned in a splendid floor game.

Inman was never really pressed by Ewing, which had whizzed past Chambers and Atkinson St. Joe in tourney outings earlier in the week.

Inman annexed 16 out of 33 gratis tries; Ewing converted 12 out of 25. Boxscore:

O'Neill (50)	fg	ft	pf	pts
Bill Eby	0	0	0	0
Larson	6	0	2	12
Bob Eby	8	0	4	16
Ermer	0	0	0	0
Oetter	6	2	0	14
Donlin	1	0	2	2
Kurtz	0	0	4	0
Smith	2	2	2	6
Totals	23	20	14	50

Page (36)

Page (36)	fg	ft	pf	pts
Kemper	2	3	2	7
Cork	1	0	1	2
Cronk	0	1	0	1
Nissen	1	2	4	4
Simmons	1	0	5	2
Ickes	4	3	2	11
Parks	4	1	5	9
Totals	13	10	14	36

O'Neill 50; Page 36

Bob Eby with 16, Larry Oetter with 14 and Jim Larson's 12 were big factors in O'Neill high's vanquishing of the stubborn Page high Eagles in Thursday's other semifinal show.

O'Neill won, 50-36, and held the command all the way. Boxscore:

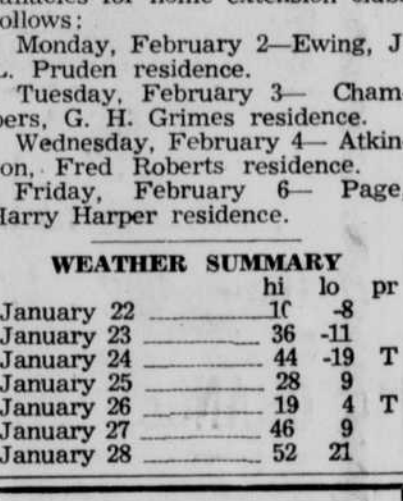
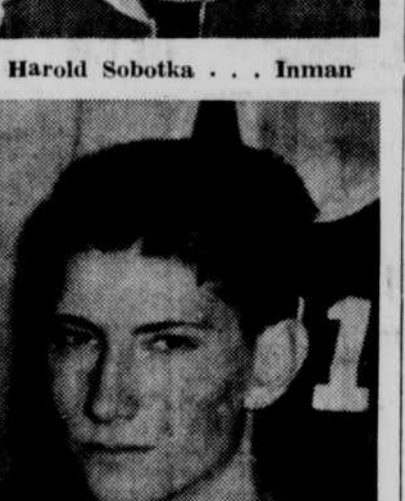
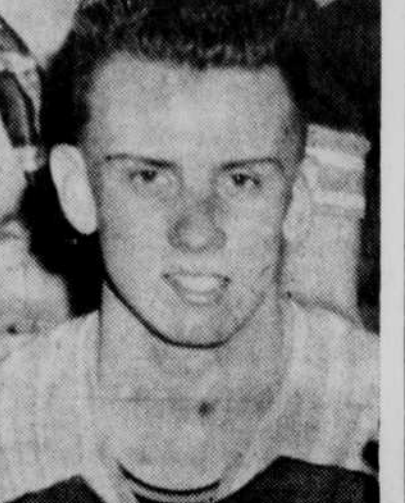
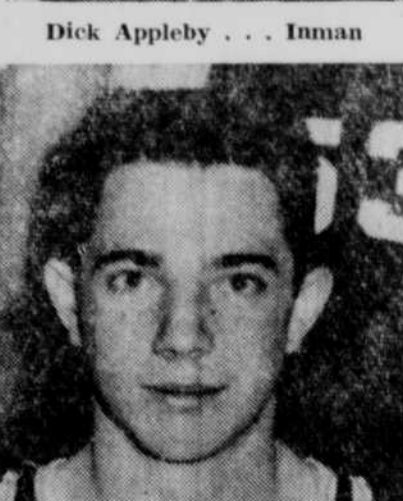
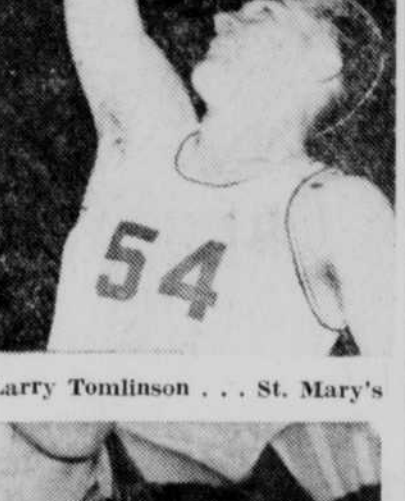
Inman (50)	fg	ft	pf	pts
Sobotka	4	5	2	13
Gilgley	0	0	1	0
Delong	0	0	0	0
Appleby	9	5	2	23
Smith	2	0	2	4
Kivett	0	3	1	3
Ruther	1	1	2	3
Gaughenbaugh	1	2	3	4
Tomkins	0	0	4	0
Kopejtko	0	0	1	0
Totals	17	16	18	50

Ewing (30)	fg	ft	pf	pts
Parks	1	3	5	5
Bauer	0	2	0	2
Hahlbeck	4	2	4	10
Cloyd	1	1	2	3
Rotherham	3	3	0	9
Larson	0	0	2	0
J. Hahlbeck	0	5	0	0
Eacker	0	1	4	1
Thoendel	0	0	2	0
Wright	0	0	0	0
Totals	9	12	24	30

Dr. Donald E. David
OPTOMETRIST
Eyes Examined
Glasses Fitted
Phone 2101 Spencer

All-Tourney Team

The Frontier's all-Holt county mythical cage team picked by the tourney officials and coaches in cooperation with The Frontier sports department are pictured below:



Tom Cunningham and Dick Appleby (33) receive the Holt county tournament's championship trophy from tourney Director M. J. Baack following Friday night's Inman win over O'Neill in the title game.—The Frontier Photo.

An Equation for Buying Diamonds

If Ignorance Equals Fear
Then
Knowledge Equals Confidence

Our knowledge of diamonds results from intensive study and is backed by the use of approved laboratory instruments. We have eliminated the error and guess work from diamond grading. Through our presentation of knowledge and facts you can overcome fear and gain confidence in diamond buying. Our laboratory equipment and knowledge is at your disposal at absolutely no obligation.

McINTOSH JEWELRY

407 E. Douglas Phone 166
A Trusted Jeweler Is Your Best Advisor

Schedule Revised —
The revised schedule for the training lessons on food facts and facilities for home extension clubs follows:
Monday, February 2—Ewing, J. L. Pruden residence.
Tuesday, February 3—Chambers, G. H. Grimes residence.
Wednesday, February 4—Atkinson, Fred Roberts residence.
Friday, February 6—Page, Harry Harper residence.

700 Good Cattle Expected Today

We're expecting about seven hundred cattle today, mostly calves and yearlings. Hog sale will start at 12 o'clock noon.

Cattle consignments include 20 choice Holstein milk cows from Gary Lockman at Stuart; 60 Hereford stock cows from one consignor; 35 Hereford cows from another; 44 yearling steers weighing about 750 lbs.; 20 yearling steers; 25 whiteface calves; 30 whiteface calves; 20 black calves; lots of other consignments ranging from 10 to 25 head—mostly calves and yearlings.

O'NEILL LIVESTOCK MARKET

PHONE 2
Vern & Leigh Reynoldson

SAVE 20% Every ELGIN

First Time in Elgin's 90-Year History!

Lady Elgin NOW ONLY \$57.20
22 jewels Reg. Price \$71.50

SPENCER NOW ONLY \$52.00
19 jewels Reg. Price \$65.00

DARLINGTON NOW ONLY \$31.00
17 jewels Reg. Price \$37.75

20% OFF Original Price Tags

For St. Valentine's Day gift-giving

Mid-Winter Clearance AT McINTOSH JEWELRY

	REGULAR	SALE
LAZY SUSANS	5.50 to 6.00	4.00
JEWEL CHESTS	6.00	3.95
Italian Glass—ASH TRAYS	5.00	3.95
TID-BIT SERVERS		
China	4.00	3.00
Pottery	5.95	3.95
NEBR. ASH TRAYS	2.00	1.25
Hand-Painted, 1 Plate, 1 Cup		
SNACKED, 1 Set	1.50	1.10
Girls' Genuine Leather—CLUTCH PURSES	3.95	2.95

Revelation SILVER PLATE

50-Pc. Set for 8	6.95
Reg. 13.95—SALE	
26-Pc. Set for 6	3.95
Reg. 6.95—SALE	

	REGULAR	SALE
JEWELRY	Up to 5.00	1.00
Odd Lot of—LADIES' RINGS	2.50	1.00

Off - Season Sale!

COMMUNITY SILVER—Morning Star 52-Pc. Set, reg. 101.50—SALE	59.95
HOLMES & EDWARDS, Spring Garden 52-Pc. Set, service for 8	49.95
1881 ROGERS—Enchantment 52-Pc. Set	69.95
1887 ROGERS—Remembrance 52-Pc. Set	59.95
COMMUNITY—Bridal Wreath 52-Pc. Set	59.95

A special invitation from O'NEILL'S newest Chrysler dealer



In the style that set the standard for an industry: Chrysler Windsor 2-Door Hardtop

We're pleased and proud about our recent appointment as Chrysler dealers. And we're hoping everybody will pay us a visit during our Opening Days celebration. You'll meet an alert staff ready to provide quick, expert, courteous service.

And, you'll meet the lion-hearted Chrysler '59. Try its smooth, effortless Golden Lion V-8 power and silent Push Button TorqueFlite transmission. Inspect its youthful interiors, its gleaming Lustre-Bond finish and the style that set the standard for an industry.



Charles Thelander



Kloth Thelander

Come in anytime. Bring the family. Let's get acquainted!

THELANDER AUTO

217 South Fourth St., O'Neill