

## Open Class

(Continued from page 12.)

Towel, guest	.65
Towel, tea set	.65
Wall Panel	.65
Window Curtains, 2	.65
E—SOFA PILLOW:	

Appliqued	1st	.65
Crocheted		.65
Cross Stitched		.65
Embroidered		.65
Organdy		.65
Patch Work		.65

### Knitting

Afghan	1st	1.25
Bags, cotton, silk, or wool		.65
Bedsread		1.25
Beret and Scarf		.65
Dress, child's		.65
Dress, lady's		.65
Gloves or Mittens		.65
Lace, 1 yard or more		.65

### Quilts

Applique	1st	1.25
Cotton Patch Work		1.25
Cross Stitch		1.25
Outline Work		1.25
Worsted Patchwork		1.25

### Rugs

Braided	1st	.65	2nd	.35
Crocheted		.65		.35
Fluff		.65		.35
Hooked		.65		.35
Indian Tied		.65		.35
Knit		.65		.35

New Art (made with crocheted crochet-like needle)	.65	.35
Singer Craft	.65	.35
Tufted Waffle Weave	.65	.35
Woven, by hand	.65	.35
Woven, by hand loom	.65	.35

### Hand Craft

Basketry		
Baskets, any size	.65	.35
Tray	.65	.35

Flowers		
Corsage, any medium	.65	.35
Chenille	.65	.35
Nylon	.65	.35
Paper	.65	.35
Wood Fiber	.65	.35

Leather Craft		
Handbag	1.25	.35
Belt or Billfold	.65	.35

Metal Craft		
Etching, aluminum or copper	.65	.35
Hammered aluminum or copper	.65	.35
Tooled, aluminum or copper	.65	.35

Painting		
China	.65	.35
Dish (not real china), glass or metal, by brush	.65	.35
Dish (not real china), glass or metal, by tube	.65	.35
Picture, oil paint, free hand	.65	.35
Picture, oil paint, prepared canvas	.65	.35
Picture, watercolor	.65	.35

## FLOWERS

### Junior Division

All entries must be grown by exhibitor. Place specimens in milk bottles or fruit jars.

#### Section A

Specimens—5 Stems	1st	2nd
Zinnia, giant	.65	.35
Zinnia, dwarf	.65	.35
Marigolds, giant	.65	.35
Marigolds, giant	.65	.35
Cosmos	.65	.35
Petunia, ruffled	.65	.35

#### Section B—Arrangements

All Vegetables	.65	.35
Fruit and Flowers, combination	.65	.35
Humorous, featuring vegetables	.65	.35
Babes in the Woods, composition	.65	.35

(4-H starts on page 15.)

## All Roads Lead

... to ...

## CHAMBERS

During Fair Week!



Close teamwork between roper and horses is the most important requirement for successful calf roping—as Holt county fairgoers will be able to see for themselves during the two night rodeo shows.

## Roper's First Need Is Good Horse

### Burst of Speed Is Required

No single rodeo event displays as many of the cowboys' skills as does calf roping. In 15 seconds or less, you'll see how well a horse can be trained and ridden, how well a man can handle a rope and tie a kicking calf, and how well horse and man can work together as a team.

Most of the work it takes to be a successful calf roper is seen by rodeo spectators since it is done long before the chute gate opens and the calf streaks across the arena.

No roper would invest an entry fee without having a good roping horse, and the horses you'll see in this event are some of the best-trained working horses in history.

Fast and intelligent, they are trained from the best quarter horse stock.

They have the quick burst of starting speed—necessary to come right up on the running calves—that is characteristic of their breed. They are trained to follow the calf through every twist or turn, holding their position just behind it and a little to one side to give the roper the best chance to throw his loop.

At a signal from the roper, they'll stop on a dime, sitting back on their haunches and braking with all four feet as the cowboy steps out of the saddle to run down the rope. Then, without a rider, they stand alertly facing the calf, backing slightly to keep the rope taut but never dragging the calf.

Contest calf roping is a timed event and frequently several hundred dollars depend on the saving of a split second. You'll see how the teamwork between horse and cowboy is polished in this event to machine-like smoothness.

At most rodeos all calves are given a head start determined by the size of the arena and other conditions. The officials who work the event are a scoreline judge, a field judge and two timers.

When the calf is out of the chute and has crossed the scoreline, the scoreline judge drops his flag to signal the starting of time and pulls the rope barrier from in front of the box where the roper waits. If the contestant starts out of the box before the calf crosses the scoreline, he breaks the barrier and a 10-second penalty is added to his time.

Once out of the box, the horse closes on the calf as quickly as possible. As soon as he's in range the roper lets fly with his loop—usually from about 12 feet away. The rules are catch as catch can, which means the roper may catch the calf any way he can—around the head, feet or body—as long as the loop is out of his hand

when it catches and holds until the roper gets to the calf.

As soon as the rope has settled on the calf, the cowboy throws away the slack and swings his weight into the left stirrup. The horse stops, taking all the slack out of the rope; the rider dismounts and runs down the rope.

The calf must be thrown by hand and if it has accidentally been jerked off its feet, the roper must let it up.

He tosses the calf on its back, gathers any three feet and ties them with a short pigging string, using two quick wraps and a half hitch. His movements are lightning fast, ending in a signal that he has finished.

Before his time is recorded, however, the field judge rides over to be certain that the tie is secure. If the calf gets loose before the field judge has approved the tie, the contestant is given no time.

The roper is allowed to throw two loops, provided he carries two ropes. If he misses with both he must retire from the arena with no time.

### Attends Alliance Meet at Planning

ATKINSON — Mrs. Robert Martens returned Friday after having attended a three-day planning meeting of officers of the Federated Woman's club, Sixth district.

Preparations were made for the convention to be held at Ogalalla September 18-20.

Mrs. Robert Spooner of Scotia, district treasurer, accompanied Mrs. Martens, who is district secretary.

### POPULATION INCREASES

The population has increased so rapidly in America that there are now about seven times as many Americans as there were a century ago.

## Porter's Transfer

Chambers, Nebr.

PHONE 2241

- General Hauling
- Freight Hauling

## Many Top Rodeo Contestants Coming

### \$1,000 Purse Posted for 5 Events

Many of the nation's top rodeo contestants will be at the Holt county fair to participate in the two rodeo performances under the lights. Rodeo dates are Wednesday and Thursday, August 15 and 16.

The rodeo stars will be trying for the one-thousand-dollar purse posted for the five RCA events. Winners will add to their point totals, which will count toward the totals for individual contestants under the point award system adopted by the Rodeo Cowboys' Association, Inc.

Walter Plugge, the widely-known Wheeler county producer and Nebraska's only RCA-approved producer, once again will direct the show. All of the stock to be shown already has been contracted.

Five events will be saddle bronc riding, bareback riding, bull riding, calf roping and steer wrestling.

"Stillwell Shorty," nationally-famous rodeo clown, will go through his usual bag of tricks—some of which are mighty dangerous. (For a story on "Shorty", turn to page 11.)

The rodeo arena at the fair grounds has been steadily im-

proved down through the years. Enormous crowds gather for the rodeo performances—a marked increase in attendance was noted after the rodeos were switched from afternoon to evening showings.

Large floodlights illuminate the arena.

Mr. Plugge always makes an extra effort to please his neighbors—Holt countyans.

Last year, Americans ate 26.8 billion pounds of meat—or an average of 161 pounds for each person.

## Ewing LIVESTOCK MARKET

Phones 19 & 70

SALES EVERY MONDAY

LET US try your next consignment and thus you can join our growing list of satisfied customers.

WE APPRECIATE your business and assure you absolute satisfaction.

**MAX and BUW WANSER**  
—Managers—

## McINTOSH Jewelry

GIFTS for all occasions

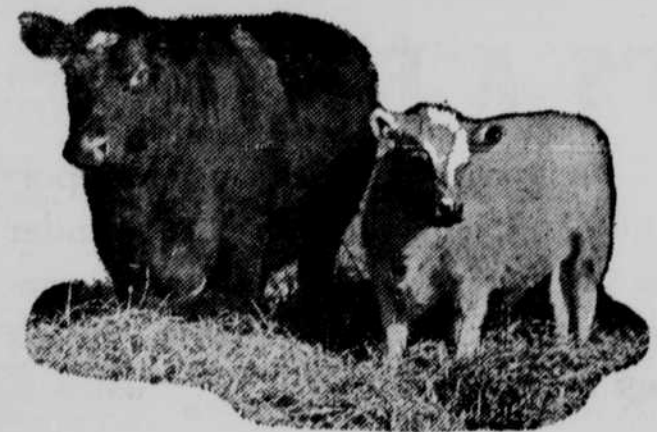
O'Neill—Phone 166

"Where Price and Quality Meet"

## CONGRATULATIONS

TO THE

## 1956 FAIR



## DR. G. R. COOK

VETERINARIAN

Graduate Licensed

OFFICE PHONE: 576  
RANCH PHONE 3-F11

FIRST NATIONAL BANK BLDG. — O'NEILL