

4-H (Continued)

(Continued from page 17)

Frozen Food

Whole meal (this entry shall contain 5 frozen foods to help make up a complete entry. A menu showing other foods necessary to supplement the frozen foods will accompany the exhibit written on a 4 x 6 card)1.50 \$1.75

3 vegetables (3 varieties of frozen vegetable will be entered in duplicate. 1 package will be opened and judged for quality, 1 used for exhibit. This will make 6 packages)1.00 .75 .50

3 fruits (3 varieties of frozen fruit will be entered in duplicate. 1 package will be opened and judged for quality, 1 used for exhibit. This will make 6 packages)1.00 .75 .50

Poultry, 2 packages75 .50 .35

Bird Club

(Choose any 2) B R W
Bird house65 .50 .35
Picture display of birds65 .50 .35
Bird lunch counter65 .50 .35

Entomology

Collections: Exhibit to consist of at least 25 different kinds (species of Nebraska insects. Specimens to be mounted properly and labeled correctly. (Duplicate insects may be included but will not receive credit toward the requirements.) Blue, \$1.50; red, \$1; white, .75.

Equipment: Used in collecting and mounting insects: A net, a killing jar, and a mounting block. Blue, .75; red, .50; white, .25.

Fix-It

(Choose any 3) B R W
Homemade game75 .50 .25

Repaired article75 .50 .25
Homemade puzzle75 .50 .25
Repaired garment75 .50 .25

Farm Forestry

(Choose any 2) B R W
Leaf, twig and seed collection1.00 .75 .50
Farmstead planting arrangement1.00 .75 .50
Poster, how to plant trees75 .50 .25

Garden

Garden display of any 3 of the following (limited to one collective entry), blue, \$2; red, \$1.50; white, \$1.
Carrots, plate of 6; beets, plate of 6; tomatoes, plate of 6; turnips, plate of 6; potatoes, plate of 6; corn, 6 ears; onions, plate of 6; string beans, plate of 12; vine crops, 2.

Rope

Display of splices, hitches and knots75 .50 .25
Rope halter75 .50 .25

R.E.A.

(Choose any 2) B R W
Connection and splice display75 .50 .25
Electric motor75 .50 .25
Line tester75 .50 .25
Safety display75 .50 .25

Soil Conservation and Crops
(Choose any 2) B R W
Mounted grass collection1.00 .75 .50
Sheaf grains1.00 .75 .50
Grass seed collection1.00 .75 .50
Threshed grain (1 gal.)75 .50 .25

Tractor

Record of tractor (performance and fuel, oil and grease)1.00 .75 .50
Display of carburetion or ignition system1.00 .75 .50

Yard Beautification I
(Choose any 3) B R W
Sketch of home grounds at start of project and a sketch showing improvements to be made75 .50 .25
Scrapbook showing at least 5 species of trees, 5 species of shrubs and 10 pic-

tures of annual flower75 .50 .25
Handicraft article (per project book)

Plant markers, set of 375 .50 .25
Birdhouse or feeder75 .50 .25
Nail keg seat75 .50 .25

Yard Beautification II
(Choose any 2) B R W
Sketch showing improvements made75 .50 .25
Handicraft (per project book)

Portable picnic table1.00 .75 .50
Wild flower collection75 .50 .25
Trash burner75 .50 .25

Woodworking
(Choose any 2) B R W
Woodworking requirements (group of)1.00 .75 .50
Tool box or board1.00 .75 .50
Accident prevention board1.00 .75 .50

Photography B R W
Scrapbook of pictures taken in project, including pictures of animals, person, landscapes75 .50 .25

4-H Bee Keeping B R W
Honey display75 .50 .25

Junior Leadership
(Open only to those actually enrolled in this project)
A display showing junior leadership activities the exhibitor has done to help his or her club program. Blue, 75; red, .50; white, .25.

Miscellaneous B R W
Poster75 .50 .25
Secretary book75 .50 .25
Scrapbook of 4-H projects75 .50 .25
News articles (3 mounted on 1 sheet of paper with date published)75 .50 .25

Photography B R W
Scrapbook of pictures taken in project, including pictures of animals, person, landscapes75 .50 .25

4-H Bee Keeping B R W
Honey display75 .50 .25

Junior Leadership
(Open only to those actually enrolled in this project)
A display showing junior leadership activities the exhibitor has done to help his or her club program. Blue, 75; red, .50; white, .25.

Miscellaneous B R W
Poster75 .50 .25
Secretary book75 .50 .25
Scrapbook of 4-H projects75 .50 .25
News articles (3 mounted on 1 sheet of paper with date published)75 .50 .25

Photography B R W
Scrapbook of pictures taken in project, including pictures of animals, person, landscapes75 .50 .25

4-H Bee Keeping B R W
Honey display75 .50 .25

Junior Leadership
(Open only to those actually enrolled in this project)
A display showing junior leadership activities the exhibitor has done to help his or her club program. Blue, 75; red, .50; white, .25.

Miscellaneous B R W
Poster75 .50 .25
Secretary book75 .50 .25
Scrapbook of 4-H projects75 .50 .25
News articles (3 mounted on 1 sheet of paper with date published)75 .50 .25

Photography B R W
Scrapbook of pictures taken in project, including pictures of animals, person, landscapes75 .50 .25

4-H Bee Keeping B R W
Honey display75 .50 .25

Junior Leadership
(Open only to those actually enrolled in this project)
A display showing junior leadership activities the exhibitor has done to help his or her club program. Blue, 75; red, .50; white, .25.

Miscellaneous B R W
Poster75 .50 .25
Secretary book75 .50 .25
Scrapbook of 4-H projects75 .50 .25
News articles (3 mounted on 1 sheet of paper with date published)75 .50 .25

Photography B R W
Scrapbook of pictures taken in project, including pictures of animals, person, landscapes75 .50 .25

4-H Bee Keeping B R W
Honey display75 .50 .25

Junior Leadership
(Open only to those actually enrolled in this project)
A display showing junior leadership activities the exhibitor has done to help his or her club program. Blue, 75; red, .50; white, .25.

Miscellaneous B R W
Poster75 .50 .25
Secretary book75 .50 .25
Scrapbook of 4-H projects75 .50 .25
News articles (3 mounted on 1 sheet of paper with date published)75 .50 .25

Photography B R W
Scrapbook of pictures taken in project, including pictures of animals, person, landscapes75 .50 .25

4-H Bee Keeping B R W
Honey display75 .50 .25

Junior Leadership
(Open only to those actually enrolled in this project)
A display showing junior leadership activities the exhibitor has done to help his or her club program. Blue, 75; red, .50; white, .25.

Miscellaneous B R W
Poster75 .50 .25
Secretary book75 .50 .25
Scrapbook of 4-H projects75 .50 .25
News articles (3 mounted on 1 sheet of paper with date published)75 .50 .25

Photography B R W
Scrapbook of pictures taken in project, including pictures of animals, person, landscapes75 .50 .25

4-H Bee Keeping B R W
Honey display75 .50 .25

Junior Leadership
(Open only to those actually enrolled in this project)
A display showing junior leadership activities the exhibitor has done to help his or her club program. Blue, 75; red, .50; white, .25.

Miscellaneous B R W
Poster75 .50 .25
Secretary book75 .50 .25
Scrapbook of 4-H projects75 .50 .25
News articles (3 mounted on 1 sheet of paper with date published)75 .50 .25

Photography B R W
Scrapbook of pictures taken in project, including pictures of animals, person, landscapes75 .50 .25

4-H Bee Keeping B R W
Honey display75 .50 .25

Junior Leadership
(Open only to those actually enrolled in this project)
A display showing junior leadership activities the exhibitor has done to help his or her club program. Blue, 75; red, .50; white, .25.

Miscellaneous B R W
Poster75 .50 .25
Secretary book75 .50 .25
Scrapbook of 4-H projects75 .50 .25
News articles (3 mounted on 1 sheet of paper with date published)75 .50 .25

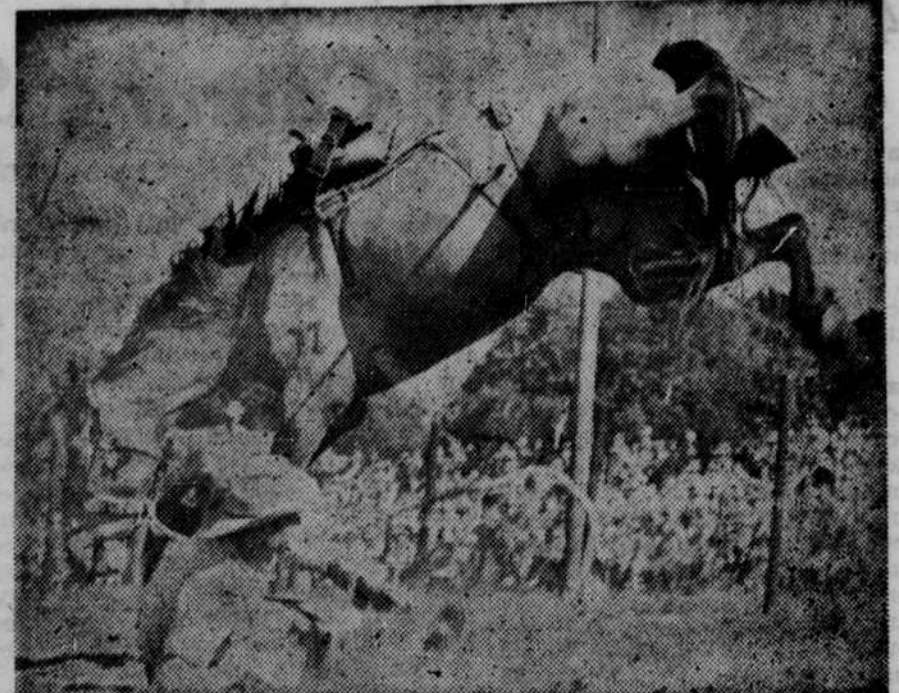
Photography B R W
Scrapbook of pictures taken in project, including pictures of animals, person, landscapes75 .50 .25

4-H Bee Keeping B R W
Honey display75 .50 .25

Junior Leadership
(Open only to those actually enrolled in this project)
A display showing junior leadership activities the exhibitor has done to help his or her club program. Blue, 75; red, .50; white, .25.

Miscellaneous B R W
Poster75 .50 .25
Secretary book75 .50 .25
Scrapbook of 4-H projects75 .50 .25
News articles (3 mounted on 1 sheet of paper with date published)75 .50 .25

Photography B R W
Scrapbook of pictures taken in project, including pictures of animals, person, landscapes75 .50 .25



This is a scene from last year's rodeo at the Holt County Fair. Some performers who appeared here a year ago will be returning and already have filed their entries.

Durre Service

Featuring CHAMPLIN Petroleum Products

Groceries — Ice Cream — Pop

Batteries — Tires

On Highways 281-95 Phone 2204

C. E. WINTERMOTE & SON

Blacksmithing & Welding

— CHAMBERS —

Specializing in Hay Moving Equipment

Use L-P GAS

for

- Heating
- Cooking
- Refrigeration
- Water Heaters
- Furnaces
- Space Heaters

Bottles and Tanks

Installed and Serviced

DANKERT'S SERVICE

O'Neill Phone 410 — Chambers Phone 2101

ALWAYS USE

Mobilgas . . . and . . . Mobiloil

BATTERIES — TIRES

In Chambers — On State Highway 95

Congratulations

To the 1955 Holt County Fair!

Enroll NOW

for your Budget Dressmaking Course

— at your —

SINGER SEWING CENTER

Phone 247 O'Neill

Bergstrom Oil

DUNLOP TIRES

GRANT BATTERIES

Phone 90-W Ewing, Nebr.

CONGRATULATIONS TO THE FAIR!

Horner Lumber Company

★ BUILDING MATERIALS

★ BUILDERS' HARDWARE

★ MINNESOTA PAINTS

Atkinson — Phone 6121

K & M CAFE

"Food at Its Finest"

Homemade Pies

Phone 249 O'Neill, Nebr.

Dakotan Signed as Rodeo Announcer

Lyle Graves of Rapid City, S.D., veteran rodeo announcer, has been signed to perform at the rodeo and cutting horse contest, which will be features of the 1955 Holt County Fair.

Graves has worked some of the larger rodeos, including the Black Hills Round-up, Custer (S.D.) Gold Discovery Days, Sundance (Wyo.) Rodeo and the South Dakota State High School Rodeo.

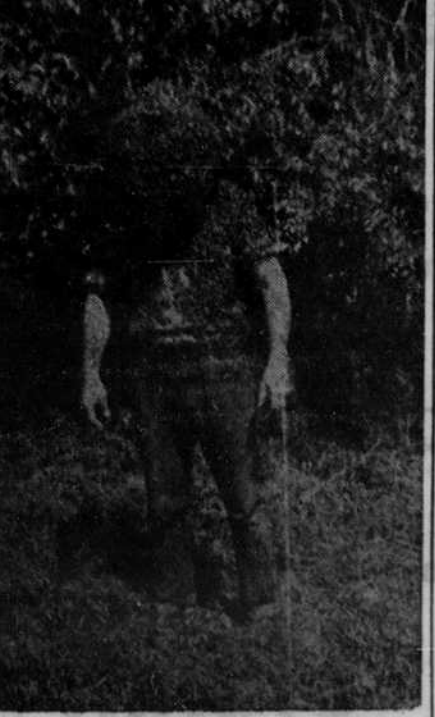
Beekeepers Hold Picnic at Neligh

The Nebraska State Beekeepers' picnic was held at the park in Neligh on Sunday, July 17. The Martin brothers were the hosts. There were 64 adults registered and no count of the children.

Mrs. LeRoy Reents of Lincoln was elected queen of the Nebraska Honey Producers association. She will be crowned at the state convention in Lincoln in November.

Door prize was won by Walter Wolvin of Primrose.

Mrs. J. C. Higgins of South Sioux City, Harold Miller of O'Neill and Harry Moore of Beatrice were each winners of a box of wax foundation given by the Sioux Bee association.



Dale Bellin, 21, of O'Neill . . . demonstrates bee handling.