

MD Sufferer, 13, Has Art Talent

By MRS. N. D. ICKES, SR.,
Special Feature Writer

PAGE—November was designated as muscular dystrophy placed on the growing need for (MD) month. Emphasis was the funds for research and for aiding those patients who have become victims of the dread disease.

Eldon Henderson, 13, son of Mr. and Mrs. Forrest Henderson, residing 4 miles east and 1½ miles south of Page, is Holt county's special interest in muscular dystrophy.

They say the victim is born with the disease. It is generally understood the age of outbreak and the swiftness with which total disability comes to its victims is problematical. One theory holds that lack of assimilation of proper vitamins from food may play an important part.

As a rule, the first symptoms are lack of control of the limbs, partial loss of eyesight, impaired speech and general disability follows swiftly.

In Eldon's case, when he was 4 he had the uncontrolled stagger of the proverbial "drunken sailor." By the time he was 9 he was a wheelchair invalid.

Eldon walked to school the first two years and, as he gradually became more helpless, he was taken by car. Finally, the teacher asked for a wheelchair of some kind so that he might be cared for more easily at school.



Eldon Henderson . . . used to walk to school.

Mr. Henderson fashioned a crude wheelchair from a common chair, a pair of bicycle wheels and some strong reinforcement timber. Eldon still prefers this chair to the one that later was purchased for his use.

This fall the Hendersons realized that it had become physically impossible for Mr. Henderson to get Eldon back-and-forth to school, so with the full cooperation of the school board, county superintendent and the state education department, they have taken advantage of a provision for handicapped children of school age who are capable of learning.

This provides private instruction for four 45-minute periods per week. The expense is assumed by the Emporia school district. The cost of education in that district per capita will be deducted from the total cost and the state will pay the excess up to \$400.

With a school of 28 pupils, it was impossible to give much individual help. While they deplore the lack of outside interest, it is

proving "quite satisfactory."

The Hendersons feel if Eldon never has any more than this year's private tutoring it has been worthwhile for the added incentive the boy has received compared to the disadvantages he had in the crowded school room.

Eldon is not classified in a specific grade level and he proceeds at the pace which he is most capable. His teacher, Cecil Wattermann, who is the regular teacher in district 57, places an emphasis on reading and art in an effort to create an interest. All regular subjects are taught, some moving along "very slowly."

Since he was a very small child, Eldon has been interested in drawing. Like others, who have a special interest in the work, he also evidenced a type all his own. The same style has prevailed through the years. It seemed to me, as I looked at what he had done, that he strives to present his subject in motion—not as an assembly line project—but as a car or tractor (his favorite subjects) moving along. He achieves the effect a movie is able to create in the illusion "moving along."

He also does precision drawing very well in spite of the limitation his trouble places on free movement of his hands. Cecil encourages effort work and brings in various types of material in the hope that Eldon will try to copy some of them.

Religion and education both stress the worth of the individual and it is the goal toward which dedicated workers in both fields strive to give to the handicapped an interest that will stand them in good stead and be sufficient against the time when this wall of reserve they have helped to build will have become all the defense they have to carry them through the rough going ahead. An interest strong enough and vital enough to place personality above circumstance and allow those who have been permitted to contribute their bit to feel that they also have profited much from the effort.

The Hendersons feel they have had the splendid cooperation of neighbors, friends, relatives and all those from whom they have had help. The teachers and county superintendent are constantly on the lookout for material they think might be helpful in his case.

As she travels here and there, Miss Alice French, Holt county superintendent, is mindful of Eldon's need for low-level work with a high-level interest—subjects that might coax him to investigate on his own and make the necessary effort to show marked improvement.

So little has been done in the field of muscular dystrophy that otherwise famous clinics do not even staff a doctor in that field. So little research has been done that woefully meager effort has been expended either in the prevention or the treatment of the disease.

There are three projectors in Holt county to serve all of the schools. Miss French is sure that Eldon will have the benefit of visual aid when Cecil Wattermann has the projector to use in his school and she will try to get some slides of special interest to him.

As is the history of a handicapped person, one of the senses is over-stimulated to compensate for the one lost or impaired. In Eldon's case, his hearing has become supersensitive, allowing him to locate sound more accurately than others. He can tell what model car or tractor is passing, knows by the flicker of the light when it is time for his mother to take the water to the separator room, and when to let the dog out to take the cows to the field. Such training of the senses helps him, in part, make up for the loss of motion.

Since there is no helping hand reaching out to give muscular dystrophy patients the help they require, it is up to the local peo-

ple to generate an interest in the problem and to organize and insist upon, through cooperation, help on an equal footing with polio and tuberculosis sufferers.

There are many demands made upon our generosity. But we cannot conscientiously fulfill our obligations to the handicapped with the coin we drop into the container provided and placed in public places or with the check we place in the envelope we receive in the mail.

The shut-in and the handicapped in your locality provide a personal challenge to each individual to perform that personal service which will brighten the day, provide a passing interest or lighten the burden of those who are responsible for their welfare.

Realizing that the next muscular dystrophy case in your locality may be a member of your own family, a victim of that insidious, creeping, crippling, killing, dread disease, won't you try to stretch your dollar to include a contribution to the muscular dystrophy fund?

Fred Peterson Buys Clearwater Record

CLEARWATER — The Clearwater Record in mid-November carried the announcement that former Elgin Review Publisher Fred Peterson had purchased the Clearwater newspaper, effective with that issue, from Mr. and Mrs. M. H. Snider. Mr. Peterson was also publisher of the Madison Star-Mail for several years. The Sniders will still be connected with the paper, the announcement stated.

Peterson is a brother of Former Gov. Val Peterson, who is now civil defense administrator.

Frontier for printing!

Tolerance Used to Increase Load

State Engineer L. N. Ress announced today an analysis has been made of the weighing station operation since it was taken over by the department of roads and irrigation in June.

Of the \$10,363 trucks weighed, 1.2 percent were in violation. An average of all the scales show that 7.3 percent were operating within the five percent tolerance on axle and the three percent on gross. An analysis made earlier in the year from October, 1953, to March, 1954, showed 2.7 percent of the trucks weighed were in violation and 8.7 percent were within the tolerance. Thus, there has been a reduction of 1.5 percent in arrests and 1.4 percent in the number of trucks within the tolerance. Basic reasoning behind the tolerance law, LB 114, was to give the trucker latitude by taking into account unforeseen contingencies such as ice and snow and load shifting which might cause his load to weigh over the legal limit. Consequently, the number of truckers operating within the tolerance should be the difference between the number that were in violation before the tolerance law went into effect and those now in violation.

Prior to the passage of the bill only 3.2 percent of the truckers weighed violated the 18,000 pound limitations. During the past five months 1.2 percent have been in violation. Consequently two percent of the trucks should now be operating within the tolerance provided by law. However, records show that 7.3 percent are in tolerance. It would appear tolerance provisions are being used to up pay loads.

(First pub. Nov. 18, 1954) Julius D. Cronin, Attorney NOTICE TO CREDITORS

Estate No. 4003
In the County Court of Holt County, Nebraska, November 12, 1954. In the matter of the Estate of Clyde O. Johnson, Deceased. CREDITORS of said estate are hereby notified that the time limited for presenting claims against said estate is March 9, 1955, and for the payment of debts is November 12, 1955, and that on December 9, 1954, and on March 10, 1955, at 10 o'clock A.M., each day, I will be at the County Court Room in said County to receive, examine, hear, allow, or adjust all claims and objections duly filed.

LOUIS W. REIMER,
County Judge.
(COUNTY COURT SEAL) 29-31c

(First pub. Nov. 18, 1954) Julius D. Cronin, Attorney NOTICE OF PROBATE OF WILL

Estate No. 4009
COUNTY COURT OF HOLT COUNTY, NEBRASKA. ESTATE OF LOTTIE THOMPSON, DECEASED. THE STATE OF NEBRASKA, TO ALL CONCERNED: Notice is hereby given that a petition has been filed for the probate of the will of said deceased, and for the appointment of James T. Thompson as Executor thereof, which will be for hearing in this court on December 9, 1954, at 10 o'clock A.M.

LOUIS W. REIMER,
County Judge.
(COUNTY COURT SEAL) 29-31

Alice's Beauty Shop
Phone 266 — O'Neill
(In Former Apparel Shop Location)

(First pub. Nov. 18, 1954) Elmer C. Rakow, Attorney NOTICE FOR PETITION FOR ADMINISTRATION

Estate No. 4008
In the County Court of Holt County, Nebraska, November 13, 1954. In the Matter of the Estate of Lottie Thompson, Deceased. Notice is hereby given to all persons interested in said estate that a petition has been filed in said Court for the appointment of Darlene Cooper as Administratrix of said estate, and will be heard December 9, 1954, at 10 o'clock A.M., at the County Court Room in O'Neill, Nebraska.

LOUIS W. REIMER,
County Judge.
(COUNTY COURT SEAL) 29-31

PAUL SHIERK
INSURANCE AGENCY
O'NEILL, NEBR.
Insurance of All Kinds
Bus. Ph. 430
Res. Ph. 235

Rural & City
PHILLIPS "66" PRODUCTS
New & Used Tires
Greasing & Washing

BORG & WORTH
Prompt Tankwagon SERVICE
Phillips "66" Station
Phone 362

EXECUTOR'S SALE

DECEMBER 7TH, 1954, 1:00 P.M.

Courthouse
O'Neill, Nebraska

Southwest Quarter Section 27, and East Half of Southeast Quarter Section 33, in Township 29, North, Range 9, West 6th P.M. in Holt County.

To settle the estate of Verna E. Harris, Deceased, the undersigned Executor will offer the above described real estate at public auction, and sell the same to high bidder, subject to confirmation of owners. Terms of sale: 20% of bid at sale, balance in cash upon confirmation and delivery of deed. Possession given March 1, 1955. Abstracts of title furnished to show merchantable title.

This farm is situated 3½ mi. north and 3 mi. east of Page, Nebraska. Land consists of good hard grass pasture, spring watered; cultivated land runs medium to good; 40 acres of hay. Buildings and improvements are in fair condition. REA available. Standard School on premises. Situated in a good community and served by good roads.

Glenn Harris, Executor
Page, Nebraska

BIGGEST CAR, BIGGEST BUY OF THE LOW-PRICE 3



ALL-NEW

PLYMOUTH '55

COME IN TODAY! SEE IT! DRIVE IT!...The big swing is to Plymouth

CHOICE OF TOP POWERPLANTS

- 177 hp...Hy-Fire V-8 engine with PowerPak†
- 167 hp...Hy-Fire V-8 engine
- 157 hp...Hy-Fire V-8 engine
- 117 hp...PowerFlow 6 engine

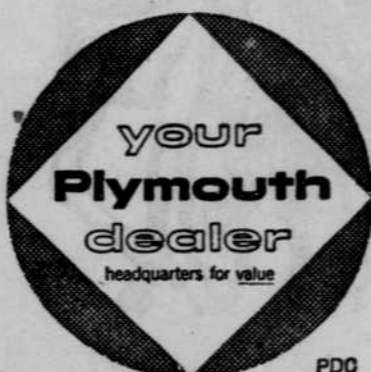
†4-barrel carburetor at low extra cost. All powerplants available with PowerFlite, Overdrive or Synchro-Silent transmission.

- Powerful new Hy-Fire V-8 and PowerFlow 6 engines
- New Metal-in-Motion Styling
- PowerFlite*... finest no-clutch transmission made, with Flite-Control Drive Selector on the instrument panel
- New Full-View Windshield, swept-back, really lets you see
- Full-time Power Steering* • Wide-pedal Power Brakes*
- Tubeless tires standard

*Optional equipment at low extra cost. Don't miss the Thanksgiving Day football classic: Detroit Lions-Green Bay Packers. See your Radio-TV listings.

SHIERK MOTOR CO.

212 So. Fourth St. — O'Neill



PUBLIC AUCTION

HAVING DECIDED to quit farming and go into the implement business at Chambers, Nebr., I will offer the following described personal property at public auction, on the premises, located 1 mile west of Inman, OR 7 miles southeast of O'Neill on U.S. Highways 20-275, on —

FRIDAY, DECEMBER 10TH

Starting at 12:30 P.M.

Lunch Will Be Served

- | | | | | |
|---|---|-----------------------|---|-------------------------------|
| 45 | - | Head of CATTLE | - | 45 |
| 3—Milk COWS, milking now
(2 Brown-Swiss, 1 Roan) | | | | 4—Bucket CALVES, age 4-months |
| 27—Stock COWS | | | | 1—Hereford BULL, 4-yrs.-old |
| 10—Stock CALVES | | | | 1—Riding HORSE, well-broke |

Machinery Equipment & Etc.

- | | | |
|----------------------------------|---|------------------------------------|
| IHC Model H Tractor, 1952 | Overshot Hay Stacker on rubber | Some Fire Wood |
| IHC Model B Tractor, 1948 | Hydraulic Dirt Mover on rubber | IHC Stationary Engine |
| IHC F-12 Tractor | 8-Ft. Disc | 6—Bluegrass Strippers |
| Ford Tractor, 1937 | Walking Plow | Hay Cage |
| Ford Scraper | 2-Section Drag | Dehorning Chute |
| Ford Plow | Horse Cultivator | 1,500-Watt 110-V. |
| Pump Jack | 300-Gal. Fuel Tank on Stand | Kohler Light Plant, good condition |
| 2-Bottom Tractor Plow | 5—55-Gal. Barrels | DC Farm Welder |
| Good Set Harness, Collars | 5—15-Gal. Barrels | 3-Rake Hitch |
| Rubber-Tired Wagon and Grain Box | 3—Feed Bunks | 3—1951 12-Ft. Hay Rakes |
| Heavy Duty Cabling | Some Lumber, Tools, Woven Wire, Steel Posts | Power Mower for IHC H, 7-ft. |
| Rack on rubber dual tires | Great Western Manure Spreader | Trail Mower with Hitch, 7-ft. |
| Steel Water Tank, 8-ft. | Ruber-Tired Wagon and Hay Rack | IHC B Power Mower, 7-ft. |
| Steel Water Tank, 10-ft. | | IHC B Cultivator |
| Good Model A Hay Sweep | | Winch for IHC H |

About 100 Tons of Hay . . . 30 Spring Pullets . . . Many Other Items

Household Goods, Etc.

- | | | |
|----------------------------|--------------------------|---|
| Oil Space Heater | Day Bed | IHC 110 Cream Separator, elec. motor built in |
| Dining Room Table | Carpet Sweeper | DeLaval Milking Machine |
| One-Minute Washing Machine | Some Miscellaneous Tools | |

TERMS: CASH. No property to be removed until settled for

GLEN A. BURGE, Owner

COL. ED THORIN, O'Neill, Auct.

O'NEILL NAT'L BANK, Clerk