

# Holt County Agricultural Society

## OFFICERS

VERN SAGESER, Amelia	PRESIDENT
STEVE SHAVLIK, Chambers	VICE-PRESIDENT
EDWIN A. WINK, Chambers	SECRETARY
LLOYD GLEED, Chambers	TREASURER

## DIRECTORS

Lloyd Gleed	Chambers
Henry Wood	Ewing
Harry Ressel	O'Neill
C. V. Robertson	Chambers
George Rowse	Chambers
T. E. Alderson	Chambers
Steve Shavlik	Chambers
Vern Sageser	Amelia
Ray Hoffman	Chambers

## SUPERINTENDENTS

Henry Wood	Livestock
Mrs. C. V. Robertson	Flowers
Mrs. Loa Hubbard	Needle Art
Neil Dawes	4-H Club
Carl Lambert	Farm Produce
Mrs. Paul Roth	Pantry Stores

## JUDGES

### LIVESTOCK

Laurance Buhler	Seward, Nebr.
Jess Kovanda	Ord, Nebr.

### 4-H PROJECTS

Mrs. Lloyd Hahn	Polk, Nebr.
Mrs. Powell	Polk, Nebr.

### FARM PRODUCE

H. A. Miller	Albion, Nebr.
--------------	---------------

### NEEDLEWORK & PANTRY STORES

Mrs. Leo T. Corcoran	St. Edward, Nebr.
----------------------	-------------------

## RULES AND REGULATIONS

- Exhibitors, with the exception of open class livestock, will be furnished with an exhibitor's ticket without cost, which will let them enter their exhibits, but which will not be good for admission to the grounds.
- Exhibitors in open class livestock will be charged a nominal entry fee of \$1.00 and issued an exhibitor's ticket which will admit the exhibitor to the grounds.
- A stall fee of 50 cents per single stall will be charged.
- Membership tickets are good for one year.
- Only half premiums will be awarded on anything not listed in this list.
- All stock must be entered on or before Tuesday, September 1, 1953.
- Entries of cut flowers will be accepted for entry until Wednesday, September 2, at 9:00 a.m. No other entries can be made after 11 a.m., same day.
- The books will be open for entry articles one month before the Fair, and blanks for the entries will be mailed on application to the Secretary of the Board.
- Proofs of breeding of all purebred animals must be furnished if required.
- No animal or article shall be allowed to compete on more than one premium, except on sweepstakes and special premiums.
- An exhibitor attempting to interfere with the judges will be promptly excluded from the competition.
- Diligence will be used by officers of the Board to prevent injury to animals or articles on exhibition, but they will not be

(Continued on page 5.)

## MARCELLUS IMPLEMENT CO.

Phone 5

West O'Neill

**ALLIS-CHALMERS**  
SALES AND SERVICE

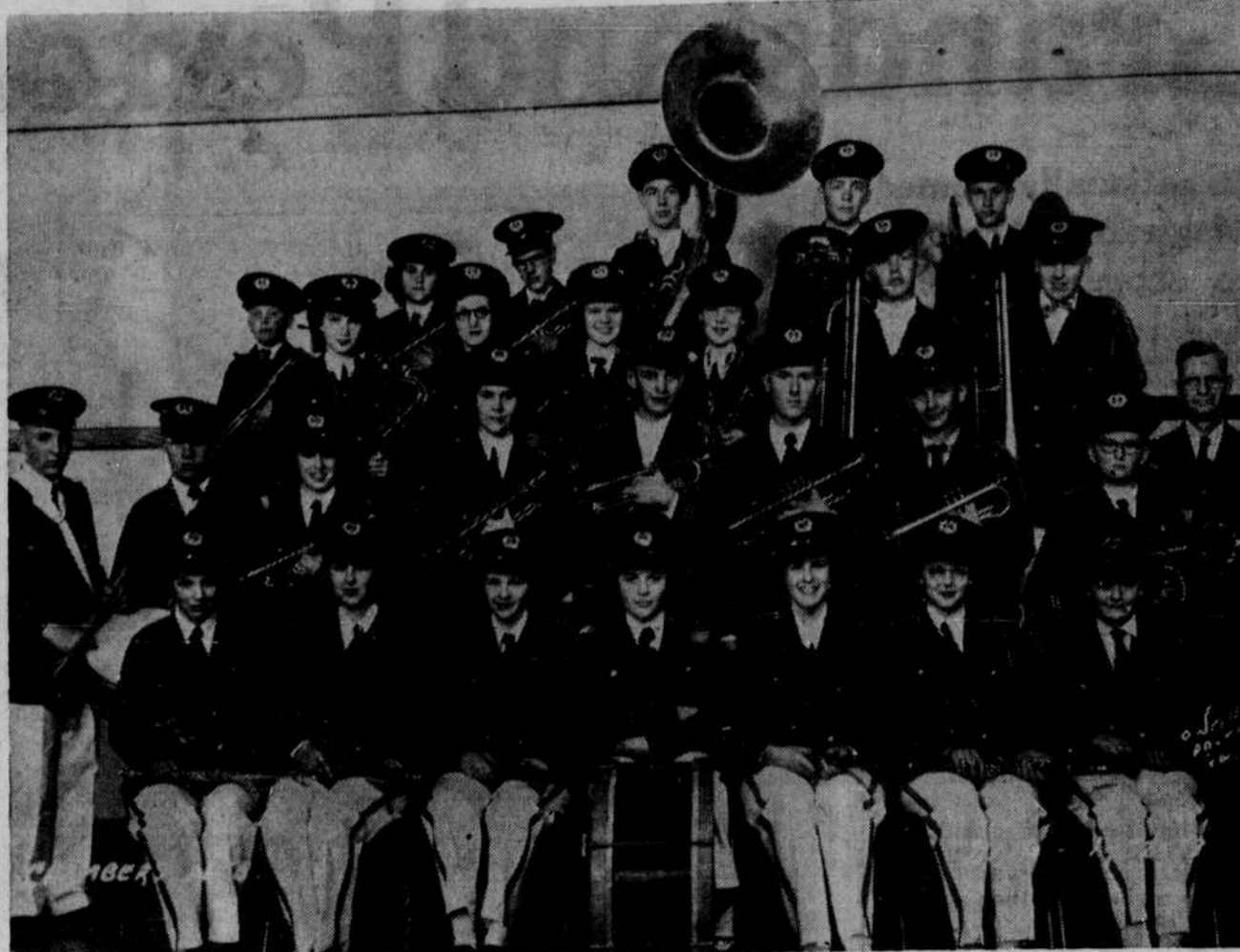
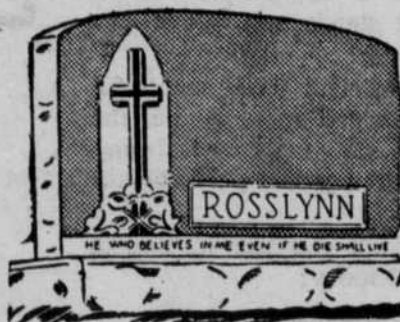
SALES . . . and . . . SERVICE

# PALMER

**Monument Company**  
BROKEN BOW  
★ ★ ★

**Monuments - Markers - Mausoleums**

When in need of a monument or marker  
write for our prices. Always  
remember: Pleasing you  
keeps us in business.



Chambers high school band . . . to play Thursday, September 3.—O'Neill Photo Co.

## Tuesday Entry Day; Wednesday, Judging

As is customary, the opening day of the fair will be devoted to entering exhibits. Details concerning time of entry in the various divisions are to be found in the premium list in these pages. Entry day will be Tuesday, September 1.

The second day of the fair — Wednesday, September 2 — will be judging day. And keen competition there'll be!

Thursday and Friday, September 3 and 4, are entertainment days and set aside for the public


**STATE FAIR**

 Education!  
Entertainment!  
Excitement!

 Surfaced Parking Lots  
Picnic and Camp Grounds

Nebraska's Biggest Event!

**SEPT. 6 thru 11**
**LINCOLN**

## THE FRONTIER

North-Central Nebraska's BIG Newspaper

**Congratulations to the Fair!**

## Holt Soil Conservation DISTRICT

. . . CHAMPIONS OF . . .

- Conservation
- Development
- Self Government

. . . OFFERS YOU . . .

- Technical Assistance
- Soil Surveys
- Overall Farm & Ranch Planning

. . . PLUS . . .

- Trees and Planting Facilities
- Grass Seed Harvesting & Cleaning Equipment
- High Quality Grass & Legume Seed

Your Cooperation Appreciated

COURTHOUSE ANNEX BUILDING

Phone 23—O'Neill

Office Day—Thursdays