

16 Second-Class Awards Are Given

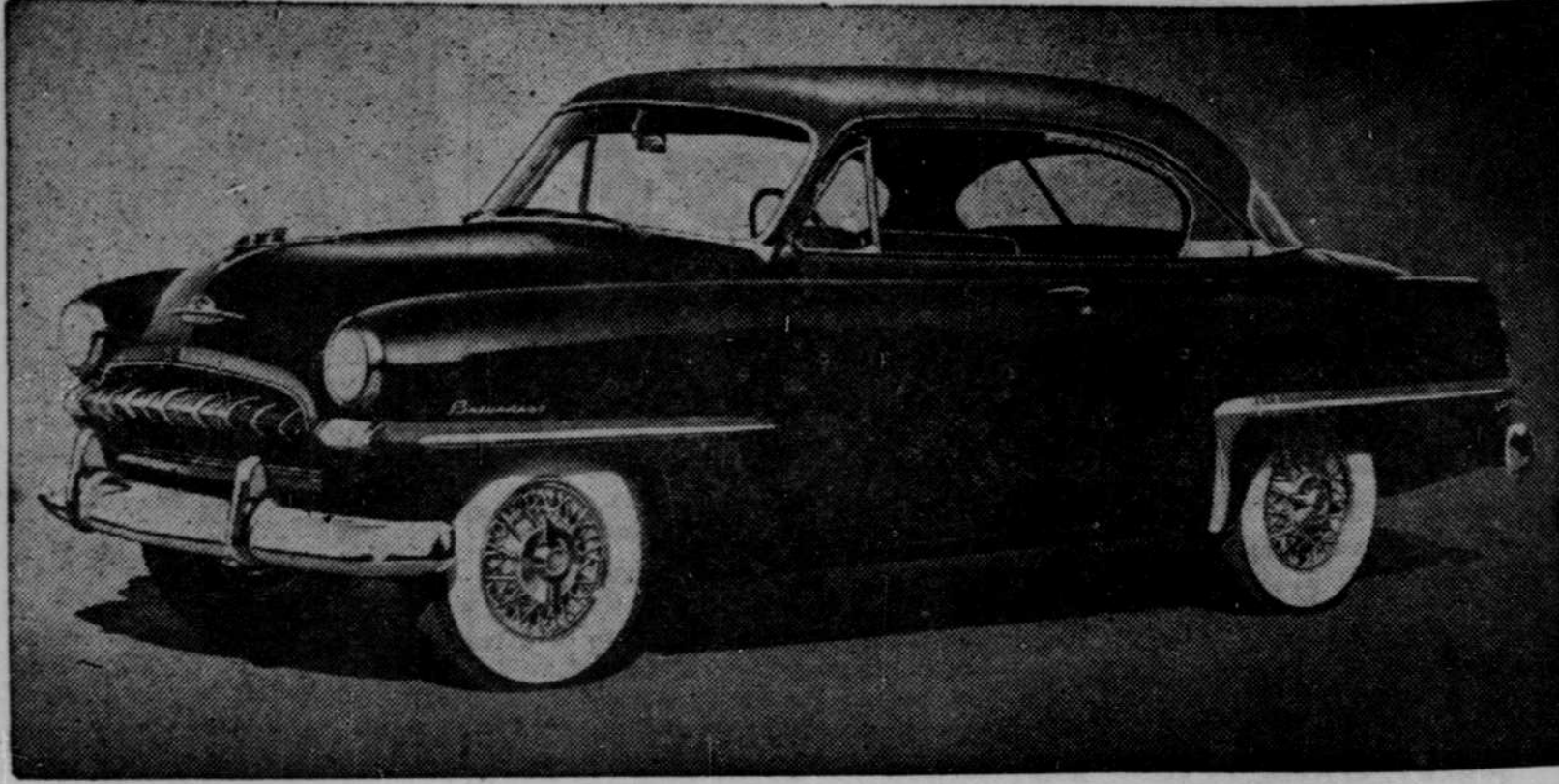
Court - of - Honor Is Held at Ewing

EWING—A court-of-honor was held for Boy Scout troop 181 of Ewing last Thursday evening at the Legion club. Over 75 interested parents and friends were in attendance.

The program opened with the presentation of colors by Scouts Allen and Elwood Peterson by the color guards, Robert Tuttle and Paul Gunter, followed by the pledge of allegiance to the American flag, by scouts and audience, led by Milan Welke.

Chairman Gail Boies opened the court-of-honor followed by introduction of Boy Scouts by Allen Peterson while Milan Welke lighted a candle to represent each.

Second class awards were presented by Committeeman John Walker to 16 members of the troop: Allen Peterson, Elwood Peterson, Paul Gunter, Ronald Hahlbeck, Larry Rotherham, Delbert Carl, Milton Biddiscombe, Bob Tuttle, Jerry Hahlbeck, Ronald Clloyd, Bob Welke, Milan



Plymouth Features a New Design

A new concept of automobile design in the low-priced field coordinates superb styling with advanced engineering developments in Plymouth's line of 1953 models, according to Paul Shierk, manager of the Smith Motor Co. The Smith firm has entered both DeSoto and Plymouth in the O'Neill auto show. The dashing Belvedere hardtop (above) has interior tailoring and appointments that blend harmoniously with its two-tone exterior colors. Even the steering wheel is color coordinated. Powered by the live-ly and dependable Plymouth engine with its increased rating of 100-horsepower and 7.1-1 compression ratio, the Belvedere is one of nine body styles offered in the 1953 line. Wire wheels shown are optional at extra cost.

Welke, Grover Shaw, Neal Jensen, Leo Ruther and Gene Sisson. Tenderfoot awards were given Bobbie Tams and Larry Larson. Awards for perfect attendance for one year were presented Allen Peterson, Elwood Peterson and Bob Tuttle.

In the class for advancement were Jim Good, who was made junior assistant scoutmaster; Allen Peterson, senior patrol leader; Milan Welke, patrol leader, and Lyle Spence, assistant patrol leader.

On completion of awards, scoutcraft demonstration in first aid were given by Bobbie Tams, Milan Welke, Jim Good and Neal Jensen.

Short talks were given on scouting by Lyle Dierks, neighbor commissioner, and by Don Lyons of O'Neill, district commissioner. The court-of-honor, the first for troop 181, came to a close with the retiring of colors and taps played by Paul Gunter.

Refreshments were furnished by the Ewing Commercial club, sponsors of the Boy Scouts and served by Mrs. Robley Sisson, sr., Mrs. C. C. Hahlbeck, Mrs. R. H. Shain, Mrs. John Walker, Mrs. Leland Welke and Mrs. Gail Boies.

Nine Cub scouts met at the home of Mrs. Robert Tams on Tuesday evening, January 13, and they met again Friday, January 23, at the home of Mrs. Clarence Hahlbeck. Nine members and one guest, Donald Rotherham were present at Hahlbeck's. Roll call was answered by stating a fact known about President Dwight Eisenhower.

During the recreation period, Valentine gifts were made for their parents. Mrs. Hahlbeck served refreshments.

Other Ewing News
The Happy Hollow 4-H club held its first meeting on Friday, January 23, at the home of Mr. and Mrs. George Ruroede. Fif-

teen members answered roll call. Milan Welke conducted the business session. Projects were discussed for the coming year. Members also enrolled in their choice projects for the year's club work. A social hour and refreshments were enjoyed.

Dr. Elton Welke of San Francisco, Calif., the son of Mrs. Harriet Welke of Ewing, has been called back for service in the navy and is now stationed at the Naval hospital, Oceanside, Calif. Doctor Welke served in the South Pacific during World War II, on the cruiser Atlanta. He was discharged 6 years ago. When called back for service, he held the position of administration head of an orthopedic clinic at Oakland. In 1952, the 11-year-old son, Elton, jr., of Mr. and Mrs. Welke, was stricken with a severe case of polio. At present he shows some "improvement."

Pvt. Louis Vandernick of Camp Chaffee, Ark., is spending a 10-day furlough with his parents, Mr. and Mrs. Leo Vandernick. Private Vandernick has just completed a course in a school of leadership.

Mr. and Mrs. Roy Rotherham were hosts to a 6 o'clock dinner party at their home on Monday evening, January 19, honoring Don Ruroede. Twenty of his friends were invited as guests. After an informal hour following the dinner, the group went to O'Neill where the evening was spent playing ping pong. Donald is the son of Mr. and Mrs. Art Ruroede. He has enlisted in the armed forces and left with Jack Pruden, Glen Tuttle and Fred Bollwitt, who have been inducted in the army.

Jack Pruden and Glen Tuttle were each presented a New Testament by Supt. Dewitt Hoke Sunday following the lesson period of the Sunday-school hour at the Ewing Methodist church. Both boys have been lifelong members. For the past three years, Jack has acted as Sunday-school secretary. In appreciation of his service, the teachers of the Sunday-school presented him a leather service kit. On entering high school, Jack and Glen became members of the teenage Sunday-school class in charge of Mrs. Harold Harris. After graduation, Jack continued a member. Glen went to Iowa to work, but continued to attend church services. Last summer he returned to Ewing and again joined the Live Wire teenagers. Mrs. Harris presented each a gift. Jack is the son of Mr. and Mrs. J. L. Pruden and Glen is the oldest son of Mr. and Mrs. Roy Tuttle. On January 20, both boys accompanied by Fred Bollwitt, went to O'Neill where they were inducted into service in the armed forces.

George Burk left Wednesday, January 21, for a vacation in the South. He accompanied his sister and brother-in-law, Mr. and Mrs. William Schindler, of Omaha.

Max Angus returned to Hastings Saturday after spending a few days with his parents, Mr. and Mrs. Loyd Angus.

Mrs. Fred Colfaek had as her guests Saturday Mr. and Mrs. Wade Davis and family of Chambers.

Wayne County Pioneer Dies

A Wayne county pioneer, Charles Gildersleeve, 91, died in his home at Wayne Monday, January 19.

Survivors include: One daughter, Miss Helen Gildersleeve, of Wayne, and one son, Glen, of Richmond, Va.

He was the great-uncle of Dr. and Mrs. H. D. Gildersleeve of O'Neill, who attended the funeral services on Thursday, January 22.

MACHINE HITS SNOWBANK

EWING—Mr. and Mrs. Robert Kneitzger and son, Bob, accompanied by Joe John and Jerome Thoenel, had an accident Monday morning when their pickup truck hit a snow bank causing the driver to lose control, while enroute to Ewing. The car is reported to be damaged but none of the occupants received serious injuries.

Mrs. D. H. Clauson has returned from a 10-day business trip.

Dr. Fisher, Dentist

In the Bishop Block—Norfolk
Office Phone: 610
Res. Phone: 2842

DRS. BROWN & FRENCH

Eyes Tested—Glasses Fitted
Broken Lens Replaced in 24 Hours
Other Repairs While You Wait
Complete X-Ray

Low Hood Silhouettes in Chrysler Lines

Can maximum safety and beauty be combined in good automobile design? Chrysler corporation engineers combined them with the result that Chrysler corporation car owners enjoy as much as 37 percent seeable distance directly in front of the hood than is offered in the high, massive front end design favored by some stylists recently.

Following a styling innovation begun several years ago, Chrysler corporation designers have, in the interests of the driver's forward vision, designed their Plymouth, Dodge, DeSoto and Chrysler cars with low hood silhouettes which slope down from the windshield.

This type of design incorporates more compact engines with re-designed air cleaners, new radiator shells and, in some cases, new front chassis sections to accommodate lowering the engine.

Over the center of the hood in one of the Chrysler corporation cars tested, the minimum sight distance is 31 feet forward of the driver, while in the competing make, the minimum sight distance is 42½ feet, a difference of 11½ feet. Over the lowest point of the hood, the Chrysler corporation car driver can see objects as close as 14 feet from his position at the steering wheel.

These points were determined by a line from the center of the average driver's eye, tangent to the highest and lowest point of the front end sheet metal and intersecting the ground.

In every one of the direct comparisons made between a Chrysler corporation car and its competing make, a closer view of the road was obtained over the low hood silhouette of the Chrysler-built car, adding greatly to security and driving explained Paul Shierk, manager of the Smith Motor Co., of O'Neill, and C. M. Wilson of Butte, Chrysler dealer there.

Chrysler corporation cars are represented in the 1953 O'Neill show by Mr. Wilson, exhibiting Chrysler, and by the Smith Motor Co., showing both DeSoto and Plymouth.

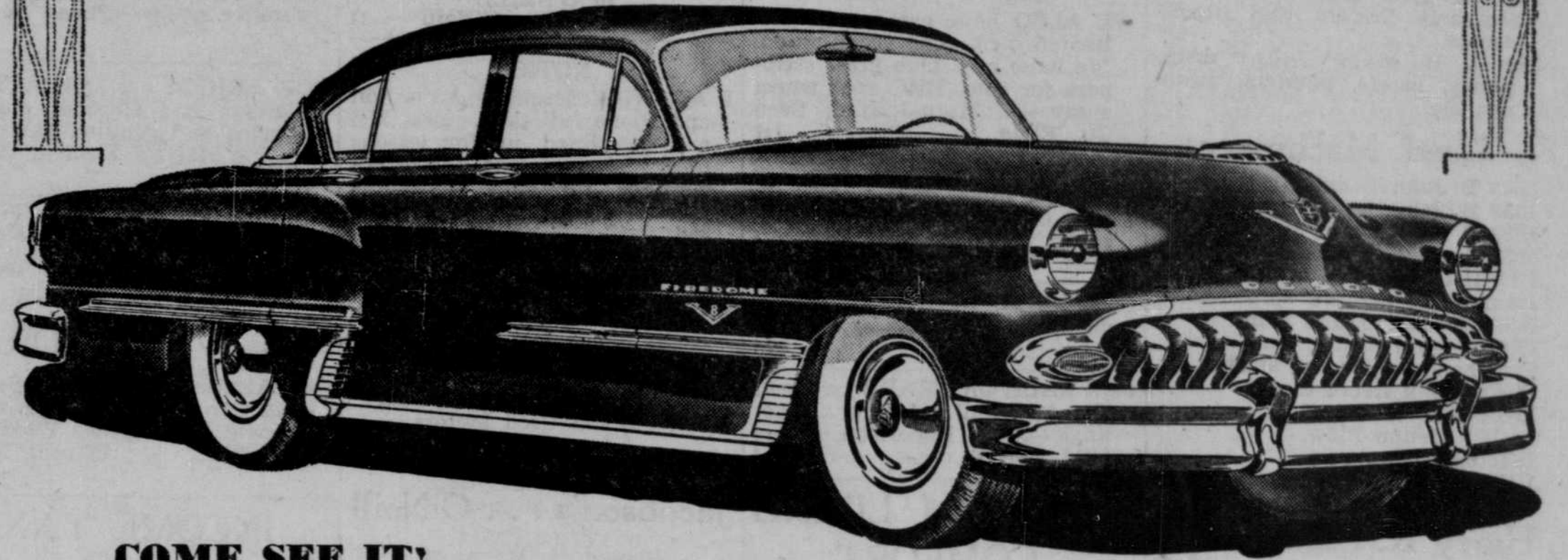
SMITH MOTOR CO., O'NEILL

PAUL SHIERK, Mgr.

presents

The Distinguished 1953 DeSoto

Beautiful New Looks! Beautiful New Interiors!
It's The Most Beautiful New DeSoto Ever Introduced!



COME SEE IT!

BRAND NEW STYLING! Lower and longer . . . glamorous new chrome fender moldings . . . new, wider, lovelier front grille . . . beautiful new swept-back rear fenders . . . new, lower, wider rear deck!



BRAND NEW INTERIORS! New, handsome upholstery . . . distinctive new door panels . . . new, lovely grained instrument panel . . . all harmonizing with body colors.

GREAT POWER FEATURES! The DeSoto 160 h.p. Fire Dome V-8 has America's most powerful engine design. Power Steering makes parking and turning easy as dialing a phone. Power Braking assures faster, easier, safer stops.

SEE 160 H. P. FIRE DOME V-8 and POWERMASTER SIX!

SMITH MOTOR CO.

See and Drive the New DE SOTOS and PLYMOUTHS
at the O'NEILL AUTO SHOW!

Announcing...



CHRYSLER'S NEW YORKER DE LUXE

Club Coupe

A great many of you have been waiting for this . . . a swank, sporty Two-Door Club Coupe with the special flair of the Chrysler New Yorker line.

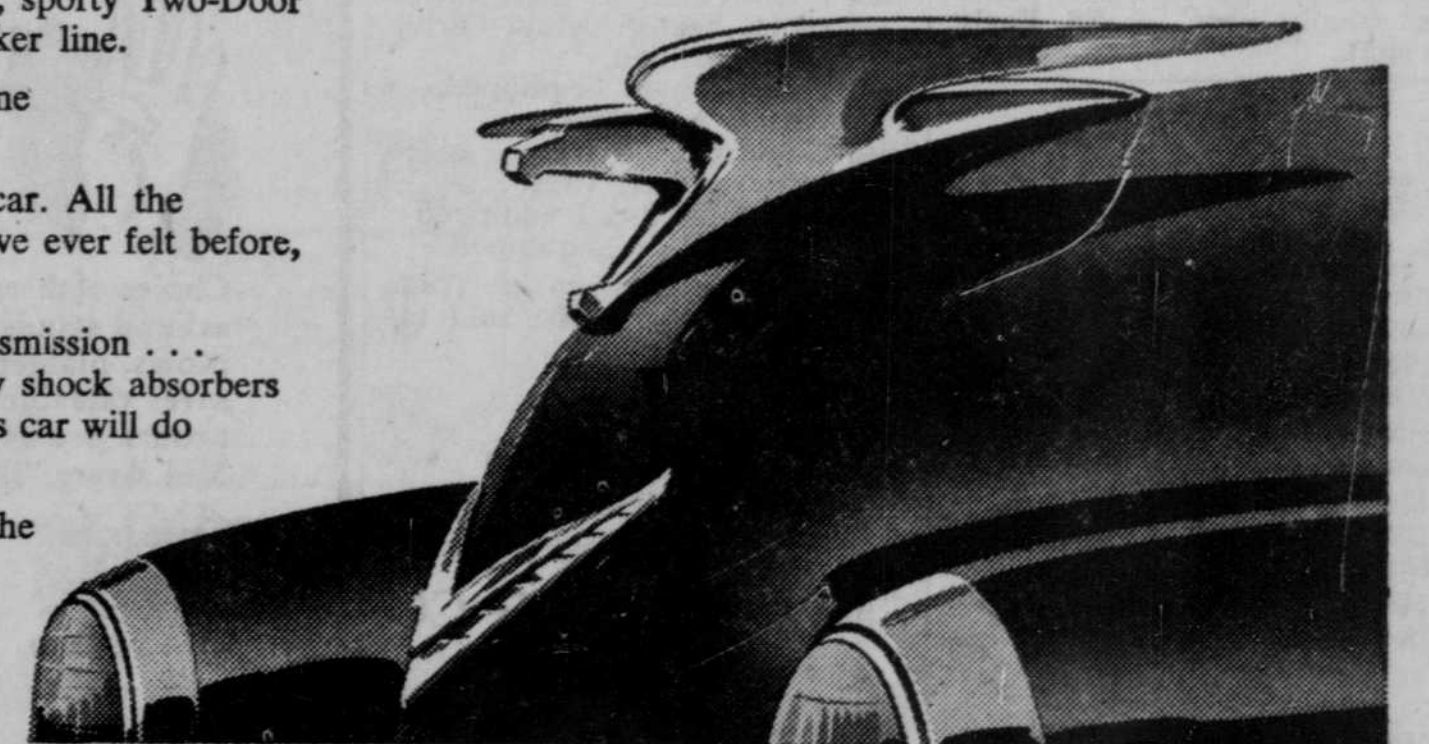
You'll like its looks. It's a true Chrysler and acts like one . . . safe, solid, comfortable.

It's powered by the only new-type engine in any American car. All the power you can use. More real control and security than you've ever felt before, uptown, downtown, and out-of-town.

Power Steering . . . Power Brakes . . . Fluid-Matic Transmission . . . they're here, too. And so are those double-strength Oriflow shock absorbers that make a road feel as smooth as a dance floor. You know this car will do what you want it to . . . without coaxing.

Stop in soon at your Chrysler dealer's and discover what the world's finest engineering looks like and feels like . . . right in your hands!

ONE OF AMERICA'S FIRST FAMILY OF FINE CARS



C. M. WILSON . . . Butte

We extend a cordial invitation to you to inspect first-hand our truly fine car — CHRYSLER — at the Auto Show!

The Sandhills Foremost

CATTLE AUCTION SALE EVERY TUESDAY

HOG AUCTION:

Starting at 11 O'Clock A.M.

CATTLE AUCTION:

Starting at 1 O'Clock P.M.

Under the same management for over 20 years. Bonded — Insured — Reliable

For Highest Net Results — Sell Them at Atkinson
Phone 5141

Atkinson Livestock Market

Atkinson, Nebr.

Ernie Weller

General Manager

POLIO BENEFIT DANCE

AT O'NEILL

American Legion Auditorium

Saturday, January 31

KLIFF RIGGS' ORCHESTRA

Adm.: Adults \$1, Students 50c

All Proceeds Will Go to Polio Fund

Raise Chicks Cheaply

JAMESWAY GAS BROODERS

will cut your brooding cost in half. Dozens of our customers report such a low cost that it's hard to believe.

Jamesway Gas Brooders last for years and years. They are very dependable and give you healthy, cool room brooding at the lowest cost.

In two sizes at —

LEIDY'S in O'Neill