

# Cards Toss Scare into OHS Blues

Eagles Win, 35 - 29; Atkinson, Chambers Are Other Victors

Tuesday Night . . .

Favorites survived Tuesday night's play in the 16th annual Holt county high school basketball tournament.

The Atkinson Balers eliminated the Inman Tigers with ease, 63-29; the Chambers Coyotes ousted the Ewing Tigers, 43-24, and the O'Neill Eagles squeezed past their arch intracity foe, the St. Mary's Cardinals, 35-29.

Atkinson 53; Inman 27  
Center Kissinger and Forward Withers were the big guns in the Balers' onslaught against the outclassed Inman Tigers. Kissinger connected for 19 points; Withers, 11.

The Balers built an 8-6 first quarter lead, moved ahead 23-15 at halftime, and soared to a 30-19 advantage at the end of the third. The Atkinson crew broke the Tigers' back in the fourth, swishing in 23 points.

Best Inman performer was Don Kelly with 12 points. He exhibited the only offensive spark for the losers.

Boxscore:

ATK. (53)	fg	ft	pf	pts
Frickel, f	10	2	2	22
Withers, f	5	1	1	11
Karr, f	2	1	1	5
Huston, f	2	0	1	4
Kissinger, c	6	7	0	19
Spence, c	0	0	0	0
Puckett, g	1	2	0	4
Dierks, g	1	0	2	2
Ratliff, g	0	1	2	1
Dunn, g	2	1	0	5
Totals	20	13	9	53

INMAN (27)

fg	ft	pf	pts	
Reimers, f	3	0	2	6
D. David, f	0	0	0	0
L. David, f	0	0	0	0
Wolfe, f	0	0	0	0
Kelly, c	4	4	4	12
Butterfield, c	0	0	0	0
Couch, g	1	1	3	3
Bohn, g	0	0	0	0
Davis, g	1	0	3	2
Jackson, g	0	0	0	0
Totals	11	5	17	27

Chambers 43; Ewing 24  
The Ewing Tigers were utterly unable to make a match for the Chambers Coyotes, one of the seeded teams in the '53 tourney. The Coyotes exhibited more class in every department.

Bernie Gribble paced the victors with three fielders and 10 freethrows, totaling 16 points. Forward D. Carl was best for the losers with eight.

Chambers jumped to a 9-3 lead in the first stanza, went ahead 23-6 at halftime and it was obvious it was virtually no contest. Coach Eckdahl substituted liberally during the last half.

Boxscore:

CHAM. (43)	fg	ft	pf	pts
D. Atkinson, f	1	1	3	3
Gribble, f	3	10	2	16
Rowse, f	3	2	2	8
Tangeman, f	0	1	0	1
Strong, c	3	0	2	6
Farrier, c	0	0	3	0
Adams, g	0	5	3	5
Meas, g	1	0	2	2
M. Atkinson, g	0	2	0	2
Beed, g	0	0	0	0
Totals	11	21	17	43

EWING (24)

fg	ft	pf	pts
Carl, f	3	2	8
Gibson, f	0	2	2
Williamson, f	1	1	5
Libby, f	0	0	0
Pruden, c	1	0	5
Rotherham, c	1	1	3
Christon, g	0	0	4
Welke, g	0	0	0
Theoddel, g	1	4	6
Spence, g	0	0	0
Totals	7	10	23

O'Neill 35; St. Mary's 29  
Coach Paul Baker's O'Neill high Eagles owned only a 2-point lead with one minute 15 seconds remaining in Tuesday's nightcap. Until that point it had been a wild ball game with the St. Mary's Cardinals controlling the ball most of the time and deliberately upsetting the highly-favored Blues mentally.

Cardinal guards toyed with the ball for several minutes at a time, obviously anxious to work it in and risk losing it.

Prof. Joe George's strategy paid off and tossed a scare, first-class, into the Blues, who were frustrated and never got into high gear—unless it might be said they were their natural selves during the final 75 seconds when they picked up five vital points.

Bob Carroll and Don Hollenbeck looked best for the victors and the high-scoring Gary Buckmaster fizzled at the post, getting only two fielders. Davey Eby, normally a nifty floor man, was bewildered on the rebounding in which he usually excels.

Terry Wanser, the corner artist, collected seven points for St. Mary's and three others hit six each.

The nightcap pleased the crowd, which had sat through two listless earlier games. Some of the partisans were clamoring for action, however, and disapproved of the stall game.

It was a moral victory for the Cards, but the Eagles, who hold a 45-22 decision over the Scarlet in regular season play, earned a ticket to the semis by ousting their arch intracity foe.

Boxscore:

O'NEILL (35)	fg	ft	pf	pts
Hollenbeck, f	2	5	1	9
Dexter, f	0	0	0	0
Chace, f	2	2	3	6
Seger, f	0	0	0	0
Buckmaster, c	2	2	2	6
Miner, c	0	0	0	0
Eby, g	0	3	2	3
Booth, g	0	0	1	0
Carroll, g	3	4	0	10
Kileoin, g	0	1	0	1
Totals	9	17	9	35

SMA (29)

fg	ft	pf	pts	
Graham, f	1	0	0	2
T. Wanser, f	3	1	7	7
Berlin, f	0	2	1	2
Cuddy, f	0	0	0	0
J. Wanser, c	2	2	5	6
Weier, c	2	2	3	6
W. Donohoe, g	3	0	3	6
Tomlinson, g	0	0	0	0
London, g	0	0	0	0
R. Donohoe, g	0	0	0	0
Totals	11	7	18	29

Wednesday Night . . .

St. Joe 66; Atkinson 39  
The St. Joe Bluejays walloped the Atkinson Balers Wednesday night on the second night of the annual Holt prep basketball tourney.

The Josies trailed, 9-11, at the end of the first quarter. At halftime the score was 26-19 in favor of the Josies. By the end of the third the Balers were trailing, 30-37.

There were so many double fouls the timekeepers arranged for a four and 32 minutes of basketball for a 32-minute regulation game. Sixty fouls were called.

The Josies started slow and breezed ahead after the second period got underway.

Page 64; Stuart 32  
It was Page all the way with Park, Leist and Heiss collaborating for 47 of the Eagles' points as the Stuart Broncos were completely outclassed.

Hytek, Bronc center, collected nine points to lead the losers. Page built 23 points during the first period compared to 5 for Stuart. Page led, 39-14, at halftime.

Tonight's Games . . .

In the semifinal play tonight, St. Joe will go against Page at 7 o'clock and Chambers will be pitted against O'Neill high. The second game is scheduled to get underway at 8:30.

BOWLING NEWS

Many bowlers wanted the official standings of the teams at the end of the half. They are as follows:

W	L
Phillips 66	16
M&M Cafe	16
Knight Bowling Alley	15
Coast to Coast	15
New Outlaw	14
Gambles	13
Wm. Krotter Co.	11
McIntosh Jewelry	11

At the starting of the second half, Shelhamer's organized and replaced the Coast to Coast team. In order to keep the Coast to Coast team in the league, it combined with the Knight Bowling Alley team and the combination of the two teams will be called the Coast to Coast team.

(Week of January 12-15)

W	L
Coast to Coast	10
Phillips 66	10
Wm. Krotter Co.	11
New Outlaw	9
Gambles	9
M&M Cafe	7
McIntosh Jewelry	3
Shelhamer's	2

Harold Calkins and Lyle Green tied for the high single game. Each rolled a score of 201. Harold Calkins took the high single series with 545. Phillips 66 captured the high team game with 805 and the high team series with 2278.

Tonight's bowling (Thursday) has been cancelled on account of the basketball tournament. Bowling will resume on Monday January 26.

Favorite Sports

Used in Roll Call—  
The Eager Beavers held a meeting at school district 159, January 9.

The meeting was called to order by the president, Edward Mullen. Roll call was answered by 10 members stating their favorite sports. There were a few book reports as follows:

Marty Mullen: Hopalong Cassidy and The Little Cowboys.  
Ellen Havranek: Silver Wings for Vicki.  
Dolores Tunender: Dutch Twins.  
Eddie Mullen: Hi Cowboys.  
On motion the meeting was adjourned.—By Dolores Tunender, news reporter.

# C&NW Pays \$22,709 in Holt Taxes

A total of more than \$346,000 is being paid by the Chicago and North Western railway company as 1952 taxes on its operating property in 23 counties in Nebraska, according to Paul E. Feucht, president of the railway company. Almost half of this amount constitutes school taxes.

Holt county's share, second highest in the list of counties, will be \$22,709.08. Of this amount \$12,281.20 will go to school districts; \$1,320.02 to townships; \$1,391.04 to cities and villages; \$2,124.44 to the county; \$5,056.78 to the state; \$35.50 to airports.

Feucht said that the actual amount of the taxes was \$346,755.35 as compared with \$333,172.25 for 1951, an increase of 4.08 percent over 1951 taxes, adjusted to include taxes returned because of a blanket school tax refund during the past year. Taxes for the state in 1952 increased by 10.46 percent; school district taxes by 2.81 percent; township taxes by 10.17 percent; and city and village taxes by 1.79 percent.

County taxes decreased by 2.08 percent and airport taxes by 15.31 percent.

In general, the 1952 taxes represent an increase of more than 46.72 percent over taxes paid by the railroad in 1946.

The 1952 tax was distributed as follows: school taxes, \$158,758.60; state taxes, \$83,838.43; city or village taxes, \$44,387.47; county taxes, \$43,375.21; township sanitary, road, cemetery, and fire protection district taxes, \$16,092.93; and airport taxes, \$302.71.

Feucht pointed out that approximately half of the total '52 taxes paid by the North Western in the state of Nebraska goes to the various school districts through which the railroad operates.

Figures compiled by F. J. Klein, land and tax commissioner of the railway company, shows tax totals by counties to be as follows:

Antelope, \$19,011.66;	Boone, \$9,685.22;	Boyd, \$13,784.50;
Brown, \$10,427.32;	Butler, \$9,279.06;	Cherry, \$35,077.76;
Colfax, \$7,454.69;	Cuming, \$9,347.92;	Dawes, \$19,372.93;
Dodge, \$18,800.04;	Douglas, \$9,680.66;	City of Omaha, \$11,943.84;
Fillmore, \$10,406.36;	Holt, \$22,709.08;	Knox, \$16,889.94;
Lancaster, \$4,561.11;	City of Lincoln, \$1,696.42;	Madison, \$13,925.60;
Nuckolls, \$8,322.78;	Pierce, \$8,882.12;	Platte, \$7,324.74;
Rock, \$7,300.89;	Saunders, \$14,600.36;	Seward, \$11,034.34;
Sheridan, \$15,655.83;	Sioux, \$9,178.06;	Stanton, \$7,314.85;
Thayer, \$1,428.72;	Washington, \$11,366.46;	York, \$92.00.

GETS TRAINING

Holt County Agent A. Neil Dawes is among 25 extension agents in the state taking advanced training at the University of Nebraska college of agriculture, Lincoln, this month.

Phone your news to 51!

# Johnson Recalls Gibson's Death

Blizzards Hurt Cattle Raisers—

Last week's blizzard and sudden drop in temperatures hurt Nebraska cattle raisers, according to a report Tuesday by the state-federal agricultural statistics office.

Since range and pasture land had been closed down for some time because of the snow cover, and because of large shipments of hay out of the state, there was some apprehension if the feed supply would be adequate. However, grain feed supply was reported as ample to surplus throughout the state.

The snow was ideal for winter wheat, though, and prospects there are reported considerably improved since the dry spell last fall.

Statistician A. E. Anderson reported seed potato production for the state at 888,000 bushels, slightly above last year and also more than the 1941 - 1950 ten-year average.

Farm machinery prices were reported down slightly and land prices continue high. Anderson reported that 160 acres of land in Scotts Bluff county that could be bought for \$17,000 in 1941 is now priced at \$50,000.

STUART NEWS

Mr. and Mrs. Berlin Mitchell attended funeral rites in Atkinson Friday, January 16, for Joan Evalene Garwood, infant daughter of Mr. and Mrs. Evan Garwood.

Miss Joan Burhans has accepted a civil service position in Washington, D. C., and will leave for that city Friday, January 23.

Mrs. Frances Roberts of Valentine visited here with friends on Sunday and Monday, January 18 and 19.

Word has been received by Mrs. Lloyd Thurlow that her brother, Florian Gestrich, of Los Angeles, Calif., is engaged to Miss Jean Crowell of Los Angeles.

Mrs. Hattie K. Fox and Bob Gilg of Newport, Mrs. Wilfred Seger and Lowell spent Sunday afternoon at the Leonard Bazelman home in O'Neill.

Mrs. Violet Glig of Bassett spent Friday evening, January 16, at the W. L. Seger home.

Mr. and Mrs. Rosco Sill, Mr. and Mrs. Oliver Gilg and Mrs. Hattie Fox of Newport visited at the W. L. Seger home Saturday evening, January 17.

Mr. and Mrs. Charlie Mitchell of Atkinson visited at the Berlin Mitchell home Wednesday, January 14.

ACCOUNT BOOKS

Additional help to farmers and homemakers can be received from the county agent's office, which now has the farm and home account books. These will be considerable help to farmers and homemakers. A new bulletin, "Farmer's 1952 Income Tax," is also available at the county agent's office. It is free.

(Editor's note: The Frontier is grateful to Clarence H. Johnson of Chambers, a longtime subscriber to this newspaper, for a brief story about the famous blizzard of January 12, 1888—the 65th anniversary of which was commemorated last week. Mr. Johnson has been a Holt resident since 1883. His father, J. P. Johnson, was a homesteader.)

By CLARENCE H. JOHNSON  
John Schneider was teacher in school district 121, located 1 1/2 miles north of the Holt-Wheeler county line.

When the big storm of January 12, 1888 struck, Mr. Schneider dismissed the pupils.

Mr. Schneider and George and Fred Herzog started to go home. The storm became so severe that their direction was shifted to the southeast and they wound up at the Smith home. The Smiths were a negro family. They had refuge there until the next morning.

The storm was so severe that none of the group would risk going out to the haystack. (Pioneers burned hay in those days.) The occupants of the little house and their guests proceeded to tear up the wood floor of the sodhouse and use it for fuel.

Homer Gibson and his step-sister started out horseback, two riding the same horse. They became stranded in a snowbank on what was then called the Cline place, located 2 miles east and three-fourths of a mile north from the school.

This is the place now occupied by Philip and Edwin Hoerle.

They bedded down for the night with the saddle blanket, but Homer Gibson froze to death. The girl was still alive the next morning.

Mr. Cline saw them, quickly went and got the girl, and being somewhat skilled in family doctoring he placed her in a tub of snow in a cold room and managed to draw the frost out of her body.

The man who died was an uncle of Lloyd and James Gibson.

Lots of livestock was lost in the big storm. It was such a nice morning that farmers had turned out their stock—not knowing what disaster lay ahead.

It was a horrible day and not many persons remember it. It still rates with me as the all-time worst storm in history.

FLU EPIDEMIC

A wave of influenza has struck Holt county. Hundreds of families reported one or more sick persons during the past fortnight. Only fatality reported in the region blamed on virus infection was that of Mrs. Everett Denny, 44, Neligh housewife. Her husband and two daughters are hospitalized with the same disease.

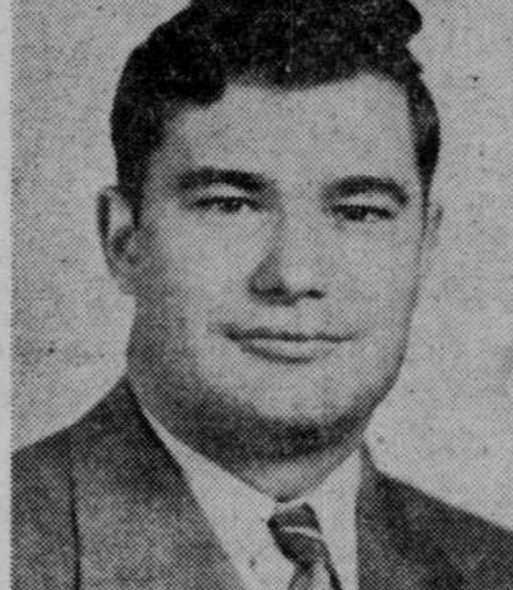
Remember the big auto show next Thursday and Friday . . . Legion auditorium.



Becker . . . health.



Derrick . . . livestock.



Ringler . . . soil

\*\*\*

Coming to Stuart

Ringler . . . soils.

Three of the 10 extension specialists who will be with the Cornhusker caravan of '53 when it visits Stuart Wednesday, February 11, are: Helen Becker, health specialist; W. W. ("Bill") Derrick, animal husbandman, and Wilber Ringler, soils specialist.—U of N Photo.

LIONS WIN

The Lions basketball team defeated the Chambers towners, 72-68, Sunday in a game played at Chambers.

# Eagles Point to North-Central Meet

The O'Neill high Eagles along with eight other teams in the North-Central Nebraska basketball conference will participate in the annual loop tourney at Bassett February 2, 3, 5 and 6.

In first round games, Long Pine will play Stuart, Wood Lake will face Bassett, Springfield will tackle Valentine and Atkinson will go against O'Neill. Ainsworth will challenge the victor of the Stuart-Long Pine fray. The winner of that match, probably will play the victor of the Bassett-Wood Lake game. This is expected to be Bassett. Winners of the Atkinson-O'Neill and Springfield-Valentine games will clash.

ON COMMITTEE

At a meeting of the board of directors of the Nebraska Real Estate association, which was held on January 14 at Lincoln, Harold J. Grove of Omaha, president of the Nebraska Real Estate association, announced that Keith Ahart of O'Neill has been appointed to serve on the 1953 realtors Nebraska committee.

**BUY MORE SAVE MORE**

Prices Effective Thurs., Fri., Sat., Sun. Morning

SUNKIST—ORANGES	Doz. 19c
TANGERINES	Lb. 13c
CABBAGE	Lb. 6c

**GUARANTEED TO PLEASE YOU BETTER!**

Money Back Guarantee

Any coffee you buy is not better than Robin Coffee. If you are not satisfied, bring back the empty can and we will refund your money in full.

Meat Dept.	
U.S. GOOD BOILING BEEF	Lb. 39c
U.S. GOOD CHUCK ROASTS	Lb. 57c
U.S. GOOD ROUND STEAK	Per Lb. 79c
PORK ROASTS	Lb. 43c
SUNSHINE—CRACKERS	1-Lb. Box 23c
SUNKIST—LEMONS	2 Lbs. 29c
GERBER'S—BABY FOOD	6 Cans 49c
CAMPBELL'S TOMATO SOUP	2 Cans 23c
KRAFT'S DINNER	2 Pkgs. 29c
SUPER SUDS	Large Size Pkg. 27c

Plenty of Parking We Buy Eggs

## 4th Street Market

# It's Free! Plan Now to Attend

## THE FIRST ANNUAL 1953 O'Neill Auto Show

### Thursday and Friday January 29-30

#### American Legion Auditorium

(Please Use West Entrance)

##