

# Church

## Notices

### CHRIST LUTHERAN (O'Neill)

Rev. R. W. Olson, pastor  
Thursday, January 31: Ladies Aid society meets at the home of Mrs. Palmer Skulborstad, 2 p.m. Sunday-school teachers meet at the parsonage, 7:30 p.m.

Saturday, February 2: Confirmation instruction classes at the parsonage, 2:30 and 3:30 p.m.

Sunday, February 3: Sunday-school, 10 a.m. Divine worship with the celebration of holy communion, 11:15 a.m. Those desiring to partake of the sacrament may announce themselves either before the service or by calling the parsonage. Young people's Christian growth conference at Zion Lutheran church, Plainview, 3 p.m.

We bid everyone welcome in the name of Christ Jesus, the world's only Savior. If you have no church home we invite you to worship with us regularly.

METHODIST (O'Neill)  
Rev. V. R. Bell, pastor

Church school, 10 a.m., classes for all ages.

Worship service, 11 a.m., sermon, special music.

MYF high school group, 7:30 p.m.

The WSCS study group meets

Monday at 2:30 p.m. The monthly meeting of the official board will be Monday, February 4.

The junior choir and fellowship meets Wednesday at 7 p.m.

The senior choir will practice Thursday evening (tonight).

The Dorcas circle will meet Friday afternoon with Mrs. J. LaVerne Jay.

The young adults will meet on Tuesday evening, February 5.

A large crowd attended the congregational dinner and program after church Sunday. This is the second in a series of such dinners.

We invite you to worship with us.

COMMUNITY (Stuart)  
Rev. Orin Graff, pastor

Services, 10 a.m., every Sunday.

Sermon for Sunday, February 3: "Are Thy Sins Forgiven?" Luke 7.

The Women's society will meet this afternoon (Thursday) in the church basement, 2:30 o'clock.

Hostesses will be Mrs. Jane Cobb, Mrs. Joy Greenfield and Mrs. Vernon Heyne.

Story time this afternoon (Thursday), 4 o'clock.

Ambassadors meeting tonight (Thursday), 7 o'clock.

Choir rehearsal tonight (Thursday), 8:15 o'clock.

The board of trustees met on Thursday night, January 24, to discuss business and elect officers as follows: George Hitchcock, president; Wesley Cobb, vice-president; Art Kopp, secretary, and Wilbur Moon, treasurer.

### METHODIST (Inman)

Rev. C. C. Chappell, pastor

Wednesday evening, January 23, 6 representatives of the pastoral relations committee met with 6 members of the Ewing pastoral committee at Ewing. District Superintendent Rev. Jay LaVerne Jay was in charge. A parish cabinet was organized with representatives from both churches to correlate the pastoral work between the churches.

The pastor, Rev. Charles C. Chappell, will serve as chairman. The first meeting of the parish cabinet was held at the home of Mr. and Mrs. Lewis Kopecky, Jr., on Wednesday evening, January 30.

Missionary Sunday was observed in the Sunday-school by a special collection. The kindergarten class had made piggy banks in which they had deposited their offering.

Mr. and Mrs. Ray E. Sedivy and daughter, Marilyn, of Ewing, were guests at the morning worship service. Reverend Chappell delivered his sermon entitled, "On Roads of Travel As Viewed from My Rocking Chair."

The Methodist Youth Fellowship met at the church Sunday evening at 7 o'clock with 8 members present. The lesson "Youth Takes a Look at Recreation," was led by Linelle Tompkins with Mr. and Mrs. Harvey A. Tompkins serving as sponsors for the evening.

Thursday evening, January 24, Harvey A. Tompkins, associate district lay leader, went to Bassett to assist in chartering a Methodist men's chapter in that church.

### CHRIST LUTHERAN (Lynch)

Rev. R. W. Olson, vacancy pastor

Sunday, February 3: Sunday-school, 7 p.m.; divine worship, 8:30 p.m.

Friday, February 8: Bible study society meets at the church, 8 p.m.

Visitors are welcome to all services and activities of this congregation.

### METHODIST (Chambers)

Rev. L. R. Hansberry, pastor

Sunday-school, 10:30 a.m., Clair Grimes, superintendent.

Worship, 11:30 a.m.

### FIRST PRESBYTERIAN (O'Neill)

Rev. Samuel Lee, pastor

The worship service presented last Sunday by the young people was very well received. The theme, "My Covenant With God"—To Be an Acceptable Workman, formed the basis of the message by 4 members of the Westminster Fellowship. Bruce McElhaney acted as leader of the service. The responsive reading of scripture was led by the members of the fellowship, and Janice Landreth read the morning scripture from II Timothy 2:1-16.

Following the organ call to prayer, Mildred Crabb offered the prayer of thanksgiving and intercession. The Westminster Fellowship presented the anthem, "Prayer for Service," by Gaul.

In presenting the theme, Phyllis Harmon spoke emphasizing the fact that we must each be a workman "together with God." Diane McAdams spoke declaring that each must be a workman "approved of God." David Lee stressed the need of "rightly dividing the Word," and Margaret Redd gave emphasis to the fact that each must be "increasing his knowledge of God." Following the message, Velma Layh offered a prayer of guidance. The congregation joined in singing a hymn of service and the service closed with an organ interlude and the benediction. Mrs. John Harbottle acted as organist and supervised the music. Candelights were Sandra Jane Petersen and Alta Mae Lyons. Ushers were Wally Shelhamer and Eddie Price.

Carolyn Hiatt, Elizabeth Schaffer, Eddie Gatz and Bruce McElhaney with the fellowship advisors, Mr. and Mrs. Mrs. Weston Whitwer and the pastor, were responsible for planning the service.

The week from January 27-February 3 is being observed by many denominations as youth week emphasizing the "call" to young people all over the world. The theme of next Sunday's sermon will be "He Calleteth for Thee." Scripture, Mark 1:16-20; text, John 11:28.

Sunday-school, 9:45 a.m.

Worship service, 11 a.m.

Westminster Fellowship, Thursday, 6 p.m.

Spiritual life group, Monday, 3 p.m.

A special invitation is given to Mariners to attend Sunday-school next Sunday.

Come and share our worship.

"Every duty which we omit, obscures some truth which we should have known."

### WESLEYAN METHODIST (O'Neill)

Rev. Melvin Grosenbach, pastor

Friday, February 1, 8 p.m. Two films portraying the truth about liquor, "Liquid Lore" and "Public Enemy No. 1." These are 16-mm sound films and will strengthen anyone against the sway of liquor traffic. These films will be shown in the Atkinson Wesleyan Methodist church Thursday, 8 p.m. They will be shown in Ewing Methodist church Saturday, 8 p.m.

February 2, Prayer conference, services at 10:30 a.m. and 2 p.m. Basket dinner. Morning service will consist of the women's missionary bands giving something of missionary interest.

The "Mid-Century Crusade" featuring Billy Graham in the Portland, Ore., meeting will be shown in the following places in a 16-mm sound film:

February 5: Lynch Wesleyan Methodist church, 8 p.m.

February 6: Center Union, 8 p.m.

February 7: Ewing Presbyterian church 8 p.m.

February 8: In our church here in O'Neill, 8 p.m. and again at 9 p.m., if there are those who cannot get in for the first showing or come until later.

### ASSEMBLY OF GOD (O'Neill)

Rev. Wayne A. Hall, pastor

Sunday-school, 10 a.m. There is a class for every age.

Worship hour, 11 a.m. Let the word of God become the measure for our thoughts and deeds each day.

Evening service at 7:45 o'clock. If you want to be saved from sin or to receive healing for your body we urge you to attend this service.

Story hour for all boys and girls is on Tuesday right after school.

Young people's meeting Tuesday, February 5, 8 p.m.

Ladies' prayer time Wednesday, 2 p.m.

Bible study and prayer service, Wednesday, February 6, 8 p.m.

Make church attendance a family affair.

### METHODIST (Inman)

Rev. Charles C. Chappell, pastor

Church school, 10 a.m., Robert Tams, superintendent.

Worship, 11:15 a.m.

Methodist Youth Fellowship, Sunday evening, 7 o'clock, Mr. and Mrs. Raymond Taylor, sponsors.

Extension vocation clinic on the campus of Nebraska Wesleyan university, February 8-10.

Regular monthly meeting of the Young Adult Fellowship on February 7.

The Blue group will meet on February 12 at the home of Lew Kopecky.

### IMMANUEL LUTHERAN (Atkinson)

Rev. R. W. Olson, pastor

Sunday, February 3: Divine worship, 9:30 a.m. Sunday-school, 10:30 a.m. Young people's Christian growth conference at Zion Lutheran church, Plainview, 3:30 p.m.

Visitors are welcome to all services and activities of this congregation.

### CENTER UNION (O'Neill)

Rev. Melvin Grosenbach, pastor

February 3: Morning worship, 10 a.m.; Sunday-school, 11 a.m.; young people's service and Bible study, 7:30 p.m.

February 6, 8 p.m., the "Mid-Century Crusade" will be shown here.

We will be glad to have you join us in these services.

### O'NEILL LOCALS

Mrs. Lloyd Collins entertained the following group at a dinner on Monday evening: Mr. and Mrs. Gurney Neilson and son, of Her-

ley, S.D.; Mr. and Mrs. Lowell Culver and family, and Mr. and Mrs. Floyd Long.

Ladies' all-wool coats sizes 14, 40, 42, 24 1/2, 50, now 20% less at Hagensick Ladies' Wear.—39-40c

Mr. and Mrs. Floyd Long went to Spencer on Monday, January 28, where they attended the funeral rites of a friend, Alex Humes.

Mr. and Mrs. Walter McNichols expect to go to Omaha on Saturday on business. From there they will go to Des Moines, Ia., to visit relatives for a few days.

Mr. and Mrs. T. J. Donohoe, Catherine and Harry were Sunday guests of Mr. and Mrs. J. B. Donohoe.

Mr. and Mrs. Robert Cook visited on Monday evening, January 28, with Mr. and Mrs. J. B. Donohoe.

Mr. and Mrs. Donald Clyde and Mrs. Clyde's father, Henry Rohrer, who has been staying with them, went to Creighton Wednesday to attend the funeral rites of D. N. Hart, Mrs. Clyde's uncle.

## SIXTH ANNUAL SALE OF THE

## Holt County Aberdeen - Angus Breeders' Association

AT THE O'NEILL LIVESTOCK MARKET - O'NEILL, NEBRASKA

**TUESDAY, FEBRUARY 5TH**

Show at 9:30 A.M.

Sale Begins at 1:00 P.M.

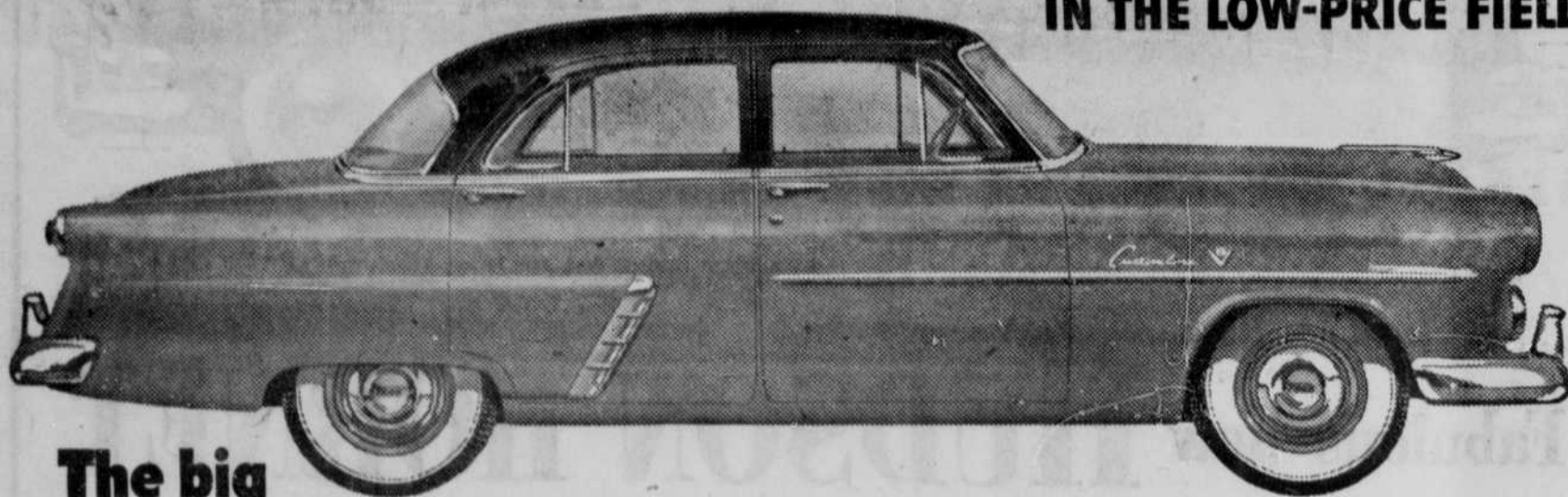
**72 HEAD -- 50 BULLS, 22 FEMALES**

For Sale Catalog or Tickets Write RAY SIDERS, O'NEILL, Sale Manager, or FREEMAN L. KNIGHT, O'NEILL, Secretary-Treasurer

**Banquet Monday Evening, February 4th**

# Here Friday!

## THE GREATEST CAR EVER BUILT IN THE LOW-PRICE FIELD



## The big 1952 FORD

### Out-rides them all!

The '52 Ford gives you riding comfort such as you have never before experienced in a car in the low-price field. With front springs tailored to the weight of each model, longer rear springs and diagonally mounted shock absorbers, Ford's Automatic Ride Control gives you the smoothest, easiest ride of them all—a level ride on straightaways, an even keel on curves.

### Out-sizes them all!

The '52 Ford has longer wheelbase, wider front tread and greater length. It's big outside and big inside, with spacious seating for six and the largest luggage locker of them all.

### Full-Circle Visibility!

With narrower corner pillars, picture windows all around and a rear window that's 48% larger you have "all-direction" vision that adds to your enjoyment and your safety.



### Out-performs them all!

Ford's completely new 101-h.p. high-compression, low-friction Six, with free-turning overhead valves, is the most modern Six in the industry. And Ford's high-compression V-8, now 110 h.p., is the most powerful engine in the low-price field. Both are available with performance-proved Fordomatic Drive.

### Exclusive Power Pilot Economy!

Both the new Ford Mileage Maker Six and the Strato-Star V-8 have the exclusive Ford Automatic Power Pilot. This completely integrated carburetion-ignition-combustion system gives you high-compression "go" on "regular" gas.

### New Coachcraft Bodies!

Ford's new Coachcraft Bodies are longer, stronger... distinctive in their modern beauty. They offer new hull-tight construction which seals out dust, weather and noise. And Ford has more color and upholstery combinations than any other car in its field!

### Out-values them all!

With such modern design and engineering features as new Flight-Style Control Panel, new Power-Pivot Clutch and Brake Pedals, new Center-Fill Fueling, and new counterbalanced hood and deck lid, Ford adds up to more dollars and cents value than any car in its price class!

Fordomatic Drive, Overdrive, white sidewall tires (if available) and two-tone colors on Customline Sedan optional at extra cost. Equipment, accessories and trim subject to change without notice.

# '52 Ford

Come in and see it Friday

F.C.A.

## LOHAUS MOTOR CO.

O'NEILL

PHONE 16

## It's a fact!

## Electrical LIVING IS Better LIVING!



From coal buckets and woodpiles, from washtubs and storm-tossed clotheslines to today's modern ALL ELECTRIC home, is a thrilling story of steady, continued progress!

It is a proven fact that, LIVING ELECTRICALLY is truly, BETTER LIVING



In the modern ALL ELECTRIC home, daily routine goes on with an absolute minimum of effort! The uncertainty of weather, the old-fashioned guesswork, no longer exist to hurry the modern Homemaker! She lives and plans in the sure knowledge that ELECTRICAL living is truly, BETTER living!



The Man Behind The Scene— Important in the life of everyone, is your Consumers' service man! It is his job to see to it that your daily life is made easier, safer, more enjoyable, by good, dependable, ELECTRIC service!



For BETTER living...

## ELECTRICAL living!

SEE YOUR FAVORITE ELECTRIC DEALER OR

CONSUMERS PUBLIC POWER DISTRICT