

than one premium.

All Crocheting		
	1st	2nd
Bag, cotton, wool or silk	.65	.35
Afghan	1.25	.65
Bed Spread	.65	.35
Buffet Set	.65	.35
Centerpiece	.65	.35
Collar & Cuff Set	.65	.35
Dress, child's	.65	.35
Doily	.65	.35
Gloves	.65	.35
Scarf & Beret	.65	.35
Hat, girl's and women's	.65	.35
Scarf, buffet	.65	.35
Scarf, dresser	.65	.35
Scarf, piano	.65	.35
Sweater, children's	.65	.35
Sweater, men's	.65	.35
Sweater, women's	.65	.35
Table Cloth	1.00	.50

Embroidery		
A — APPLIQUE		
Apron	.65	.35
Buffet Set	.65	.35
Centerpiece	.65	.35
Luncheon Cloth	.65	.35
Scarf, pillow	.65	.35
Towel, tea set	.65	.35
Towel, guest	.65	.35
Vanity Set	.65	.35
Window Curtains	.65	.35
B — CROSS STITCH:		
Buffet Set	.65	.35
Centerpiece	.65	.35
Scarf, dresse	.65	.35
Towel, guest	.65	.35
Towel, tea set	.65	.35
Vanity set	.65	.35
Window Curtains	.65	.35
C — CUT WORK:		
Centerpiece	.65	.35
Pillow Slips	.65	.35
Scarf, piano	.65	.35
Scarf, dresses	.65	.35
Vanity Set	.65	.35
D — EMBROIDERED:		
Bag, laundry	.65	.35
Buffet Set	.65	.35
Bedsread	.65	.35
Centerpiece	.65	.35
Chair Set	.65	.35
Crib Cover	.65	.35
Drawn Work	.65	.35
Doily	.65	.35
Dress, baby's	.65	.35
Dress, child's	.65	.35
Hemstitching	.65	.35
Scarf, dresser	.65	.35
Scarf, piano	.65	.35
Sewing Machine cover	.65	.35
Towel, guest	.65	.35
Towel, tea set	.65	.35
Wall panel	.65	.35
Window curtain, 2	.65	.35
E — SOFA PILLOWS:		
Appliqued	.65	.35
Crocheted	.65	.35
Cross Stitched	.65	.35
Embroidered	.65	.35
Organdy	.65	.35
Patch Work	.65	.35

Knitting		
Afghan	1.25	.65
Bags, cotton, silk or wool	.65	.35
Bedsread	.65	.35
Beret and Scarf	.65	.35
Dress, child's	.65	.35
Dress, lady's	.65	.35
Gloves or Mittens	.65	.35
Lace, 1 yard or more	.65	.35
Socks	.65	.35
Sweater, child's	.65	.35
Sweater, women's	.65	.35
Sweater, men's	.65	.35
Quilts		
Applique	1.25	.65
Cotton Patchwork	1.25	.65
Cross Stitch	1.25	.65
Outline Work	1.25	.65
Worsted patchwork	1.25	.65
Rugs		
Braided	.65	.35
Crocheted	.65	.35
Fluff	.65	.35
Hooked	.65	.35
Indian Tied	.65	.35
Knit	.65	.35
New Art, made with crooked crochet-like needle	.65	.35
Singer Craft	.65	.35
Tufted Waffle Weave	.65	.35
Woven, hand	.65	.35
Woven, hand loom	.65	.35

Miscellaneous		
Specimen, oil painting	.65	.35

Specimen, water color or	.65	.35
Tapestry painting	.65	.35
Wood Fiber Flower	.65	.35
Best Antique	.65	.35

Special Awards

OMAR FLOUR
 Division — Betty Crocker
 Chiffon Cake.
 Special Award — Oneida Community silver plated cake plate awarded by General Mills, Inc., makers of Softasilk Cake Flour.
 Entry Requirement: To be eligible for the Betty Crocker award, entries must be made with Softasilk cake flour.
 (Continued on Page 15.)

Steady Improvement Helps Fair —
 A well-planned improvement program that has been carried out over a period of years helps to make the Holt County Fair and Rodeo the success that it is today.

Each year a certain amount of money is set aside for maintenance and improvement.

Two years ago extensive building was conducted.

Gypsum has been used as a plaster since ancient times.

WESTEND PRODUCE

Phone 110 Ewing, Nebr.

Cash Buyers of
CREAM - POULTRY - EGGS

We Have a Complete Line of COOPER and FOXBILT FEEDS
 Country Trucking and Route Service

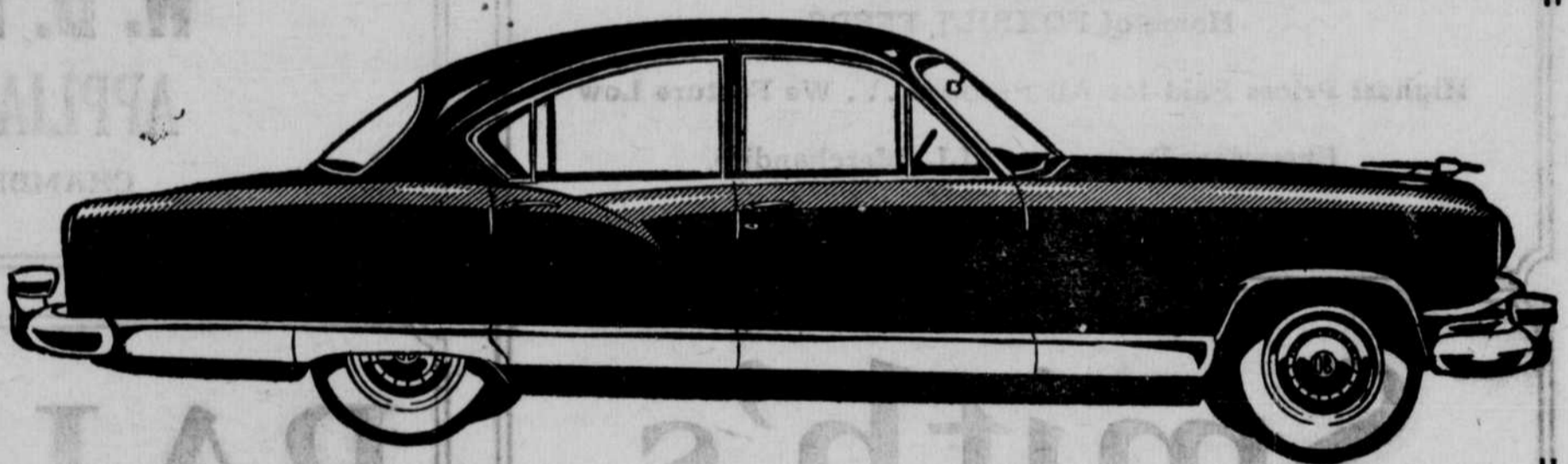
ELKINS' FEED & PRODUCE

Your Independent Cream Buyer in Chambers

WE BUY:	WE SELL:
@ Poultry	@ Feed
@ Cream	@ Salt
@ Eggs	@ Supplies

Stanley Elkins — Operator . . . Chambers

1951 Kaiser



The Newest Car on the Road
 The Most Beautiful Car You've Ever Seen
 The Only Car With Anatomic Design



ALLIS-CHALMERS

SALES & SERVICE



BROWN MOTOR & IMPL.

— CHAMBERS —

BUILT TO
 BETTER
 THE
 BEST
 ON THE ROAD.