

New Church Goes Up Near Amelia

AMELIA—The members of the Bethany Free Methodist church, south of Amelia, are constructing a new stucco church with full-sized basement. The basement is completed and "good progress" is being made on the church. Rev. Fritz Hans, of Ewing, is assisting with other local help.

PROLIFIC SOWS
AMELIA—Orland Fryrear reports two of his purebred sows had a litter of 29 pigs.

Other Amelia News
Mike Curran, Mrs. Delia Ernst, Mrs. Leo Marcellus and girls and Karen Anne Carr visited at the Tommie Currans home in Neligh Sunday, September 26.

Mr. and Mrs. Ed White, Mr. and Mrs. Earnie White and Mrs. Elmer Coolidge were in Neligh Monday, September 27.

Gale and Lyle Fix and Jimmie LaFoy went to Scottsbluff Monday, September 27, to work in the potato fields.

Mr. and Mrs. Robert Rees were in Minnesota last week where Robert was buying cattle.

Billie and Margie Ann Sammons and Gloria Ott drove to Omaha Saturday, September 25, returning Sunday. They took Mrs. Mamie Sammons there.

Mr. and Mrs. Frank Pierce and Rae Dee Wickham attended the mission festival at the Lutheran church in Chambers Sunday, September 26.

Rev. and Mrs. Dallas Wadsworth and children, of Ipswich, S. D., visited at Clyde Burge's Friday evening.

Delinquent Real Estate Tax List Publication

Notice is hereby given that on November 1st, 1948, that being the first Monday in November, there will be a public auction of all lands and town lots in Holt County, Nebraska on which taxes are delinquent for the year 1947 or prior years. That at said sale so much of the tracts or town lots will be sold as may be necessary to pay all delinquent taxes, accruing interest and costs thereon to date of sale. That said sale shall continue from day to day until all tracts or lots have been offered.

Following is a complete list of all tracts and town lots in Holt County on which taxes are delinquent for one year or more.

The amount of the 1947 delinquent tax follows each description, but does not include, back taxes, interest or costs.

J. ED HANCOCK,
County Treasurer.

ANTELOPE PRECINCT		
Township 29, Range 10		
Description	Sec.	Amt.
NW 1/4	2	\$ 43.00
W 1/2	4	
NE 1/4 & SE 1/4	5	
NE 1/4	6	103.40
NW 1/4, S 1/2	6	51.46
NE 1/4	20	46.96
SW 1/4	20	46.96
SE 1/4	22	21.28
SW 1/4	29	31.10
NE 1/4	31	33.10
W 1/2 SW 1/4	31	16.70
NW 1/4	33	33.10
NW 1/4	36	69.92

ATKINSON PRECINCT		
Township 30, Range 14		
Description	Sec.	Amt.
E 1/2	3	103.84
NW 1/4	3	55.40
N 1/2 N 1/2	6	17.76
SW 1/4	9	49.32
SE 1/4	24	45.30
Pt. SW 1/4 SW 1/4	27	54.00
Pt. SE 1/4 SW 1/4	28	22.00
Pt. SW 1/4 NW 1/4	29	14.82
Nondescripts:		.96
Pt. No. 3	33	18.48
Pt. No. 3	33	2.60
1/2 No. 8	33	12.98
No. 17	33	23.84
No. 19	33	21.78

Western Townlot Co. Add.		
Description	Sec.	Amt.
1-2	42	29.56
9 & Pt. of 10	43	29.56
Pt. 10- All 11-12	43	88.66

Tuller & McNichols Add.		
Description	Sec.	Amt.
6-7	1	43.20
11 to 15 Inc.	1	86.06
17 to 54	1	27.54
16-17	2	40.84
10-11-12	4	32.56

Township 30, Range 14		
Description	Sec.	Amt.
Pt. No. 17	32	20.44
66 ft. No. 20 A	32	4.50
No. 34-1	32	3.02
60x165 ft. No. 44A	32	2.42

Township 31, Range 14		
Description	Sec.	Amt.
SE 1/4, NW 1/4	21	67.84
S 1/2	22	71.70
SE 1/4	26	40.12
NW 1/4	30	36.64
SW 1/4	30	36.64
SE 1/4	30	58.64
NE 1/4 & SW 1/4	31	69.98
SE 1/4	35	19.87
NE 1/4	35	39.88

Township 30, Range 15		
Description	Sec.	Amt.
E 1/2 SE 1/4, SW 1/4, N- W 1/4 SE 1/4	1	77.46
W 1/2 SW 1/4	2	16.04
S 1/2 NE 1/4, SE 1/4	3	66.18
E 1/2	11	89.82
NW 1/4	12	15.30
SE 1/4	12	15.30

Township 31, Range 15		
Description	Sec.	Amt.
S 1/2 NW 1/4, S 1/2	26	44.80
NE 1/4	26	106.80
NE 1/4	26	37.20

ATKINSON CITY		
Description	Blk.	Amt.
E 60 ft. 2-3	2	18.66
8 & S 1/2 9	2	47.62
W 60 ft. of 1-16 & 17	3	72.74
6-9	5	59.10
12	5	29.56
13	6	77.48
E 60 ft. 8	7	40.84
13	7	40.84
N 40 ft. of 1-2 & 3	8	59.10
15 1/5 ft. 4	8	
8 x 25 ft. East Side	8	
S 25 ft. 4	8	4.50
All 5	8	35.80
12-13	9	5.92
4	10	39.04
Pt. 11- E 24 ft. 12.	10	
15-16- S 9 7/10 ft.	10	102.14
2	11	45.88
25 ft. 9-10 & 11	11	39.96
4-5	16	13.34
8 to 12 Inc.	16	29.88

Neeley's Addition		
Description	Blk.	Amt.
S 1/2 5- N 21 ft. 9	B	36.12

Neeley's 2nd Add.		
Description	Blk.	Amt.
1-2-3	E	63.86
4	E	13.64
9-10	F	22.22
N 1/2 10 & All 11	F	22.79
12	G	4.45
2-3	I	6.84
3	I	26.06
8	K	18.06
7-8-9	L	96.48

Wixon's Add.		
Description	Blk.	Amt.
1	33	20.44
4	33	4.48
7	33	34.04
8	33	4.48
1 to 8 Incl.	34	68.32
E 1/2 5	35	2.40
6-7	35	13.33
6	37	27.22

Bitney's Addition		
Description	Blk.	Amt.
4-5	18	36.40
7	18	88.66
8	18	30.75
8	22	8.92
N 1/2 8	24	4.48
1	26	36.38
6-7	26	155.30
4 to 8 Inc.	29	40.84
1	30	7.44
2-3-4-5	32	81.90

Kimbball & Blairs Add.		
Description	Blk.	Amt.
10	13	50.00
10-11	34	65.66
12	34	66.22
5	35	20.44
1-2-3	39	14.07
4-5-6	39	65.94
1	40	44.10
3-4	40	18.06
5	40	5.90

Collins' 2nd Add.		
Description	Blk.	Amt.
22-23	1	16.30
24-25-26	1	13.04

Collins' 1st Add.		
Description	Blk.	Amt.
6-7-8	2	20.74
9-10	2	7.44
19-20	2	5.92
25	2	22.22
13 30 ft. 6- All 7	3	34.32
W 1/4	3	4.50

Ballon's Add.		
Description	Blk.	Amt.
1-2-3	1	26.96
6-7	1	20.44
15-17-18	1	18.66
23-24-25	1	30.48
7-8	2	2.40
2	2	22.50

Morningside Addition		
Description	Blk.	Amt.
9-10	1	77.76
S 1/2 6, all 7 & 8	1	
11-12-13, S 20 1/2 ft.	1	14.84

CHAMBERS PRECINCT		
Township 26, Range 12		
Description	Sec.	Amt.
W 1/2 NW 1/4, W 1/2 S- W 1/4, SE 1/4 SW- 1/4	1	46.24
All	12	38.08
NW 1/4	20	51.36
N 1/2 SW 1/4	29	8.21
Pt. NE 1/4 SE 1/4 No. 14	30	3.42
N 1/2 S 1/2	31	74.40
N 1/2 S 1/2	32	46.30

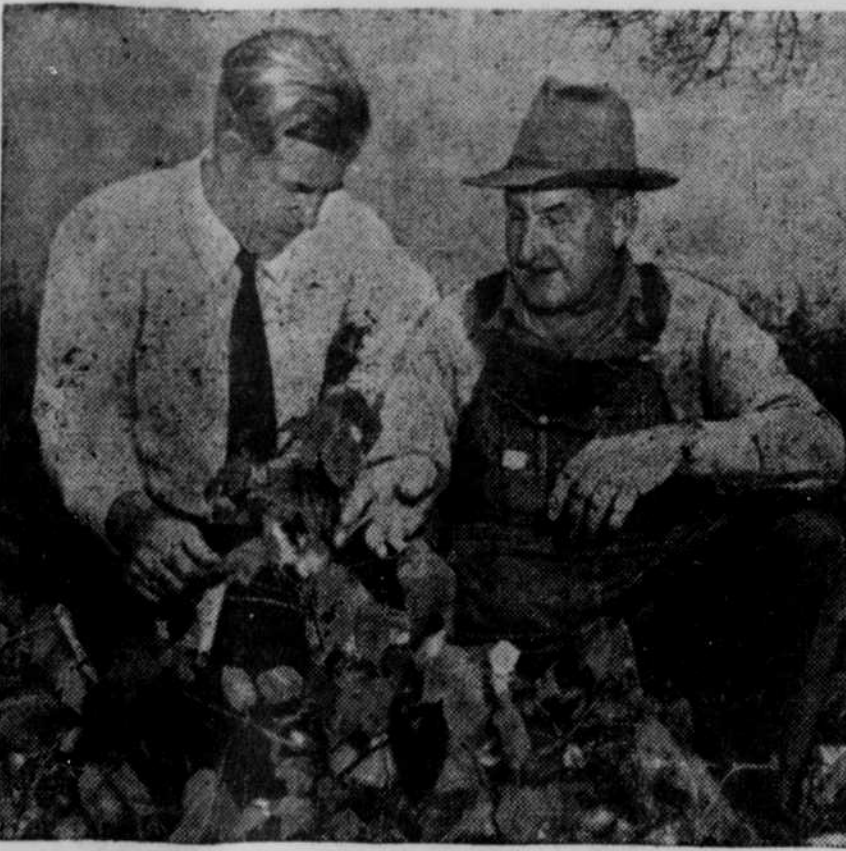
Township 26, Range 13		
Description	Blk.	Amt.
S 1/2	3	68.04
NE 1/4	22	50.70

CHAMBERS VILLAGE		
Description	Blk.	Amt.
8-9-10	B	46.60
1-2	C	45.24
2/3 of 5-6 & 7	C	32.44
1/3 of 5-6 & 7	C	21.64
4	D	4.44
3	D	5.78
9 & N 100 ft. 10	D	17.28
S 20 ft. 10	D	39.20
W 50 ft. 11	D	42.58

Baker's Addition		
Description	Blk.	Amt.
1-2, N 22 rds. of W- 1/2 3	1	38.08
Pt. 7	1	17.26

Baker's 2nd Add.		
Description	Blk.	Amt.
5-6	1	11.18
9	1	15.26

Nondescripts:		
Description	Blk.	Amt.
Township 26, Range 12		
Lots	Blk. <td>Amt.</td>	Amt.
Pt. No. 6	19	1.40
4-5	19	35.14



HENRY IN THE LAND OF COTTON . . . Henry Wallace, Progressive party presidential candidate, fared but ill during his campaign tour through the South when he discovered that the people there weren't having any of the political ideas that he preached. As a relief from the moral battering he was taking from his southern audiences, Wallace turned now and then to more basic things. Here, at Boaz, Ala., he talks about cotton with Robert Knott, who has 20 acres of it.

Township 33, Range 13		
Description	Blk.	Amt.
S 1/2 N 1/2, S 1/2	24	89.24

CONLEY PRECINCT		
Township 25, Range 12		
Description	Sec.	Amt.
SE 1/4	10	55.28
All	18	101.30
NW 1/4	20	12.40
NW 1/4 SW 1/4, S 1/2 S- W 1/4	20	15.33
S 1/2 NW 1/4	27	13.48
NE 1/4	30	11.27

Township 25, Range 13		
Description	Blk.	Amt.
S 1/2 NW 1/4, N 1/2 S- W 1/4	2	25.60

Township 25, Range 10		
Description	Blk.	Amt.
W 1/2 SE 1/4, S 1/2 SW- 1/4	2	39.18
SE 1/4	3	33.44
NW 1/4, S 1/2	7	49.96
NE 1/4	10	32.66
All	11	
W 1/2	12	110.44
All	13	

Township 25, Range 14		
Description	Blk.	Amt.
E 1/2, E 1/2 NW 1/4, N- E 1/4 SW 1/4	14	71.30
SE 1/4 SW 1/4	14	3.64
N 1/2 N 1/2	18	18.50
NW 1/4 NE 1/4, S 1/2 N- E 1/4	19	21.48
NW 1/4, N 1/2 SW- 1/4	19	21.48
S 1/2 SW 1/4, SE 1/4	19	21.48
SW 1/4	20	71.26
SW 1/4 NW 1/4	20	6.92
W 1/2 NE 1/4, NW 1/4	23	

Township 25, Range 10		
Description	Blk.	Amt.
E 1/2 SE 1/4	10	11.92
W 1/2 SW 1/4	11	9.60
E 1/2 SE 1/4	12	
NE 1/4 NE 1/4	13	29.62
NW 1/4 NW 1/4	14	4.80
E 1/2 NE 1/4	15	13.44
SE 1/4	24	60.52
W 1/2 SE 1/4	34	15.42

Township 25, Range 9		
Description	Blk.	Amt.
N 1/2 N 1/2	1	30.06
SW 1/4	1	47.20
NW 1/4	12	70.36
W 1/2 NW 1/4, SE 1/4 N- W 1/4, SW 1/4	18	
NE 1/4 NW 1/4	19	60.44
W 1/2 NW 1/4, N 1/2 S- W 1/4	19	28.48
W 1/2	22	59.36
W 1/2 SW 1/4	23	111.78
NE 1/4	27	41.22
SW 1/4	27	67.16
S 1/2 N 1/2 SW 1/4, S 1/2 SW 1/4	28	29.76
N 1/2 SW 1/4	29	21.86
SE 1/4	29	60.78
NW 1/4	34	91.76
NE 1/4	35	87.74

Township 25, Range 10		
-----------------------	--	--