

Inman Tigers Go State Class D Tourney

Meet Hot Hildreth Five Today in State Classic

SPECIAL TO THE FRONTIER
Coach Ralph Gray's Inman Tigers clinched a ticket to the meet at Pierce Saturday night state class D basketball tournament by nicking Sacred Heart, of Norfolk, 26-25, in an inter-district playoff.

In district class D play at Neligh the previous week, the Tigers had downed Petersburg, 40-21, in the first round, punished Chambers, 36-20, in the semifinals, and edged St. Boniface, of Elgin, 33-31, in the title bout.

The Tigers competed at Pierce in a 4-team inter-district playoff, handily disposing of Niobrara, 34-14, in the first game and edging Sacred Heart in the harrowing Saturday night finals.

Inman faces Hildreth, one of the seeded teams in the opening round of the state tournament. The game is scheduled for 7 p. m. today (Thursday) on the freshman court in the University of Nebraska coliseum. The winner faces the winner of the Comstock-Douglas game.

Inman lost to Uehling, 30-26, in the opening round of state tournament play last year. Holt had three entries in the state meet in 1947. St. Joseph's, of Atkinson, won the state class C title and the O'Neill Eagles were spilled by Tecumseh, 39-30, in first round class B play.

Inman Breezes Through Niobrara
PIERCE—The Inman Tigers had little difficulty with Niobrara, winning 34-14 after a comfortable 17-7 halftime advantage.

The boxscore:

INFAN (34)	fg	ft	pf	pts
Heck, f	6	3	3	15
L. Sholes, f	0	0	2	0
G. Hartigan, f	0	1	2	1
Mossman, c	4	2	2	10
G. Sholes, g	3	0	1	6
P. Hartigan, g	0	2	0	2
Totals	13	8	10	34

NIOBRARA (14)	fg	ft	pf	pts
Clark, f	3	1	5	7
Nilson, f	0	1	1	1

Amana

MODEL 200 FREEZER COOLER



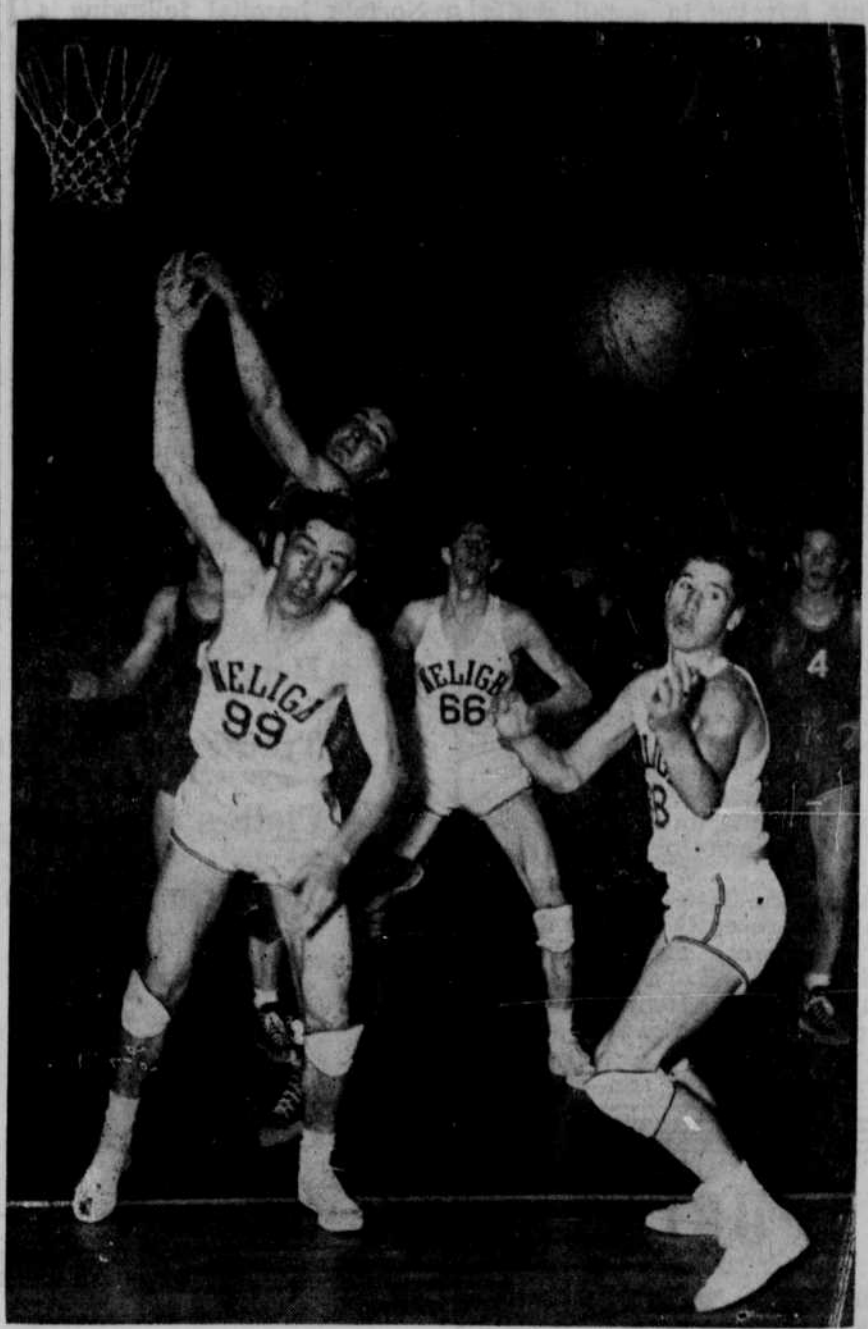
THE COMPLETE HOME FROZEN FOOD LOCKER PLANT . . .

A walk-in factory prefabricated unit. Ideal for homes, estates, farms, and individual commercial uses, such as restaurants, food shops, and hotels. Features contact freezing—23 cu. ft. zero compartment. 100 cu. ft. refrigerated cooler. Foods always accessible. See us for information.

DEWEY ELECTRIC CO.
South Sioux City
Phone 4763
Creighton
Phone 28Y

SAFETY GLASS
APPROVED LAMINATED GLASS
For Automobile Use

SKALOWSKY GLASS CO.
O'NEILL & NORFOLK



FREE BALL . . . This is a third-quarter action shot in the class B district championship basketball game here Friday night in which the Ainsworth Bulldogs defeated the Neligh Warriors, 35-26. Nelighites in the photo are: Center Jake Michaelson (99), Forward Doc Hoggins (66), and Guard Bus Marshall. The soaring Ainsworth player is Center Don Richardson. In the right background is Forward Athens (4), of Ainsworth. — The Frontier Photo by John H. McCarville.

Bransrter, c	0	0	2	0
Eberly, c	1	1	2	3
Colwell, g	0	3	3	3
T. Brans'r, g	0	0	1	0
Totals	4	6	14	14

Saturday Playoff Nip-and-Tuck

PIERCE—The Saturday night inter-district class D playoff between Sacred Heart, of Norfolk, and Inman, was a nip-and-tuck thriller from start to finish. The quintets were tied 5-5 at the end of the first period, Inman led 11-9 at halftime and 16-15 at the close of the third period.

Gordon Sholes, Paul Hartigan and Delmont Heck got into the scoring column during the first period, and the Tigers picked up 6 points in the second with buckets by Heck and Max Mossman and free throws by Gordon Sholes and Mossman.

In the third, Heck connected twice from the field and Mossman dunked a free throw, while Sacred Heart's Don Kellogg kept the Knights in the game.

In the nerve-wracking fourth, Dick Johnson found the range for 3 fielders and Don Mannion and Duane Croty tallied a fielder each for the parochial team's cause. For Inman, Hartigan hit twice from the field, Leonard Sholes dropped in 3 consecutive free throws, and Mossman tallied 3 points.

SACRED HEART (25)	fg	ft	pf	pts
Crotty, f	1	0	3	2
Corkle, f	0	2	3	2
Manion, f	1	0	0	2
Stutesman, c	1	0	3	2
Johnson, g	3	0	2	6
Kellogg, g	3	5	5	11
Totals	9	7	16	25

INMAN (26)	fg	ft	pf	pts
D. Heck, f	3	1	5	7
L. Sholes, f	0	3	2	3
G. Hartigan, f	0	0	1	0
Mossman, c	2	3	2	7
G. Sholes, g	1	2	2	4
P. Hartigan, g	2	1	3	5
Totals	8	10	15	26

MONEY TO LOAN
ON AUTOMOBILES TRUCKS TRACTORS EQUIPMENT FURNITURE
CENTRAL FINANCE CORP.
C. E. JONES, Manager
O'NEILL : NEBRASKA

AINSWORTH COPS DISTRICT B TITLE

Neligh Setback 35-26 in Finals; O'Neill in 3d Place

A smooth Ainsworth basketball team came to town last week with one of the best seasons' records in these parts. The Bulldogs defeated St. Mary's, of O'Neill, O'Neill high and Neligh to capture the regional class B title.

Ainsworth met Stanton, one of the seeded teams, in first round state tourney play in B Wednesday at Lincoln.

The O'Neill meet opened Wednesday, March 3, with Ainsworth flogging St. Mary's, 40-29; Burwell trimming Creighton, 43-26; Neligh defeating Valentine, 39-28, and O'Neill overwhelming Bassett, 48-19. The favorites were the winner in each contest.

The surprise of the tourney, however, came in last Thursday night's semifinals when the Neligh Warriors ousted the favored Burwell Longhorns, 38-29. Neligh grabbed an early lead that was relinquished only once—for two minutes.

Neligh pulled away from Burwell late in the game. Hoggins, a sub center, started the surge with a brace of free-throws in his archless, unorthodox way. Neligh's Francis Keil was good for 6 of his evening's 19 points during the fading moments and Burwell was out of the tourney.

O'Neill and Ainsworth were in a 12-12 deadlock at intermission in the other semifinal game, but the Bulldogs pulled away in the third and won, 37-26.

In Friday night's championship tilt, the Ainsworth Bulldogs were back in early season stride. Although short in stature they were long on ball-handling and fast breaks. The Bulldogs' scoring was evenly distributed, while Keil showed well for Neligh, both offensively and defensively.

AINSWORTH (35)	fg	ft	pf	pts
Anthens, f	3	0	1	6
Richardson, f	3	2	2	8
Raitt, c	4	2	4	10
Leonard, f	3	3	2	9
Crook, g	0	2	3	2
Randle, g	0	0	0	0
Swett, g	0	0	0	0
Totals	13	9	12	35

NELIGH (26)	fg	ft	pf	pts
Keil, f	4	1	5	9
J. Scofield, f	2	0	0	4
Marshall, c	1	0	2	2
Michaelson, g	2	4	3	8
VanKirk, g	1	0	3	2
Hoggins, c	0	1	2	1
Totals	10	6	15	26

THE FRONTIER, O'Neill, Nebr., March 11, 1948.—PAGE 3



The O'Neill Eagles, spearheaded by Big Bob Matthews, added to Burwell's tournament injury by grabbing third place honors with a 31-23 victory. The Eagles played more aggressive ball than their opponents and the Longhorn gunners had trouble working the ball into scoring position.

BURWELL (23)	fg	ft	pf	pts
G. Cass, f	0	0	1	0
M. Cass, c	2	0	1	4
Brenneman, f	1	0	2	2
Hallock, f	1	0	0	2
Leach, g	1	0	0	2
Partridge, g	2	3	4	7
Scheffer, g	1	2	1	4
Tunncliff, g	1	0	1	2
Totals	11	5	12	23

O'NEILL (31)	fg	ft	pf	pts
Matthews, f	6	3	4	14
VanEvery, f	2	4	5	8
Godel, f	2	0	0	4
Erwin, c	1	0	2	2
Elkins, g	1	1	1	3
Osborn, g	0	0	2	0
Totals	12	7	14	31

W. F. Finley, M. D.
OFFICE PHONE: 28
First National Bank Bldg.
O'NEILL

points per game. Four other top point-getters were:
Don Richardson, Ainsworth, center 36
Francis Keil, Neligh, forward 34
Lowell Partridge, Burwell, guard 29
Dean VanEvery, O'Neill, forward 28

Reunion at Stevens Home—
INMAN—The country home of Mr. and Mrs. Earl Stevens, who reside north of Inman, was the scene of a family reunion on Sunday. Those present for the day were: Mr. and Mrs. Vern Wrede; Mr. and Mrs. Robert Stevens and family, of O'Neill; Miss Ruth Stevens, of Stanton, and Miss Vivian Stevens, of Norfolk.

Matthews Tourney's Highest Scorer

O'Neill's Bob Matthews was the highest scorer in the 8-team regional class B basketball tourney here last week. A forward on the meet's third-place team, Big Bob fielded 38 points in 3 games, nearly 13

Try Frontier want ads!

Public Dance
AMERICAN LEGION BALLROOM
— O'Neill —
HANK WINDER
AND HIS ORCHESTRA
Tuesday, March 30
Adm.: \$1 Per Person, Including Tax

Brown McDonald's
Junior Editions

—in Spring's Smartest Shorties

High Colors and New Plaids

Wear them over anything . . . wear them anywhere . . . they are the talk of the town. Any way you look at them the effect is exhilarating. Spirited but softer, more feminine. Do come in as soon as you can for a try-on to get the effect on YOU.

Sizes 9 to 15 and 10 to 20
19.95 and 29.95

Brown-McDonald's—Where a Little Goes Farther



WILD SCRAMBLE . . . The mass of flesh above is that owned by Ainsworth's Riatt (on top) and Neligh's Keil (See story at right.) — The Frontier Photo by John H. McCarville.

Flower Hats

—to cover your brow with clusters of bloom
2.98 TO 6.95

Every one packed with lively, lovely color to be the companion piece to your newest and nicest apparel. Come in soon and make your selection.

Brown McDonald's