

### CARDINAL CAGE PROSPECTS GOOD

#### Pruss, Biglin to Pilot 1946-'47 Quintet; Graduation Hurt

Basketball prospects at St. Mary's academy are good.

At least, that's what Rev. R. J. Lisco, the director of athletics, said Wednesday as the Cardinals completed their second week of priming for the winter campaign.

At the same time, Father Lisco announced that Ivan Pruss and Joe Biglin have been appointed coaches. Pruss has tutored previous Card cage teams, and Biglin, a 1946 graduate, is a former student manager.

There are gapping shoes to be filled on the Hilltop, however, because the 1946 graduation exercises cut deeply into basketball ranks. Missed most are these six members of last year's highly-successful Card edition, now widely dispersed: William Froelich, Donald Willson, Bob Wallace, Jim Merriman, Eddie Condon and John Baker.

Five lettermen returning are Tom Harty, Ed Hynes, Jerry Tomjack, Jim Donohoe and Jim Marne.

#### Promising Frosh

Promising material includes Arlen Miles, Dick, McNichols, Jack Gatz, Pat Hickey and Spud Cavanaugh, who were members of the sparkling St. Mary's grade school team last season that won 14 out of 15 starts. Other prospects include Dan DeBacker, John Bohn, Ray Sullivan, Bob Koci, and Donald Sauser.

The Cards will pry off the lid of the 1946-'47 season here next Tuesday when Inman comes to town with a scrappy band of Wildcats.

The schedule:

December 10—Inman, here; 13, O'Neill high, here; 15, Holy Trinity of Hartington, here; 18, St. Joseph's of Atkinson, there; 29, St. Patrick's of North Platte, there.

January 3—St. Agnes of Alliance, here; 6, Inman, here; 10, Page, here; 13, Chambers, here; 21, Page, there; 22, St. Joseph's, here; 24, Orchard, here. 28-29-30, Holt county tournament, at O'Neill.

February 3 — Spaulding high, there; 6, Burke, S. D., there; 9, Sacred Heart of Norfolk, here; 11, Tilden, here; 16, Holy Trinity of Hartington, there; 18, Orchard, there; 21, Spaulding academy, here; 26-27-28—Class C district tournament, at O'Neill.

### LEGAL NOTICE

(First publication Dec. 5, 1946.)

#### NOTICE OF DISSOLUTION OF PARTNERSHIP

TO WHOM IT MAY CONCERN: Public notice is hereby given that the partnership lately existing between Dale Fetrow, of Holt County, Nebraska, and W. W. Waller, of Holt County, Nebraska, under the firm name of Fetrow & Waller, was dissolved on the 28th day of September, 1946.

The business formerly carried on by said partnership will be

conducted in the future by Dale Fetrow.

Dated this 4th day of December, 1946.

30-33 DALE FETROW  
W. W. WALLER.

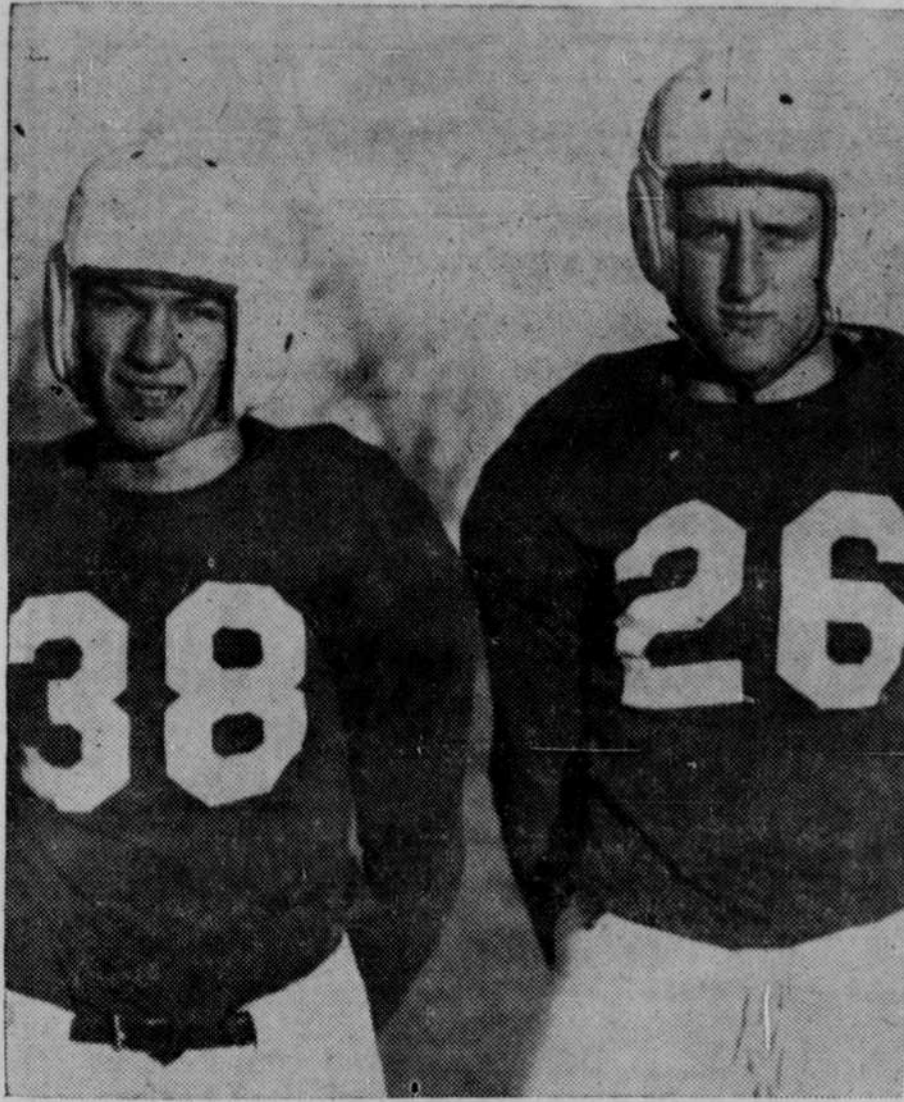
Read the classified ads. tf

W. F. FINLEY, M. D.

OFFICE PHONE: 28  
First National Bank Bldg.  
O'NEILL

R. H. SHRINER  
GENERAL INSURANCE  
Hail Bonds  
Plate Glass  
Live Stock  
Phone 106 Farm Property  
Wind & Tornado, Trucks & Tractor, Personal Property  
REAL ESTATE, LOANS, FARM SERVICE, RENTALS

**DANCE**  
At  
**SUMMERLAND**  
Ewing  
**SUNDAY**  
**DECEMBER 8TH**  
Music by  
**TED SCHROEDER**  
and His Orchestra

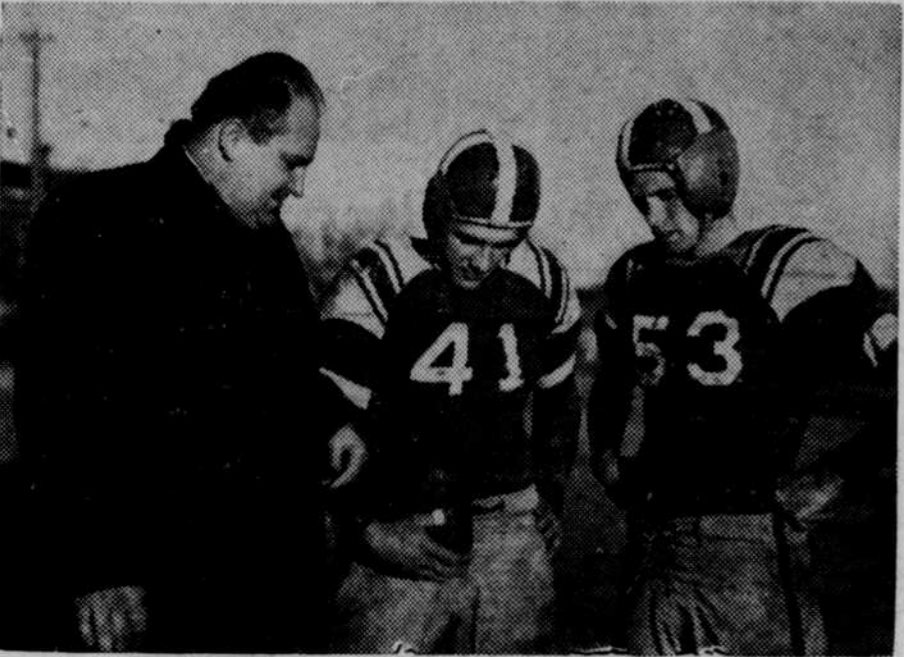


TIBBETTS, HARTMAN COCAPTAINS

This duo sparked the O'Neill high school Eagles through a near-perfect grid season. Half-back Dick Tibbetts (left), a 120-pound broken-field expert, led the Blues in scoring and ground-gaining and was a thorn in the side of every O-

Neill opponent. Guard Bill Hartman was a power in the Eagles' line and shared honorary cocaptain honors with Tibbetts.

The Eagles lost only to Ainsworth, 6-13.—The Frontier Photo by John H. McCarville.



THEY PLOTTED ST. PATRICK'S DOWNFALL

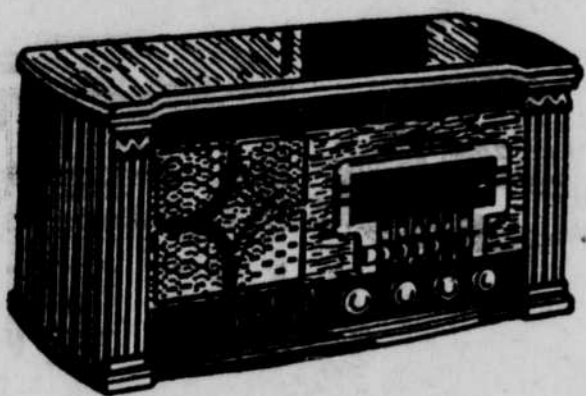
Rev. R. J. Lisco, assistant pastor at St. Patrick's Catholic church here and pilot of the 1946 St. Mary's academy grid team, is shown above talking things over with cocaptains

Back Jerry Tomjack (center), and Center Ed Hynes. The Cards hit their peak when they upset St. Patrick's of North Platte 26-25 in a six-man thriller.—The Frontier Photo by John H. McCarville.



**Good News**

Just what you've been waiting for!  
A new radio will cheer the whole family for many months to come!



**6-TUBE, 2-BAND, AC WALNUT TABLE RADIO**

**59.85**

A truly de luxe table model. Distinctively styled in a beautiful 18th Century cabinet. Greater selectivity and sensitivity. Improved push button tuning. Foreign and domestic broadcasts.

**LINDBERG**

HOME & AUTO SUPPLY

PHONE 108

O'NEILL

**William W. Griffin**  
ATTORNEY  
First National Bank Bldg.  
O'NEILL

### Money to Loan

ON  
AUTOMOBILES  
TRUCKS  
TRACTORS  
EQUIPMENT  
FURNITURE

**Central Finance Co.**  
C. E. Jones, Manager  
O'NEILL : NEBRASKA

### FIRST in 1917—

The Cooperative Land Bank System pioneered the idea of a long-term, amortized farm and ranch loan—the kind of loan that helps farmers and ranchers get out of debt.

### FIRST today!

A Land Bank loan is first choice today among farmers and ranchers who want all the best features in a farm or ranch loan—long term, low interest, prepayment privileges, Future Payment plan, and the understanding that only the farmers' and ranchers' own credit cooperative can offer.



**PIONEERS for 30 YEARS**

AND STILL LEADING THE WAY WITH AMERICA'S BEST FARM AND RANCH LOANS!

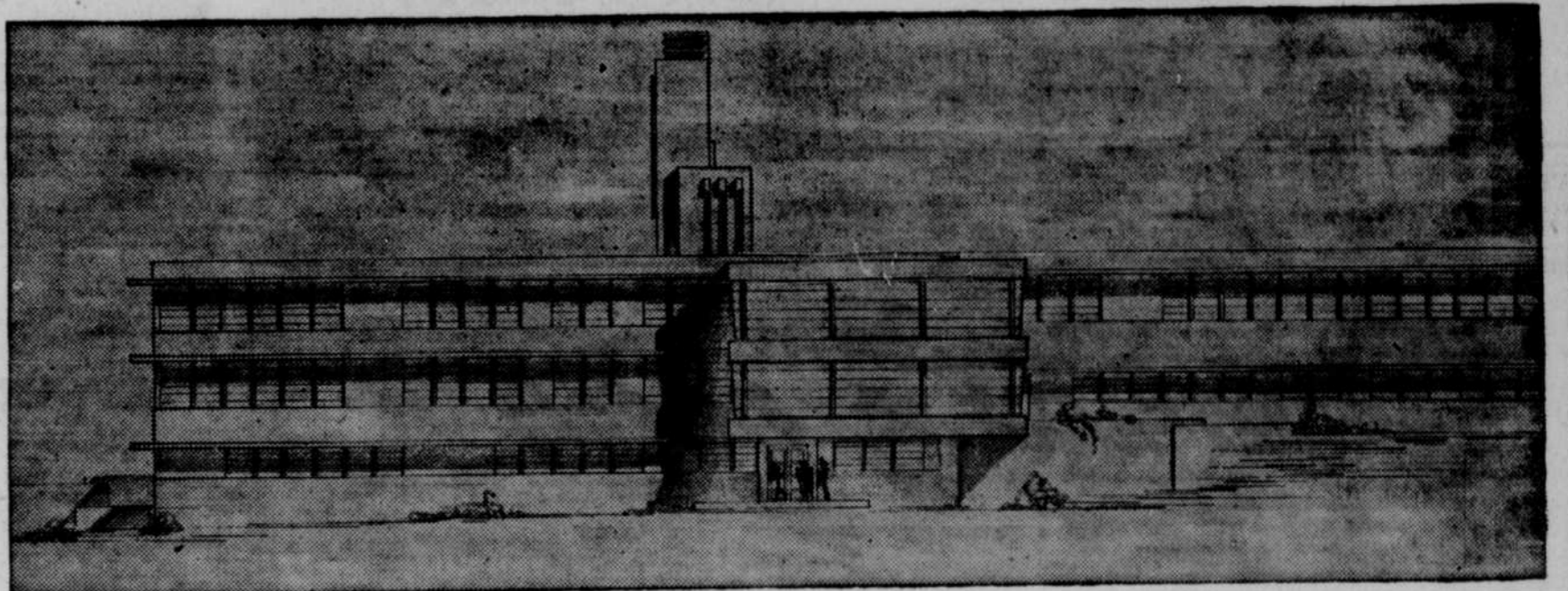
Get your  
**LAND BANK LOAN**  
through your

### ELKHORN VALLEY

National Farm  
Loan Association  
LYLE P. DIERKS  
Secretary-Treasurer

O'Neill

# AN IMPORTANT MESSAGE CONCERNING O'Neill's New Hospital



THE GENERAL COMMITTEE wishes to report that nearly \$50,000 has been collected thus far for O'Neill's New Hospital, which, when completed and equipped, will cost approximately \$200,000. This week our solicitors will resume their work throughout this region, now that the busy Fall season is over.

WE ARE IN RECEIPT of a letter from the Deputy Commissioner of Internal Revenue, Treasury Department, Washington, D. C., which states:

"Reference is made to your letter . . . in which you request a ruling that contributions to a nonprofit community hospital to be called the O'Neill Community Hospital or some similar name and located in O'Neill, Nebraska, will be deductible by the donors in arriving at their taxable net income . . .

"It is the opinion of this office that . . . contributions to be used in the erection of the hospital building will be deductible by the donors in arriving at their taxable net income in the manner and to the extent provided in section 23 (c) and (q) of the Internal Revenue Code, as amended. . .

"The collector of internal revenue for your district is being advised of this action."

THE NEED in this region for a modern, well-equipped and expertly-staffed Hospital is generally agreed. To those who have already contributed, we reaffirm our pledge that this Hospital will be established, and to those who have not contributed, we need your help now.

### The General Committee

W. J. Froelich, Chairman  
R. E. Armbruster C. E. Lundgren  
A. E. Bowen D. H. Clauson  
James Corkle James W. Rooney

Checks may be mailed to: L. C. WALLING, Chairman, Solicitation Committee, O'Neill's New Hospital, O'Neill, Nebraska.