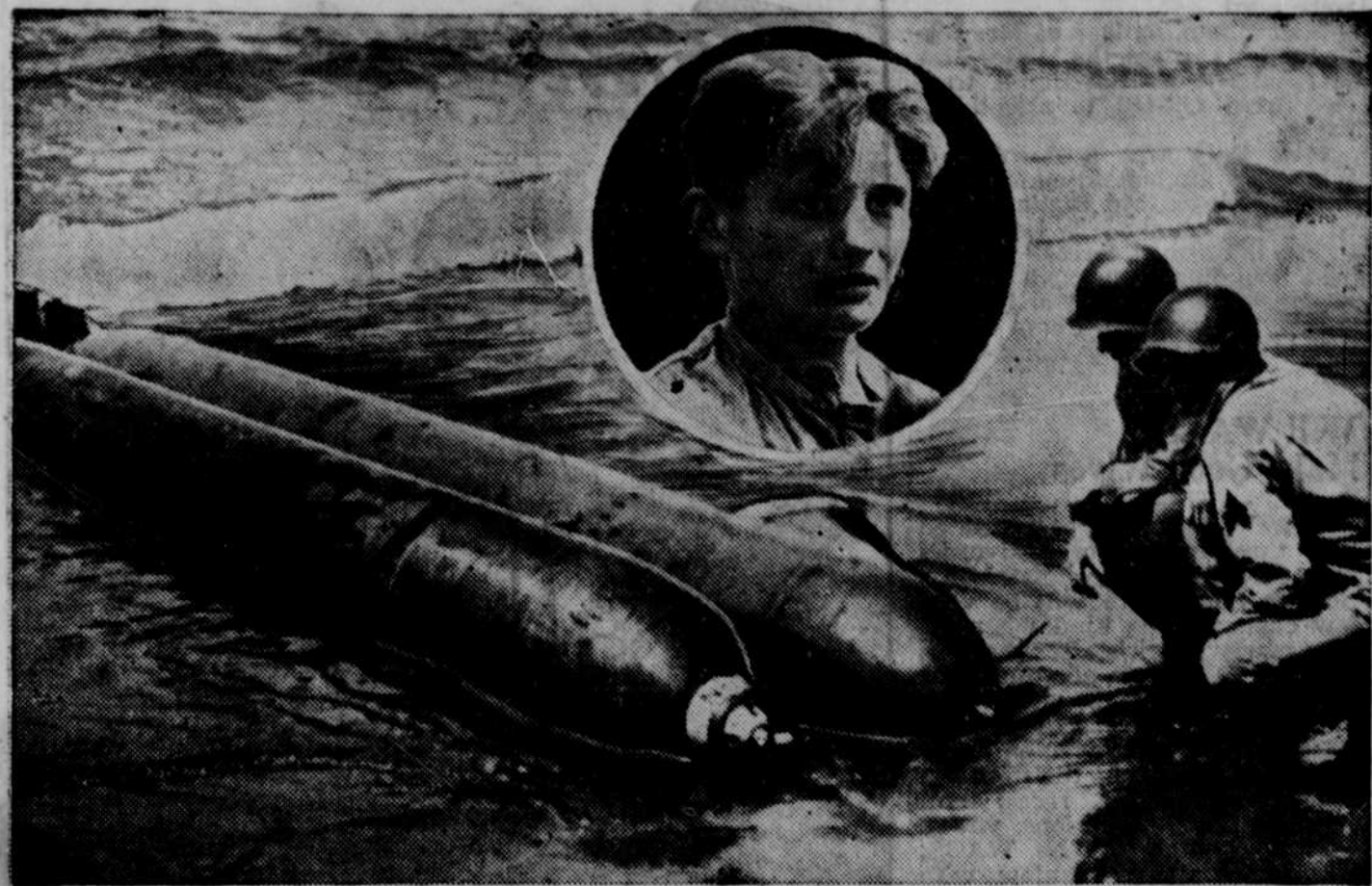


Nazi One-Man Submarine and Pilot

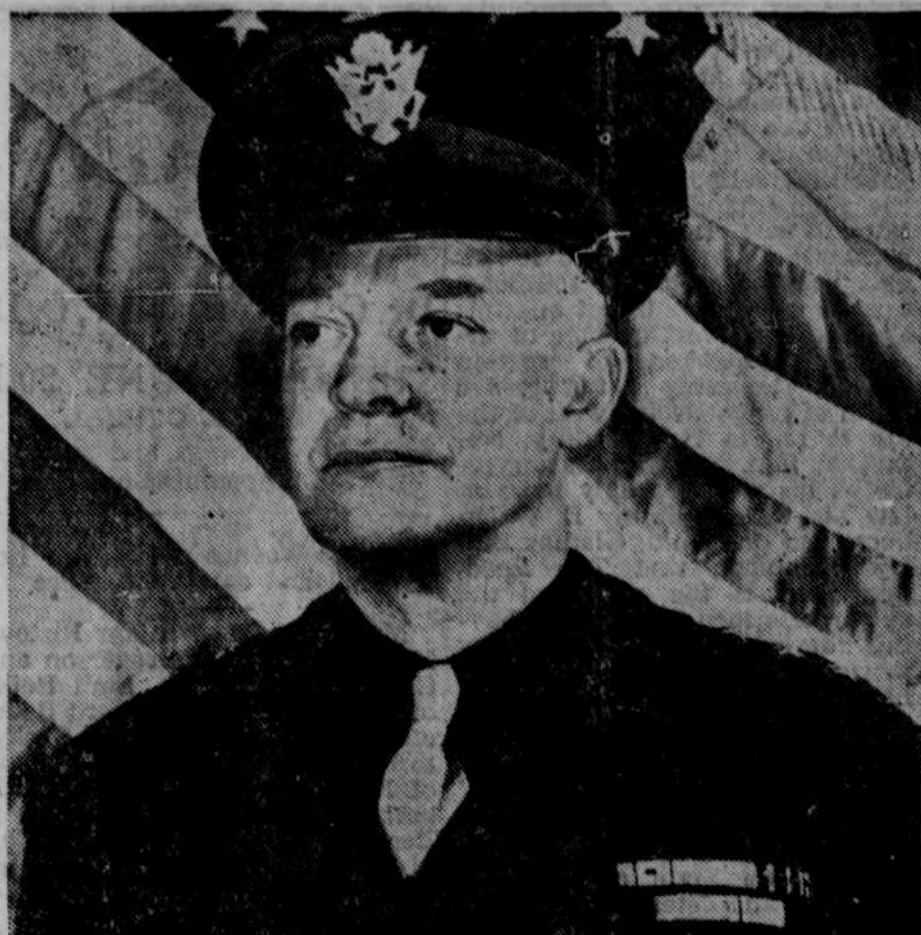


This Nazi one-man submarine which landed on Peter Beach, Anzio beachhead area, Italy, is being examined by U. S. soldiers. The tube on the left is the torpedo, the other is the driving compartment, housing one man. The torpedo tube is shackled to the driving tube and can be released, allowing the pilot to return safely. Inset: This 17-year-old Nazi was captured off Peter Beach when he was discovered by an American officer in his one-man torpedo submarine. He had been in service only six months.

Admiral Nimitz Wins Horseshoe Contest



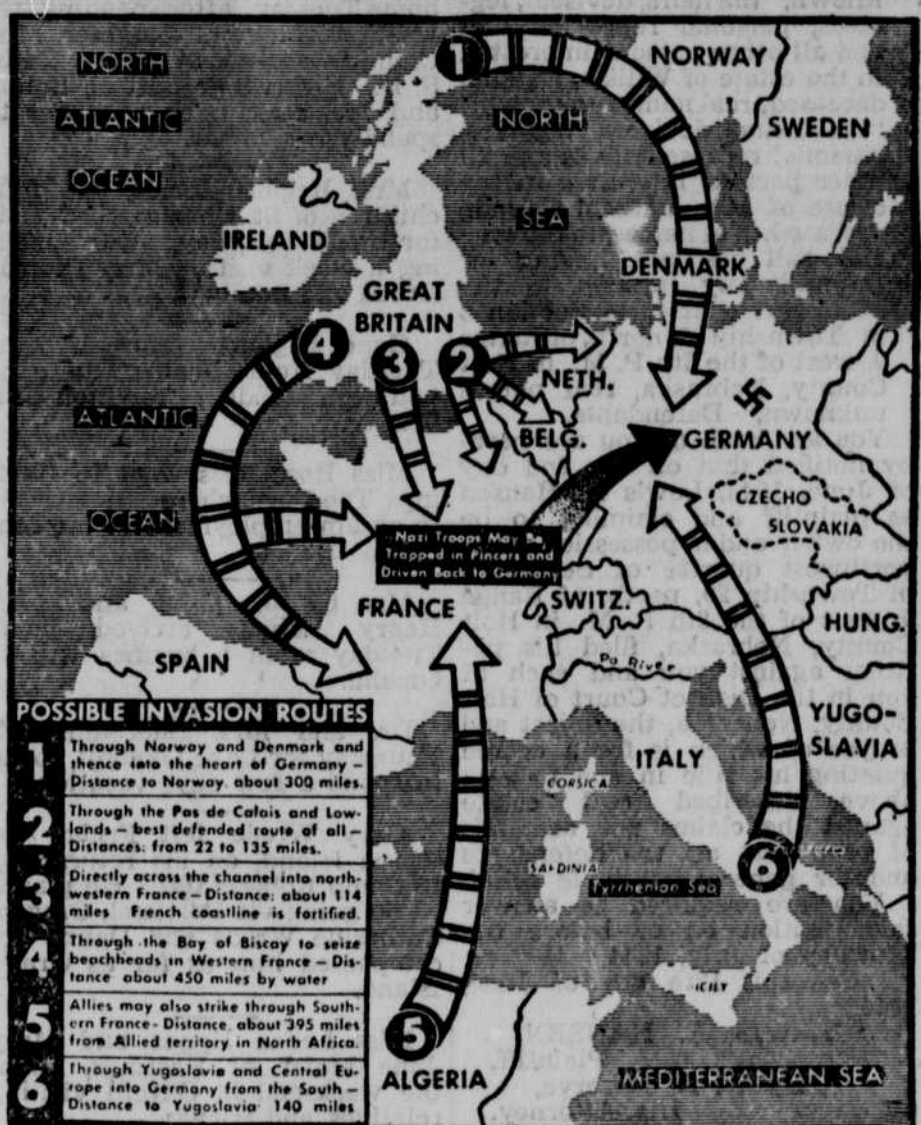
The Admiral wins again. In a double match at a recent picnic held for the fleet, the team headed by Admiral C. W. Nimitz, commander in chief, U. S. Pacific fleet and the Pacific ocean areas, won the horseshoe match. While Admiral Nimitz gets set for one of his ringers, Earl R. Lavender, BM 1-c, U. S. navy, of Los Angeles, Calif., awaits his turn. In addition to the horseshoe contest, ball games, swimming, races, boxing, wrestling and other sporting events were included during the picnic. These events are provided whenever possible, but under present fighting conditions in the Pacific it is seldom possible for the sailors to land and enjoy themselves. Most of their entertainment is carried on aboard ship.



GENERAL DWIGHT D. EISENHOWER
Supreme Allied Commander.



(WASHINGTON, D. C., VIA ENGLAND)—American troops embark for the kick-off. Photo shows American troops as they embarked for the invasion of Hitler's Europe on D-Day. (Signal Corps Radio Telephoto).



Shown above are the six most likely invasion routes as seen by Allied military strategists. Initial German reports put the invasion front opposite the south England coast, centering around the Seine river estuary and the Seine bay, about 80 miles from the British side across the English channel, along a stretch of about 75 miles of the French coast.

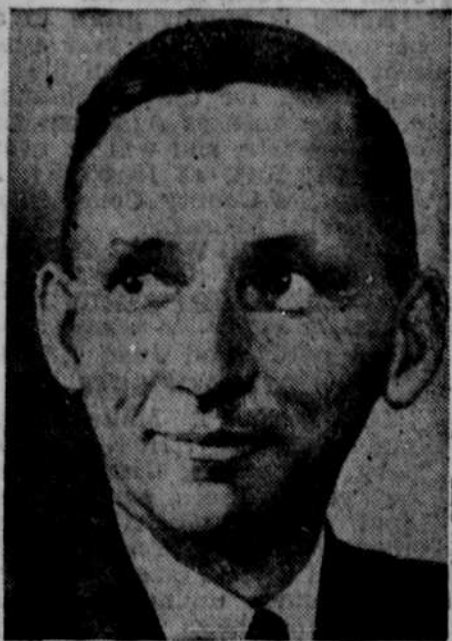


The area indicated in white on the above map is the Nazi defense zone. Continued bombing of key communications lines complicated the enemy's transportation problems and the past months of hammering at the German Luftwaffe so weakened that unit that the Allied air force dictated terms on which they should meet. Several weeks ago it was reported that Field Marshal Erwin Rommel had moved approximately a quarter of a million men to that area.



Beaches like these were first military objectives.

Deputy Commander



AIR CHIEF MARSHAL SIR ARTHUR TEDDER
Britain who turned to the air after being wounded as infantryman in World War I.

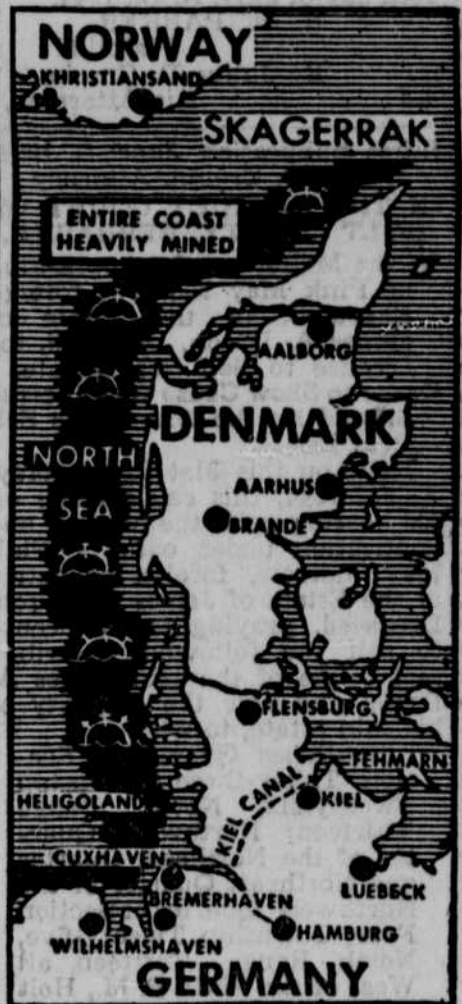
Ground Force Chief



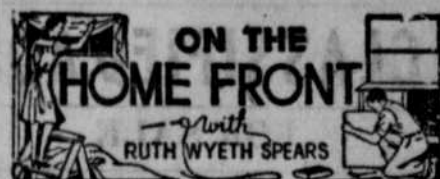
LIEUT. GEN. OMAR NELSON BRADLEY

Missouri born, quiet-mannered Bradley was the hero of the American victory at Bizerte. His job is to lead his men from the channel to Berlin.

Allied Promise



Although France was the first country to feel the impact of Allied strength, United Nations' leaders promised to strike through Norway and the lowlands in their war for liberation.



IT IS easy to make a whole set of these folding stands and plywood trays. Cut all the pieces at one session and then spend an evening putting them together. You are then ready for supper under the trees or on the porch.

Carry-a-tray parties are fun for everybody and very little work for the hostess. Each tray may be at-



tractively set with luncheon mat, silver and gay informal dishes. Hot foods may be prepared in individual casseroles. Guests set up their stands and eat where they please in twosomes or in groups and the novelty of the idea creates the informal atmosphere which makes any party a success.

NOTE—Mrs. Spears has prepared an actual-size pattern to guide you in cutting all the parts of these stands and trays with a complete list of materials required and illustrated directions for assembling. This is pattern No. 268 which will be sent for 15 cents, which covers cost and mailing. Address:

MRS. RUTH WYETH SPEARS
Bedford Hills New York
Drawer 10
Enclose 15 cents for Pattern No. 268.
Name
Address

As Trees Twist

When the grain of trees twists it generally goes around to the right as it ascends. A left twist is not unknown but is unusual. Thus, there are right and left-handed trees, with the former predominating as do right-handed individuals.

British Celebrate Victories in Italy



An impromptu celebration, including shows, singing, dancing and short acts, was held by the troops making up the British Eighth army after the capture of the long-besieged citadel of Cassino at the start of the big Allied offensive. The celebration took place among the ruins of the strong point.

GI Entertainment



Marlene Dietrich and Irving Berlin entertain Fifth army in Italy by mobile army radio. Famous under-pinnings of La Dietrich are completely covered by regulation GI.

Students Study in Outdoor Classes



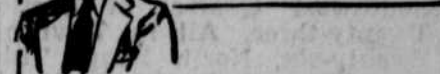
Compulsory military training is now required of all male students attending any university in Canada. As is true in American colleges many of the young men are already in uniform, receiving training at various colleges. Animal anatomy class at the University of British Columbia attend outdoor class.

Lehman Reports



Walking on crutches after injuring his leg in Cairo, Egypt, Herbert Lehman, administrator of rehabilitation, is shown at the White House as he reported to the President after his trip to North Africa.

SNAPPY FACTS ABOUT RUBBER



Synthetic inner tubes need lubrication before being inserted in a casing. Partially inflate the tube and use ordinary pure soapuds as a lubricant in the absence of a special tube lubrication preparation. Dry synthetic tubes do not "slide" in the tire and unless lubricated may not adjust themselves properly.

Proponents of the continuance of our synthetic rubber insurance policy after the war hold that jungle growth on the rubber plantations and the probability of the Japs wrecking the plantation equipment may mean a loss of two years before normal levels of rubber production can be realized.

James Shaw

In war or peace
B.F. Goodrich
FIRST IN RUBBER



Get into Action
For Full Victory!