

John Alfs

Democratic Nominee
For the Office of

County Assessor
of Holt County

To the Voters of Holt County, Nebraska:

As Holt county covers quite a large territory, there are probably many voters who have never heard of me before, so I take this method of introducing myself to them.

I have been a resident of Holt county for 58 years, and a taxpayer for more than 50 years, and know the Taxpayers' problems. I have been a farmer the greater part of my life. At present I am a resident of O'Neill, and a member of the City Council.

Your vote will be appreciated, and if elected I will try to give every taxpayer a square deal. Thanks a lot.



VOTE FOR 'Tony' Asimus

Non-Political Candidate
For Re-election
for

Nebraska Unicameral
LEGISLATURE
28th District

Holt, Boyd, Keya Paha and Rock Counties
YOUR SUPPORT WILL BE APPRECIATED

REMEMBER AND VOTE
FOR

L. G. GILLESPIE

Republican Nominee For

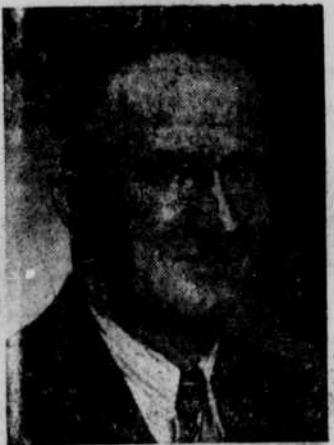
COUNTY ASSESSOR

Served Eight Years As Local Assessor.

Favors a Fair and Reasonable Assessment of
Property for Taxation Purposes.

ELECTION NOVEMBER 3, 1942

Your Vote Will Be Much Appreciated



Vote For Thomas F. Higgins

DEMOCRATIC CANDIDATE

FOR
Clerk of District Court

Long time resident of Holt county.
First time up for county office.

College education. Taught in public
schools of Nebraska five years. Ten
years in mercantile business. Bal-
ance of life on farm.

Married. Large family. One son enlisted, one in draft, another
son will be of draft age in a few months.

YOUR VOTE and Support Greatly Appreciated

Ross Amspoker For State Senator

Ross Amspoker, of Springview, will appreciate the support of the voters of the 28th Legislative District (Holt, Boyd, Rock and Keya Paha Counties) in his campaign for State Senator at the November 3d election.

Mr. Amspoker is familiar with conditions in North Nebraska, is an experienced legislator, a careful and prudent business man, with an active personal interest in economical, efficient, pay-as-we-go government.

Look for the Name "Ross Amspoker"
On the Non-Political Ballot

OFFICIAL PROCEEDINGS OF THE HOLT COUNTY BOARD

(Continued)

CITY AND VILLAGE LEVIES									
General	Light	Park	Band	Fire Dept.	City Hall	Sewer Bond	Streets	Ref. Bond	Cemetery
O'Neill	5.28	1.5	.5	.4	1.	3.	2.5	4.	2.5
Atkinson	5.3	.5	.5	.3					5
Stuart	5.5	1.	1.	1.					2
Ewing	5.5								5
Page	5.5								8
Chambers	4.5	5.		.5			3.		
Inman	5.5	6.							
Emmet	5.5								

SCHOOL DISTRICT	LEVIES	152	4.	4.	2.4
General	Bond	Total	Free High		
1	6.	6.	2.4	152	4.
2	20.	25.	163	4.6	2.4
3	16.	16.	155	6.	2.4
4	8.	8.	156	6.	2.4
5	1.	1.	157	4.	2.4
6	1.	1.	158	8.	2.4
7	16.	18.	159	6.	2.4
8	7.	7.	160	8.	2.4
9	4.	4.	161	4.6	2.4
10	8.	8.	162	6.	2.4
11	7.	7.	163	6.	2.4
12	7.	7.	164	4.	2.4
13	4.	4.	165	6.	2.4
14	8.	8.	166	6.	2.4
15	8.	8.	167	4.	2.4
16	7.	7.	168	4.	2.4
17	6.	6.	169	8.	2.4
18	1.2	1.2	170	8.	2.4
19	2.4	2.4	171	8.	2.4
20	7.	7.	172	8.	2.4
21	17.	22.	173	11.	2.4
22	7.	7.	174	8.	2.4
23	8.	8.	175	8.	2.4
24	6.	6.	176	8.	2.4
25	2.	2.	177	4.	2.4
26	7.	7.	178	9.	2.4
27	7.	7.	179	8.	2.4
28	4.	4.	180	8.	2.4
29	20.	24.	181	3.	2.4
30	20.	24.	182	6.	2.4
31	5.	5.	183	6.	2.4
32	8.	8.	184	2.	2.4
33	8.	8.	185	2.	2.4
34	8.	8.	186	8.	2.4
35	3.4	3.4	187	8.	2.4
36	6.	6.	188	8.	2.4
37	4.	4.	189	8.	2.4
38	3.	3.	190	2.6	2.4
39	8.	8.	191	11.	2.4
40	7.	7.	192	12.	2.4
41	3.4	3.4	193	3.	2.4
42	6.	6.	194	7.	2.4
43	20.	20.	195	2.6	2.4
44	3.	3.	196	2.6	2.4
45	8.	8.	197	11.	2.4
46	8.	8.	198	12.	2.4
47	8.	8.	199	3.	2.4
48	3.	3.	200	3.4	2.4
49	8.	8.	201	8.	2.4
50	8.	8.	202	8.	2.4
51	5.	5.	203	2.	2.4
52	8.	8.	204	8.	2.4
53	8.	8.	205	3.4	2.4
54	7.	7.	206	8.	2.4
55	11.	11.	207	8.	2.4
56	7.4	7.4	208	8.	2.4
57	1.	1.	209	8.	2.4
58	5.	5.	210	6.	2.4
59	8.	8.	211	8.	2.4
60	8.	8.	212	5.	2.4
61	8.	8.	213	7.	2.4
62	8.	8.	214	8.	2.4
63	8.	8.	215	8.	2.4
64	8.	8.	216	8.	2.4
65	3.	3.	217	8.	2.4
66	6.	6.	218	8.	2.4
67	7.	7.	219	8.	2.4
68	5.	5.	220	8.	2.4
69	5.	5.	221	8.	2.4
70	2.	2.	222	8.	2.4
71	8.	8.	223	3.	2.4
72	3.2	3.2	224	8.	2.4
73	5.	5.	225	8.	2.4
74	8.	8.	226	8.	2.4
75	4.	4.	227	7.	2.4
76	6.4	6.4	228	14.	2.4
77	8.	8.	229	1.	2.4
78	8.	8.	230	3.	2.4
79	8.	8.	231	3.	2.4
80	7.	7.	232	8.	2.4
81	11.	11.	233	8.	2.4
82	2.	2.	234	10.	2.4
83	8.	8.	235	3.	2.4
84	6.	6.	236	3.	2.4
85	6.	6.	237	3.	2.4
86	6.	6.	238	8.	2.4
87	4.	4.	239	8.	2.4
88	5.	5.	240	8.	2.4
89	5.	5.	241	16.	2.4
90	8.	8.	242	8.	2.4
91	4.	4.	243	10.	2.4
92	8.	8.	244	8.	2.4
93	8.	8.	245	14.	2.4
94	8.	8.	246	8.	2.4
95	8.	8.	247	8.	2.4
96	9.	9.	248	8.	2.4
97	8.	8.	249	3.	2.4
98	6.	6.	250	4.	2.4
99	15.	15.	251	8.	2.4
100	8.	8.	252	8.	2.4
101	10.	10.	253	4.6	2.4
102	8.	8.	254	3.	2.4
103	8.	8.	255	4.2	2.4
104	6.	6.	256	4.2	2.4
105	6.	6.	257	4.2	2.4
106	5.	5.	258	4.2	2.4
107	5.	5.	259	4.2	2.4
108	7.	7.	260	4.2	2.4
109	8.	8.	261	4.2	2.4
110	8.	8.	262	4.2	2.4
111	8.	8.	263	4.2	2.4
112	8.	8.	264	4.2	2.4
113	8.	8.	265	4.2	2.4
114	8.	8.	266	4.2	2.4
115	8.	8.	267	4.2	2.4
116	8.	8.	268	4.2	2.4
117	8.	8.	269	4.2	2.4
118	8.	8.	270	4.2	2.4
119	8.	8.	271	4.2	2.4
120	8.	8.	272	4.2	2.4
121	8.	8.	273	4.2	2.4
122	8.	8.	274	4.2	2.4
123	8.	8.	275	4.2	2.4
124	8.	8.	276	4.2	2.4
125	8.	8.	277	4.2	2.4
126	8.	8.	278	4.2	2.4
127	8.	8.	279	4.2	2.4
128	8.	8.	280	4.2	2.4
129	8.	8.	281	4.2	2.4
130	8.	8.	282	4.2	2.4
131	8.	8.	283	4.2	2.4
132	8.	8.	284	4.2	2.4
133	8.	8.	285	4.2	2.4
134	8.	8.	286	4.2	2.4
135	8.	8.	287	4.2	2.4
136	8.	8.	288	4.2	2.4
137	8.	8.	289	4.2	2.4
138	8.	8.	290	4.2	2.4
139	8.	8.	291	4.2	2.4
140	8.	8.	292	4.2	2.4
141	8.	8.	293	4.2	2.4
142	8.	8.	294	4.2	2.4
143	8.	8.	295	4.2	2.4
144	8.	8.	296	4.2	2.4
145	8.	8.	297	4.2	2.4
146	8.	8.	298	4.2	2.4
147	8.	8.	299	4.2	2.4
148	8.	8.	300	4.2	2.4
149	8.	8.	301	4.2	2.4
150	12.	12.	302	4.2	2.4

A. L. MILLER Republican For Congress



A. L. Miller is a physician, surgeon and business man.

He is the owner of farms and livestock in western Nebraska.

He was Mayor of Kimball, a member of the school board, and president of the Nebraska State Medical Association.

He served four years in the State Legislature, and as State Health Director for one and one-half years.

Believes In

All out for National Defense.

Restoring lost Constitutional Rights to the People.

Greater use of Agricultural Products for Industry.

Eliminating useless Bureaus and Commissions.

Win the War - Win the Peace
PLEDGES TO DEVOTE HIS FULL TIME, SINCERELY AND HONESTLY, IN YOUR SERVICE.



J. Ed Hancock

Republican Nominee
for

County Treasurer

12 years experience in the
office and present
Chief Clerk

I Fully Realize the Responsibility
I Will Appreciate Your Vote and Support at the
November 3rd Election

WALTER G. SIRE

Republican Nominee

For Holt County Clerk



Lifetime Resident of Holt County
Three Years Experience As County Assessor
Your Support Will Be Appreciated at General Election

Jack Arbuthnot

DEMOCRATIC
CANDIDATE

FOR

County Treasurer

QUALIFIED CAPABLE
COURTEOUS

Your Vote and Influence Will Be Appreciated

General Election, Tuesday, November 3rd

VOTE FOR

J. C. STEIN

Republican Candidate for Re-election

Supervisor FIRST DISTRICT

Holt county now has no indebtedness, except the Court House Bonds. Since January 1, 1942, Holt County, through the County Board, has purchased \$50,000 worth of Government Bonds. We are now on a cash basis.

If you approve my efforts toward economical county government, I ask your support and vote at the Election on November 3rd.