

Out Our Way

By William.



THAT PROVES WHAT I'VE ALLUS THOT. SINCE TH' BULL O' TH' WOODS HAS BEEN RUMMIN' AROUND WID ALL TH' BIG SHOTS, HE CLAIMS HE LIKES GRAND OPERY - THAT GUY SINGS IT GOOD, BECAUSE HE'S WON A COUPLA CONTESTS AN' A RICH GUY IS GONNA SEND HIM T' STUDY IN EUROPE - HE'S GOOD - BUT, TH' BULL, 'THINKS IT'S A BEARIN', SCREETCHIN' FER OIL.

I'VE HAD MY SUSPICIONS ABOUT SOME PEOPLE, TOO. ONE O' THEM SEZ 'I LOVE FILET' OF SOLE, BUT I CAN'T GO NO KIND OF FISH - YEH - HE LIKES THAT STUFF IF IT COMES IN A TUXEDO, BUT NOT IN OVERALLS.

ART AND INDUSTRY.

J.R. WILLIAMS
© 1931 BY NEA SERVICE, INC.

FARMERS BATTLE LOSSES FROM EROSION BY BUILDING TERRACES ACROSS FIELDS

Amount of Plant Food and Soil Carried Away Is Astounding

By NEA Service
Ames, Ia.—Three trillion pounds of soil, carrying at least 125,000,000,000 pounds of plant food, worth more than \$2,000,000,000—that is the amount robbed from fields and pastures of the United States each year by soil erosion, according to a report of the United States department of agriculture.

This loss is 21 times the annual loss in fertilizing elements removed by growth of plants and crops.

In many states enormous acreages have been abandoned because of loss of top soil and fertility and because of formation of ditches due to soil washing. In Iowa alone approximately 200,000 out of its 21 million acres of tillable land are idle because of depleted soil fertility and erosion.

As a result of this condition many farmers are becoming interested in terracing as a means of checking soil washing. Many of them, especially in southern Iowa where erosion is most serious, are building their own terraces. Several have bought terracing machines.

Eager to Save Land
More than 100 terracing demonstrations have been held on Iowa farms at the request of owners by extension agricultural engineers from Iowa State college. These fields average 15 or 20 acres each.

One of the largest is a field of 225 acres on the farm of Perry Mathews near Mt. Pleasant. Mathews was so anxious to have his entire field terraced after seeing the results on neighboring farms that he bought a terracing machine and rented another to work at the same time the extension engineer had the demonstration terraced at the farm.

Terraces are built either with regular terracing machines or with road graders. They consist of a broad flat ridge from 8 to 15 feet wide running around a hill, or across a slope in such a way that they carry off water slowly and harmlessly during rains. The shallow water channel formed on the slope just above the ridge, which is 12 inches high after it settles, has a drop of four to six inches each 100 linear feet.

Terraces Easy to Build
Arthur B. Hollingsworth, near Mt. Pleasant, was one of the first farmers in his community to build terraces. He constructed them at a low cost by building a home-made "A" shaped machine from old oak planks and the blade of an old grader which provided the cutting edge.

Soon after the terraces were built an eight-inch rain fell. The water was carried off slowly and harmlessly and no sediment or top soil was noticed at the outlets at the edge of the field.

Terraces can be farmed over without serious trouble or inconvenience, according to Hollingsworth. It is much better to have a gently sloping terrace, he says, than to have ditches cut through the field and manure and fertilizer dumped into the fence rows and nearby ditches. Terraces also help hold soil moisture as well as top soil and fertility.

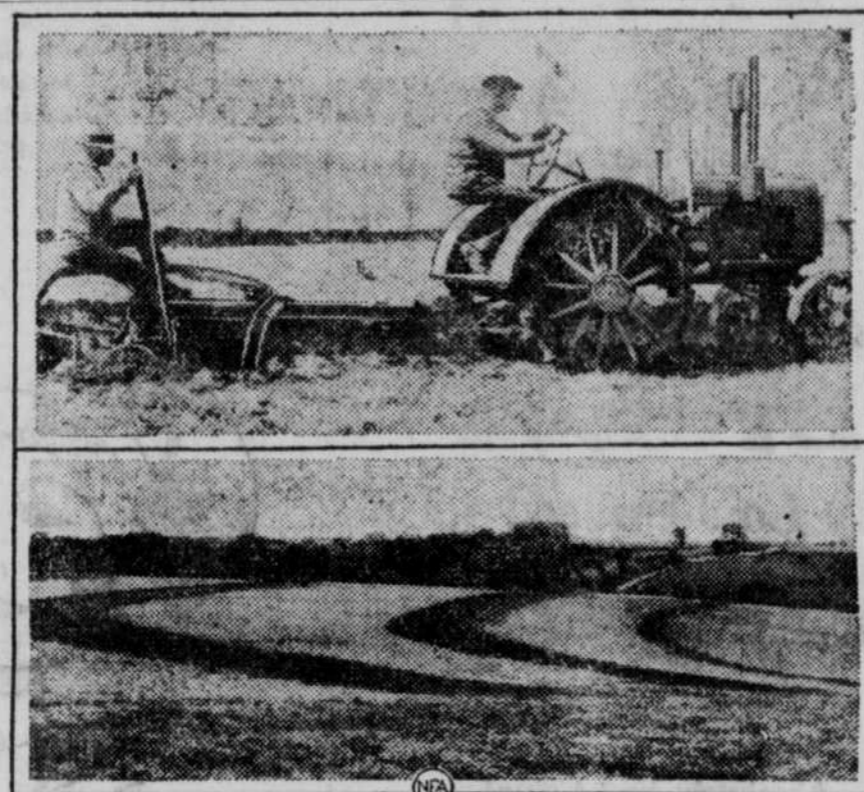
To aid in solving soil problems county soil improvement associations have been organized. One is in Monroe, Mahaska, Wapello and Appanoose counties and another in Wayne, Decatur, Marion and Lucas counties.

Each of these associations has a

New Transmission May Mean Change in Autos

Mexico, Mo.—(UP)—A new era has dawned in the automobile industry, a Mexico garageman was convinced following trials of an automobile transmission he has patented.

Bruce Ridgeway, the inventor, recently made a trial trip in his touring car, in which the device has been installed, and has organized a company for its manufacture and sale. The transmission, according to Ridgeway, auto-



Cutting terraces on the farm of David Savage, in Henry county, Iowa, above. Below, an Iowa farm terraced to prevent soil erosion by heavy rainfalls.

field agent trained in soil management who works with members much as a county agent works with members of his farm bureau. Not only terracing but use of

manure, fertilizers, lime and legumes, tree planting, crop rotations and other soil management practices are emphasized and demonstrated on fields of the members.

Farm Champ in Training



Like champion pugilists, Lucile Gates, declared the champion farm girl of America at the Los Angeles County Fair at Pomona, in 1930, has gone into training to defend her title in a championship "bout" to be staged during the 1931 fair in September. She can milk, churn, drive a tractor and perform many other farm tasks.

129 DEAD IN STREETS

London — (UP) — A total of 129 persons, 85 of whom were men, 30

matically gears the car to higher or lower speed in accordance with road pull. Ridgeway's trial run, made through the streets of Mexico, was faintly reminiscent of the early days of automobiles, crowds of curious following him.

Radio Chair Warmers

Is Club of Invalids

Lima, Ohio — (UP) — James Lisk, 35 years old, an invalid and an amateur wireless operator, is president of a most unique organization. Its title is "The Chair

women and 14 children, were found dead in the city streets here during January and February.

Warmers' club," a world wide association of shortwave operators all of whom are invalids. Every day the 50 or more members exchange greetings over the air. As president, Lisk is a claimant of the world's record for amateur long-distance wireless communication with every part of the world except Asia. He established connections with the Byrd Antarctic expedition several times.

A Fitting Remark

From Passing Show. "This suit was made in London." "Where were you at the time?"

Beware mosquito bites!

Flit kills skeets quick!

Spray

FLIT

Largest Seller in 121 Countries



FLORESTON SHAMPOO—Ideal for use in connection with Parker's Hair Balsam. Makes the hair soft and fluffy. 50 cents by mail or at drug-gists. Hiscoc Chemical Works, Patheogue, N. Y.

Find Builders' Secrets

in Cupola of Pantheon

Architects who have been repairing the cupola of the Pantheon, which with the Colosseum is the most important of Rome's monuments, claim they have discovered the secret of the building methods of the ancient Romans in flinging the vast arches of the dome up from the already high building on which it rests. The discoveries are of extreme importance from a technical point of view. It is said, for Michelangelo himself, who built the dome of Saint Peter's, admitted that he was baffled by the dome of the Pantheon, and previous to Michelangelo, Brunelleschi, builder of the dome of the Florence cathedral, made careful measurements and studies of the Pantheon dome in preparation for his Florence labors, but was never able to solve the mystery of how the old Roman architects worked.

Advice

"Keeping money in a teapot, hey?"
"Yeh."
"Boy, put your money to work."
"I dunno how."
"Get it a job in a bank."

There are hypocri's who do a lot of kindly acts in this world. Give them that much credit.

South American Bird Thing of Rare Beauty

The obtaining of six specimens of "the most beautiful bird in the world"—the Cock-of-the-Rock—in a remote region along the Brazil-Venezuelan border, has been reported to the National Geographic society by Ernest G. Holt, leader of an expedition which has been collecting natural history material for the society in South America.

The remarkable bird, which has been seen alive by but few travelers, is described by Mr. Holt as "a most gorgeous creature, orange or flame colored, with a double crest, and to my mind the most beautiful bird in the world." The beauty is concentrated in the male, for in few bird species is there a more striking contrast between the resplendent cock and the very drab and demure female. In size the Cock-of-the-Rock is between a robin and crow.

Around their camp at Salto do Itua, on the Brazil-Venezuela border, Mr. Holt's party found monkeys so numerous that the meat of the animals was made a regular item on their menu. They also shot curassows or push turkeys.

The Cock-of-the-Rock was found after the camp was moved eastward from the Rio Matruaca to the foothills of the Serra Imeri, a long, tortuous and little-known range of mountains that extends under various names to the frontier of British Guiana, where it culminates in Mount Roraima common point in the boundaries of Venezuela, British Guiana and Brazil.

Heard at a Party

"Separated, have Ley? And it was a case of love at first sight."
"Which I have noticed, my dear, often ends in divorce at first sight."



At Every Point of the Compass Cuticura Preparations Await Your Approval

The Soap, pure and fragrant, used daily, cleanses and purifies, the Ointment, antiseptic and healing, removes pimples or rashes, the Talcum, pure and smooth, is ideal after bathing and shaving. The new Cuticura Shaving Cream gives a rich, creamy lather that remains moist throughout the shave. Soap 25c, Ointment 25c, and 50c, Talcum 25c, Shaving Cream 35c. Proprietors: Potter Drug & Chemical Corporation, Malden, Mass. Try the new Cuticura Shaving Cream.

In the Files

The boss eyed the stenographer with a cold eye.
"Young lady," said he, "that filing cabinet is supposed to be very exact. How is it you can't find what you are looking for?"
"I'm looking for my lunch."

Now It Can Be Told

"Ah tells yuh, Mose, Ah done found out de diffunce 'tween de men and de women at las."
"Say what yuh please, it's dis way: A man'll gib \$2 foh a \$1 thing dat he want, an' a woman'll gib \$1 foh a \$2 thing dat she don't want."

Its regulated combustion increases MOTOR POWER



Ethyl fluid adds nothing to the raw power nature gave gasoline. But this is why it improves the performance of your motor:

Raw gasoline detonates at high compression—creates a series of intermittent explosions. The force of these explosions is largely across the cylinder, instead of downward.

Adding Ethyl fluid makes gasoline burn evenly. The flame flashes from the spark to the piston head. All the gasoline is burned at an even speed and full power is applied.

New RED CROWN ETHYL is made from gasoline of exceptional power. To this gasoline Ethyl fluid is added which so perfectly regulates combustion that the performance of every motor is improved. New Red Crown Ethyl challenges comparison on quick-starting, power, quiet operation and on mileage per gallon.

STANDARD OIL COMPANY OF NEBRASKA



"A Nebraska Institution"

At Red Crown Service Stations and Dealers everywhere in Nebraska