



We offer you the most desirable line to choose your presents from. Our carefully selected display of holiday attractions will impress you with its worth, beauty and reasonable prices. Desirable and Useful Presents. Novel and Beautiful Presents. A special feature of our stock is the opportunity for selection. In all grades pleasure in buying, the most joy in receiving. We welcome your inspection.

For Gifts That are Decidedly Popular and Pleasing, See our line of

Fancy Goods and Novelties TOILET ARTICLES, NOTIONS, ETC.

We offer you the happy combination of a superior stock, a large assortment and the fairest prices. Every article shown is the best of its class. Every class represented is varied and complete. You will approve of our very reasonable prices. Come—even if it is necessary to come without knowing why. You will find good reasons when you see the many splendid opportunities we offer.

C. E. STOUT

PAID LOCALS.

- FARM LOANS—R. H. PARKER.—37tf
Beautiful Line of Silk Hats for the Holidays. Donnelly & Dillon. 34-2
- KODAKS, FILMS, KODAK FINISHING—W. B. Graves, O'Neill. 30-tf
- NO. 2 HAWKEYE CAMERA, SPECIAL \$1.98, Graves Jewelry Store. 27tf
- FOR SALE CHEAP—AN OAK BUFFET in good condition.—Mrs. T. A. Quilty. 28-tf
- FOR SALE—MODERN HOUSE AND 8 lots. Call or write, Mrs. Nona Bedford, Page. 27-9p
- P. J. BIGLIN IS AGENT FOR THE Bliss Native Herbs. When in need of any—always on hand.—26-4
- FOR RENT—ON SHARE OF FOR cash, 760 acres of hay land. Good house and barn.—Peter Reifer. 8-tf
- I WANT SOME FARM AND RANCH loans. If you want money come in and see John L. Quig. 32-tf
- FORM AND RANCH LOANS, 5 AND three-fourth per cent, no commission.—F. J. Dishner, County Agent Joint Stock Land Bank. 17-tf
- FOR RENT—160 ACRE FARM, HAS 120 acres under cultivation, has good buildings, has some alfalfa. See R. H. Parker, O'Neill. 27-3
- FOR SALE—GUNN SECTIONAL book cases 8 sections with 2 tops and 2 lower drawers. Mission finish. Call at this office. 26-tf
- IF YOU NEED THE OLD LOAN ON your farm renewed for another 5 or 10 years, or if you need a larger loan I can make it for you.—R. H. Parker, O'Neill, Nebraska. 21-tf
- All Winter Hats at one-half price at Donnelly & Dillon's. 34-2
- FOR SALE—6-cyl. automobile cheap.—R. H. Parker, O'Neill. 20-tf
- FOR RENT—GOOD HOUSE, CLOSE in.—Edward O'Donnell. 29-tf
- FOR SALE—REGISTERED SHORT-horn bull, 1½ years old.—Richard Janzing. 28-2p
- ALL WINTER HATS ON SALE AT 50 per cent off at Clinton Hat Shop. 29-3
- FOR RENT—MY RANCH OF 760 acres, 3½ miles east of Inman.—Mrs. Peter Ryan. 29-3
- Buy one book for 75c, read it, then bring it back to us and pay us 10c and take your choice of our stock. W. B. Graves. 25-13.
- FOR SALE OR WILL TRADE FOR stock or machinery. Ford touring car. Inquire at this office. 29-3p
- POST—FORD TRUCK SPARE TIRE, tube and rim, in O'Neill or on Spencer highway. Reward. Leave at The Frontier office or with me.—Harry Fox. 29-2
- 5% INTEREST AND NO COMMISSION. I am now loaning money on Farms and Ranches at 5% interest and no commission to pay. New Loan Company I just got.—R. H. Parker, O'Neill, Nebraska. 3-tf
- 25% Discount on the Dress that has no equal—The Peggy O'Neill. Before looking elsewhere, call and see my line of dresses, which I am offering at 25% discount for the balance of this year. On display at Donnelly & Dillon's Style Shoppe. Mrs. Lewis Chapman. 34-1.

Service on Your Battery

We have just installed a new charging machine whereby we can recharge your battery (car or radio) from 6 to 8 hours. Drive your car here and leave it while we recharge your battery, thereby saving the cost and bother of a rental battery.

Bring your radio battery down in the morning and we will have it ready for you, fully charged ready for the evening programs.

Bring your battery in, or call and we will get it, and have it put in shape for winter.

Willard Batteries, Ford Parts, Goodrich Tires, Anti Freeze, Heaters, and Accessories.

O'Neill Battery Station

J. J. McDermott, Prop.

Phone 39

O'Neill, Nebr.

Mr. and Mrs. J. E. Vincent are the parents of a son, born Wednesday evening. The young man tipped the scales at 11½ pounds.—Ainsworth Democrat.

FOR SALE OR TRADE.

One square block, in College Hill, Hot Springs, South Dakota. Half section in Montana, north of Billings. PETER REIFER. 10-tf

TAKEN UP

Taken up, Wednesday, December 3, seven head of shoats, weighing about fifty pounds each. Owner can have same by paying for advertising and keep. 27-tf

MRS. VIOLA MORGAN.

STRAYED.

One black yearling steer with white face, 511 in one ear. Came to my place, 5 miles southeast of O'Neill and 6 miles northwest of Inman. Owner can have same by paying for advertising and keep. 27-3

FRED VITT.

(First publication December 4.)
NOTICE FOR BIDS FOR SUPPLIES. Notice is hereby given that sealed bids will be received at the office of the County Clerk of Holt County, at O'Neill, Nebraska, up to noon the 1st day of January, A. D. 1925, for the furnishing of the books and blanks for the various offices of Holt County for the year 1925, and that said bids shall be opened by the Board of Supervisors of said county and the contract awarded to the lowest and best bidder.

The following is the probable number of each of the items of books, blanks and stationery that will be required during said year:

- Class "A" Books.
- 6 Records, 8 quire bound, medium plain, each.
 - 6 Records, 8 quire bound, medium printed heads, each.
 - 6 Records, 8 quire bound, medium printed page, each.
 - 6 Records, double cap, 8 quires printed, each.
 - 6 Records, double cap, 8 quires, printed heads, each.
 - 3 Loose leaf records, medium plain, each.
 - 6 Loose leaf records, medium, printed head, each.
 - 6 Loose leaf records, medium, printed page, each.
 - 1 8 quire personal tax list
 - 3 Double medium tax list, 20 quires printed page, each.
 - 300 Special Index tabs with shields for tax lists.
 - 10,000 Tax Receipts, 200 in a book, duplicate, well bound, ruled and printed to copy, furnished, numbered consecutively, per M.
 - 1 Dozen Sheriff's pocket documents, each.
 - 34 1 quire personal assessment records, each.
 - 6 2 quire personal assessment records, each.
 - 7,000 Duplicate personal assessment schedules, per M.
 - 7,000 original personal assessment schedules, per M.
 - 600 Smeads Banded files specially printed, per M.
 - 12 Assessors schedule files, each.
 - 40 Real Estate Assessors books.
 - 20 Patent Books, each.
 - 20 Canvas covers, each.
 - 40 Assessment of improvements on real estate, each.
 - 1 Dozen Revenue Laws, each.
 - 24 Memorandum of mortgage indebtedness, Manila bound, each.
 - 12 books, Treasurers Receipts for school money, cloth bound, each.
 - 12 Books order of County Clerk for Overseer of Highways, cloth bound, each.
 - 12 books, receipts of Overseer of Highways, each.
 - 1 Double Medium Surveyors record, with tracing cloth, 600 pages, each.
 - 2 Rebinding complete records for Clerk of District Court, each.
 - 6 4-quire day fee books, half bound, printed heads, each.
 - 36 Special claim files, each.
 - 1 Real Estate assessment record 1 quire each.
 - 500 Special assessment schedule, 10 forms, each.

All above books, except where binding specified, are to be extra Full bound, numbered and lettered on back and made of Byron Weston's linen Leger paper.

- Class "B" Blanks.
- 2,000 Legal Blanks, full sheet, per 1,000.
 - 3,000 Legal Blanks, half sheet, per 1,000.
 - 5,000 Legal Blanks, quarter sheet, per 1,000.
 - 3,000 Legal Blanks, eighth sheet, per 1,000.
 - 2,000 Letter Heads, printed 8½x11, Westend Mills or equal paper 20 lbs., per 1,000.
 - 10,000 Envelopes printed, No. 1 Rag, 20 pound, size 6½, white, per 1,000.
 - 1,000 Envelopes printed No. 1 Rag, 50 lb., size 10, white, per 1,000.
 - 1,000 Envelopes printed No. 1 Rag, 50 lb., size 11, white, per 1,000.

- Supplies For The County Superintendent
- Class "C"
- 300 Teachers' Check cards.
 - 100 Free High School Certificates.
 - 100 Maps of Townships.
 - 2 Books Notice to Director of tax levy.
 - 100 Folders for Examination.
 - 100 District order books on the district treasurer.
 - 100 District Order books on County treasurer.
 - 100 Combination registers.
 - 50 Boxes of teacher's examination paper.
 - 100 Clasp envelopes (10¼x7¼).
 - 100 Clasp envelopes (12x9).
 - 100 Clasp envelopes (15¼x9¼).
 - 100 District treasurer's bonds.
 - 25 Director's records.
 - 25 Moderator's records.
 - 25 Treasurer's records.
 - 100 Records of visits.
 - 200 Books of perfect attendance certificates.
 - 100 School laws.
 - 50 District Treasurer's bond.
 - 1 Book examination No. for transfer.
 - 50 History of school district bond.
 - 50 Teacher's contracts.
 - 100 Census blanks.
 - 50 Desired transfer for school purposes.
 - 50 Notice to director of transfer.
 - 50 Return to change boundary.

- 7 Books free high school tuition statements.
- 7 Books free high school attendance report.
- 7 Books free high school attendance report.
- 300 Certificates of award (small).
- 200 Certificates of award (large).
- 1 Alphabetical index (one letter to the card).
- 250 Daily program blanks.
- 200 Courses of study.
- 240 Director's legal blanks.
- 300 Application for free high school tuition.
- 100 Classification and term summary blanks.
- 200 Mailing tubes (10 inch).
- 200 Mailing tubes (16 inch).
- 10 Report of private and parochial schools.
- 200 Eight grade diplomas.
- 250 Institute note books.
- 275 Teacher's card sets.
- 3 Reams drawing paper (not punched).
- 3 Reams history note paper (not punched).
- 1,000 Report cards for pupils.
- 300 Cards application for free high school tuition by pupil.
- 100 First grade certificates.
- 100 Second grade certificates.
- 1 Book free high school admission certificates.
- 15 reams examination paper, per ream.
- Class "D."
- 6,000 Printed Government postal cards, one side only, cards furnished by county, per 100.
- 12 Quarts Carter's writing fluid per quart.
- 12 Pints, Carter's red ink, per pint.
- 10 Gross Spencerian Glucium or Silver series pens, per gross.
- 4 Gross Velvet pencils, per gross.
- 4 Gross Faber's pencils, per gross.
- 6 Gross Perfection pencils, per gross.
- 300 Manuscript covers, per 100.
- 6 Reams typewriter paper.
- 24 Reams Alexis bond, per ream.
- 6 Reams onion skin, per ream.
- 6 Reams, numbered line legal cap, best quality, per box.
- 24 Stenographer's note books, each.
- 12 Boxes No. 20 Typewriter paper, per box.
- 6 Dozen Senate Pads, 8½x14, per dozen.
- 6 Chattel mortgage files, each.
- 6 Motor vehicle license books, each.
- 2 Quarts Carter's mullage, each.
- 2 Quarts Liberty paste, each.
- 1 Dozen IXL Steel erasers, per dozen.
- 5 Pounds rubber bands, per ¼ box.
- 500 Sheet best grade carbon paper.
- 2 Dozen Webster or equal typewriter ribbons, per dozen.
- 3 Reams court reporter paper, per ream.
- 10 Dozen Towers pen holders, per dozen.
- 10 Reams Marginal ruled typewriter paper, net weight, per ream.
- 5 Reams Marginal ruled typewriter paper, light weight, per ream.
- 1 Dozen 1¼ ounce bottles Ruids stamping ink, per oz.
- 24 Boxes Hotchkiss staples, No. 1, per box.

TO THE DEPOSITOR:

National Banks Fail—

When they do depositors lose heavily. Why? Because deposits in National Banks are not guaranteed.

State Banks Fail—

When they do depositors are paid in full. Why? Because deposits in State Banks are protected by the Depositors Guarantee Fund of the State of Nebraska.

The Nebraska State Bank

of O'Neill is the only bank in O'Neill which offers you this protection. You will protect yourself and please us by depositing your money with us.

5 Per Cent Paid on Time Deposits

Nebraska State Bank O'Neill, Nebraska

catious furnish by the office ordering same.

Payments to be made by warrant on the County General Fund.

All supplies are to be furnished as ordered.

Bids must be marked for class "A" "C" "D," as the case may be and addressed to the County Clerk of Holt County, Nebraska.

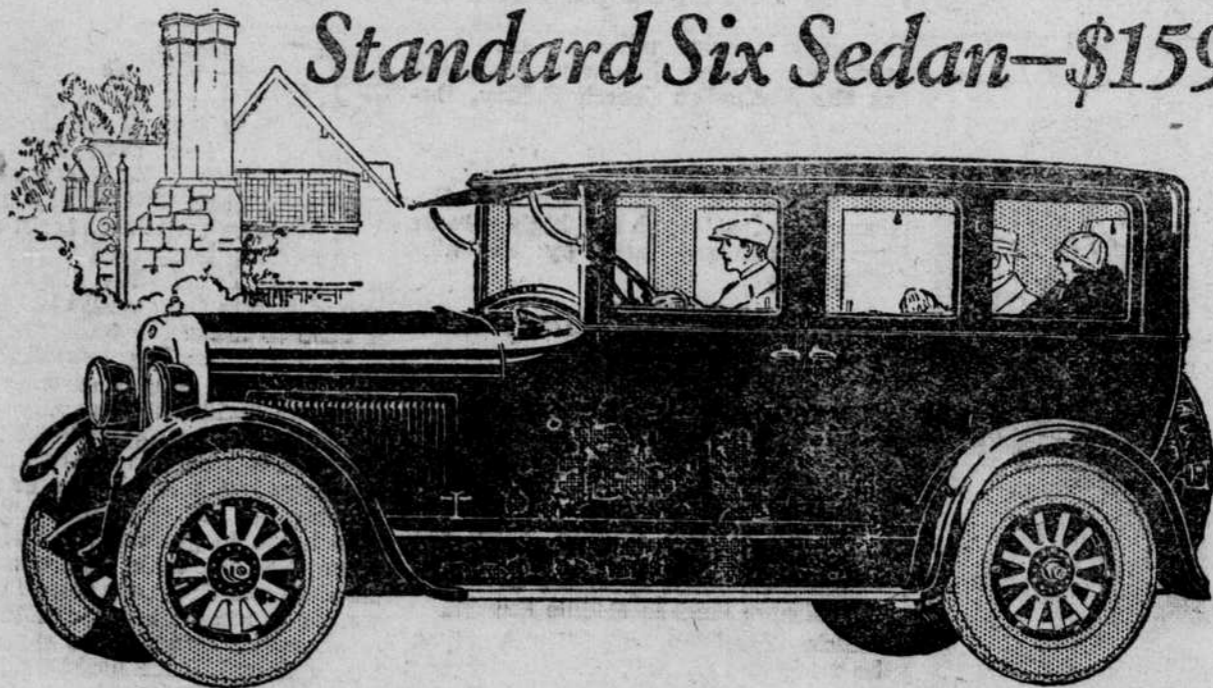
The successful bidder will be required to furnish a good and sufficient bond for faithful performance of contract.

The County Board of Supervisors reserves the right to reject any and all bids.

Bids to be opened according to the requirements of the law at the first meeting of the County Board on and after January 13, 1925.

(Seal) E. F. PORTER,
County Clerk.

The New STUDEBAKER Standard Six Sedan—\$1595



HERE is a fascinating new closed car—new in beauty, new in convenience, new in driving ease — it's the Studebaker Standard Six Sedan.

It is built complete by Studebaker—assurance of mechanical excellence plus finest coachwork. It is also a guarantee of utmost value, for the savings Studebaker makes through complete manufacture are reflected in its surprisingly low price.

New beauty

New body—new radiator—new hood—new fenders—new lamps—genuine mohair upholstery—new walnut-finished instrument board—new grouping of instruments on silver-faced dial—new stop-and-tail light—new natural wood wheels—new satin lacquer finish.

New convenience

New control of lights from steering wheel—

new automatic spark control—new one-piece windshield—new winged radiator cap—new gasoline gauge on dash—glare-proof visor—automatic windshield cleaner—rear-view mirror—corner reading lights—new tire carrier with lock—new-type accelerator.

New driving ease

Improved engine of greater power—new crankshaft machined on all surfaces—new heavy frame—new large brakes—new steering mechanism specially designed for full-size balloon tires—new ease of gear shifting with unit power plant—new emergency brake lever, located at the dash—new force-feed lubrication system.

By all means see this new Sedan before you buy. Sit behind the wheel and experience its smooth, quiet, vibrationless performance and its delightful ease of operation.

STANDARD SIX

113-in. W. B. 50 H.P.

- 3-Pass. Duplex-Phaeton . \$1145
- 3-Pass. Duplex-Roadster . 1125
- 3-Pass. Country Club Coupe . 1395
- 3-Pass. Coupe 1495
- 3-Pass. Sedan 1595
- 3-Pass. Berline 1650

SPECIAL SIX

120-in. W. B. 65 H.P.

- 5-Pass. Duplex-Phaeton . \$1495
- 3-Pass. Duplex-Roadster . 1450
- 4-Pass. Victoria 2050
- 5-Pass. Sedan 2150
- 5-Pass. Berline 2225

BIG SIX

127-in. W. B. 75 H.P.

- 7-Pass. Duplex-Phaeton . \$1875
- 5-Pass. Coupe 2650
- 7-Pass. Sedan 2785
- 7-Pass. Berline 2860

Walter A. Stein, Dealer, O'Neill, Nebraska

THIS IS A STUDEBAKER YEAR