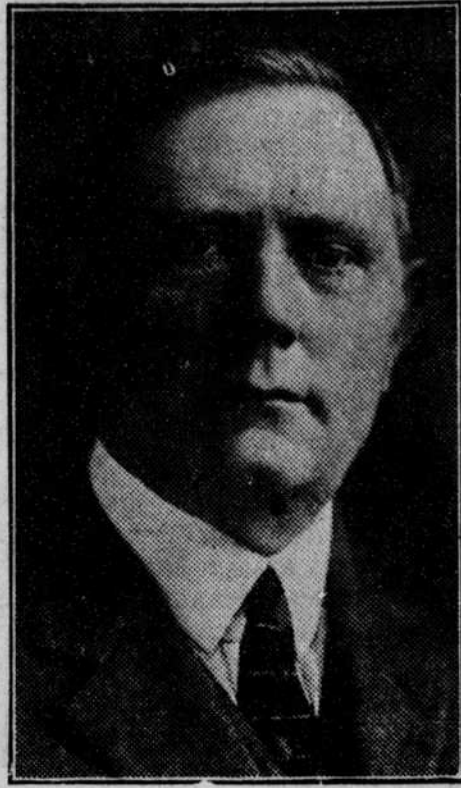


Ira H. Moss

Republican Candidate for Reelection

to the office of
Clerk of the District Court
Holt County

Election Tuesday, November 4th



Robert R. Dickson

O'Neill, Nebraska

Candidate for reelection
for the office of
District Judge

Fifteenth Judicial
District

"Non-Political Ballot"

S. E. Kelley

candidate for the office of
County Judge of Holt County
on the
Non-political ballot

A man well qualified to fill the office.

Your vote will be appreciated.

L. E. Skidmore

Republican Candidate for Supervisor, District No. 4
Holt County
Election November 4, 1924

Mr. Skidmore is one of the ablest members of
the present board of supervisors, and is thoroughly
conversant with the road building program.

A vote for Mr. Skidmore is a vote for the best
interests of the district.

Mr. Voter!

Meet Mr.

Candidate!

He is asking for your Vote and
Support at the Election

Nov. 4.

You should cast your vote Intelligently. To do this you should study the Records of the different Candidates to determine their qualifications for the office.

Look 'Em Over!

This is in no sense a political page but an opportunity afforded the Voter to get acquainted with the men who seek to represent Your Interests.

Preserve This Page

W. L. Connor

Democratic Candidate for Supervisor
District No. 4
Holt County, Nebraska

Election November 4, 1924

Your Support Will Be Appreciated

Wm. L. Philley

Republican candidate for State Senator, 22nd
District, comprising the counties of Holt,
Rock, Brown, Keya Paha and Boyd.

Your Support Solicited

Election November 4th

J. H. Berryman

Candidate for Judge of the District Court on the
Non-Political Ballot in the Fifteenth
Judicial District.

A graduate of the Law Department of the University
of Wisconsin.

Believes in the enforcement of the laws as they ap-
pear on the statute.

Your Support is Earnestly Solicited
Election November 4th.

L. C. McKim

Republican Candidate for
Supervisor 2nd District

This is Mr. McKim's second term as a member of the
county board. His record has been one of good
business and economy. He is asking for
your support and will devote his best
efforts to the interests of the tax-
payers of Holt County
if elected.

A Resident of Holt County for 44 Years

C. D. Keyes

Inman, Nebraska

Republican Candidate for County Assessor

Election Tuesday, November 4, 1924

YOUR SUPPORT WILL BE APPRECIATED

J. B. Donohoe

Democratic Candidate for Supervisor
District No. 2
Holt County, Nebraska

If elected Mr. Donohoe pledges himself to use
his influence for the lowering of taxes and for the
promotion of the best interests of the county.